

VMWare Horizon View Client

Before Proceeding;

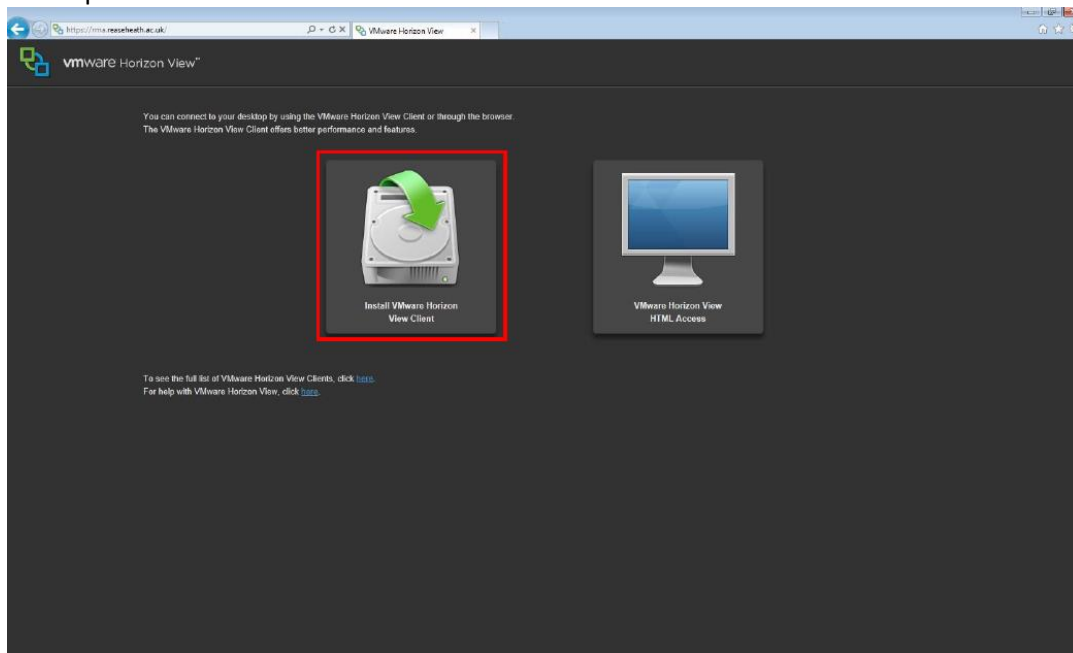
- Make sure you have a College Username and Password
- You know the Operating System you're using, E.g. Windows 32bit or 64bit, Mac or Linux.

Step 1

Open your preferred Internet Browser and navigate to 'https://rma.reaseheath.ac.uk/'

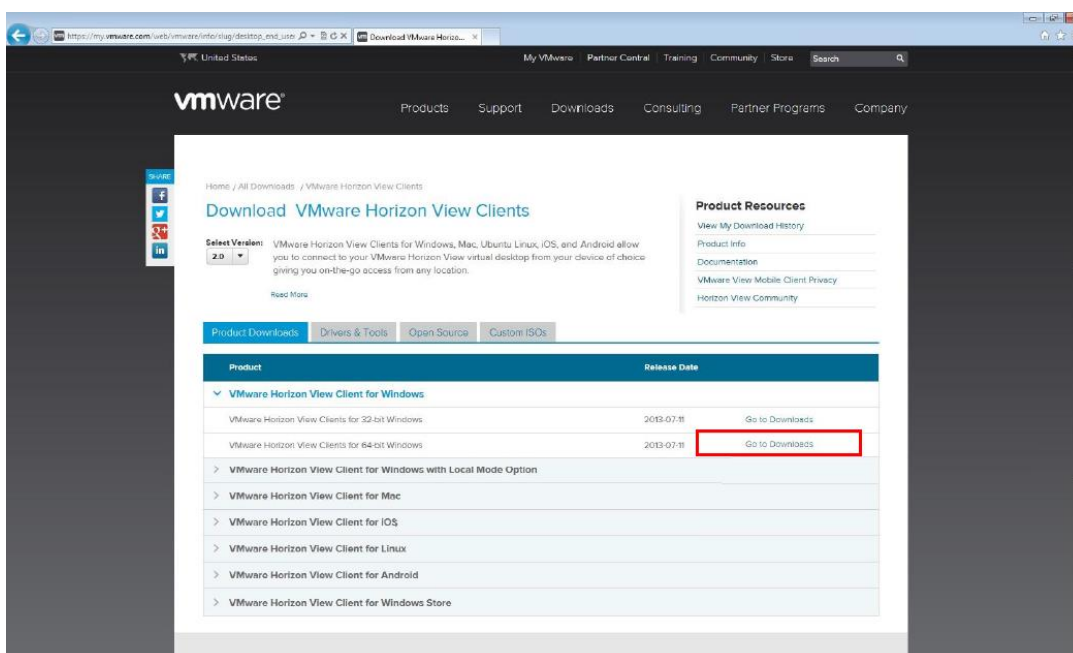
Step 2

Select the option 'Install VMWare Horizon View Client'



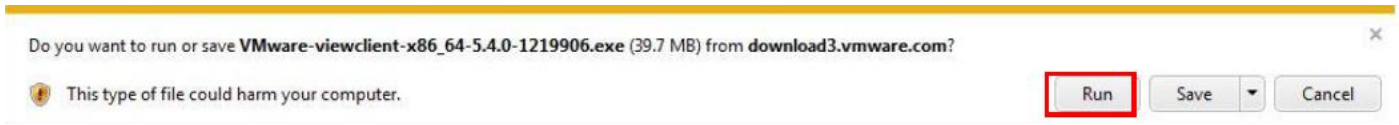
Step 3

From the different options, install the version for your Operating System.



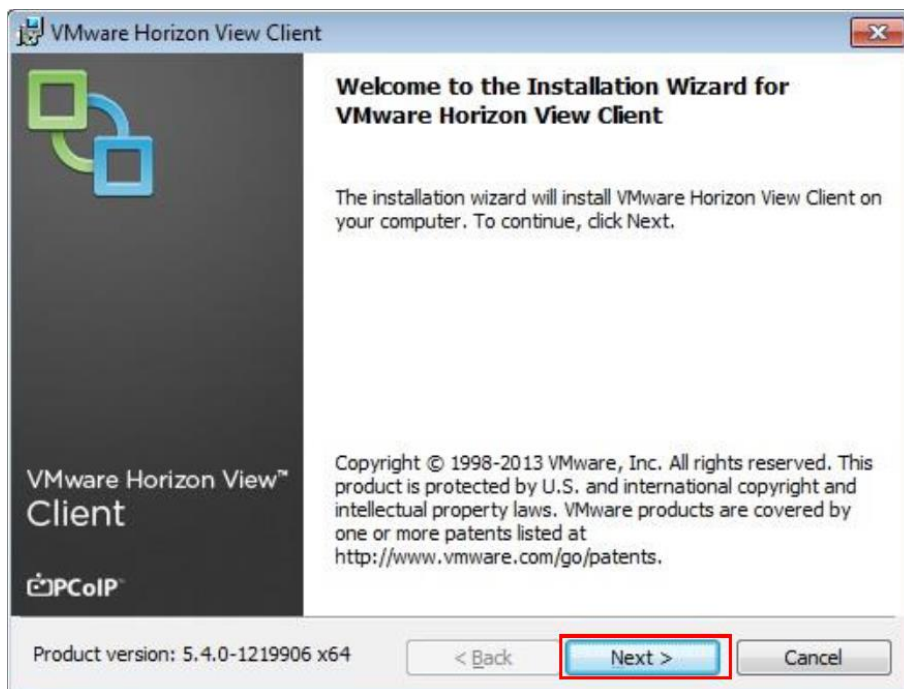
Step 4

Download the VMWare View Client and run the installation. Screenshots show this happening on Windows 7 and Internet Explorer 9.



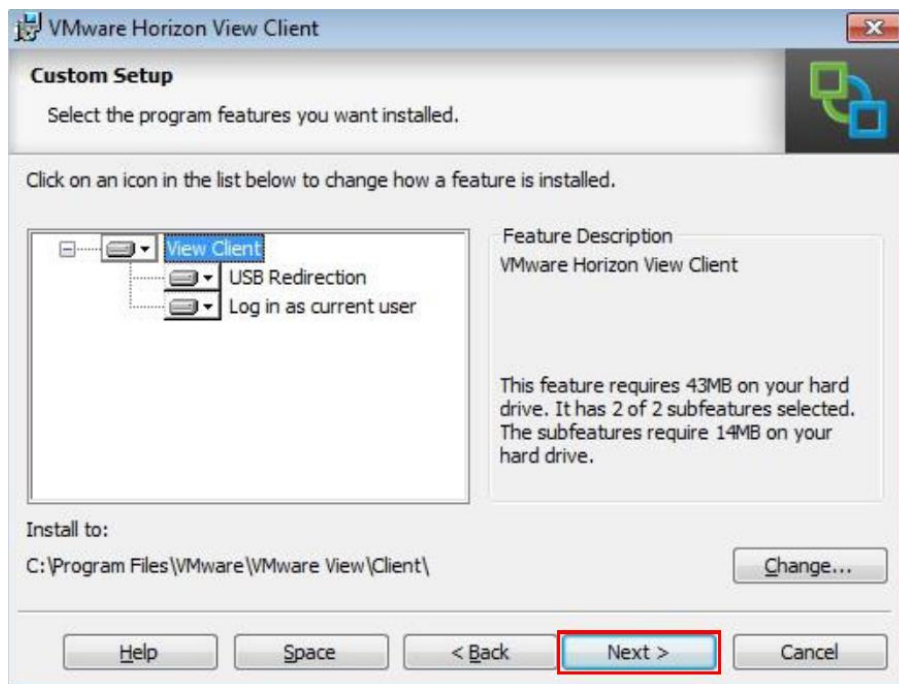
Step 5

Press next on the first box, and then accept the terms in the licence agreement.



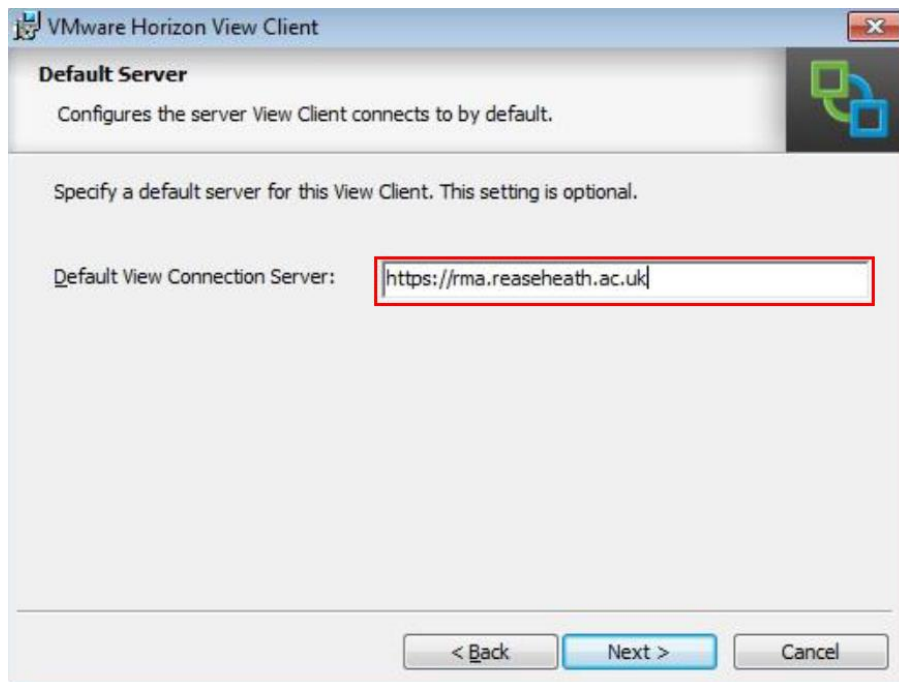
Step 6

Press next again on the following box.



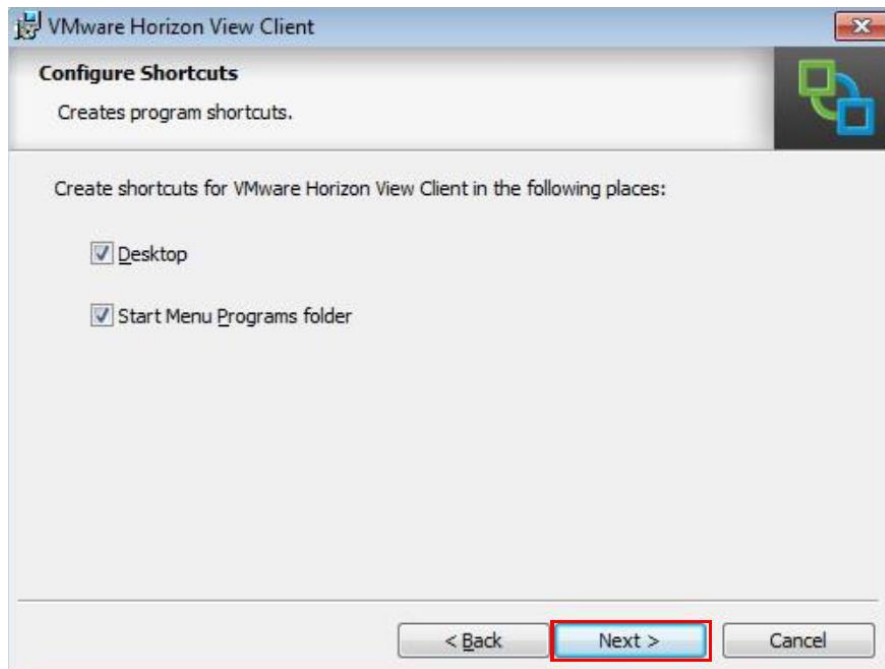
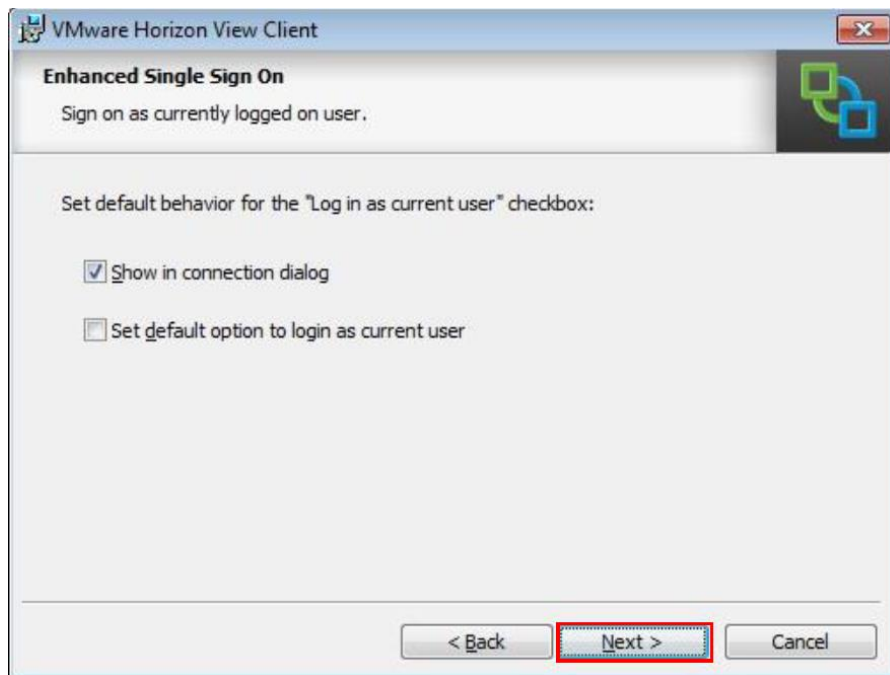
Step 7

Set the default View Connect Server to 'https://rma.reaseheath.ac.uk/' and click next.



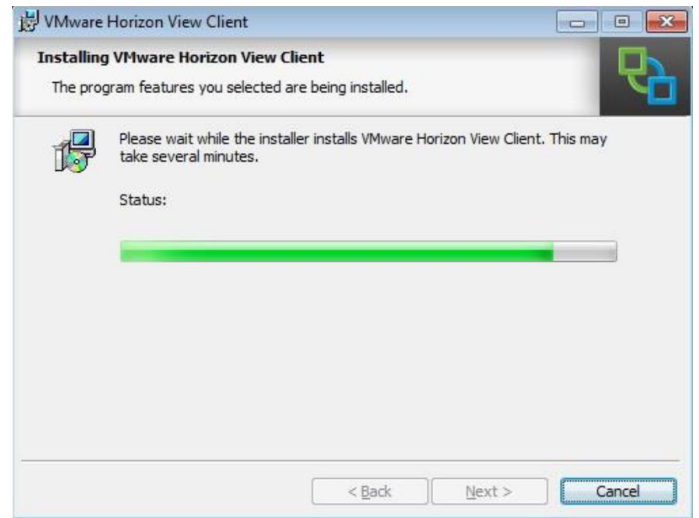
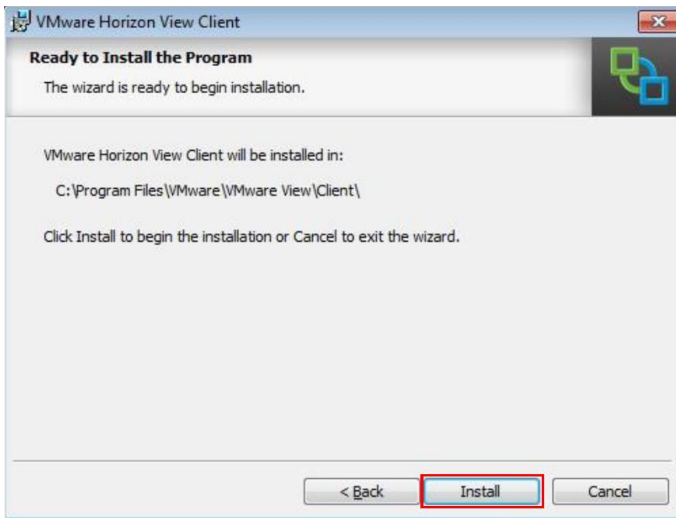
Step 8

Allow the Installation to complete by pressing next on the following:



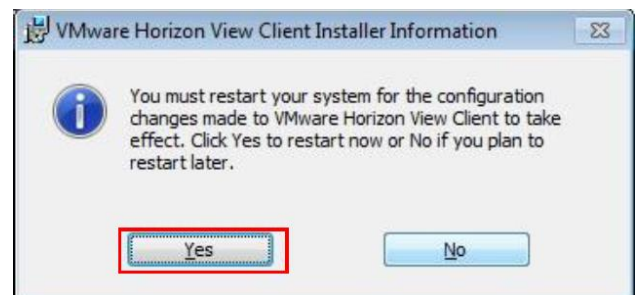
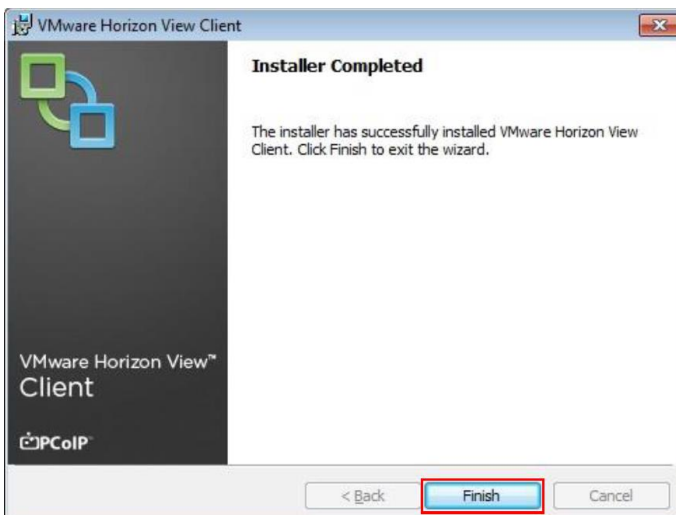
Step 9

Press 'Install' and then wait for the installation to complete.



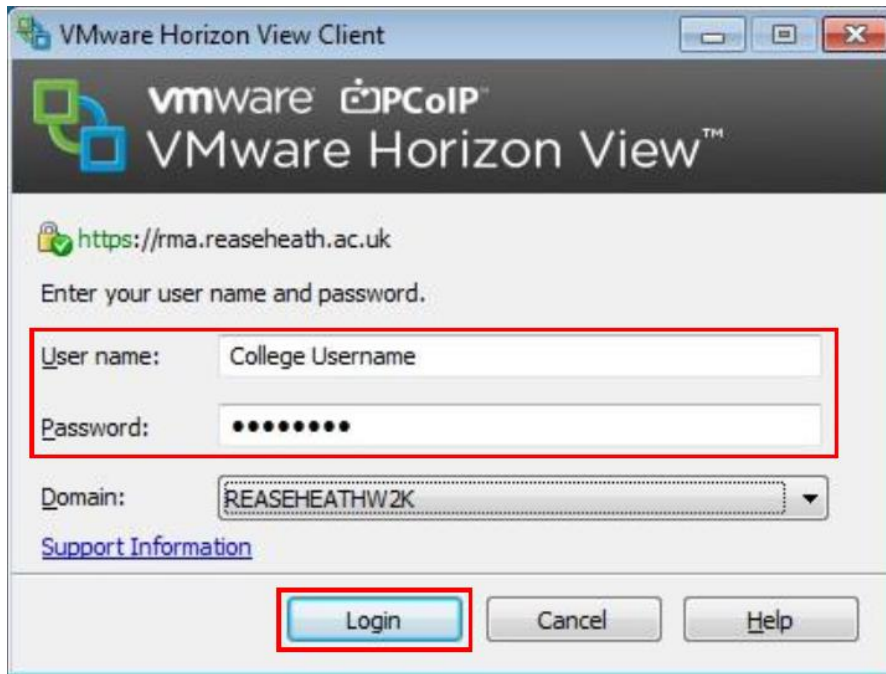
Step 10

After this you will need to click finish, and when prompted, restart your computer.



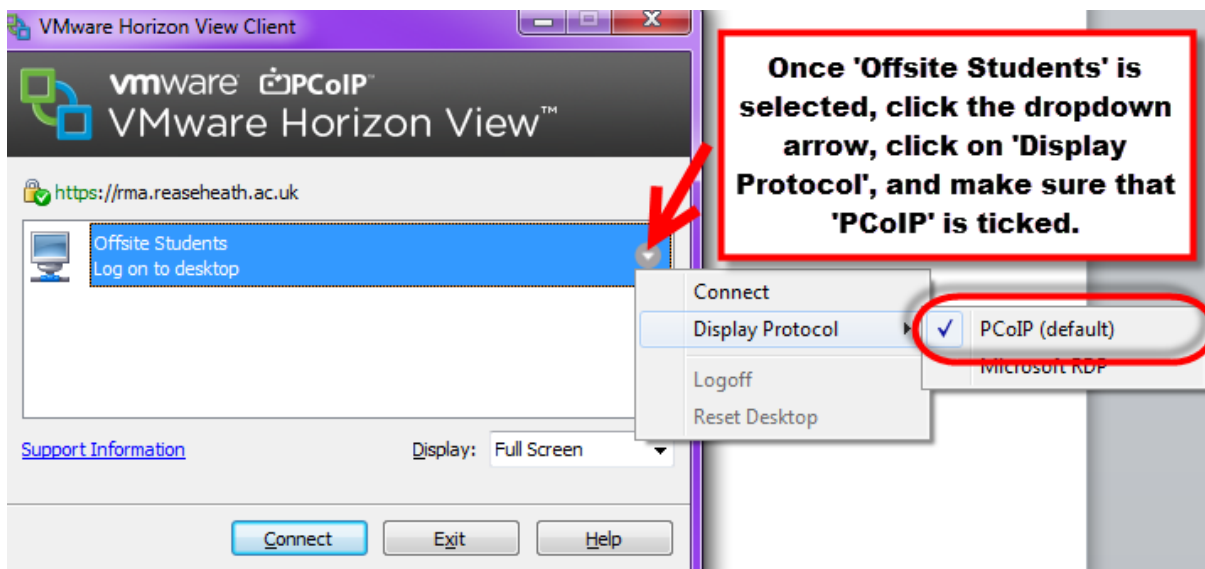
Step 11

After restarting your computer, open up the installed program, VMWare Horizon View Client, which can be located on your desktop, then type in your Username and Password which you use at college, and click 'Login'.



Step 12

Select the 'Offsite Students' pool.



*Then click 'Connect'