

FURTHER EDUCATION



STUDENT INFORMATION 2018



**YOUR REASEHEATH
JOURNEY STARTS HERE**

WELCOME TO REASEHEATH

I hope you find our 2018 Student Information Booklet helpful and informative and I thank you for your interest in Reaseheath College.

This booklet will provide you with the information you will require before you arrive at Reaseheath in September 2018.

It is only by meeting Reaseheath staff and seeing our excellent facilities and resources first hand that you will be able to fully appreciate the benefits of the Reaseheath experience. Few other colleges offer such wonderful surroundings and such caring, supportive and dedicated staff that will inspire you to achieve your full potential.

We are very proud of our strong links with industry that, coupled with our specialist facilities and staff, will help you to develop the skills and knowledge that will provide you with the best possible start to your chosen career. Many of our former students tell us that their time at Reaseheath was fantastically enjoyable, and changed their lives!

We look forward to welcoming you to our College in September.

Meredydd David OBE
Principal



CONTENTS

WE ARE REASEHEATH	4 – 7
Our Student Support Services	
YOUR REASEHEATH JOURNEY STARTS HERE	8 – 9
Let's get you on the road to a great future	
STEP 1 IT'S ALL ABOUT YOU	10 – 14
Further Education and Medical Forms	
Complete and return Registration and Medical forms	
STEP 2 GETTING TO REASEHEATH – TRANSPORT	15
Your guide to transport and travel options	
Applying for transport	
STEP 3 LIVING AT REASEHEATH – ACCOMMODATION	16
Your guide to student accommodation	
Applying for accommodation	
STEP 4 FUNDING YOUR FUTURE – FINANCIAL SUPPORT	17 – 21
Financial information for the journey ahead	
Applying for financial support	
STEP 5 GET YOURSELF KITTED OUT	22
Equipment and course essentials	
Ordering your clothing and equipment	
STEP 6 IT'S RESULTS DAY! – GCSE RESULTS	23
Your GCSE results 2018	
STEP 7 NEARLY THERE – ENROLMENT	24
How to enrol	
STEP 8 YOU'VE ARRIVED! – COLLEGE START DATE	25
Your first day at Reaseheath	
ADDITIONAL INFORMATION	26 – 27
Maths and English – developing your language, literacy and numeracy skills	
Term Dates	
Contact	

WE ARE

We care about your future and pride ourselves on providing a safe and stimulating environment for our students. We are graded Outstanding by Ofsted for the excellent support, development and care we provide. As a Reaseheath student, you'll have access to a range of excellent student support services including:



STUDENT SERVICES TEAM

Our Student Services Team are available to offer advice and support about things like:

- Accommodation and residential matters
- Financial Support
- Transport
- Medical Issues
- Security
- Social activities

01270 613 209

studentservices@reaseheath.ac.uk



TRANSPORT TEAM

Our Transport Team are here to help students with their travel arrangements including college bus applications, obtaining travel passes and general travel enquiries.

01270 613 209

transport@reaseheath.ac.uk



FE ENQUIRIES AND APPLICATIONS TEAM

Our dedicated E & A Team are here to help with all your general course enquiries and application queries and can offer advice throughout your application journey.

01270 613 242

feenquiries@reaseheath.ac.uk

REASEHEATH



STUDENT FINANCE

Our Student Finance Team are committed to providing advice and guidance on financial matters to our students.

01270 613 205

studentfinance@reaseheath.ac.uk



RECEPTION

Our Reception Team are here to welcome visitors and assist with general enquiries.

01270 625 131

enquiries@reaseheath.ac.uk



STUDENT WELLBEING SERVICE

Our Student Wellbeing Service is available to all students who are experiencing difficulties. Whatever the problem may be, our expert Wellbeing Advisors are here to support you or put you in touch with the relevant services.

COLLEGE COUNSELLING SERVICE

Our College Counselling Service can support you to deal with specific problems on a regular basis with referrals being made through our Wellbeing Department. We also have a College Chaplain and an on-site Prayer Room available for use.

01270 613 197

wellbeingteam@reaseheath.ac.uk



REASEHEATH CAREERS SERVICE

Offered to all students CEIAG (Careers, Education, Information, Advice and Guidance), is there to support you with choices and transitions in life. Our qualified advisors can offer advice and guidance on your next steps including job applications, applying to University, CV writing and cover letters.

01270 613 250

careers@reaseheath.ac.uk



MATHS AND ENGLISH

Our qualified Maths and English team are here to develop your language, literacy and numeracy skills.

01270 613 161

mathsandenglish@reaseheath.ac.uk



IT SERVICES

Our IT Services Team are available to help students with any IT issues including internet access, email facilities and accessing the Reaseheath College network.

01270 613 272

itservices@reaseheath.ac.uk



LEARNING SUPPORT

The experienced staff in our Learning Skills Centre (LSC) can provide additional learning support for students with a range of academic support needs. We offer targeted, individual assistance to enable you to access your chosen course. The LSC support and mentor students in a variety of ways including assisting with course work, developing study skills and supporting independent study.

01270 613 199

lsc@reaseheath.ac.uk



LIBRARY

Our Library Team can help you to access a wide range of books, e-resources and the internet to support you with your studies.

01270 613 226

library@reaseheath.ac.uk

'I access the LSC every week and they read through my work with me so I can understand it better. They're very helpful and I always feel welcome when I go there'

Eleanor Sherwood

Level 1 Certificate in Land Based Studies Animal Care



WE ARE REASEHEATH

YOUR REASEHEATH JOURNEY STARTS HERE



STEP 1

It's all about YOU!

Further Education Registration
and Medical Forms

STEP 2

Getting to Reaseheath

Your transport and travel options

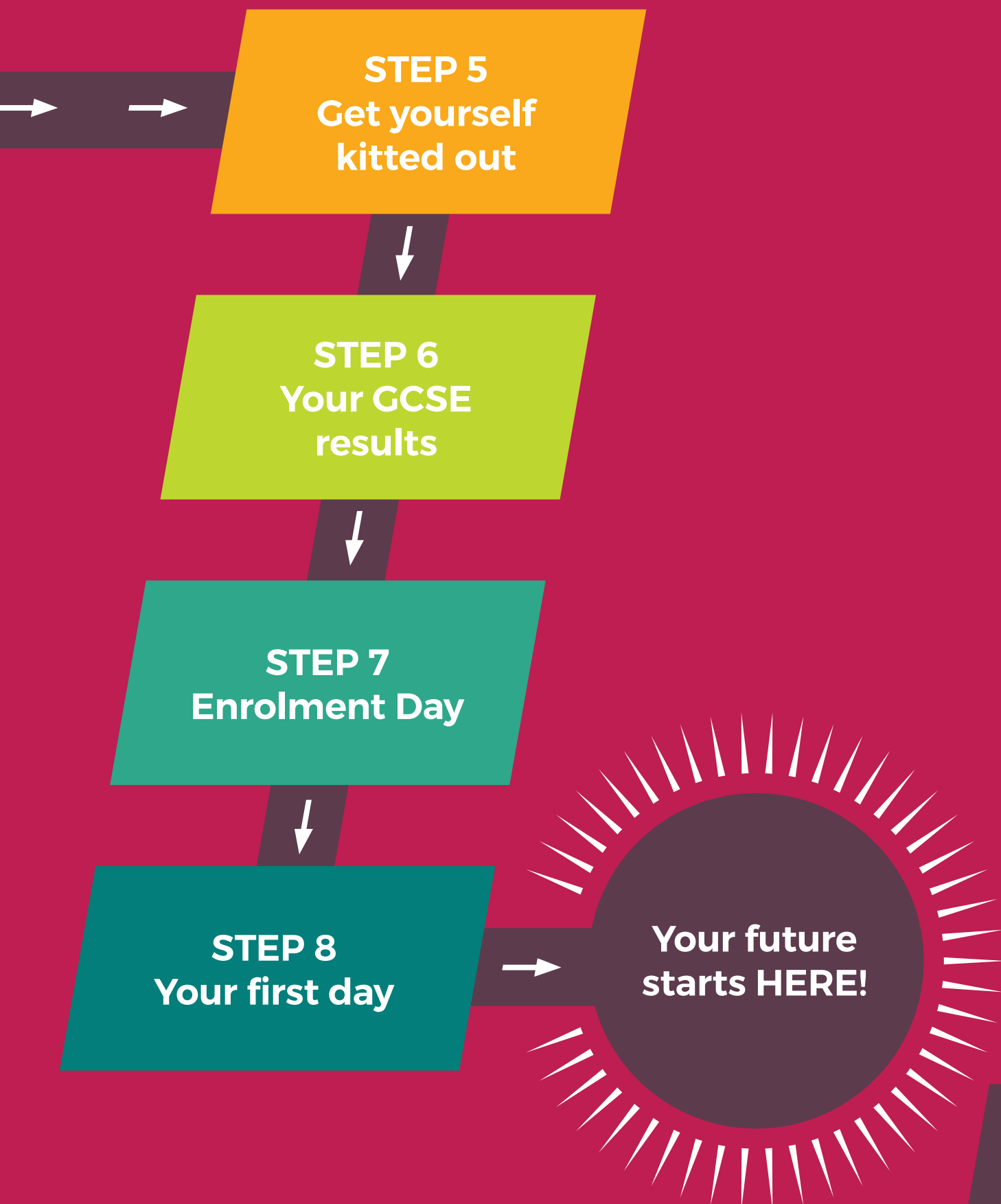
STEP 3

Living at Reaseheath

STEP 4

Funding your future

As you've been offered a conditional place at Reaseheath, this step-by-step guide will help you to chart your journey to starting your course with us in September.



STEP 1

IT'S ALL ABOUT YOU!

The first step on the road to becoming a Reaseheath student is to tell us more about **YOU**. We take your wellbeing very seriously and we require some essential information.

NEXT STEPS

To make your application run as smoothly as possible we need you to complete the Further Education Registration and Medical Forms enclosed in this section and return them to us within 7-days of receipt.

The forms need to be completed by **ALL** students (both new and existing).

You can return your forms by post to:

Enquiries and Applications Team
Reaseheath College
Nantwich
Cheshire
CW5 6DF

Or by email:

feenquiries@reaseheath.ac.uk

The following forms must be completed by ALL students and returned within 7 days to the above address.

FURTHER EDUCATION REGISTRATION AND MEDICAL FORM 2018

Your ULN (Unique Learner Number from school)	
--	--

Course Title and Level	Year of the course to be studied this year (please tick)		
	Year 1	Year 2	Year 3

First Name	Surname	Miss	Mr	Mrs	Ms	Other Title

Permanent Home Address		Term-Time Address if Non-resident (if different from home address)	
	Number of years lived at current address		
Postcode		Postcode	
Student Mobile		Student Mobile	
Telephone		Telephone	
Email Address		Email Address	

Date of Birth	Day	Month	Year	Age on 31st August 2018	

Please indicate your ethnic group									
Bangladeshi		Other Asian		Black Other		Mixed - White / Black African		White - British	
Indian		Black African		Chinese		Mixed - White / Black Caribbean		White - Irish	
Pakistani		Black Caribbean		Mixed White / Asian		Mixed - Other		White - Other	

Country of Birth	Country of Permanent Residence	Number of years living in the UK	Employment Status

Please tick if English is **NOT** your first language. ☐

APPLICATION TO KEEP A MOTOR VEHICLE AT COLLEGE			
I certify that the vehicle described below is licensed and insured and that I am legally entitled to drive.			
Registration Number		Make	
Model		Colour	
<p>NOTE: You must inform Student Services if your vehicle details change.</p> <p>There will be a fine of TEN POUNDS for vehicles parked in college which are not registered with the College Authorities.</p>			

STUDENT LEARNING SUPPORT

Do you have a learning difficulty which is likely to affect your studies? (example Dyslexia, Dyscalculia, Aspergers Syndrome).
If you haven't already spoken to our Learning Support team, please ring 01270 613199 to talk directly to a member of support staff.

Do you have a learning difficulty, disability or health problem(s)?

Yes

No

Do you have an Education Healthcare Plan?

Yes

No

If yes, please complete the following questions. The information you give will only be used to help make us make adaptations to support you in your course.

If you have a disability / health problem and / or learning difficulty please indicate:

Visual impairment		Hearing impairment		Dyslexia		Speech, language and communication needs	
Mobility		Other physical		Dyscalculia			
Medical		Emotional / Behavioural		Autism			
Mental / health		Temporary after illness		ADHD or ADD		Other	

Have you had exam access arrangements previously?

Yes

No

E.g. reader, scribe, extra time, prompt or word processor - if answered yes, please contact our LSC team on 01270 613 199

What is your previous highest level of study? (please tick)

Entry Level (less than 5 GCSEs at D-G)		Level 1 (5+ GCSEs D-G, NVQ1)		Level 2 (5+ GCSEs A*-C, NVQ2)	
Level 3 (2 A Levels A-E, AVCE or National Diploma full awards)		Higher Education (Degree, Level 4 qualifications)			

Tuition Fees (OVER 19's ONLY) Who do you expect to pay your tuition fees?

Self Funding		Employer Paying Fees		First Free Level 2 Qualification		First Free Level 3 Qualification		Advanced Learner Loan	
--------------	--	-------------------------	--	-------------------------------------	--	-------------------------------------	--	--------------------------	--

EMERGENCY CONTACTS

We need details of two emergency contacts for ALL students.

If you are under 18 years of age one of these MUST be your parent/guardian.

Contact Name	Relationship to you	Tel No. (including area code)	Mobile Tel No.
1.			
2.			
Email address for Contact 1:		Email address for Contact 2:	

MEDICAL FORM 2018

Contact Details

First names:			Surname:		
Date of birth			Please tick		
Day:	Month:	Year:	Residential		Non Residential

Name and Address of GP:					
Postcode:					
Telephone:					

Medical History

Do any of the below apply:

	Tick	Details	Medication	Frequency Medication taken
Allergies				
Auto Immune Disease				
Back Injury or Problems				
Joint Problems				
Mental Illness				
Neurological				
Physical Needs				
Respiratory				
Seizures inc. Epilepsy				
Sensory Needs ie: Hearing or Visual				
Skin Disorder				
Tuberculosis				
Other (please specify)				



Immunisation History

(Please tick as appropriate and give approximate dates).

	Tick	Details
Diphtheria / Tetanus / Polio		
Measles / Mumps / Rubella		
Meningitis 'C'		
BCG (Tuberculosis)		
Hepatitis 'A'		
Hepatitis 'B'		
Typhoid		
Yellow Fever		
Other (please specify)		

All routine treatments and immunisations (including travel) must be carried out by your registered GP. The exception is annual flu vaccines (if consent is given by completing the 'flu immunisation consent form) and BCG testing/vaccination, when it is part of the NHS program.

This personal information is required to enable us to establish a contractual relationship and fulfill our public duties, including supporting and safeguarding you during your time as a student. Full details of how we use and safeguard your data can be found in the Privacy Notice linked to the email we have sent to you, or in the physical copy supplied where relevant or at www.reaseheath.ac.uk/data-protection.

Student Declaration

I confirm that the information on the registration and medical forms are correct and that I have disclosed all relevant information that might affect my health and welfare at Reaseheath College.		
Student signature:	Printed name in full:	Date:
Parent signature if under 18:	Printed name in full:	Date:

STEP 2 GETTING TO REASEHEATH

You can now apply online for transport by visiting:
www.reaseheath.ac.uk/fejoininginfo

Please find below our range of transport and travel options which make getting to Reaseheath a smooth ride:

TRAVELLING BY BUS

Our fleet of college buses collect over 1,400 students every day from far and wide. What's more, **getting to Reaseheath is FREE from September 2018 on ALL bus routes.**

23 out of our 24 bus routes pick up at 7am or later and every high-quality coach is fitted with seat belts.

We ensure that all our drivers are DBS checked and when you arrive on campus you'll be met and supervised by college staff.

TRAVELLING BY TRAIN

We collect students from several train stations including two pick-ups from Crewe Railway Station. Students travelling by train will be issued with a FREE travel pass for our bus service from Crewe Railway Station to Reaseheath.

Financial support for train travel is available to eligible students from the Discretionary Learner Support Fund (**See STEP 4**).

For more information, visit
www.reaseheath.ac.uk/financial-support

TRAVELLING FROM FURTHER AFIELD

If you live outside of our bus routes you might want to consider residential student accommodation (**See STEP 3**).

For more information, visit
www.reaseheath.ac.uk/living-at-reaseheath

NEXT STEPS

For more information about bus routes (including collection times) or to apply online for transport arrangements, visit
www.reaseheath.ac.uk/transport

Places are limited on these services so we advise you to apply as soon as possible. Students are issued with their permanent pass at enrolment. Remember, our Student Services Team are happy to answer your transport queries on **01270 613 209** or by email: transport@reaseheath.ac.uk

'I have used college transport frequently for over a year and have always been happy with the service. The buses are always clean and tidy and they arrive on time. It is an easy and safe way to travel to Reaseheath'

Thomas Hughes
Level 3 Diploma in
Veterinary Nursing



STEP 3 LIVING AT REASEHEATH

You can now apply online for accommodation by visiting:
www.reaseheath.ac.uk/fe-accommodation

We understand that home is where the heart is, and our purpose-built, on-site residential student accommodation is fully supported by a safeguarding team.

We can accommodate approx. 1000 students in our halls of residence which are situated on campus with meals being served in Reaseheath's restaurant. Some halls also have a self-catering kitchen designated to a number of students.

Although many of our full-time students travel to college daily, any full-time student aged 16-years or older can apply for a residential place and a bursary may be available to help with living costs (**see STEP 4**).

Priority is given to students who live more than a reasonable daily travelling distance from Reaseheath or to those who would benefit educationally due to personal, welfare and social problems.

DID YOU KNOW?

That you can arrange to visit our residential student accommodation? Just contact our Student Services Team on **01270 613 209**.

NEXT STEPS

For more information about living at Reaseheath, visit www.reaseheath.ac.uk/fe-accommodation



'I was impressed by Reaseheath's facilities and their student accommodation when I was choosing a place to study. The halls I lived in during my first year were really nice and modern, and everyone got along well'

Lucy Lunt-Bell
L3 Extended Diploma in Horse Management



STEP 4 FUNDING YOUR FUTURE

You can now apply online for financial support by visiting:
www.reaseheath.ac.uk/fejoininginfo

Financial information for the journey ahead
If you're studying on a full-time course you may be eligible for means-tested financial support to help towards the cost of being a student.

You can apply for financial support to assist with accommodation costs, travel expenses or even for essential clothing and equipment. Please refer to the table on page 18 for further guidance.

STUDENT ID CARDS

Your Student Identity Card will give you access to buildings, the Learning Resource Centre and it's the easiest way to pay for all the catering and food facilities in the college.

Your card is linked to your Reaseheath 'Ways 2 Pay' account which provides access to the college cashless catering system. You can manage this online or from special terminals on campus.

Details about how to set up your online account will be emailed to you before the start of term. We use the email address you supply on the registration form enclosed in your welcome pack as your USERNAME for the 'Ways 2 Pay' system and to send you full instructions with your initial password.

We also offer an easy to use online payment facility which can be accessed 24 hours a day. Fees can be paid in full or by monthly instalments with a credit or debit card. Payments can be made online at **www.reaseheath.ac.uk/payments**

Don't forget that additional products and services can be purchased via our online store **<http://store.reaseheath.ac.uk>**

NEXT STEPS

It's important to apply for financial support as soon as possible to ensure you receive the outcome of your application before you enrol at Reaseheath.

We aim to process all applications within 2 weeks and a letter detailing the outcome will be emailed to you. For more information about fees and funding, visit: **www.reaseheath.ac.uk/finance**

Our Student Finance Team are also on-hand to answer any questions on **01270 613 205** or by email studentfinance@reaseheath.ac.uk

If you don't have access to the web then you can request a paper application form from our Student Finance Team on **01270 613 205** or by post to:

Student Finance Team
Reaseheath College
Reaseheath
Nantwich
Cheshire
CW5 6DF

FINANCIAL SUPPORT

TUITION FEES

If you are under 19-years old on 31st August 2018, tuition fees and exam costs are free. Students aged 19-years or over will be charged tuition fees as detailed on our website. If you must pay a fee, financial support may be available.

- Depending on your choice of course you may also be required to pay costs associated with study tours or additional qualifications. These costs are not included in your tuition fees.
- Tuition fees are due in full at the start of term in September. We do provide an option to set up an instalment plan online or with the Student Finance Team.
- After each half term, students with outstanding tuition fees or those who have failed to set up an instalment plan will be excluded from classes. Payments which continue to be outstanding will result in the student being excluded.

*Please note that fees are subject to change as the information is taken from external sources which may be updated throughout the year.

DISCRETIONARY LEARNER SUPPORT FUNDS

Limited Discretionary Learner Support Funds are available to contribute towards educational costs for students aged 16 and over. They are means-tested and targeted at those in greatest need. Funds can be used to help with:

- Tuition fees
- Childcare (applicants aged 20 years and over)
- Transport costs (rail, bus and car travel)
- Essential residential study tours and course equipment
- Meal allowance
- Stock duties

DISCRETIONARY VULNERABLE BURSARY FUNDS

Vulnerable Bursary Funds are available for young people in care, care leavers, young people in receipt of income support and disabled young people in receipt of Employment and Support Allowance who are also in receipt of Disability Living Allowance.

RESIDENTIAL BURSARY FUND

This bursary is designed to help students considering Further Education courses at Reaseheath College who live beyond a reasonable daily travel distance and are UK/EEA residents. The bursary provides financial assistance towards the cost of living away from home. Students residing in Wales may only be eligible for support where the course of study is not offered by a Welsh college.

ADVANCED LEARNER LOANS

Students over 19-years old on 31st August 2018 will be charged tuition fees as detailed on our website but for those wanting to study a Level 3 qualification or above, financial support may be available.

Advanced Learner Loans help you to cover some or all your tuition fees. They offer enhanced employability by enabling you to fast-track your career. Your household income isn't considered, there's no credit checks required, and they offer a low rate of interest.

To qualify, applicants need to be resident in the UK for the past 3 years and a UK national or have 'settled status' in the UK. If you're unemployed you are still eligible to apply.

Applications open in May 2018 for courses starting on or after 1st August 2018.

Further information is available from the National Careers Service www.nationalcareersservice.direct.gov.uk or contact our Student Finance Team on 01270 613 205 or studentfinance@reaseheath.ac.uk

COLLEGE COURSE BURSARIES

You may be entitled to claim additional funds from College Course Bursaries. These include:

- Studley College Trust
- Henmans Trust
- City & Guilds Bursary
- John Platt Travel Scholarship
- Nantwich Christian Council Millennium Bursary

Further Information:

www.reaseheath.ac.uk/financial-support

CARE TO LEARN

The Care to Learn scheme is available to parents under the age of 20-years-old when they enrol in the 2018/19 academic year.

Care to Learn enables young parents to continue in or return to learning after the birth of a child by assisting with the costs of childcare and associated travel.

EMA / ALG WALES

Any Welsh post coded learner who attends college in England can apply for EMA or ALG.

Further information:

www.studentfinancewales.co.uk/ema

Telephone: **0300 200 4050**

FREE COLLEGE MEALS

Students facing financial hardship aged between 16-18 years old on 31st August 2018 may be eligible for free college meals.

NOTES FOR COMPLETING YOUR FINANCIAL SUPPORT APPLICATION

- All students must fully complete and submit a Financial Support Application even if they have previously received an award. Awards are non-transferable between academic years.
- All household income must be declared in the application. Copies of evidence of each income/benefit should be submitted. Evidence can include a P60, Tax Credit Award notification, a letter of confirmation of current benefits or an accountant's letter. The previous financial year is used for income assessment except when a change in circumstances during the year has affected income. If your current income has changed since April 2018, we request that new evidence and a letter detailing changes is submitted.
- Applications due to a change in circumstances will be considered at any point during the academic year.
- Please ensure that you tick the box for each area you require assistance with. If you do not request assistance by 1st October 2018 your application may not be processed.
- Applications received after the closing date or incomplete applications will not be backdated for the period prior to the request.
- Applications received after the closing date cannot be guaranteed support due to the limited funds available. Some funds are held in reserve to help students whose financial circumstances have changed during the academic year. In such circumstances, late applications will be considered.
- Kit lists detailing equipment eligible for support are provided by our Student Finance Team.
- Students awarded Free College Meal allocation will receive a daily allowance on their student ID card. This figure is not redeemable in cash.
- Paper application forms must be signed and dated. A parents' signature is required if the student in question is under 18-years-old.

STEP 5 GET YOURSELF KITTED OUT

You can now order your clothing and equipment online by visiting:
www.reaseheath.ac.uk/online-store

EQUIPMENT AND COURSE ESSENTIALS

Congratulations! You're over halfway through your application journey and now you need to get kitted out with those course essentials.

SHOP ONLINE WITH REASEHEATH

Reaseheath's online shop was created to give students, parents and guardians the opportunity to purchase college items at their own convenience in an easy and secure environment.

Our online shop can be used to pay for:

- **Accommodation**
- **Clothing**
- **Stationery**
- **Study tours**
- **College events and clubs**
- **Exam resits**
- **Laundry costs**
- **Stocks**

It's easy to use and once you've set up your account and log-in details you can buy what you want, when you want it.

NEXT STEPS

More information about the equipment needed for your course of study can be found here:

www.reaseheath.ac.uk/fejoininginfo

To look at what's on offer, visit
www.reaseheath.ac.uk/online-store

DID YOU KNOW?

You can keep up-to-date about the products and services available in our online shop by following our dedicated Twitter page, [@RHC_OnlineShop](https://twitter.com/RHC_OnlineShop)

STEP 6 IT'S RESULTS DAY! GCSE RESULTS 2018

**Your GCSE results will be published
on Thursday 23rd August 2018.**

NEXT STEPS

- 1) **Stay calm! Once you have received your results just bring them along with you to your enrolment day (see page 24).**
- 2) **We will contact you by the end of July to inform you of when to enrol.**
- 3) **On your enrolment day we need to see your GCSE statement of results or individual certificates, and any other relevant certificates such as Functional Skills.**

**PLEASE REMEMBER THAT YOU
CANNOT ENROL WITHOUT
PRODUCING THESE DOCUMENTS.**

Our dedicated Enquiries and Applications Team will be on stand-by to answer any questions or concerns you may have on **01270 613 242** or by email: **feenquiries@reaseheath.ac.uk**

GOOD LUCK!



STEP 7 NEARLY THERE... ENROLMENT

HOW TO ENROL

The penultimate step of your application journey is enrolment day.

We will send you a letter by the end of July to confirm your allocated day and time to enrol at Reaseheath.

Enrolment will take about an hour and during your visit you will:

- **Meet your Course Tutor**
- **Collect Bus passes**
- **Receive your Student ID Badge and Student Diary/Handbook**
- **Discuss your Maths and English requirements**

In the meantime, if you have any queries regarding enrolment please contact our Enquires and Applications Team on **01270 613 242** or by email: **feenquiries@reaseheath.ac.uk**

STEP 8 YOU'VE ARRIVED

YOUR FIRST DAY AT REASEHEATH

Congratulations, you have reached your destination and your future starts with these all-important dates:

NON-RESIDENTIAL (YEAR 1 STUDENTS)	Tuesday 4th September 2018 9am To meet in the Lord Woolley Centre
NON-RESIDENTIAL (YEAR 2 AND 3 STUDENTS)	Monday 10th September 2018 9am To meet in the Lord Woolley Centre (or your classroom if known)
RESIDENTIAL (YEAR 1 STUDENTS)	Sunday 2nd September 2018 between 1pm – 6pm To meet in Student Services
RESIDENTIAL (YEAR 2 AND 3 STUDENTS)	Sunday 9th September 2018 between 1pm – 6pm To meet in Student Services

Please refer to your enrolment letter you will receive in July to confirm which date you need to attend.

If you are unsure of whether you are considered as a Year 1, 2 or 3 student, please call our Enquiries and Applications Team on **01270 613 242** or feenquiries@reaseheath.ac.uk who will be happy to help you.

WE LOOK FORWARD TO WELCOMING YOU!

MATHS AND ENGLISH

Employers are the first to stress that a satisfactory level of understanding in Maths and English is essential to the world of work.

At Reaseheath, we take the overall education of our students and their employment prospects very seriously. Therefore, we are committed to developing your language, literacy and numeracy skills to aid your future progression.

Achieving GCSEs to at least the standard of Grade 4 level (or Grade C) in Maths and English is important for your employment prospects and academic progression. Reaseheath students who have not attained these grades will commence a tailored pathway until Grade 4 (or above) is achieved.

You'll be fully supported by a dedicated team of specialist Maths and English tutors who will deliver a suitably challenging programme of study. Students who enrol with a Grade 4 in Maths and English will be encouraged to further develop their understanding to ensure that they are well equipped to enter their chosen industry.

For students under the age of 19-years it is a government requirement that we facilitate their language, literacy and numeracy skills. Students aged 19-years and over who are yet to achieve GCSEs at Grade 4 level will be given the option of studying suitable Maths and English qualifications free of charge.

'I wasn't switched on to maths at school, but when I came to Reaseheath I decided that I really do need decent grades to succeed in life. I've put effort in and it's got easier. I like the way the lecturers teach maths here. They explain it really well and I can always get help if I need it'

Brandon Whitehead
Level 2 Diploma in Horse Studies



NEXT STEPS

We'll be on hand to talk about your Maths and English qualifications during enrolment day. You don't need to do anything further until then.

If you should wish to talk to us before enrolling please contact us on **01270 613 161** or by email: **mathsandenglish@reaseheath.ac.uk**

TERM DATES 2018/19

Sunday 2nd September 2018	First year residential students start
Tuesday 4th September 2018	First year non-residential students start
Sunday 9th September 2018	Second/third year residential students start
Monday 10th September 2018	Second/third year non-residential students start
Monday 29th October – Friday 2nd November 2018	Half term
Thursday 20th December 2018	Finish for Christmas
Monday 7th January 2019	Term starts
Monday 18th – Friday 22nd February 2019	Half term
Monday 8th – Monday 22nd April 2019	Easter holiday
Tuesday 23rd April 2019	Term starts
Monday 27th – Friday 31st May 2019	Half term
Friday 28th June 2019	End session

USEFUL CONTACTS

(Available Monday – Friday 8.30am – 5pm)

Further Education Enquiries and Applications General Enquiries Application Enquiries	01270 613 242 feenquiries@reaseheath.ac.uk
Student Finance Tuition Fees Advanced Learner Loans Discretionary Learner Support Fund Residential Bursary Fund Information	01270 613 205 Studentfinance@reaseheath.ac.uk
Student Services Accommodation Transport Student Safeguarding (24 hr. service)	01270 613 209 studentservices@reaseheath.ac.uk 07889 216 789
Student Wellbeing (Monday-Friday 8am-6pm)	01270 613 197 wellbeingteam@reaseheath.ac.uk
Student Data	01270 616 445
IT Helpdesk	01270 613 272 itservices@reaseheath.ac.uk
Learning Difficulty/ Disability Advice Exam Access Arrangements Education Health and Care Plans	01270 613 199 lsc@reaseheath.ac.uk
Catering Department	01270 613 248 catering@reaseheath.ac.uk
Library	01270 613 226 library@reaseheath.ac.uk

FE COURSE ENQUIRIES AND APPLICATIONS

T 01270 613 242

E feenquiries@reaseheath.ac.uk

GENERAL COLLEGE ENQUIRIES AND RECEPTION

T 01270 625 131

E enquiries@reaseheath.ac.uk

