



TURN YOUR
PASSION
INTO YOUR
CAREER



EXPERIENCE REASEHEATH

Course Open Events 2018

Saturday 20th October
Saturday 17th November
Saturday 8th December

Course Open Events 2019

Saturday 19th January
Saturday 9th February
Saturday 16th March
Saturday 27th April
Saturday 8th June

Arrive at 10am for a 10.30am start

Year 10 Taster Days 2019

Wednesday 3rd July
Thursday 4th July

Year 11 Taster Day 2019

Friday 5th July

Reaseheath Family Festival

Sunday 19th May 2019

Visit our website for all upcoming
events and taster days
reaseheath.ac.uk/experience

COURSES

CONTENTS

ANIMAL, EQUINE AND VETERINARY NURSING ACADEMY	
ANIMAL MANAGEMENT	36
EQUINE	42
VETERINARY NURSING	48

LAND AND SUSTAINABLE ENVIRONMENT ACADEMY	
AGRICULTURE	54
AQUATIC ECOSYSTEMS AND FISHERIES MANAGEMENT	60
ENVIRONMENTAL CONSERVATION	66
FLORISTRY	72
FORESTRY AND ARBORICULTURE	78
GAME MANAGEMENT	84
HORTICULTURE	90

HEALTH, SPORTS SCIENCE AND PERFORMANCE ACADEMY	
ADVENTURE SPORTS	96
PERSONAL TRAINING	102
PUBLIC SERVICES	108
SPORT	114

RURAL BUSINESS AND NATIONAL FOOD ACADEMY	
BAKERY, PÂTISSERIE AND CONFECTIONERY	120
BUSINESS AND EVENTS MANAGEMENT	126
FOOD TECHNOLOGY	132
RURAL BUSINESS PATHWAY	35

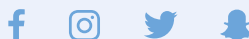
ENGINEERING, TECHNOLOGY AND CONSTRUCTION ACADEMY	
AGRICULTURAL ENGINEERING	138
CONSTRUCTION	144
ENGINEERING APPRENTICESHIPS	150
MOTOR VEHICLE	156

FOUNDATION LEARNING AND LIFE SKILLS ACADEMY	
ENTRY AND FOUNDATION LEARNING	162

WELCOME TO REASEHEATH.....	4
WHY CHOOSE REASEHEATH?.....	6
THE REASEHEATH CAMPUS.....	8
A SUPPORTIVE ENVIRONMENT TO LEARN.....	10
STUDENT LIFE.....	12
FEES AND FUNDING.....	14
LIVING AT REASEHEATH.....	16
GETTING TO REASEHEATH.....	18
CHOOSING THE RIGHT COURSE FOR YOU.....	20
BE READY PASSPORT.....	24
APPRENTICESHIPS.....	28
YOUR NEXT STEPS AFTER COLLEGE.....	30
HOW TO APPLY.....	168
THE COLLEGE MISSION.....	170
WHERE IS REASEHEATH?.....	171

Social media

Stay connected – follow us on Instagram, Snapchat, Facebook and Twitter!



WELCOME TO REASEHEATH COLLEGE

WE ARE DELIGHTED YOU HAVE
JOINED ONE OF THE LEADING
SPECIALIST LAND-BASED AND
TECHNICAL COLLEGES IN
THE COUNTRY.

WE WILL DO EVERYTHING
WE CAN TO ENSURE YOUR
TIME IS PRODUCTIVE AND
THAT YOU SECURE THE BEST
POSSIBLE OUTCOME FOR
YOUR FUTURE.

Your Reaseheath Experience and BeReady Passport will prepare you for life. You will become a well rounded individual and gain vital skills for work, for study at higher education, for your health and wellbeing, for contributing to society, and for your chosen career.

We want you to enjoy your studies and ensure you are challenged and stretched to achieve as much as possible. We will support you as you progress regardless of your age or the level or type of course you are studying. Your qualification, industry experience and expanding CV will all help when you are seeking employment or entry into higher education. We will help you to develop the attributes that employers want, including maths and English, enterprise skills, confidence, initiative, resilience and teamwork.

We are proud of our very high pass rates and of the exceptional number of students who progress into employment or onto degrees. This is due to the passion and expertise of our staff and the hard work and commitment of our students. There's no doubt that the more you put into your studies, the more you will get out of it!

We want you to enjoy your studies and ensure you are challenged and stretched to achieve as much as possible

But Reaseheath is not about 'all work and no play'. You will be encouraged to join in the many recreational and social elements of college life which are equally key to your success and enjoyment. I am sure you will remember your Reaseheath Experience as one of the best times of your life!

I wish you every success and look forward to celebrating with you at our Presentation of Awards once you have completed your qualification.



Marcus Clinton

Principal and CEO
Reaseheath College



WHY CHOOSE REASEHEATH?

£80 MILLION INVESTED
ON CAMPUS INTO CUTTING
EDGE TECHNOLOGY AND
SPECIALIST TRAINING FACILITIES

OUR LATEST **OFSTED**
INSPECTION CONFIRMED
WE **CONTINUE TO BE**
A GOOD COLLEGE

93% OF STUDENTS WOULD
RECOMMEND THE
COLLEGE TO A FRIEND

ALL STUDENTS COMPLETE
A **RELEVANT WORK**
PLACEMENT GIVING YOU
INVALUABLE EXPERIENCE
AND ADDING TO YOUR CV!

OUR **STRONG LINKS**
WITH EMPLOYERS MEANS
YOU'LL LEAVE COLLEGE
WITH THE SKILLS AND
KNOWLEDGE **INDUSTRY**
WANTS AND NEEDS

OUR **EXPERT TUTORS**
ARE FIRST CLASS AND
HAVE VAST KNOWLEDGE
AND EXPERIENCE OF
THEIR INDUSTRY

Strong links
with employers,
expert tutors,
Outstanding Ofsted
Care Standards,
- it's all here!

OUR **OUTSTANDING
OFSTED CARE
STANDARDS** INSPECTION
CONFIRMS WE'RE AMONG
THE **BEST COLLEGES**
IN THE COUNTRY **FOR
STUDENT SUPPORT**

FREE TRANSPORT*
ON ALL COLLEGE BUS ROUTES

ALL STUDENTS COMPLETE
OUR **BE READY PASSPORT**
PROGRAMME – GIVING YOU ALL
THE SKILLS YOU NEED TO START
YOUR JOURNEY TO EMPLOYMENT

**96% OF STUDENTS
PROGRESS INTO
EMPLOYMENT OR
FURTHER STUDY**

*Subject to terms and conditions

THE REASEHEATH CAMPUS

Reaseheath has some of the best specialist facilities and resources in the country, thanks to a continuing £80 million investment across campus.

Our industry standard facilities provide you with realistic training environments and help to fully prepare you for the world of work.

We're investing in your future!

As well as having a zoo, farm and equestrian centre on-site we've invested into facilities across all of our course areas. Some of our recently opened facilities include:

- New Technology Park home to our £8 million Advanced Engineering and Agri-Tech Centre and £6 million Sports Science and Performance Academy with Sports Hall, Fitness Studio and Fitness Testing Lab
- 3G Rugby Pitch and Multi Use Games Area (MUGA)
- £8 million National Centre for Horticulture, the Environment and Sustainable Technology
- Science Laboratories

Our friendly campus

You will be studying in the beautiful rural setting of Cheshire, one mile from the market town of Nantwich with good connections to Manchester, Liverpool and Chester.

The Reaseheath campus itself is small enough to retain its friendly, family atmosphere, but large enough for you to be able to mix with lots of groups of students.

Our front lawn is great to sit out on with friends and you can even enjoy an ice cream next to the college lake during the summer.

On campus we have:

- Free WiFi connection across main campus areas
- Gym with state-of-the-art equipment
- Library and Learning Resource Centre
- Student bar, social area and under 18s common room
- 5 catering outlets including the Reaseheath Restaurant, Feast Café and Bootzone
- IT teaching centre
- On-site accommodation for 1,000 students in 17 halls of residence



To find out
more about
the facilities for
the course you're
interested in
read on...



A SUPPORTIVE ENVIRONMENT TO LEARN

We pride ourselves on providing a safe and stimulating environment for you to learn

We care about your future and pride ourselves on providing a safe and stimulating environment for you to learn. We are graded Outstanding by Ofsted for the excellent support, development and care we provide to our students.

You will have a course tutor who will guide you through your course and is always willing to listen if you have a problem. However, we understand that sometimes it can be easier talking to someone outside of your curriculum area.

So in addition we offer a range of support to all students through Student Services, the Student Health and Wellbeing Service and the Learning Skills Centre (LSC).

Student Services

Reaseheath's Student Services Team are available to offer advice and support with such things as:

- Accommodation and residential matters
- Financial support
- Transport
- Medical issues
- Security
- Social activities

Student Health and Wellbeing Service

Our Student Health and Wellbeing Service is available to all students who may be experiencing difficulties. Whatever the problem may be, our expert Wellbeing Advisors are here to help or they can put you in touch with the relevant services.

College Counselling Service

The College Counselling Service can help support you with specific problems on a regular basis. If you do need support, referrals are made through the Student Health and Wellbeing Service.

We also have a College Chaplain and an on-site prayer room available for use. If you have any specific issues you would like to discuss in confidence prior to starting college, you can contact our Wellbeing Advisors or the College Chaplain on **01270 613197**.





Learning support

The experienced staff in our Learning Skills Centre (LSC) provide additional learning support for those students with a range of academic support needs.

We offer targeted, individual assistance to enable you to access your chosen course. The LSC support and mentor students in a variety of ways including assisting with course work, developing study skills and supporting independent study.

If you would like to talk to a member of the Learning Skills Team please call us on **01270 613199** or email **lsc@reaseheath.ac.uk**

The team are also available at Course Open Events.

Eleanor Sherwood

Level 1 Certificate in Animal Care

"I access the LSC every week and they read through my work with me so I can understand it better. They're very helpful and I always feel welcome when I go there"



Library

Our Learning Resource Centre (LRC) offers library and information services, WiFi access, open access computers, printers and a photocopier as well as designated group and silent study areas.

We aim to give you a helpful and friendly service and provide you with the books, journals and electronic resources that you will need for your course. As well as a range of novels, talking books and DVDs for leisure.

Reaseheath Careers Service

Our qualified careers advisors are there to offer advice and guidance on your next steps. They can help you to decide which career pathway is best suited for you by considering your interests and your abilities, and will support you in finding out information on your options following your course.

Reaseheath Careers Service are also there to help students with CV writing and cover letters, job interviews, job applications and applying to University.

Parents' guide

We recognise that deciding what and where to study and knowing that your son or daughter will be looked after whilst at college is important to you as a parent. For further information visit **reaseheath.ac.uk/parents**

STUDENT LIFE

With so many clubs, societies and forums that you can join, and a lively programme of social events arranged by the Student Life Team, there is plenty to do in your free time.

Our student social area in the heart of the campus, has a pool table, table tennis and large screen TVs, making it a great place to relax and meet with friends.

Reaseheath Student Association

The Reaseheath Student Association works alongside the Student Life Team to organise a wide variety of social activities on-site, including the popular Thursday Social, karaoke and live bands, as well as exciting off-site activities such as go-karting, cinema visits and shopping trips.

Sports

Choose from a wide range of sporting activities – you could join our football, rugby or netball teams and even compete in the North West Association of Colleges (AoC) Sports Leagues, as well as take part in our own friendly league fixtures against other land-based colleges. You can also try out badminton, jujitsu, 5-a-side football, yoga, Clubbercise or indoor climbing.

Our college gym is open to all students and has a range of state-of-the-art equipment including a variety of cardiovascular and resistance machines as well as a vast choice of weights and a hi-tech lifting platform. Membership is just £80 for the year.

You will also have the chance to complete Duke of Edinburgh awards at Reaseheath. This is a great way to try out new activities and a fantastic opportunity to boost your CV whilst gaining a highly valued award.

RAG fundraising

Each year our students select a charity to raise funds for throughout the academic year. A highlight of the student calendar is RAG (Raising and Giving) Week. Our students raise lots of money for charity through raft races, socials, town centre collections, tractor pulls, helping at community events and much, much more!

Clubs and societies

If you're looking to take up a new sport, meet like-minded people or try something new, we have lots of clubs and societies that you can join. From creative arts to conservation, a cappella to photography, there's something to suit most interests!

Summer celebrations!

A highlight of the year is the college's annual Summer Ball organised by the Student Association. Previous years have seen Reaseheath host special guests including radio DJs Scott Mills and The Dixon Brothers, Basehunter, the Hoosiers and X Factor star George Shelley!

Presentation of Awards Ceremony

On completing your course, you will be invited to celebrate your success at our annual awards ceremony along with your family and friends.

To see what our students have been up to lately follow Reaseheath Student Association on Facebook or visit our website reaseheath.ac.uk/student-life





Last year
Reaseheath
College students
raised over
£20,000 for
local charities



FEES AND FUNDING

If you are under 19 on 31st August 2019 the tuition fees and exam costs are free for our courses. If you are aged 19 or over, and you have to pay a fee, financial support may be available through Advanced Learner Loans, see page 15.

Depending on which course you choose you may be required to pay costs associated with study tours and trips or additional qualifications. These costs are not included in the tuition fees.

If you are studying on a full time course you may be eligible for means-tested financial support to help towards the cost of being a student.

You can apply for money to help with your accommodation, travel costs, essential clothing and equipment or even your food while you are at college!

For further information on the financial support available to you visit reaseheath.ac.uk/finance

For advice on fees and funding contact the Student Finance Team on **01270 613205** (Monday – Thursday 8.30am – 5pm, Friday 8.30am – 4.30pm) or email studentfinance@reaseheath.ac.uk

Please note the information here may be subject to change. For the latest updates please visit our website.

Reaseheath College offers advice and guidance on financial assistance to all students

FINANCIAL SUPPORT AVAILABLE TO YOU

Discretionary Learner Support Fund

Limited Discretionary Learner Support Funds are available to contribute towards educational costs for students aged 16 and over. They are targeted at those in greatest need, with a household income below £31,000. An assessment of household income will be made to determine the level of assistance to be awarded.

Free College Meals

Students facing financial hardship, aged between 16–18 on 31st August 2019 may be eligible for free college meals.

Residential Bursary Fund

This bursary is designed to help students to access education that is not available within reasonable daily travel of their home address and can be used to assist with college accommodation costs or landlord fees if applicable.

Vulnerable Bursary Fund

Funding is also available to students to help those in greatest need, who reside in England and are aged 16–18. For example young people in care, care leavers, young people in receipt of income support, and disabled young people in receipt of Employment and Support Allowance who are also in receipt of Disability Living Allowance / Personal Independence Payment.

College Course Bursaries

You may be entitled to claim additional funds from College Course Bursaries. Visit reaseheath.ac.uk/financial-support for more information.

Care to Learn

Care to Learn enables young parents under the age of 20 to continue in or return to learning after the birth of a child by assisting with the costs of childcare and associated travel.

EMA / ALC Wales

Any Welsh post coded learner who attends college in England can apply for EMA or ALC.

Advanced Learner Loan

If you are aged 19+ and are thinking about studying a level 3 qualification, the Advanced Learner Loan could help you study on a course to support you in a change of career.

LIVING AT REASEHEATH

Although many of our full time students travel to college daily, we have on-site residential accommodation for up to 1,000 students, fully supported by a safeguarding team.

Any full time student aged 16 and over may apply for a residential place and a bursary may be available to help with costs. Places are limited* so please ask for up to date details once you have been offered a place on a course.

All of our halls of residence are situated on campus. Breakfast, lunch and evening meals are provided each day in the Reaseheath Restaurant. Some halls also have a self-catering kitchen designated to a number of students.

Accommodation fees are based on a full academic year, excluding half terms, Christmas and Easter breaks, and are charged on a termly basis.

Reaseheath has residential places for students who require accessible facilities.

Come and see for yourself

You will have the opportunity to view our residential student accommodation and visit a typical student room if you attend one of our Course Open Events or at your interview.

Next steps

For more information about living at Reaseheath, visit reaseheath.ac.uk/fe-accommodation or contact the Student Services team on **01270 613209** or email accommodation@reaseheath.ac.uk

Ofsted 'Outstanding' for Care Standards

Our latest Care Standards Ofsted inspection confirms that we continue to provide first rate standards of care which help and protect our students and prepare them for safe and happy futures.

The inspectors found that we offer remarkable experiences and opportunities for students and that they make excellent progress while at college. We were also commended for our 'exceptional relationships and strong family values that help students thrive.'



Lucy Lunt-Bell

Level 3 Extended Diploma in Horse Management

"I was impressed by Reaseheath's facilities and their student accommodation when I was choosing a place to study.

The halls I lived in during my first year were really nice and modern, and everyone got along well"



*Priority is given to students who live far away from Reaseheath and are unable to travel in on a daily basis, or would benefit educationally due to personal welfare and social problems.



**"Reaseheath's
residential provision
for students aged
between 16 and 18
years is outstanding"**

Ofsted Care Standards
Inspection 2017



GETTING TO REASEHEATH

We offer a range of transport and travel options which make getting to Reaseheath a smooth ride.

Travelling by bus

Our college bus service collects over 1,400 students every day from far and wide. What's more, getting to Reaseheath is FREE* on all college bus routes.

23 out of our 24 bus routes pick up at 7am or later and every high-quality coach is fitted with seat belts.

We ensure that all our drivers are DBS checked and when you arrive on campus you'll be met and supervised by college staff.

Travelling by train

We collect students from several train stations including two pick ups from Crewe Railway Station. Students travelling by train will be issued with a FREE college bus pass for our bus service from Crewe Railway Station to Reaseheath.

Financial support for train travel is available to eligible students from the Discretionary Learner Support Fund, see page 15.

Making your own way in

If you have your own car we have free parking spaces available and plenty of bike shelters for those students who cycle in to college.

Further afield

If you live outside of our bus routes you might want to consider residential student accommodation, see page 16.

Next steps

For detailed information on our bus routes, including pick up times, visit reaseheath.ac.uk/transport or contact our Transport Team on **01270 613209** or email transport@reaseheath.ac.uk

You can also find out more information on current bus and train routes at one of our Course Open Events or at your interview

Thomas Hughes

Level 3 Diploma in Veterinary Nursing

"I have used college transport frequently for over a year and have always been happy with the service. The buses are always clean and tidy and they arrive on time. It is an easy and safe way to travel to Reaseheath"



*Subject to terms and conditions

College bus routes

- Chester
- Chirk and Wrexham
- Congleton
- Craven Arms and Shrewsbury
- Crewe and Nantwich
- Ellesmere Port
- Hanley
- Knutsford, Northwich and Middlewich
- Leek
- Liscard
- Macclesfield
- Meir and Longton
- Middlewich and Winsford
- Oswestry and Ellesmere
- Penkridge and Stafford
- Port Sunlight
- Ruthin
- Sandbach
- Staffordshire and Newcastle-under-Lyme
- Stockport
- Telford, Newport and Market Drayton
- Upton
- Uttoxeter
- Warrington

**Getting to
Reaseheath
is FREE on all
college bus
routes***



CHOOSING THE RIGHT COURSE FOR YOU

Our courses have more of a practical side to them than courses in sixth forms and some other colleges. If you have an interest in subjects such as Biology, Physics or Maths why not explore this with one of our courses like Animal Management, Agriculture, Horticulture, Sport or Engineering?

Career focused courses

In addition to the practical experience you will gain whilst studying at college, our diplomas include a relevant work placement. This will give you that much needed work experience to get you started in your first job.

Our tutors are industry experts with extensive experience in their field. We have excellent links with employers meaning that you'll leave college with the skills and knowledge industry wants and needs.

You can study a subject you have a real interest in, as well as gain real-life experience whilst working in our industry standard facilities – over recent years we've invested £80 million into state-of-the-art equipment and facilities.

Preparation for further study

If you are hoping to progress onto further study, our range of Level 3 Diplomas offer a great alternative to A Levels and will give you the UCAS points and study skills needed if your goal is to progress on to university.



How we differ from sixth form

Our vocational programmes are academic and practical, often offer opportunities for additional qualifications and study tours and will prepare you for employment or further study. You will be studying alongside students with similar interests in a friendly, relaxed and supportive environment.

Your study programme is only one aspect of the Reaseheath Experience. Reaseheath boasts a beautiful, unique campus with extensive facilities giving you the opportunity to participate in a range of varied and exciting social and recreational activities. Some of our students even choose to live on-site in one of our halls of residence.

Katie Gibson

Level 2 and 3 Diplomas in Bakery and Pâtisserie, Foundation Degree in Rural Events Management

"Reaseheath feels like a family, everyone is so supportive and friendly. I wanted to come to college to develop my independence so the option to live on-site and the student life really excited me. The courses appealed to me as they are very practical and had many extra opportunities to get me ready for employment."



Our aim is for students to progress from Reaseheath not only work or university ready, but as confident individuals ready for life

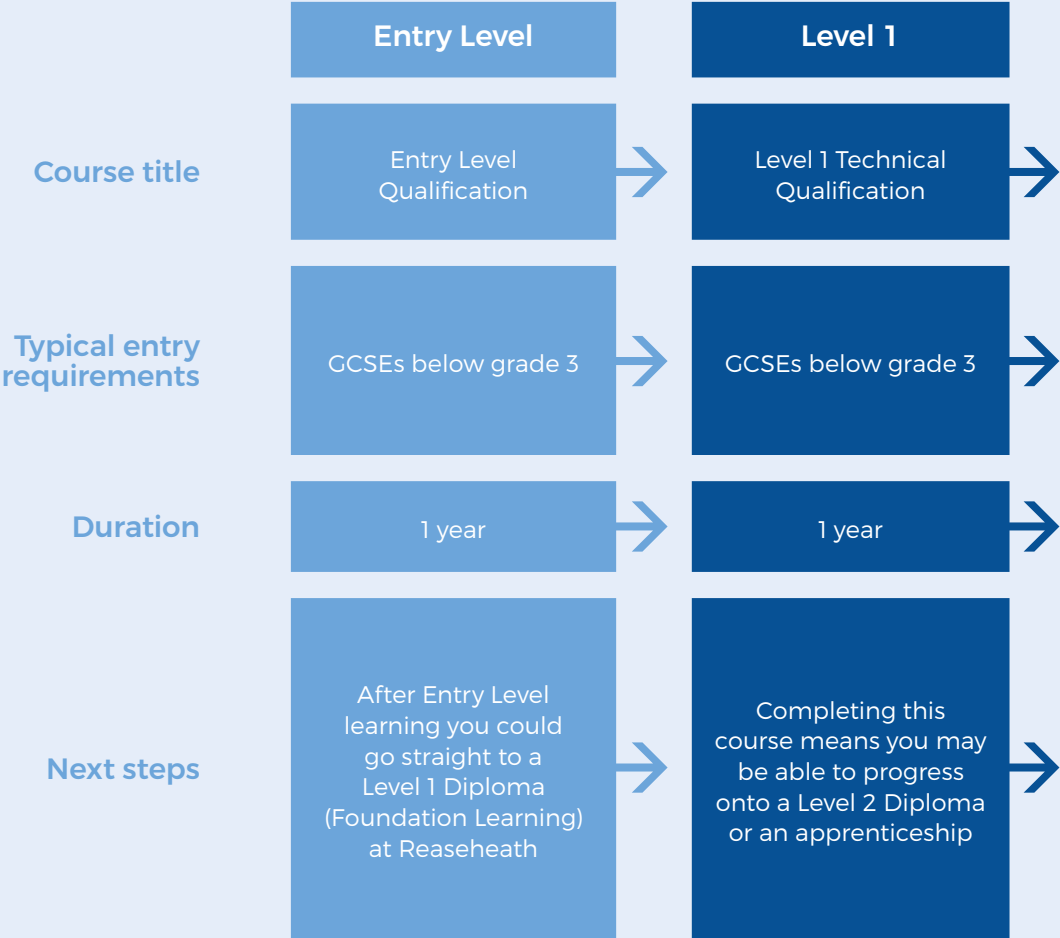


Which level course is for me?

We offer a number of routes within each level to suit individual needs. You can apply for the course level based on your GCSEs or equivalent qualifications. You can find out more about our courses at Course Open Events and Taster Days.

Full time courses run at different levels (Entry Level – Tech Bacc) dependent on your previous qualifications and experience. We also offer apprenticeship programmes at Levels 2 and 3. These programmes are ideal for those who wish to gain new qualifications whilst working, see page 28 for further details.

All applications are assessed on an individual basis. When you visit the college or attend your interview, we will make sure that the level of course you are applying for is the right one for you and for your chosen career path



The above chart is aimed toward 16+ school leavers however equivalent qualifications also apply.

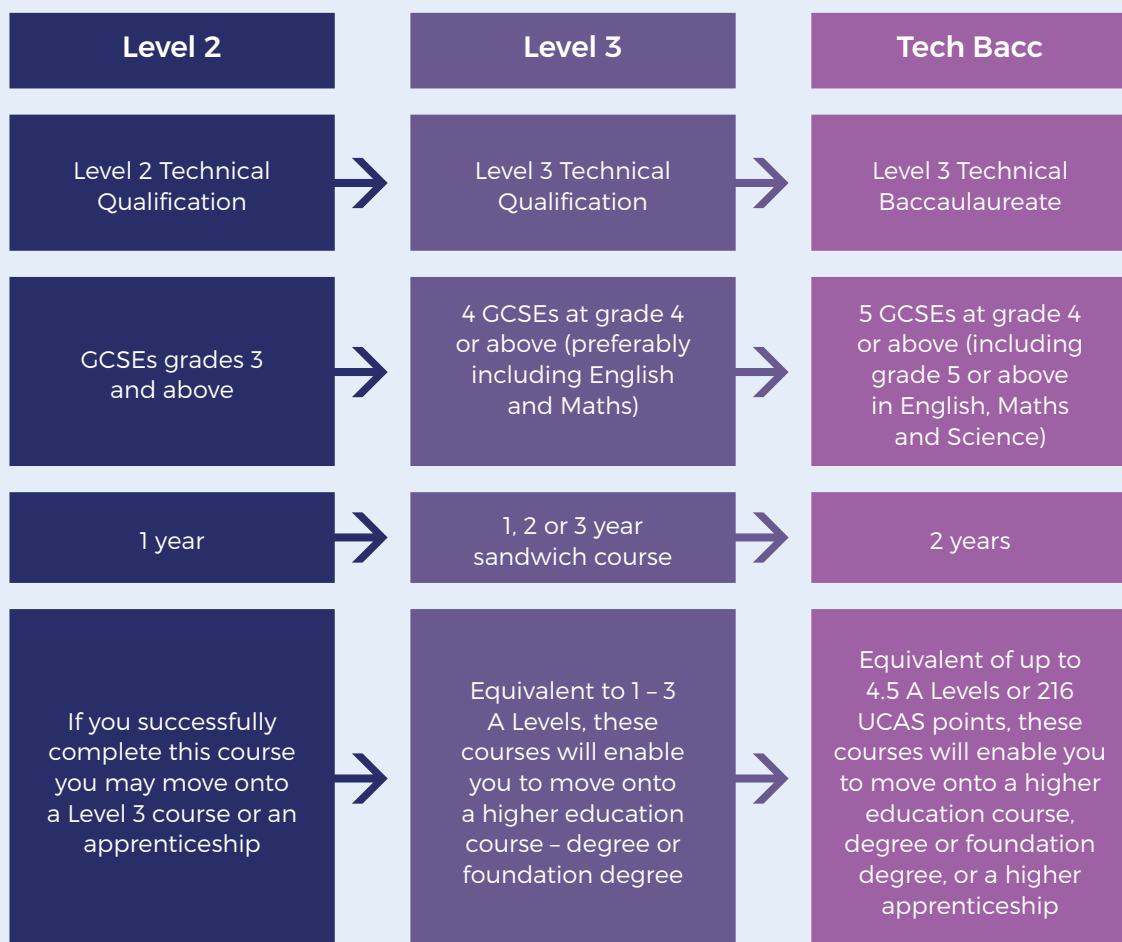
Level 3 programmes explained

Each year we look at our courses and make sure they are providing all our students with the skills that industry and universities want.

We offer a range of courses including Technical Baccalaureates, Advanced Technical Extended Diplomas, Diplomas and Certificates at Level 3.

These courses are accredited by City and Guilds, BTEC, Construction Industry Training Board (CITB) and The Institute of the Motor Industry (IMI). Each course is equivalent to A Levels and provides you with UCAS points for progression onto our degree programmes or other university entry.

Whether you know what career you'd like to progress into or if you're still exploring your options, read on to discover the range of subjects and careers available.



Please note entry requirements can vary depending on the course you choose. For full course information, including the specific GCSE subjects you require for your course, visit our website.

BE READY PASSPORT

1 Getting started on your Reaseheath Experience

Before you join Reaseheath we want to make sure you can find out about all the opportunities we offer and help you choose the right course for you.

You'll find lots of information about our range courses, as well as the careers you could progress onto, in this prospectus and on our website.

You can also get a flavour of life on campus by coming along to one of our Course Open Events or Taster Days. These events are the perfect opportunity for you to come and see the campus and gain impartial information, advice and guidance from our staff.

Once you've decided we're the right college for you, it's time to apply and enrol.

2 Welcome to Reaseheath

Once you've enrolled, it'll soon be time to start your first term. Our Freshers Crew will be on-hand to help you get to know the college, meet new friends and settle in to the campus.

You'll meet your tutors and other staff during your full induction programme, as well as visit the Freshers Fair, explore our facilities and learn everything you need to know about health and safety.

3 Your study programme

Whatever subject area or level of course you choose, your study programme will give you the edge when it comes to progressing successfully into your career of choice.

Your study programme is designed to offer a challenging and exciting learning journey that not only gives you the knowledge needed to succeed in your chosen area of study but also wider technical, academic, personal and employability skills.

Your study programme is made up of all of the following areas...

BeReady: Your passport to a great career

Once you complete these 12 steps, you will be awarded your BeReady Passport and will have successfully achieved your qualification and completed your Reaseheath Experience. You will then be ready to progress straight into employment or on to further study in your chosen field

4 Core qualification

Your core qualification is a substantial qualification at Level 1, 2 or 3 relevant to your chosen area of study and entry grades. These technical qualifications contain a mix of theoretical and practical learning, see our course pages for more information.

You will benefit from:

- High quality teaching, learning and assessment
- E-learning and digital technologies
- A student-centred course
- Individualised learning
- Stretch and challenge helping you achieve your full potential

5 Maths and English

Employers frequently stress the importance of achieving a good level of understanding in maths and English. It is essential for the world of work and skills which are used on a daily basis.

At Reaseheath we are committed to enabling you to develop your language, literacy and numeracy skills, with the ultimate aim that you maximise your success and achievement within the workplace.

6 BeReady tutorial programme

BeReady is a unique tutorial programme designed by staff and students to develop your skills and prepare you for a successful career and life in today's society.

BeReady tutorial topics include social, moral and cultural awareness, staying safe, employability skills, study skills, being healthy, understanding modern society and its values and good citizenship.

BE READY PASSPORT

7 BeEmployable: Skills for employment

Our BeEmployable programme is in place to support you with your career choices. Working alongside employer mentors, we'll help prepare you for the world of work by developing the right skills for employment:

- Leadership and creativity
- Planning and organising
- Initiative and motivation
- Communication skills and confidence
- Time management
- Team work
- Resilience

8 BeEmployable: Work placement preparation

As part of your study programme you will be supported in finding an industry relevant work placement (up to 100 hours) by our dedicated BeEmployable team.

Your placement provides the opportunity to gain valuable employability skills and experience in the workplace – all great for your CV!

Typically you'll spend 2-3 weeks working in an industry relevant to your course and interest. Whilst on placement you'll be assigned an employer mentor who will make regular contact with you, offering advice and guidance in both course and industry related matters.

9 BeEmployable: Careers advice and job shop

Our qualified careers advisors will be on-hand during your time at college to provide impartial careers guidance and information and advice on your next steps.

You'll also benefit from CV workshops, guidance with UCAS applications and a dedicated vacancy job shop.

You may also have the opportunity to gain industry recognised short qualifications alongside your course. These are often required by employers and may help to increase the chances of employment in the future as they demonstrate industry competency and skill acquisition

10 BeActive

When you join Reaseheath College you'll become part of the Reaseheath student body giving you access to the many varied and exciting social and recreational opportunities throughout the year.

From sports to study tours, charity fundraising to volunteering opportunities, there's something for everyone!

See page 12 for further information.

11 Student and college life

All students will have a personal tutor who will provide 1:1 guidance and support throughout the year. The goal of your tutor is to help maximise your level of achievement and to help ensure positive progression to further study or employment.

As well as your tutor, you'll have access to outstanding student support from a range of departments across the college, including learning support, student services, wellbeing and counselling, student finance and student transport.

12 Preparation for progression

On completing your BeReady Passport and Reaseheath Experience, you'll be ready for your next steps, whether that's starting employment or progressing onto degree level study at University Centre Reaseheath or another institution.

At the end of the academic year, you will be invited to attend our Presentation of Awards ceremony to celebrate your achievements and hard work with your friends and family.

Whatever your next steps we hope you will continue to be part of our Reaseheath family by becoming a member of our Alumni Association.

For more information about your next steps after college see page 30.

APPRENTICESHIPS

Apprenticeships are an excellent way to gain a nationally recognised industry qualification and valuable workplace skills, all whilst earning a wage!

Training you in the skills employers want, apprenticeships give you choices in your career. Following your apprenticeship you could continue working for your employer or go on to a higher, degree level apprenticeship.

Why choose an apprenticeship?

- Earn a wage with paid holidays
- Gain a recognised industry qualification or a degree without incurring any fees
- Receive on-the-job training working alongside experienced staff
- Learn job specific skills
- Enhance career progression within your industry

Apprenticeships are designed to allow you to earn while you learn with most of your time spent at your workplace and usually one day per week at Reaseheath or, if you're on a national programme, you will attend college on block release. You will be paid for attending college by your employer.

There are various types and levels of apprenticeships from Level 2 (intermediate) through to Level 5 (degree). Before your apprenticeship starts we will invite you for an interview and initial assessment here at the college to confirm eligibility and suitability.

The college have a dedicated team who are on-hand to support you with finding suitable employment.

There are a number of completely new apprenticeship standards and frameworks designed by employers which are delivered by the college.

Apprenticeships we offer

- Animal Care
- Bakery
- Brick Layer
- Butchery
- Carpentry and Joinery
- Construction Plant Maintenance
- Crop Technician (Horticulture and Agriculture)
- Equine Groom
- Food Process Operative
- Food Technologist
- Greenkeeper
- Horticultural and Landscape Operative
- Land-Based Service Engineering Technician
- Plastering
- Rail Engineering Technician
- Stockperson
- Sports Turf Operative
- Vehicle Parts (Agricultural or HGV)
- Veterinary Nursing

Visit reaseheath.ac.uk/vacancies to view our latest apprenticeship vacancies and apply

Apprenticeships

If you are aged 16 and over and working 30 hours or more a week you can begin an apprenticeship at Reaseheath.

On starting your apprenticeship you will be invited to Reaseheath for an induction and allocated a Work-Based Assessor who will support and guide you throughout.

Reaseheath apprentices may also access college transport or accommodation, depending on whether you will be attending college on day or block release.

If you are aged over 19 at the start of your apprenticeship your employer may be expected to make a contribution towards the cost of training.

For more information please contact the Apprenticeships Team on **01270 613221** or email **apprenticeships@reaseheath.ac.uk**

Training you
in the skills
employers want,
apprenticeships
give you choices
in your career



YOUR NEXT STEPS AFTER COLLEGE

BeReady Passport

During your time at college you will complete your BeReady Passport, see page 24. This passport will prepare you for your next steps, whether that's progressing onto a degree programme at University Centre Reaseheath or another institution, or into employment.

During your studies, you will be given opportunities to attend careers events to help you decide on your next steps.

University Centre Reaseheath

Many of our students choose to stay at Reaseheath and study for a degree. We have a wide choice of degree courses so you can choose one that's right for you. You can study either full time or part time. Part time routes can be flexible, allowing you to study at the same time as having a job.

Find out more about our degree courses
ucreaseheath.ac.uk



Quality degrees

University Centre Reaseheath fully meets national higher education requirements for quality and standards.

This means that:

- Qualification standards are reliable and reasonably comparable to those across the UK
- The student academic experience is of high quality
- Student outcomes are excellent and the provider has demonstrated continuous improvement in relation to them

Annual Provider Review 2017

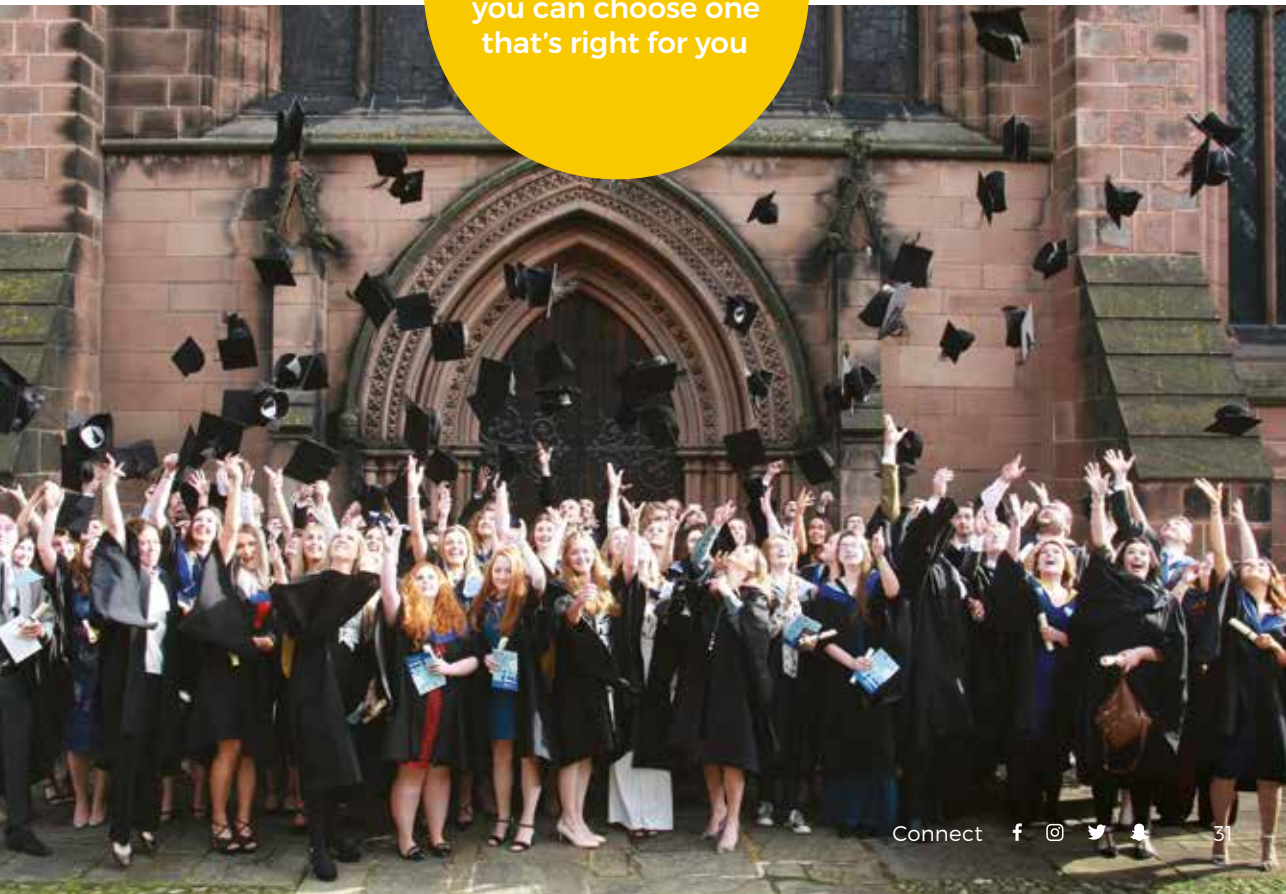
Reaseheath Alumni Association

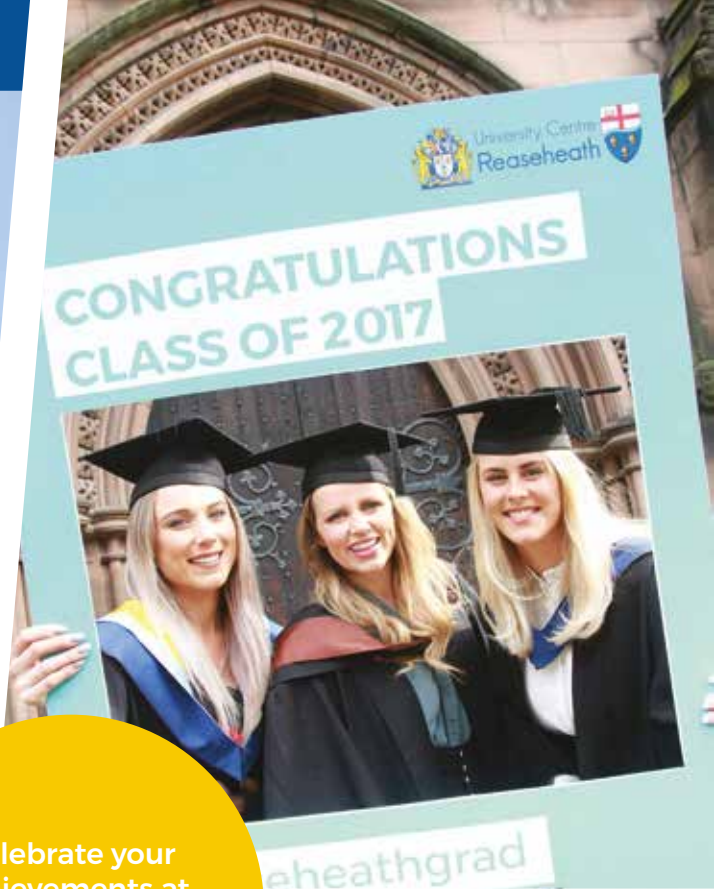
After you complete your studies we hope you will remain part of the Reaseheath family and continue your Reaseheath Experience by becoming a member of our Alumni Association. This gives you access to a range of services and events, including opportunities to help expand your skills and develop your CV.

We'll be in touch closer to the time, but in the meantime take a look at reaseheath.ac.uk/alumni for more information.



We have a
wide choice of
degree courses so
you can choose one
that's right for you





Celebrate your achievements at our Presentation of Awards ceremony



Where will your degree take you?

Rob Yardley

Foundation Degree in Agriculture

Current job: Farm manager, Velcourt Ltd

"During my part time degree I seized every opportunity on offer. I was awarded several scholarships and travelled the globe.

"Reaseheath offers superb facilities and my degree gave me the transferable skills needed to fast-track my career. Balancing study and a career is hard work, but if you're determined to succeed it's well worth the effort.

Ask yourself where you want to be in 10 years – that will give you the impetus to achieve your goals."



Louise Swindells

BSc (Hons) Equine Science

Current job: Science teacher

"I really liked the friendly atmosphere at University Centre Reaseheath. The groups are small and the lecturers are very approachable and supportive. I feel my degree course developed me as a person as well as extending my academic skills.

"My lecturers encouraged me to enter the British Equestrian Trade Association's 'Thesis of the Year' – and I won! Since then I've continued into an academic career in a secondary school, although I may go into research in the future."



Access to Higher Education

Created for over 19s who have not yet studied at university, the Access to Higher Education Diploma is equivalent to three A Levels and will prepare you to study at degree level at Reaseheath or elsewhere.

Designed to enable you to re-adjust to the learning environment, most teaching is carried out through student friendly lessons, assignments and practical activities. A dedicated support tutor is available to help you progress through your studies so you don't need to worry – even if you have been out of education for some time.

Flexibility is the key to this one year course, which runs over three days a week between 10am – 3pm to fit in with work or family commitments.

If you have ambition to go on to a higher level course and a keen motivation to learn visit ucreaseheath.ac.uk/access for more information

OUR COURSES

ANIMAL, EQUINE AND VETERINARY NURSING ACADEMY

ANIMAL MANAGEMENT	36
EQUINE	42
VETERINARY NURSING	48

LAND AND SUSTAINABLE ENVIRONMENT ACADEMY

AGRICULTURE	54
AQUATIC ECOSYSTEMS AND FISHERIES MANAGEMENT	60
ENVIRONMENTAL CONSERVATION	66
FLORISTRY	72
FORESTRY AND ARBORICULTURE	78
GAME MANAGEMENT	84
HORTICULTURE	90

HEALTH, SPORTS SCIENCE AND PERFORMANCE ACADEMY

ADVENTURE SPORTS	96
PERSONAL TRAINING	102
PUBLIC SERVICES	108
SPORT	114

At Reaseheath College we offer an exciting range of career focused technical courses which are designed to give you the skills needed to successfully enter employment in your industry of choice

RURAL BUSINESS AND NATIONAL FOOD ACADEMY

BAKERY, PÂTISSERIE AND CONFECTIONERY	120
BUSINESS AND EVENTS MANAGEMENT	126
FOOD TECHNOLOGY	132
RURAL BUSINESS PATHWAYS	35

ENGINEERING, TECHNOLOGY AND CONSTRUCTION ACADEMY

AGRICULTURAL ENGINEERING	138
CONSTRUCTION	144
ENGINEERING APPRENTICESHIPS	150
MOTOR VEHICLE	156

FOUNDATION LEARNING AND LIFE SKILLS ACADEMY

ENTRY AND FOUNDATION LEARNING	162
-------------------------------	-----

Rural Business Pathways

Are you a budding entrepreneur? Ever thought of gaining additional skills in bite size chunks to further your ambitions and put creativity into action?

Then the new Rural Business Pathways may just be for you.

Study core modules in business enterprise and develop your social media and digital skills, whilst specialising in food, floristry, butchery, dog grooming or horticulture.

This new course is aimed at those aged 19+. Adult Learner Loans may be able to support some training, see page 15.

NEW!

ANIMAL, EQUINE AND VETERINARY NURSING ACADEMY

ANIMAL MANAGEMENT

FACILITIES

Purpose built animal centre with licensed teaching zoo and laboratories – facilities which are among the best in the UK

Crazy about animals? Take a walk on the wild side at our animal centre and zoo!

If you enjoy biological sciences and have a connection with animals, our Animal Management Centre is the place for you!

You'll be based at our fantastic purpose built animal centre with its licensed teaching zoo and laboratories – facilities which are among the best in the UK. Even more exciting, you'll have the chance to work with over 150 species including tapir, meerkats, lemurs, otters, birds of prey, reptiles, fish, amphibians and a range of companion and park animals.

Your classroom lectures will come to life as you carry out practical sessions with the animals in our collection, and you'll have the opportunity to visit some of the UK's leading zoos and wildlife parks and to join our amazing study tours abroad.

Our courses offer a great progression route into degree level study and, depending on your GCSE results, you may have the option to study a science pathway opening opportunities to study degrees in areas including veterinary medicine or animal science.

Whatever your interests, you'll be encouraged to gain as many experiences as possible and to explore the many exciting and varied careers on offer.

↓ At a glance

Foundation Level 1 in Animal Care

Level 2 Technical Certificate in Animal Care

Level 3 Advanced Technical Extended Diploma in Animal Management

Technical Baccalaureate in Animal Management

Animal Care Apprenticeships

WHY STUDY ANIMAL MANAGEMENT AT REASEHEATH?

Receive great teaching and support from our tutors and keepers, who have a wealth of knowledge, industry experience and contacts

Gain great career tips and contacts from inspirational speakers and former students

Make the most of opportunities for research and work experience, thanks to our links within the industry

Join student clubs and societies and make a difference on campus and out in the community through fundraising and conservation projects

Work hands-on with our collection of over 1,000 mammals, amphibians, reptiles, birds and fish or with dogs in our fast growing canine department

Enjoy amazing field programmes to wildlife hotspots such as Africa and South America and behind-the-scenes visits to leading animal collections and zoos in Europe

Where could your career take you?

The animal management sector offers an incredibly broad spectrum of jobs but all aim to make a difference to the health and wellbeing of pets, working animals, livestock and wildlife. Job satisfaction is virtually guaranteed!

You could work for an animal charity, international welfare organisation, scientific organisation, zoo, animal visitor attraction, sanctuary, veterinary practice or for one of the numerous animal-related businesses in this country or abroad. With the correct qualifications you could also set up and run your own business.

DID YOU KNOW?

The animal care industry is worth £1 billion to the UK economy. It has 13,000 businesses, 78,000 employees and a huge number of volunteers



Here are a range of career suggestions:

- Zoologist
- Biologist
- Marine biologist
- Research scientist
- Science writer
- Veterinary surgeon
- Veterinary nurse
- Veterinary technician
- Veterinary receptionist
- Conservationist
- Animal behaviourist
- Animal nutritionist
- Animal hydrotherapist
- Zoo keeper
- Wildlife park keeper
- Enclosure designer
- Performing animal trainer
- Therapy dog trainer
- Security / police dog trainer
- Dog groomer
- Dog breeder
- Dog walker / sitter
- Rehabilitation centre manager
- Welfare officer
- Kennel or cattery manager
- Public educator
- Lecturer or instructor
- Pet shop manager
- Aquarium keeper

Typical salaries: head of university department £46,000, rehoming centre manager £35,000, dog grooming salon manager £25,000

Former student profile

Jack Williams

Current job role: Centre Manager,
Lakeland Wildlife Oasis

Previous course: BSc (Hons) Zoo Management
at University Centre Reaseheath

"I've been addicted to all things furry and scaly since I was young. I worked part time at the zoo I now manage throughout my degree as well as volunteering at Reaseheath's Zoo, and I was very active in the student societies.

"Becoming manager at Lakeland so soon after graduating was a dream come true, particularly as an endangered snow leopard cub was born the same week!

"I couldn't have been happier with my academic experience. Reaseheath's staff are by far the college's biggest asset. The lecturers and keepers are a powerhouse of knowledge and provided me with so many opportunities to boost my career."



DID YOU KNOW?
47% of the UK's
population has a pet.
There are 24 million
pets in the UK!

Your Reaseheath Experience

Animal management is Reaseheath's most popular department by far, with over 800 students from Key Stage 4 learners to undergraduates. But as everyone has a common interest in animals you're sure to fit in well and quickly make friends.

Our animal management students love to party, so you'll be quickly introduced to our campus social and sporting calendar, and you'll be encouraged to get involved with environmental projects in the community and to join fundraising events.

Once you've settled in you could be offered the chance to join one of our amazing field trips to Africa or South America, or on study tours to the best zoos, educational establishments and museums in Europe. Some students tell us these trips have been life-changing!

Student profile

Sarah Higginson

**Level 3 Advanced Technical Extended
Diploma in Animal Management**

Next step: BSc (Hons) Wildlife Ecology and
Conservation at University Centre Reaseheath

Ambition: Wildlife ecologist

"I tried several careers but then realised that I wanted to work with animals. I came to Reaseheath because I wanted to find my true passion and where I'm going in life.

"During my course I've learned the husbandry of a wide range of animals and birds. Thanks to those skills I was offered a job as a keeper at Peak Wildlife Park, which I do alongside my college work.

"As my studies became more scientific I did a specialist project surveying birds round Reaseheath's lake. That's when I really found my passion. I'm determined to become a wildlife ecologist and my next step is to study for a BSc Wildlife Ecology and Conservation degree at University Centre Reaseheath."





DID YOU KNOW?

More people than ever are choosing to visit zoos, wildlife parks and other animal based visitor attractions as part of their UK based holiday



Industry links

Thanks to our wide industry links we run an outstanding programme of inspirational speakers and seminars and behind the scenes visits to some of the country's leading zoos and wildlife parks such as Chester Zoo and Edinburgh Zoo. We've had lectures from such well known people as influential conservationist Ian Redmond OBE. Our industry partners also have input into our courses, ensuring that you have the practical skills and knowledge that employers are looking for.

All of our level 3 students complete a relevant extended work placement, working across a huge range of organisations from within the animal management sector.

Where you'll be studying

You'll be based in our Animal Centre with its licensed zoo, outdoor and indoor enclosures and dedicated birds of prey, reptile, amphibian, fish and companion animal sections. We also have a dog grooming parlour, kennels and a dog training field – and an on-site vet to ensure every member of the collection is in good health.

Your classroom theory will come alive when you work with some of our many species and you'll add to your practical skills during your work placement. You can join student clubs such as 'Student Voice', where members work on practical projects within the zoo, or you could volunteer to engage with the thousands of visitors who come to our zoo each year.

You can enjoy your breaks sitting in the sunshine by our lake, or you can take advantage of our well stocked library, quiet study areas and computer rooms for extra reading and study.

University study

Many of our animal management students choose to study their degree at University Centre Reaseheath. With degrees in animal behaviour and welfare, wildlife conservation and ecology, canine behaviour and training and zoo management, there's plenty of choice!

Our courses

As this is a highly competitive jobs market, it's essential that you have recognised qualifications plus practical skills in animal handling and husbandry. Our courses deliver both theory and practical training and you'll be encouraged to explore topics which interest you or compliment your studies.

As a diploma student you'll start developing your scientific research skills – ideal if you are thinking of progressing onto a degree in science, biology or zoology.

Foundation Level 1 in Animal Care

A great introduction to the animal care industry

Level 2 Technical Certificate in Animal Care

Gain a good grounding and prepare for work or further learning

Level 3 Advanced Technical Extended Diploma in Animal Management

The equivalent of 3 A Levels, this course gives you the skills and knowledge for a wide number of jobs or to progress onto a degree



Depending on your GCSE Science grades, you could choose to study a science pathway in your second year

Technical Baccalaureate in Animal Management

For high achievers and worth 4.5 A Levels, you'll study a range of science-based topics along with Level 3 maths and an industry project

Animal Care Apprenticeships

Earn and learn at your workplace, guided by your employer and your college assessor

Discover our courses:

 reaseheath.ac.uk/animal-management

ANIMAL, EQUINE AND VETERINARY NURSING ACADEMY

EQUINE

INDUSTRY STANDARD FACILITIES

Our equestrian centre has all the facilities you would expect from a professional yard

Turn your passion for horses into a successful career.

If you're passionate about horses but you're unsure how they can be part of your future, our range of courses provide a broad insight into the wider equine industry.

You'll be based at our Equestrian Centre, which has all the facilities you would expect from a professional yard. Our team of expert staff – many with elite international experience – will provide training in all aspects of the modern-day horse industry.

As well as learning about horse management, you can choose to focus on equine science, rehabilitation, business management, rural events management or equitation.

You don't even have to ride if you don't want to. You can concentrate on equine business or event management or join our weekly progressive riding lessons with a qualified instructor to develop your riding ability at your own pace.

↓ At a glance

Level 1 Certificate in Equine Skills

Level 2 Technical Certificate in Horse Care

Level 3 Advanced Technical Extended Diploma in Equine Management

Technical Baccalaureate in Equine Management

Level 2 Equine Groom Apprenticeship

Level 3 Senior Equine Groom Apprenticeship

WHY STUDY EQUINE AT REASEHEATH?

Broaden your career choices through work placements and study tours in the UK and Ireland

Improve your employability by training for extra qualifications such as British Horse Society exams

Gain top tips from lectures and demonstrations from world-renowned dressage riders, showjumpers, event riders and equine behaviourists

Become part of our arena party at world-class events such as the Horse of the Year Show, Bolesworth International Horse Show and the Royal Windsor Horse Show

Join a booming industry – there are over 19,000 equine businesses in the UK employing 41,200 people and consumers spend over £4 billion on equestrianism every year

Join a winning team! Last year our equine team were crowned the 2017/18 North West Equine Inter-College Champions!

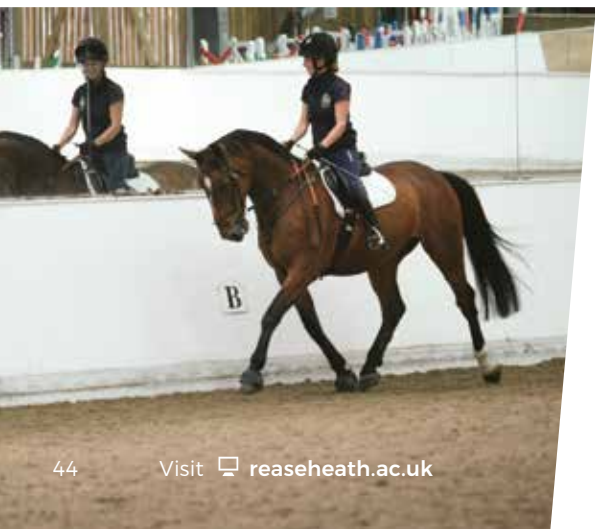
Where could your course take you?

Careers in the equestrian industry are varied and rewarding. You could choose to work hands-on with horses as a competition groom or trainer, or go down the science and research route perhaps working as a bloodstock agent or veterinary nurse!

Some of the careers our students have gone on to do include:

- Elite competition grooming
- Professional rider
- Yard manager
- Equine nutritionist
- Equine physiotherapists
- Equine veterinary nurse
- Racehorse trainer
- Lecturer or instructor in equine
- Equine product designer and manufacturer
- Researcher
- Bloodstock agent
- Welfare officer
- Event or business manager

An experienced equine and animal nutritionist can earn between £35,000–£50,000 a year



Former student profile

Tyler Simpson

Current job role: Employed on the Reaseheath Equestrian Centre yard

Previous courses: BSc (Hons) Equine Science and Sports Performance, Level 3 Extended Diploma in Horse Management

“Studying at Reaseheath gave me the practical skills and theoretical knowledge to run my own yard along with recognised industry qualifications. Further Education study allowed me to develop the foundations and enabled me to specialise on my degree course when I analysed sports performance in both horses and riders.”



Student profile

Suzannah Offley

Level 3 Extended Diploma in Equine Management

School: Birkenhead High School Academy

Ambition: Dressage rider and trainer

“I started dressage when I was 13 and compete in affiliated classes at preliminary and novice level with my Fell pony, Mischief. This year we were Prelim champions at the North West Regional Dressage Championships and qualified for the British Dressage National Championships, which was really exciting. I’ve also represented Reaseheath on student teams.

“Reaseheath has a friendly atmosphere and you learn all the skills you’ll need for industry. The ridden lessons are interesting because they give you the chance to ride a variety of different horses. We also have fun going to events and visiting different professional yards.”



Your Reaseheath Experience

You'll have a lot of fun on our courses! Our students enjoy an annual study tour to Ireland which includes a visit to the National Stud of Ireland, regular visits to equestrian businesses and organisations and the chance to join arena parties at key national events such as Horse of the Year Show (HOYS) and Bolesworth International.

You can pick up top tips from international stars like behaviourists Monty Roberts and Richard Maxwell, dressage riders Michael Eilberg and Gareth Hughes, show jumpers Ben Maher and Geoff Billington, event riders Paul Tapner and Lucinda Fredericks, and Olympic course designer Bob Ellis, when they visit our equestrian centre!

Industry ready

We have great industry links and our equine courses are endorsed by industry professionals through our industry mentor scheme. You will benefit from our partnerships with Stallion AI Services, Tyler Cassells Equine, Ruth Kennerley Human and Equine Sports Therapy and many more. Their input will help give you a head-start in your chosen career.

You will also undertake a relevant work placement as part of your course giving you invaluable industry experience. Many of our students impress their employers so much that they are offered full time employment following the completion of their course!

You will have the option to study for extra qualifications such as British Horse Society (BHS) exams and the Young Equestrian Leaders Awards – designed to make your CV stand out.

Industry view

Emily Watts

Emily Watts Equestrian, UKCC Level 2 Coach, Reaseheath Industry Mentor

"As a local business, I've had Reaseheath students on work placement with me and I've been impressed by the level of knowledge they've shown. The hands-on experience gained while studying helps to prepare learners for a variety of careers in the equine industry."

Lucy Lunt-Bell

Level 3 Extended Diploma in Horse Management

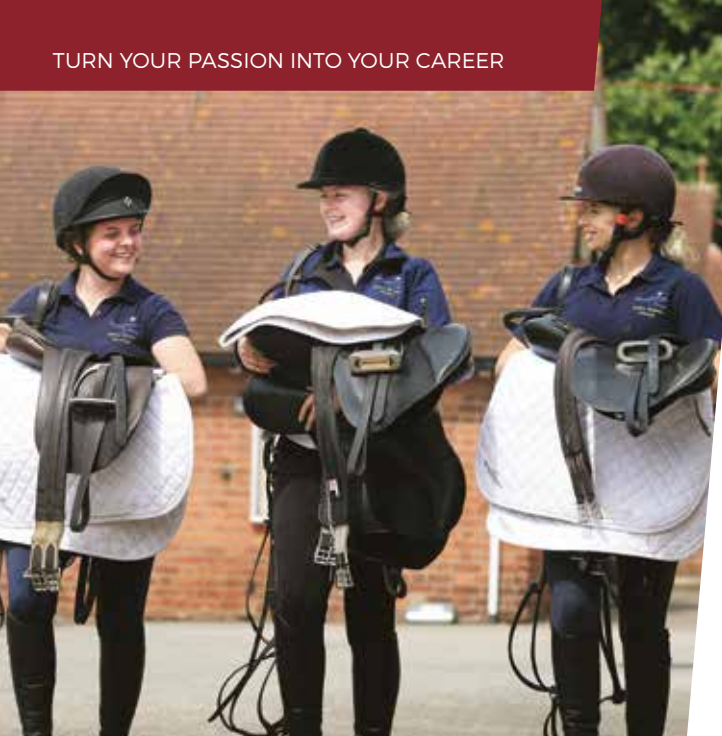
"I've received a lot of guidance from the lecturers and equine staff at Reaseheath and been offered some unique opportunities to gain experience due to their industry contacts. With their help, I landed an exciting summer job working for 4-star event riders Hannah Bate and Paul Sims."



Livery options

You have the opportunity to bring your horse with you while you study! We have a range of livery packages available from full working livery to DIY livery. You and your horse will have access to our excellent range of facilities, on-site competitions and training opportunities with resident coaches and visiting professionals.





Where you'll be studying

Reaseheath Equestrian Centre boasts excellent facilities and resources to help you develop your technical understanding and practical expertise. These include:

- Modern indoor arena plus two outdoor arenas, all with competition surfaces
- Carefully designed modern yards, including American barn-style stabling, which accommodates over 60 horses
- Flicka, our mechanical horse
- A range of showjumping fences and dressage boards
- A covered 8-horse Claydon horse walker
- Secure tack rooms and rug drying facilities
- A Kylix Lambda Pro Solarium
- Tru-Test Electronic Weighbridge
- An Equissage massage machine
- Gait analysis systems

We have a range of breeds at our Equestrian Centre including Warmbloods, Irish Draughts and Cobs to name a few. We also have a partnership with The British Thoroughbred Retraining Centre and we have several of their horses on long-term loan. You'll get to work with all these breeds, both riding and handling them in stable management sessions.

Earn while you learn

As an apprentice, you'll be able to work and earn a wage while building your knowledge and skills. All your training will be delivered in the workplace with the support of an industry expert assessor.

A particularly diverse industry, you could find yourself working in a role such as stable hand, groom or stud assistant. Some of the companies our apprentices have worked at include Juwel Equestrian, Denstone Stud, Bazaars Stud and more...

Our courses

We offer a range of courses and apprenticeships to prepare students for a rewarding career or to enter degree level study. Our diplomas are focused on employability with all students completing a relevant work placement helping to give you that all important head-start in your chosen career.

Level 1 Certificate in Equine Skills

A great stepping stone for people who are keen to work with horses but don't have any previous experience

Level 2 Technical Certificate in Horse Care

This one year course is designed to introduce you to the many career options available within the equestrian industry

Level 3 Advanced Technical Extended Diploma in Equine Management

Equivalent to 3 A Levels, this course gives you a great balance between practical and theoretical study and provides the UCAS points needed for university


Technical Baccalaureate in Equine Management

For high achievers and worth the equivalent of 4.5 A Levels, this advanced qualification includes Level 3 maths plus an industry project

Level 2 and Level 3 Equine Groom Apprenticeships

Earn while you learn by working as an equine apprentice


Discover our courses:

 reaseheath.ac.uk/equine

Our outreach centres

Thanks to successful partnerships with Burrow's Lane Farm Educational Equestrian Centre in Merseyside and Croft End Equestrian Centre in Lancashire, we can now offer some of our equine students the chance to study closer to home. Visit our website for more information about the courses offered at Croft End and Burrow's Lane.

Find out more:

 reaseheath.ac.uk/outreach

ANIMAL, EQUINE AND VETERINARY NURSING ACADEMY

VETERINARY NURSING

INDUSTRY LED

Industry trained staff work
in partnership with over
70 training practices

If you love animals and are passionate about improving their health and welfare, it's well worth considering a career in veterinary nursing.

As a highly skilled professional, you'll work alongside veterinary surgeons to deliver medical care to animals. You'll be involved in the care of a wide range of patients and help to inform and support their owners. It's a profession which is practical, challenging and hugely rewarding.

We set up our specialist Centre of Veterinary Nursing at Reaseheath five years ago and it has gone from strength to strength. Our industry trained staff work in partnership with over 70 training practices within a 50 mile radius of our campus and we record a very high level of academic success.

We currently have 120 students all of whom are employed or carrying out work placements at veterinary practices, depending on the level of their course. During their time at college they learn vital clinical and employability skills to take back into their practice. Students on our Veterinary Care Assistants course can also improve their GCSE grades in maths and English if necessary.

At a glance

Level 2 Diploma for Veterinary Care Assistants

Level 3 Diploma in Veterinary Nursing

WHY STUDY VETERINARY NURSING AT REASEHEATH?

Gain recognised qualifications which will help you progress your career

Chance to get hands-on with a wide range of exotic species in our licensed zoo collection

You'll experience a varied learning environment – as well as learning in the classroom, you'll enjoy practical sessions and benefit from online study

Learn from experienced lecturers who have a background in veterinary medicine and science

Meet and learn from peers employed in a wide range of practices

You'll have a dedicated work placement officer who will be on hand to support you throughout your course

Where could your career take you?

Veterinary nursing offers an excellent professional pathway into management or further specialisation. The opportunities are varied and exciting, particularly if you enjoy biology and other sciences.

You could join a practice which delivers routine or emergency healthcare, a referral practice specialising in orthopaedics, oncology or ophthalmology or even work in a multi-million pound teaching hospital at the forefront of animal science, clinical procedures and genetics.

The vet nursing qualification is so well respected that it can help you find an animal related career even if you don't go down the veterinary route.

Here are just some of the choices waiting for you:

- Veterinary nurse
- Practice manager
- Head nurse
- Nursing team leader
- Clinical coach
- Anaesthetist
- Specialist veterinary nurse
- Nursing assistant
- Animal welfare and rescue centre manager
- Animal behaviourist
- Animal rehabilitator
- Boarding kennels / catteries /
livery stables manager
- Pet store advisor
- Grooming parlour owner
- Pharmaceuticals rep
- Nutritionist
- Researcher
- Lecturer
- Member of the armed forces

The average salary for a qualified veterinary nurse is £24,500

Industry view

Craig Colbert

**Registered veterinary nurse
and practice owner**

Vets4Pets Stoke Festival Park

"I started the National Diploma in Animal Care at Reaseheath many moons ago, and then got my first job in Veterinary Nursing so I had to leave. When I first entered the veterinary world 14 years ago I never thought I would be able to become a practice partner. But fast forward to today and I am running my own surgery with a friend and we have a staff of ten plus a locum vet.

"We have had a number of Level 2 students from Reaseheath come to us for work experience and we always put our trainee nurses through the college's Level 3 programme. Currently we have two trainee nurses on the programme and a veterinary care assistant will start work experience with us shortly.

"I only have positive things to say about Reaseheath. The whole team there are very supportive. The clinical coach courses are well led and directed on a level that newcomers can understand, while also keeping existing clinical coaches up to date with curriculum changes."



DID YOU KNOW?

Around 12 million (44%) of UK households have companion animals – that's about 51 million pets!

Student profile

Caroline Lynch

Level 3 Diploma in Veterinary Nursing

Registered Veterinary Nurse, Northwich Vets

"I originally worked as long haul Cabin Crew but once I had my whippet Norman I didn't want to be away from home so much and decided on a career change. As I'm passionate about animals, veterinary nursing seemed like the perfect vocation. I did work experience between flights and loved every minute!"

"Although I was a mature student I soon settled in at Reaseheath and the lecturers were all really lovely. The course was really informative and well planned out and I loved how I could put the theory I had learned into practice during my placement."



Student profile

Katie Ford

**Level 2 Diploma for Veterinary Care Assistants;
City & Guilds Medal for Excellence 2018**

**Veterinary Care Assistant, Alsager Vet Centre
(part of The Willows Veterinary Group)**

"I thoroughly recommend the Level 2 course. It gives you a real insight into the industry and sets you up for a great career. As for vet nursing – I love learning and I get a lot of satisfaction from caring for the patients who come in with a wide variety of health issues. Pets mean a lot to people and owners are so grateful when they collect a happy, healthy pet from us."





Your Reaseheath Experience

Although you're only at college for part of the week you'll feel very much at home on our rural campus with its commercial farm, equestrian centre, licensed zoo and kennels. During your breaks you can relax by our lake, eat in one of our food outlets or pay a visit to our well stocked library and quiet study areas.

Where you'll be studying

You'll be based at our newly developed dedicated Veterinary Nursing department with specialist practical study areas and modern laboratories. Working with our industry-standard anaesthetic, radiography and theatre equipment, to name just a few, you'll gain a variety of practical skills.

You'll also have access to our Animal Centre with its licensed zoo collection of exotic, park and companion animals. We have over 1,000 animals in our zoo including a tapir, meerkats, cotton-top tamarins, Eurasian short clawed otters, birds of prey and a wide range of reptiles, amphibians and fish. We have our own vet clinic on-site and you could be invited to observe interesting clinical cases involving exotic animals.

Our popular canine department houses a new block of hospital kennels along with day boarding kennels for the dogs of staff members, some of which are used for student training.

DID YOU KNOW?

The most popular UK companion animal is the dog and the least popular is the mouse!

Our courses

To become a registered veterinary nurse you need to find a Royal College of Veterinary Surgeons approved practice which will support you through your training. Most registered training practices have a clinical coach who will help you at your workplace and you will also be visited regularly by our own veterinary nursing training practice liaison assessor.

If you are eligible to join our City & Guilds Level 2 Diploma for Veterinary Care Assistants, you will spend two or three days at college and two days on work placement at your practice.

If you are studying on our Level 3 Diploma in Veterinary Nursing (an essential qualification if you want to become a registered veterinary nurse) you will spend one full day at college and a minimum of 15 hours per week in practice. This course is regulated by the RCVS and awarded through City & Guilds.

The Level 2 Diploma is a well respected qualification in its own right and will open doors into many animal related careers, even if you don't go down the veterinary nursing route. From the Level 3 you could progress onto the RCVS Advanced Diploma in Veterinary Nursing or onto an animal related science degree, for instance in behaviour and welfare.

Level 2 Diploma for Veterinary Care Assistants

An ideal introductory course to the veterinary industry and excellent preparation for your next step

Level 3 Diploma in Veterinary Nursing

Accredited by the RCVS, you'll need this to become a registered vet nurse

Discover our courses:



reaseheath.ac.uk/vet-nursing

LAND AND SUSTAINABLE ENVIRONMENT ACADEMY

AGRICULTURE

STATE-OF-THE-ART

Our modern farm and advanced agri-technology centre offers everything you need

Could you help shape the future of farming and food production?

Farming is one of the UK's most influential industries. It responds to the increasing demand for available, accessible and affordable food, embraces innovation and, by using three quarters of our land area, shapes our natural environment.

There's never been a better time to enter the agricultural industry. There's a huge demand for well qualified, technically aware and forward thinking young professionals who can manage efficient and productive businesses, are aware of expanding UK and global markets and can work confidently with emerging technologies to reduce energy use and combat climate change.

Do you want to take up the challenge and develop an exciting career? Could you use your skills and knowledge to make a difference? Become a student in our agriculture department and we'll help your progression into this dynamic industry.

↓ At a glance

Foundation Level 1 in Agriculture

Level 2 Technical Certificate in Agriculture

Level 3 Advanced Technical Certificate in Agriculture

Level 3 Advanced Technical Extended Diploma in Agriculture

Technical Baccalaureate in Agriculture

Level 2 Stockperson (Beef, Pigs, Sheep, Dairy) Apprenticeship

Level 3 Crop Technician Apprenticeship

WHY STUDY AGRICULTURE AT REASEHEATH?

Learn about technological advances in precision farming, crop and livestock production systems and care of the environment

Study and apply the principles of Lean Management so you'll be able to deliver measurable change to improve business efficiency

Complete relevant work experience of at least 100 hours. If you're on our Level 3 Advanced Technical Extended Diploma programme you'll have a full year work placement to gain essential experience through all seasons

Enjoy unique insights and experiences by joining study tours in the UK and overseas. Visit farms and allied businesses and take part in discussion groups with industry experts

Acquire extra qualifications in key employability subjects such as health and safety, AI, foot trimming, safe use of veterinary medicine, pesticide application and (RTITB) telescopic handler operation

Gain practical skills by working with our high performance dairy herd and on our commercial sheep and pig units. You'll also help us to produce arable crops and be hands-on with our Lambing Weekends

Where could your career take you?

In the case of agriculture, it could be literally anywhere in the world! Many of our students have found their qualifications are a passport to exciting and enjoyable jobs in the USA, Australia and New Zealand. Others have gained degrees and climbed the careers ladder. Many of our diploma and tech bacc students choose to continue their studies at University Centre Reaseheath studying a foundation degree in either agriculture or dairy herd management. This industry offers an incredibly wide choice of careers, such as:

- Scientist
- Agronomist
- Land use policy advisor to the government
- Senior farm manager
- Export sales and supply chain manager
- Estate manager
- Catchment advisor
- Project manager (agricultural equipment)
- Specialist consultant
- Lecturer
- Sales and marketing manager
- Dairy herd manager
- Abattoir manager
- Produce quality manager
- Genetics specialist
- Animal health or feed specialist
- Dairy software trainer
- Breeding / growing trials technician
- Farm sales representative
- Tractor driver / sprayer / machinery operator
- Dairy herds person
- Livestock person

Typically a farm manager can earn in excess of £55,000 per annum

Former student profile

Helen Machin

Current job role: Reaseheath Programme Leader in Agriculture

Previous course: Foundation Degree in Agriculture (Dairy Herd Management) at University Centre Reaseheath

"I did my degree because I believed it would help me when I eventually took over and expanded our family business. In fact it delivered much more than that. I gained a lot of ideas and knowledge from a study tour to Wisconsin, USA, and through visits to UK farms and businesses. My coursework was very relevant and the lecturers were passionate and experienced.

"I had to prove my business knowledge by representing Reaseheath in the RABDF Dairy Crest Dairy Student of the Year competition. I must have impressed because I'm now a Programme Leader in the department!"



DID YOU KNOW?

By 2030 we will need to increase our global food production by 50% to feed a population of over 8 billion. Currently 2 billion people (28%) across the globe suffer from malnutrition or hunger

Student profile

Richard Ratcliffe

Level 3 Extended Diploma in Agriculture

School: William Brookes School, Much Wenlock

Next step: Possibly Degree in Rural Estate and Land Management or Agriculture Business

Ambition: Livestock auctioneer

"I've always wanted to work in the livestock industry but my course has opened my eyes to possibilities other than farming. I became interested in the buying and selling side of the industry when I did my year's placement at beef and sheep finishing units, and I'd now like to become an auctioneer.

"A great achievement of mine was scoring 98 out of 100 for judging a pen of butchers lambs when I was with Reaseheath's stock judging team at a national competition. I gained a lot of confidence from that and I hope to have a great career ahead."



Your Reaseheath Experience

Your college experience certainly isn't limited to the campus. This year our stock judging teams continued their run of success by coming second and third out of 22 teams in the College Challenge at the East of England Winter Stock Festival. Our students also proved they understand best environmental practice by winning the Great Farm Challenge for the second year in succession, a competition open to all land-based colleges in the north west. Likewise our students enjoyed tremendous success in the NSA Young Shepherd of the year competition.

Our level 3 students loved their study tour of the beef producing state of Nebraska, USA. They visited arable farms, saw huge herds of cattle and massive pieces of machinery. They also visited a rodeo and tried their hand at country dancing!

Note: Make sure you perfect your dance moves, ready for our summer and Christmas student balls. This department really knows how to party!





DID YOU KNOW?
99% of our diploma students go into industry or progress onto higher education. Our reputation and strong industry links results in employers offering a substantial number of career opportunities for our students



Great industry links

We have been offering agriculture courses here at Reaseheath for 90 years, hence our countrywide reputation! Thanks to our dedicated and industry relevant staff we've built up an expansive network of partners, mentors and contacts to ensure our students are trained and prepared successfully to serve this great industry.

Our Level 3 Advanced Technical Extended Diploma is a unique three-year sandwich course, with your middle year spent on work placement. This year in industry provides you invaluable experience – great for your CV!

Where you'll be studying

You'll be based on our campus farm and study in dedicated classrooms and computer suites. You'll have lockers for your outdoor clothing and be in easy reach of our dairy, pig and sheep units, machinery sheds and 252 hectares of owned and rented farmland.

Elsewhere on campus there's a library, laboratories, plenty of computer rooms, quiet study areas and our new indoor and outdoor sports facilities.

Earn while you learn

If you'd prefer the apprenticeship route, we offer stock person and crop technician apprenticeships. You will learn all the technical skills needed for employment within the industry whilst continuing to build on your existing knowledge and experience. As well as working on-farm you'll come into college to study one day a week.

University study

If you're enjoying life at Reaseheath as an agriculture student, don't forget you can progress on to your degree here at University Centre Reaseheath. You can choose to study agriculture or specialise in the field of dairy herd management.

Our courses

Whichever course you choose to study, you'll be supported by experienced and knowledgeable staff who really put themselves out to make sure you make the most of your education here at Reaseheath.

Foundation Level 1 in Agriculture

Want to find out about agriculture, horticulture and the environment? This is the course for you!

Level 2 Technical Certificate in Agriculture

An excellent one year course to develop agricultural skills whether you have a farming experience or not

Level 3 Advanced Technical Certificate in Agriculture

A one year programme that develops wider agricultural skills and knowledge and supports progression

Level 3 Advanced Technical Extended Diploma in Agriculture

A three year programme that is equivalent to 3 A Levels with the UCAS points needed for university



You will complete a one year relevant work placement during your second year

Technical Baccalaureate in Agriculture

The equivalent of 4.5 A Levels, this course includes a Level 3 maths qualification plus an industry project

Level 2 Stockperson (Beef, Pigs, Sheep, Dairy) Apprenticeship

Earn while you learn by working on-farm as a stockperson raising animals

Level 3 Crop Technician Apprenticeship

Learn how to use the latest technology to increase crop yield with this apprenticeship

Discover our courses:

 reaseheath.ac.uk/agriculture

LAND AND SUSTAINABLE ENVIRONMENT ACADEMY

AQUATIC ECOSYSTEMS AND FISHERIES MANAGEMENT

HIGHER LEVELS

Offering a great pathway to higher level aquatic-based study, including marine biology

Fishing for a great career?

If you have a passion for aquatic life, fresh or salt water, you can gain a rewarding career in a wide variety of fishery management roles with our industry driven qualifications.

This training route is a great way to gain the practical skills and knowledge that employers are looking for.

You'll gain experience working with a range of aquatics, from exploring the types of habitat and species to looking deeper into fish biology, disease and health related best practice.

Our specialist staff have all worked in industry and have key industry links, so you're in a great position to get a job once you've completed your qualification. The nature of this course also offers a great pathway to higher level aquatic-based study, including marine biology.

↓ At a glance

Level 2 Diploma in Countryside and Environment

Level 3 Advanced Technical Extended Diploma in Land and Wildlife Management (Fisheries)

Technical Baccalaureate in Land and Wildlife Management (Fisheries)

WHY STUDY AQUATIC ECOSYSTEMS AND FISHERIES MANAGEMENT AT REASEHEATH?

Visit industry partners including the Environment Agency and train alongside local and national conservation groups and hatchery owners

Industry work placements will equip you with vital skills and could even take you abroad!

You'll be taught by our dedicated staff, all of whom have extensive experience across the field and are passionate to share their knowledge

Small cohort groups will give you a more personalised learning experience and plenty of support as and when you need it

Off campus, you'll go on trips to local aquariums, beaches, marine fisheries and study tours across the UK and beyond, meaning you'll get a well-rounded student experience

Close contact with the industry will ensure that you are up to date with current trends and practice

Where could your career take you?

Many of our students go straight onto university to follow a range of interests, including marine biology, freshwater biology and environmental science or into employment once they've completed this course.

If you enjoy working outdoors and are interested in the management and care of fish there's lots of career opportunities for you to explore. Here's an idea of just some of the roles and sectors you could go in to:

- Fish farmer
- Fisheries officer
- Fish farm technician
- Fishery manager
- River keeper
- Estate management
- Water industry
- Ecology and conservation
- Associated retail trades
- Ornamental fish industry

With starting salaries around £20,000–£25,000, working as a fisheries officer could be a prosperous and satisfying career!

Former student profile

Tom Forrester, 22

Current job role: Fishery manager at RH Fisheries

Previous course: Level 3 Extended Diploma in Fisheries Management, 2016

"After leaving school, going to sixth form and finding it just wasn't for me, I knew I needed to focus on my passion for fish. Joining the Reaseheath fish management course was completely the right choice for me. I found the practical sessions, supportive tutors and working with likeminded people really helped prepare me for my current role.

"Straight after I finished my course I was offered a full time position as a Fishery Manager at RH Fisheries, a company I'd worked for part time while studying. I've known since the moment I left school that I wanted to be a fisheries manager at some point, but never expected to get the chance to take on such a great role so soon after completing my course."



Student profile

Martin Searle

Level 3 Extended Diploma in Fisheries Management

School: Liverpool Community College

Next step: Masters Degree in Environmental Science

Ambition: Fisheries manager or scientific researcher

"I worked as a chef for ten years but my passion is the environment, particularly fishing, so I decided to return to education and change career.

"I didn't realise what options would be available to me but my eyes were really opened by this course. Fisheries is a good industry to be in with lots of employment opportunities.

"I've been accepted at university and I'm looking forward to studying more in-depth science and research. I've also been offered a job at an aquatics shop where I did my work experience, so I'll do that part time to fund my degree."



Your Reaseheath Experience

Beyond the campus there's lots of opportunities to get involved in activities and trips to further broaden your college experience, including the chance to go on study tours across the UK and abroad.

A group of aquatic ecosystems and fisheries management students visited Tenerife to assist The Atlantic Whale Foundation (AWF) with their ongoing research into the islands' dolphin and whale populations (cetaceans). Based at the AWF's research hub, our students joined a group of global volunteers who are involved in the conservation and protection of this area which is an important natural habitat for cetaceans.

Students gained hands-on experience by assisting researchers to monitor resident populations during whale watching boat trips and joined inland trekking expeditions where surveys were conducted into flora, fauna and other community conservation projects.





Industry links

Regular sessions working with the Environment Agency give our students a great chance to get to grips with real life consultancy projects and plenty of opportunities to put their problem-solving skills to the test. You will get involved in netting, fish surveys and further broaden your knowledge of fish habitats and the management of fisheries working alongside industry professionals. Trips to local fisheries, aquariums, aquatic shops and guest lectures from experts across the industry, including the Lancashire Wildlife Trust will further add to your skills and knowledge of aquatics.

You will complete an industry focused work placement during your time as student. Whether it be working at a fishery, aquatic related business or working to help the environment, you will have the opportunity to really put your skills learnt in the classroom and on campus in to practice. All tailored around ensuring you'll be well equipped for the world of work by the end of your course.

During your course you'll also have the opportunity to study additional qualifications such as safe use of chainsaws and ATV handling – a fantastic addition to your CV!

Industry view

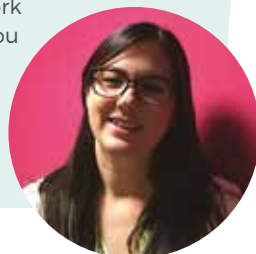
Holly Male

Fisheries Team Leader

Environment Agency

"At the Environment Agency, we have been working with students from Reaseheath on a number of projects and work areas. It has been fantastic to see such enthusiasm for the work we do.

"Our aim is to protect, maintain and improve fisheries across the country. If you have a passion for fisheries, biodiversity and ecology it's a great industry to work in. No two days are the same and the work we do is always varied, you get to work with people who share your passion and want to make a real difference to the environment."



Our campus and beyond

Our campus is well equipped with a wide range of on-site aquatic bodies and industry recognised equipment that complements the wealth of knowledge the teaching staff provide in the classroom.

We have excellent support from local fisheries and professional anglers, which allows our students to work alongside the best in the field. The college is ideally located in the heart of Cheshire with great links to Manchester, Liverpool, Chester, Birmingham and surrounding areas, perfect for our regular field trips and off-site practical sessions.

DID YOU KNOW?

With around 3,200 people employed in fish management at present, the industry is undergoing rapid change, so there's an ever-growing need for highly skilled staff

Our courses

Get to grips with captive husbandry, fish biology and disease, fisheries, aquariums, aqua culture, conservation and sustainability. Our courses offer a broad introduction to the industry and are a great stepping stone if you're looking for a career with fish.

Level 2 Diploma in Countryside and Environment

Explore the ecology and practical management of all the major habitat types in Britain in this one year course

Level 3 Advanced Technical Extended Diploma in Land and Wildlife Management (Fisheries)

This two year programme, equivalent to 3 A Levels, is designed to give you the skills and knowledge needed to pursue a successful career working with fish

Technical Baccalaureate in Land and Wildlife Management (Fisheries)

The equivalent of 4.5 A Levels, includes a Level 3 maths qualification plus industry project

Discover our courses:

 reaseheath.ac.uk/fish



LAND AND SUSTAINABLE ENVIRONMENT ACADEMY

ENVIRONMENTAL CONSERVATION

REWARDING

Start your journey
towards a challenging
and rewarding career
in conservation

Do you want to help protect the UK's natural environment?

If you're keen to work outdoors and to learn how to protect the British countryside, Reaseheath is the perfect place for you to study!

The British countryside, and the wildlife it supports, is increasingly under threat and our climate is changing. For people who are passionate about our great outdoors, there are careers in conservation which could give you the chance to help make a positive impact on our environment.

Our environmental conservation courses have been designed to equip you with the scientific knowledge and practical skills to start your journey towards a challenging and rewarding career in conservation.

You'll cover a broad range of subjects through practical sessions and classroom activities whilst carrying out coastal habitat surveys, undertaking woodland management works and working with local communities on a host of outreach projects.

You'll also have the chance to go on a range of field trips in the UK and abroad, to give you a variety of experiences studying in the British countryside.

↓ At a glance

Level 2 Diploma in Countryside and Environment

Level 3 Advanced Technical Extended Diploma in Land and Wildlife Management (Conservation)

Technical Baccalaureate in Land and Wildlife Management (Conservation)

WHY STUDY ENVIRONMENTAL CONSERVATION AT REASEHEATH?

Tackle field work projects including canoeing along the River Weaver surveying for water voles

Our inspirational teaching staff have all worked in the industry

Learn practical skills such as field surveying and animal and plant identification

Put your learning into real life practice with an industry placement. We work closely with partners such as the National Trust, the Forestry Commission and the Wildlife Trusts

Join field trips where you'll explore the UK and overseas including visits to the Isle of Skye and Tenerife

Hear from leading industry practitioners from organisations including The National Trust, The Black Fish, RSPB, English Heritage and Cheshire Wildlife Trust

Where could your career take you?

The nature of our courses mean that your career progression options are truly diverse. Many of our students choose to further their studies at university whilst others go straight into employment in the industry.

You could find yourself investigating the importance of UK ecology to support conservation through improving wildlife habitats and recording species numbers across the UK.

Your career options with an environmental conservation qualification are as diverse as the British countryside you will be working in! A number of key roles you could progress on to include:

- Ranger
- Conservation assistant or officer
- Environmental ecologist
- Forest Schools practitioner
- Countryside contractor
- Environmental project manager

As a countryside ranger you'll be working outdoors, come rain or shine, in some of UK's most stunning places

Former student profile

Beth Williams

Current job role: Estates manager, Trustgreen

Previous course: Level 3 Advanced Technical Extended Diploma in Land and Wildlife Management (Conservation), 2016

"While I was a Reaseheath student I had the chance to do my work placement with Cheshire Wildlife Trust, which was a great opportunity and led me to my first full time role working within the conservation grazing team straight after finishing college.

"I was nervous about going straight into full time work after college, especially as lots of people around me were off to university, but the skills, professional qualifications and practical experience I gained on the conservation and wildlife course made sure I was fully prepared.

"I'm now working as the Estates Manager for Trustgreen, an open space land management company. It's completely different from my previous job, but I'm thoroughly enjoying it!"



DID YOU KNOW?

There are over 3,000 environmental conservation organisations in the UK – jobs are competitive, but if you've got the drive and determination there are plenty of opportunities

Student profile

Jonny Taylor

Level 3 Advanced Technical Extended Diploma in Land and Wildlife Management (Conservation)

School: Tytherington School, Macclesfield

Next step: Specialist degree

Ambition: Estate manager in the Highlands

"Conservation is an amazing field to come into. I spent part of my work experience on the royal Balmoral Estate in Scotland. It was an incredible, once-in-a-lifetime experience and really cemented what I want to do in the future.

"I learned about upland environments and used a lot of skills I've learned at college. I'll be doing more work experience in the Peak District too.

"I'm enjoying my course and, because I live in, I can make the most of the great social atmosphere here too. I'm RAG Vice-Chair and we do so many great fundraising events. The student socials are amazing too."



Your Reaseheath Experience

It's non-stop action for our conservation students. From working on campus to getting involved in community-based projects, there's so many opportunities to gain valuable experience that will stand you in great stead to get a job or go onto further studies once you've finished your course.

The focus of this course is on the UK countryside, but if you've got your sights set on working further afield, you'll gain lots of transferable skills, so you'll be well equipped to work anywhere in the world!

Study tours will give you the chance to socialise with your classmates, make industry connections and explore the countryside in more depth, like our most recent trip to the Isle of Skye. Students took part in surveys and lots of other practical conservation work, all adding to their practical skills and knowledge while exposing them to some of the most beautiful landscapes in the UK.

Our environmental conservation students also enjoyed an overseas study tour to Tenerife. The focus of the trip was marine conservation with students undertaking important research into the islands' dolphin and whale populations.





Industry links

We have strong training partnerships with key environmental organisations including the National Trust, the Forestry Commission and the Wildlife Trusts. As part of your course you will complete an industry relevant work placement giving you valuable experience for your CV. Last year one of our students did their work placement on the Brecon Beacons National Park in Wales!

You'll also do additional industry qualifications such as chainsaw handling and safe use of brushcutters, all to help complement your core studies and further enhance your employability.



Industry view

Mark Pritchard

Tyrer Ecological Consultants Ltd

"Working in conservation has allowed me to achieve a sense of personal happiness and a level of general content I never dreamed possible. You never stop learning in this job sector, animals and habitats do not always follow the guide books, and as such, an open mind, an ability to adapt and an ability to overcome in the face of adversity is important. The most important tool in any conservationists arsenal however is enthusiasm. Without that you will not last long. Work hard, establish networks through volunteering, remain positive, take each day as it comes, and you will do very well in this sector."



Working in the community

Birdwatching, bush craft and campfire cooking were among the Forest School activities led by our environmental conservation students at St John's CE Primary School in Sandbach.

Our students also redeveloped woodland in the school grounds to make it more accessible for both pupils and wildlife. They selectively felled trees, built habitat piles, designed and installed a bird screen and renovated a fire pit.

A local Rainbow Girl Guiding group also enjoyed working with our students building bat boxes to place around the church site where they meet.

Where you'll be studying

Studying amongst 330 hectares of farms, parklands, lake and woodland means you're never far from the environment we love! Our beautiful campus provides plenty of opportunities for you to develop your practical skills and you'll be close to some of the best countryside the UK has to offer – with Cannock Chase, The Roaches, the Peak District and North Wales right on the doorstep.

Our courses

Whether you're considering a career in countryside management, environmental education, consultancy, ecology or as a ranger, our environmental conservation courses will give you a head-start in the industry.

Our knowledgeable staff, community links and industry partnerships will ensure that you leave college with the practical skills and knowledge industry are looking for.

Level 2 Diploma in Countryside and Environment

Explore the ecology and practical management of all the major habitat types in Britain in this one year course

Level 3 Advanced Technical Extended Diploma in Land and Wildlife Management (Conservation)

A two year programme that is equivalent to 3 A Levels with the UCAS points needed for university

Technical Baccalaureate in Land and Wildlife Management (Conservation)

The equivalent of 4.5 A Levels, includes a Level 3 maths qualification plus industry project

Discover our courses:

 reaseheath.ac.uk/conservation



LAND AND SUSTAINABLE ENVIRONMENT ACADEMY

FLORISTRY

CREATIVE

Classes take place in our dedicated studios and are practical and creative in a wonderfully relaxed atmosphere

If you love plants and flowers and have artistic and creative flair, floristry is the career for you!

Our award winning floristry department is recognised as one of the UK's most successful and progressive providers of floristry education.

Our staff are highly qualified and have commercial backgrounds, are passionate about floristry and floral design and are committed to teaching their craft to the highest level. Although the department has been established for 50 years and we have an outstanding reputation for our training, we certainly don't rest on our laurels! Our staff continue to train with reputable international designers such as Wally Klett and Gregor Lersch and we enjoy workshops with professionals such as customer service and sales guru Tim Huckabee, founder and president of FloralStrategies.

Classes take place in our dedicated studios and are practical and creative in a wonderfully relaxed atmosphere. You'll be encouraged to achieve and have fun at the same time! As part of your formal qualification you'll also complete work experience so you're fully prepared to join the industry.

↓ At a glance

Level 2 Award, Certificate and Diploma in Floristry

Level 3 Award, Certificate and Diploma in Floristry

WHY STUDY FLORISTRY AT REASEHEATH?

Our courses range from introductory level to in-depth, industry recognised courses up to City & Guilds Level 5 Master Diploma in Professional Floristry, so there's no limit to your ambition

You could compete in national competitions such as WorldSkills UK and or be on a medal winning team at the RHS Flower Show Tatton Park or RHS Chelsea Flower Show

You'll complete relevant work experience and, at college, produce designs for clients under supervision. You may also work in our local community, preparing displays for hospices, stately homes and flower festivals

You'll be introduced to the Strelitzia software management system, a widely used web-based programme which incorporates all aspects of running a floristry shop into one system

You may have the privilege of working alongside inspirational top level florists. Some staff and students helped royal florist Shane Connelly to prepare a floral arch to mark the 90th Queen's birthday

You'll enjoy behind the scenes visits to floristry shows and businesses, allowing you to fully understand what goes on in your industry

Where could your course take you?

Almost all our full time students progress into employment, self-employment or further training. Some take the chance to travel and experience different countries and cultures, finding dream jobs in exotic and sun drenched locations such as the Bahamas, Bermuda, the Cayman Islands and France.

There's a wide variety of jobs on offer including:

- Floristry shop owner
- Wedding and party specialist
- Member of floral decorating team
- Regional manager
- Self employed freelance
- Demonstrator
- Lecturer
- Workshop presenter / organiser
- Cruise ship florist
- Staff florist at prestigious hotel
- Studio assistant
- Sales and marketing representative
- Specialist grower

A florist shop manager typically earns £24,000 a year, successful business owners considerably more

Former student profiles

Robyn Longden

Current job role: Florist with Ian Lloyd Events

Previous courses: Level 1, 2 and 3 Diplomas in Floristry at Reaseheath

"I studied floristry at Reaseheath for three years and I now work for Ian Lloyd, who's a former Reaseheath student too. Ian is an award winning florist and judge and we work at some amazing weddings and events.

"Since working for Ian I've won gold and silver medals at RHS Chelsea's 'Young Florist of the Year' and when I was a student I represented Reaseheath at the WorldSkills UK national finals.

"I love the variation of floristry. No day is the same and there are endless techniques to use and refine. I'm constantly learning and I find that so exciting."



Dave Billington

Current job role: Floristry technician, Reaseheath College

Previous courses: Certificate in Garden Design, Level 3 Diploma in Floristry

"I originally studied garden design and brickwork at Reaseheath and ran my own garden design business. Some clients asked me to suggest decorative plants for indoors as well as outside their home so I decided to study floristry too. I loved the creativity – and I'm now on the college teaching team!

"Floristry is a test of originality, inventiveness and imagination. It's about pushing boundaries with creations that people may have not seen before as well as creating dreams in magical settings. I enjoy interacting with people and seeing their reactions to floral displays. It's very rewarding."



Student profile

Amelia Simpson

Level 2 Diploma in Floristry

School: Leek High School

Next step: Level 3 Diploma in Floristry

Ambition: To work in a successful florist shop

"I chose to study floristry because I'm very creative and because the industry offers so many different opportunities.

"I've loved learning the basic skills and techniques, then having my own input to create different designs. There's so much to learn, but the lecturers are very supportive and we work in a lovely relaxed atmosphere.

"I've done regular work experience at a florist's shop and I've been part of a team who decorated a stately home for Christmas. I'm looking forward to more opportunities at Level 3, like taking part in WorldSkills UK competitions and RHS shows."



DID YOU KNOW?

There are over 6,000 floristry businesses in the UK employing 29,000 people!

A French adventure

Property lawyer turned floral artist Karen Cope enjoyed a dream work placement in France when she joined a booming wedding and events floristry business.

Karen was told about French Flower Style by her tutor Helen Cooke, and within a short time she was working alongside owner Lisa Gatenby, helping to create glorious designs for international brides in fairytale chateaux.

Karen recalls: "It was a dream to be creating such beauty, from majestic sweeping staircase arrangements to magnificent floral archways, foliage chandeliers and opulent pedestal designs. Every day was a new challenge with the perfect blend of hand holding and independent, confidence boosting work."

Read more:

 reaseheath.ac.uk/french-adventure





Industry view

Simon Lycett

London Event Florist

"Not all of us want to work in IT. Not all of us want to work in an office.

"My team and I travel the globe creating floral fabulousness. Try it... become a florist."



Where you'll be studying

You'll learn your floral design skills in dedicated studios in our newly built Centre for Horticulture, the Environment and Sustainable Technology. You'll be with like-minded students in a friendly, supportive atmosphere, and you'll have access to all the materials and accessories you'd find in a professional florist's shop.

You'll also be encouraged to develop your creativity by foraging in the grounds of our beautiful campus, home to a spectacular range of flowers, foliage and natural art forms.

The nearby Feast café has a wide range of snacks and light meals, or you could choose to eat in our modern restaurant or picnic by our lake. Elsewhere on campus there's a library, plenty of computer rooms, quiet study areas and our new indoor and outdoor sports facilities.

Our courses

Whichever course you choose to study, you'll be supported by experienced and knowledgeable staff who really put themselves out to make sure you make the most of your education here at Reaseheath.

Level 2 Award, Certificate and Diploma in Floristry

An excellent foundation, particularly if you have little or no experience in floristry

Level 3 Award, Certificate and Diploma in Floristry

A good choice if you have previous floristry experience or have worked in a similar industry



Can also be studied part time over 2 years - perfect for career changers!

Discover our courses:



reaseheath.ac.uk/floristry

Next steps

Level 4 Higher Diploma in Floristry

Suitable for those in management or in a senior role

Level 5 Master Diploma in Professional Floristry

Ideal for professional progression to the highest level

Open College Network (OCN) and Leisure Courses

Great for progression onto professional courses or purely for fun

LAND AND SUSTAINABLE ENVIRONMENT ACADEMY

FORESTRY AND ARBORICULTURE

REAL LIFE

Learn best practice for tree care on campus and support the local community with real life arboriculture



The management of trees and woodland is vital for the sustainable development of our countryside, urban spaces, and for conservation.

Our forestry and arboriculture qualifications are a great route into the professional world of forestry and arboriculture. No two days at college are ever the same and you'll spend at least half of your study time hands-on taking part in practical activities.

From tree climbing and learning best practice for tree care on campus to supporting the local community with real life arboriculture projects, you'll gain a wide range of work experiences, perfect to enhance your CV!

The great thing about our courses is the majority of our students go straight into jobs after they've completed their studies. But if you're looking to go onto further study there's also plenty of opportunities, especially if you're keen to explore forestry, arboriculture or woodland ecology at a higher level.

↓ At a glance

Level 2 Diploma in Countryside and Environment

Level 3 Advanced Technical Extended Diploma in Forestry and Arboriculture

Technical Baccalaureate in Forestry and Arboriculture

WHY STUDY FORESTRY AND ARBORICULTURE AT REASEHEATH?

Look at the management of timber and other commercial crops when visiting estates across the country

Keep fit with the practical side of course!

No two days are ever the same at college!

Enjoy taking part in tree climbing competitions – last year our students were crowned tree climbing champions at the national arboriculture show

Explore the Reaseheath campus, taking your learning from the classroom into real life scenarios and learn the stories behind our range of unusual trees

Join professional arborists for a masterclass in the latest innovations in tree safety technology led by Sorbus International

Where could your career take you?

Careers in forestry and arboriculture are diverse, exciting and particularly rewarding for those who love the outdoors. Britain's forests and woodlands provide a wide range of different career opportunities that are vital to the preservation of the British countryside. Not only does Britain's forests and woodland support wildlife, they are good for the environment and contribute significantly to the quality of life of people in both rural and urban areas.

An idea of the types of roles you could go into once you've completed your studies with us include:

- Arboriculturist
- Tree officer
- Forestry worker
- Woodland manager
- Country estate worker
- Countryside / conservation contractor

Former student profile

Tom Bithell

Current job role: Trainee arborist, Arb Tree Care

Previous course: Level 3 Advanced Technical Extended Diploma in Forestry and Arboriculture, 2018

"Coming to Reaseheath I wasn't entirely sure where I wanted to take my career, I knew I liked working with trees, but wanted to explore the arboriculture industry further. I found I really enjoyed climbing, which was especially surprising as I'm actually scared of heights!

"I feel that being at college and gaining a greater understanding of the skills and safety around climbing has really helped build my confidence. It was through meeting people on my course that I came across the opportunity to work for Arb Tree Care. I'm working there full time now I've finished my course, and I'm excited to see where my career will take me next."



Student profile

Reece Pearce

Level 3 Advanced Technical Extended Diploma in Forestry and Arboriculture

School: Tarporley High School

Next step: Working in industry

Ambition: Tree surgeon

"I've always wanted to work with trees – the bigger the better. Eventually I'd like to get a job in Australia where the trees are huge and timber is big business.

"I've been really impressed with my forestry course. It's very practical and we get lots of experience in the college grounds and off-site. I've even represented Reaseheath in a college tree climbing competition run by the Arboricultural Association.

"I did my Level 2 Diploma in Countryside and the Environment first, which gave me a good insight into the industry. I spent my work experience with a tree surgeon and I now have a job with the same company."



Your Reaseheath Experience

As a forestry and arboriculture student you'll be learning from our industry experienced tutors and taking advantage of our 21-hectare college grounds, filled with a huge variety of trees to investigate.

Opportunities beyond the campus include the chance to take part in climbing competitions across the country. It's a great opportunity for you to really test out your climbing skills and it's also lots of fun!

DID YOU KNOW?

Combining forestry, arboriculture, harvesting and timber processing businesses, the trees and timber industry contributes more than £286 million to the UK economy





Employability

We're very proud of our links with industry partners such as Sorbus International and Stein. As part of your training you'll complete an industry relevant work placement and our industry partners will support you on your journey into employment.

Many students choose to combine their studies with part time work, which adds to their professional experience and supports their learning in the classroom.

You'll also get involved in community projects with local organisations and schools, all designed to add valuable experience to your CV.

All of our forestry and arboriculture students have the opportunity to study additional industry relevant qualifications such as chainsaw handling and aerial rescue.

Industry view

Jake Burgess

N&J Tree Services

Work Placement Provider

"The demand for professional arborists is constantly on the rise. A great perk of working in the industry is that the job keeps arborists fit and active, and they spend the majority of their days outside.

"Not only do arborists learn a professional trade, they learn about environmental impacts and about species of trees and plants too, offering well-rounded career opportunities."



Our courses

Our forestry and arboriculture courses are well recognised and highly respected amongst industry professionals across the sector. You'll be trained by experts in the field, who will give you the practical and scientific skills needed for the world of work or for progression on to further study at degree level.

Level 2 Diploma in Countryside and Environment

Explore the ecology and practical management of all the major habitat types in Britain in this one year course

Level 3 Advanced Technical Extended Diploma in Forestry and Arboriculture

This two year practical course, equivalent to 3 A Levels, is designed to give you a head start in your career as an arborist, forest ranger or similar roles in the industry

Technical Baccalaureate in Forestry and Arboriculture

The equivalent of 4.5 A Levels, includes a Level 3 maths qualification plus industry project

Discover our courses:



reaseheath.ac.uk/forestry

DID YOU KNOW?

The trees and timber industry employs an estimated 22,452 people through 3,920 businesses, so there's plenty of career opportunities

LAND AND SUSTAINABLE ENVIRONMENT ACADEMY

GAME AND WILDLIFE MANAGEMENT

INDUSTRY LINKS

The department has strong industry links and works closely with professionals across the field

Gamekeeping is one of the oldest professions in the country and still a popular career choice today.

Whether you are interested in pheasant and partridge, grouse or deer you will gain the experience required to get a job in the industry. A combination of resources on campus and excellent industry links off-site help to create outstanding, employable students.

Although a traditional job, the modern gamekeeper needs to understand how their role fits in an ever-changing environment where agriculture, forestry and conservation all play a part.

The department has strong industry links and works closely with professionals across the field, all valuable support for your career progression. Our course managers pride themselves on being truly passionate about their subject areas and all have their own extensive industry experience.

You'll have the chance to take part in a range of work placement opportunities as well as gain additional industry recognised qualifications including snaring and heather burning.

We're also well supported by organisations such as the National Gamekeepers Organisation, Game and Wildlife Conservation Trust and the British Association for Shooting and Conservation, and by our industry sponsors Kings, Massey Feeds and Ridgeline.

↓ At a glance

Level 2 Diploma in Countryside and Environment

Level 3 Advanced Technical Extended Diploma in Land and Wildlife Management (Game)

Technical Baccalaureate in Land and Wildlife Management (Game)

WHY STUDY GAME AND WILDLIFE MANAGEMENT AT REASEHEATH?

You'll help to manage two deer herds and gain practical experience in the larder at local estates

Our campus game rearing facilities means you'll be involved in collecting eggs from our own stock, incubating eggs and rearing pheasants

Our on-site rifle range and links with an external range ensures your competence in firearms

Enjoy clay shooting on campus and at the local clay ground at Mickley Hall where expert tuition is offered as part of your course

We have excellent links with local grouse moors in the Peak District where you will gain practical experience and take part in shoot days, supervised by staff

An on-site pheasant shoot and excellent links to local shoots means you'll get to take part in experience days while supervised by staff

Where could your career take you?

If you're looking for a career in the outdoors, gamekeeping and wildlife management could fit the bill perfectly for you! Come rain or shine you will be working outdoors, so if you enjoy battling against the elements and feeling fresh air in your lungs, keep reading.

Life as a gamekeeper can be very varied. The shoot season is sure to keep you incredibly busy as you will spend most of your time organising shooting activities and managing teams of 'beaters'. Aside from that, a large part of your role will focus on land management. For example, you could be cutting down trees in dense woodland, fixing fences, and repairing vehicles, such as quad bikes or tractors, meaning there's plenty of hands-on practical skills needed.

Many of the jobs in this industry come with added benefits such as rent-free accommodation on the estate you could be working on.

Some of the roles you could go into with our game and wildlife management qualification include:

- Pest control officer
- Gun dog trainer
- Underkeeper / beat keeper
- Game bird dealer
- Gundog trainer / breeder
- Working for organisations such as the British Association for Shooting and Conservation (BASC) or Natural England

You could find employment in any of these types of businesses:

- Sporting estates
- Game rearing
- Factoring of estates
- Shooting agents
- Suppliers of feed and rearing equipment

You certainly don't need a university degree to break into this line of work. However, gamekeeping and wildlife management careers are competitive so studying with us will help you stand out from the crowd when it comes to getting a job.

Student profile

Lewis Twigg

Level 2 Diploma in Countryside Management

School: Sir Thomas Boteler High School, Warrington

Next step: Level 3 Advanced Technical Extended Diploma in Land and Wildlife Management (Game)

Ambition: Head gamekeeper

"I've always enjoyed country pursuits and I think game keeping combines high level sport with the best in conservation.

"The Level 2 Diploma has been great preparation for my next course in game management. We've had practical experiences like building bridges and steps in country estates, and we've also studied the countryside environment and what we can do to conserve it. I've also earned my NPTC brushcutter licence, which will help massively on my CV.

"My lecturers have been really supportive and are always there to help. They want you to succeed and have a future and a career."



DID YOU KNOW?

There are around 5,000 gamekeepers employed full time in the UK

Your Reaseheath Experience

As a game student you will benefit from our strong industry links, including the British Deer Society and our sponsor Ridgeline Clothing. You'll get the chance to try out a range of kit from Ridgeline and will be given your own item of clothing to keep, all helping to support your studies.

It's important for students to get as much practical experience as possible. Trips to Scotland and having the chance to get involved in the whole process of deer stalking and preparation is just one of the opportunities you will experience off campus. You will also take trips to the Peak District, the Peckforton Estate and local shoots to further strengthen your practical skills.

Industry links

Life in the game and wildlife industry can be a truly fantastic lifestyle, and we're focused on preparing you for the world of work. One of the great things about this course is the additional qualifications you can do to further enhance your CV. You'll have the chance to complete training in heather burning, rat poisoning, trapping and snaring as well as study towards additional qualifications such as ATV handling and deer stalking.

Liam Bell

Chairman of the National Gamekeepers' Organisation

"Connah is a very worthy winner of this year's Frank Jenkins Memorial Trophy and I congratulate him on his success. The level of entries was extremely high and the judges had a difficult decision, but Connah's qualifications, commitment and practical skills set him above the other candidates. It is clear that he has a special talent and great aptitude which will take him far in our profession.

He is a credit to the gamekeeping staff at Reaseheath College, who have obviously prepared him well for entry into the gamekeeping and shooting world."



Connah Baker

Winner of the Frank Jenkins Memorial Trophy – a highly coveted award presented annually by the National Gamekeepers Organisation to the country's top gamekeeping student

Level 3 Advanced Technical Extended Diploma in Land and Wildlife Management (Game)

School: Wade Deacon High School, Widnes

Next step: Continuing to gain industry experience

Ambition: Head keeper

"I chose Reaseheath because it's one of few colleges to offer training in game management. I'd give the course full marks for the quality of teaching and the way the lecturers support you. It has a really friendly environment too.

"One of my biggest achievements has been winning the Frank Jenkins Memorial Trophy. It was an amazing experience and I'd like to thank my Course Manager Ged Hunston for putting me forward and supporting me. I've watched that award being presented at the Midland Game Fair since I was ten and never dreamed that one day it would be me in the arena!

"I've received a great foundation for my career at Reaseheath and gaining this award will stand me in good stead during my hunt for employment.

"Although I don't have a keeping background my family has always had an interest in working gundogs and country sports. My first work placement at Bostock Estate gave me an insight into the management of a big scale pheasant shoot and my second placement was on the Snailsden Estate, on a grouse moor in the Peak District.

"I was encouraged both by my lecturers, who sourced the placements, and the head keepers and I'm now applying to grouse estates for a job."





DID YOU KNOW?

Gamekeepers are responsible for managing 7.3 million hectares of land across the UK, working with farm managers and foresters

Industry focus

The Eaton Estate is part of the Grosvenor Estate and is a private owned organisation. It contains some 435 homes, 15 farms and 72 commercial units, 4 schools and over 10,000 acres of high-quality agricultural land in Cheshire, North West England. The estate provides graduate and apprenticeship schemes across a wide range of roles, leading to recognised qualifications.

Liam Kinch, completed his Level 3 Diploma in Game and Wildlife Management at Reaseheath College in 2018, which has helped him progress straight on to an apprenticeship gamekeeper position on the Eaton Estate.

Antony Jones

Headkeeper, Eaton Estate

"We're pleased with Liam's progress and look forward to helping him further his career. The industry needs hardworking, dedicated individuals who are committed to the job and the skills students learn at college are equally as important."

Our courses

Our knowledgeable and experienced staff and fantastic industry links will ensure that you'll leave college with great practical skills and invaluable knowledge of the gamekeeping industry.

So, whether you're an aspiring gamekeeper, beatkeeper, deer stalker, wildlife manager, warden or ranger, our game and wildlife management courses are ideal for you!

Level 2 Diploma in Countryside and Environment

Explore the ecology and practical management of all the major habitat types in Britain in this one year course


Level 3 Advanced Technical Extended Diploma in Land and Wildlife Management (Game)

This two year programme, equivalent to 3 A Levels, is designed to give you the skills and knowledge needed to pursue a successful career working in gamekeeping

Technical Baccalaureate in Land and Wildlife Management (Game)

The equivalent of 4.5 A Levels, includes a Level 3 maths qualification plus industry project

Discover our courses:

 reaseheath.ac.uk/game



TURN YOUR PASSION INTO YOUR CAREER

LAND AND SUSTAINABLE ENVIRONMENT ACADEMY

HORTICULTURE

CUTTING-EDGE

Cutting-edge
technologies and science
in the only college
facility of its kind

Join our student team to enjoy national success and stay abreast of fast changing technology.

Scientist to landscape architect, parks manager to tree surgeon – it's the sheer diversity of careers that makes horticulture so exciting and appealing.

Whether your workplace is a field of growing crops, a desk in a high tech city centre office or a championship golf course, you'll have plenty of options to branch out and specialise in one of the world's fastest growing industries.

At Reaseheath we've recognised how important the 'green industry' is going to be in the future and we've invested £8.3 million into our National Centre for Horticulture, the Environment and Sustainable Technology. If you join Reaseheath Horticulture you'll be introduced to cutting-edge technologies and science in the only college facility of its kind!

↓ At a glance

Foundation Level 1 in Horticulture

Level 2 Diploma in Horticulture

Level 3 Diploma in Horticulture
(Zoo Enclosure and Management)

Level 3 Extended Diploma in Horticulture
(with Diploma option)

Level 3 Extended Diploma in Heritage
Horticulture

Level 2 Horticulture and Landscape
Operative Apprenticeship

Level 2 Golf Greenkeeping and Sports Turf
Apprenticeship

Level 3 Crop Technician Apprenticeship

WHY STUDY HORTICULTURE AT REASEHEATH?

Enjoy visits to gardens with nationally significant landscaping and planting schemes

Get involved in the design and build of RHS medal winning show gardens and community gardening projects (you may even appear on TV!)

Receive relevant training for a modern industry including work experience with our network of partners

Have the chance to compete in WorldSkills UK landscaping competitions and take advantage of the unique training workshops available to you

Study in our state-of-the-art commercial production unit with its automated glasshouses, computer controlled hydroponic system and innovative LED lighting

Our 21-hectares of formal gardens and grounds is the perfect learning environment for horticulture students, with specialist plant collections, unusual trees, designed landscapes and sports pitches

Where could your career take you?

If you are interested in horticulture you're likely to be fascinated by science and nature and enjoy working out of doors. Perhaps you can see yourself helping to feed a growing global population or transforming cityscapes for workers and residents.

Or maybe you'd like to be at the forefront of research, work at world famous botanical gardens or manage championship sporting venues abroad.

Here are just some of the choices waiting for you:

- Scientist
- Biochemist
- Scientific researcher
- Landscape architect
- Field scale crop production manager
- Produce quality manager
- Garden designer / landscaper
- Head gardener
- Head greenkeeper
- Amenity supervisor
- Commercial nursery manager
- Nursery production foreman
- Kitchen gardener
- Tree surgeon
- Self employed gardener
- Garden centre manager
- Sales and marketing manager
- Field trials assistant

Typical salaries: head of grounds maintenance team £40,000 plus, head gardener £36,000, nursery supervisor £30,000, senior gardener £28,000

Former student profile

Rick Tomlinson

Current job role: Senior Landscape Manager with The Environment Partnership

Previous courses: Foundation Degree Garden and Landscape Design; BSc Landscape Design and Management; MSc Landscape Architecture; Chartered Member of the Landscape Institute

"The horticulture industry is incredibly varied and as a landscape manager I work across many different disciplines. My job is very interesting as I work with corporate clients, large developers and government departments. About half of my job is office based preparing reports and the rest of the time I'm out on-site or at meetings."



Student profile

Tabitha Clare

Level 2 Diploma in Horticulture

School: Hulme Hall Grammar School then Macclesfield College

Next step: Level 3 Extended Diploma in Heritage Horticulture

Ambition: Horticulturist

"I've loved my course. It's been fun and I'm really excited about being here for another two years on the Level 3 Extended Diploma. I've had so many opportunities, helping to build show gardens and even working on Alan Titchmarsh's volunteer team for ITV's 'Love Your Garden'. I never dreamed I would be on TV when I joined Reaseheath!"



Your Reaseheath Experience

Work placements, community projects, workshops, competitions – our horticulture students certainly don't let the grass grow under their feet! This year our student teams won a silver medal for their show garden at RHS Tatton Flower Show and a bronze medal for their equine inspired garden in the 'Young Gardeners of the Year' at the Ascot Spring Garden Show.

We also had two students through to the national finals of the WorldSkills UK landscaping championships, while others joined TV presenter Alan Titchmarsh and his volunteer team for ITV's 'Love Your Garden' and helped to transform an outdoor area at the Royal Manchester Children's Hospital into a haven for young patients and families.

Designing a show garden for members at the Cheshire Show, building a herb garden for a celebrity chef and a variety of projects on campus were just a few of the other opportunities they had to build up their practical skills.

DID YOU KNOW?

The horticultural industry in the UK contributes £9 billion to the economy each year and employs around 300,000 people

Industry links

We have strong training partnerships with key organisations such as the Royal Horticultural Society, the Landscape Institute, the British Association of Landscape Industries, the Agriculture and Horticulture Development Board and the Association of Professional Landscapers.

We also collaborate with key suppliers including Makita (power tools), Marshalls Paving, Green-tech Ltd (landscaping materials) and J A Jones and Sons (plant nursery). Thanks to these industry links, our students enjoy workshops supported by industry professionals, ensuring they have the technical skills and knowledge of working with the latest materials and equipment.

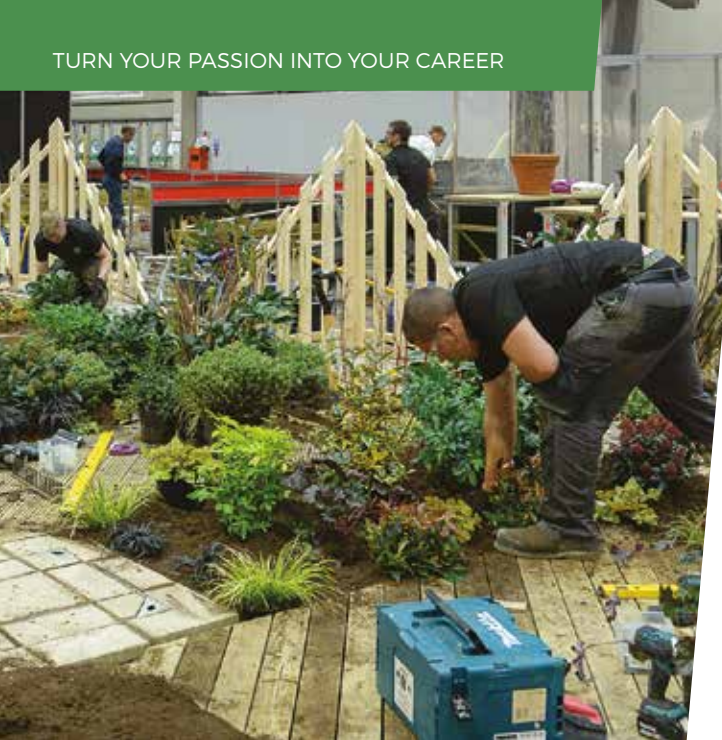
Industry view

Peter Styles

Managing Director, Lingard Farrow Styles Landscape Architects and Environmental Consultants

"The horticultural industry embraces a whole range of exciting, fulfilling and profitable opportunities in the areas of research, media, design, practical skills and commerce. The horticulture courses offered at Reaseheath are the first step towards such a career."





Where you'll be studying

You'll be based in our new Centre for Horticulture, the Environment and Sustainable Technology, which (as the name suggests) is dedicated to all things horticultural.

The centre houses our hi-tech commercial production unit, where we are trialling different systems of growing tomato and strawberry crops and a variety of herbaceous plants. We also have a dedicated design studio with the latest Mac computers and 3D design tools, modern classrooms, a laboratory and our Feast café.

Elsewhere on campus we have a well stocked library, computer rooms and quiet study areas.

Earn while you learn

If you'd prefer to earn and learn at the same time, we offer horticulture apprenticeships at Levels 2 and 3. Depending on your career ambitions you can choose to specialise in either amenity, landscape and production horticulture or golf greenkeeping and groundsmanship. You will be supported by our work-based assessors in the workplace and either come in to college one day a week or in blocks depending on the apprenticeship you choose.

DID YOU KNOW?

72% of horticultural business are struggling to recruit enough employees, especially for technical, academic and managerial roles

Our courses

While many of our students opt to gain a good grounding on our lower level courses others start at a more advanced level, particularly if they have high academic grades or previous experience.

Whatever your circumstances, our experienced staff will help you choose the course which is right for you. And don't forget, all students complete relevant work experience.

Foundation Level 1 in Horticulture

A great introductory course to the horticulture industry with lots of support if you need it

Level 2 Diploma in Horticulture

A good starting point for any age if you're looking to start a career in the horticultural industry

Level 3 Diploma in Horticulture (Zoo Enclosure and Management)

This is for you if you'd like to specialise in maintaining the environment of zoo animals

Level 3 Extended Diploma in Horticulture (with Diploma option)

You'll gain a wide range of specialist technical and practical skills, putting you in a strong position in the jobs market or to study for a degree or further training

Level 3 Extended Diploma in Heritage Horticulture

You'll get the chance to learn more about the management of historic gardens and gain work experience in one of the prestigious Cheshire Gardens of Distinction

Level 2 Horticulture and Landscape Operative Apprenticeship

Work for a landscape gardener or contractor whilst studying at college one day a week

Level 2 Golf Greenkeeping and Sports Turf Apprenticeship

Combine work on a golf course or sports ground with block release study at Reaseheath

Level 3 Crop Technician Apprenticeship

Delivered in blocks, this apprenticeship is for you if you enjoy growing and managing crops

Discover our courses:

 reaseheath.ac.uk/horticulture

HEALTH, SPORTS SCIENCE AND PERFORMANCE ACADEMY

ADVENTURE SPORTS

ACTION-PACKED

Our action-packed adventure sports courses offer a great balance between practical and theoretical study

Are you a risk taker, a thrill seeker or an adrenaline junkie?

Push your boundaries and overcome new challenges with our fast-paced adventure sports courses! If you get a buzz from pushing your limits and want an energetic career where your adventurous spirit will be put to good use, our courses could be the answer.

Led by experienced and highly qualified staff you'll build self-reliance, leadership skills and the ability to inspire others while you try out a wide variety of outdoor sports at least once a week. What's more, you'll complete several weeks of relevant work placement to give you a real taste of the industry.

If you want a career that allows you to do what you love and gives you the chance to travel – you've come to the right place!

↓ At a glance

Level 1 in Sport and Public Services

Level 2 Diploma in Adventure Sports

Level 3 Extended Diploma in Adventure Sports (with Diploma and Subsidiary Diploma options)

*Study tours and National Governing Body Awards are charged at an additional cost

WHY STUDY ADVENTURE SPORTS AT REASEHEATH?

Develop your practical skills and gain experience in a wide range of outdoor activities including climbing, mountaineering, canoeing, kayaking and mountain biking

Our first-class teaching facilities include an on-site climbing wall, and high and low ropes course and altitude chamber

Based at our campus you will be near some of the best outdoor environments the UK has to offer – with Cannock Chase, The Roaches, the Peak District and North Wales right on the doorstep

You'll gain valuable work experience with our industry partners and get the chance to achieve National Governing Body Awards from The British Canoe Union, Mountain Training and British Cycling*

See more of the world with our incredible study tours like skiing and snowboarding in the Alps, crewing a yacht to France with the Rona Sailing Project, and winter mountaineering in the Scottish Highlands*

You'll have access to top of the range specialist outdoor equipment such as mountain bikes, sailing boats, kayaks and canoes

Where could your career take you?

As part of this fast-paced and dynamic industry, you'll find plenty of exciting careers which offer amazing travel opportunities:

- Outdoor instructor in Britain or abroad
- Outdoor education teacher in schools or outdoor centres
- Lead groups at home and abroad in the adventure tourism sector
- Professional athlete in the adventure industry
- Adventure sports retailer
- Adventure sports coach
- Adventure training instructor in the armed services
- Expedition leader

Lots of our students find jobs as instructors with holiday companies or outdoor activity centres and – after gaining all-important experience – many progress on to higher level study or into managerial roles. Many jobs in this sector come with added benefits such as on-site accommodation.

The average salary for an experienced outdoor instructor is £20,000 per year while senior instructors, expedition leaders and managers can earn more than £33,000 per year

Former student profile

Paige Milward

Current job role: Cruise ship cycling tour guide

Previous course: Level 3 Subsidiary Diploma in Adventure Sports

"I came to Reaseheath because I wanted a challenging course which would give me recognised qualifications – and it's opened doors to so many opportunities.

"I've worked as a holiday advisor in Austria, then as a cycling tour guide on a cruise ship. On my first contract I took cycling excursions round historic Mediterranean cities like Malaga, Barcelona and Cadiz, then I did the same in the Caribbean. This year I'm based in Hamburg for cruises round Europe.

"I live for this job! It's such a fun industry to be in. You're away for five months at a time, so you meet a lot of people and make good friends. I wouldn't have got where am if I hadn't gone to Reaseheath!"



Student profile

Seb Murphy

Level 3 Extended Diploma in
Adventure Sports

School: Queen Elizabeth II High School,
Isle of Man

Ambition: Police officer or outdoor
pursuits instructor

Next step: Degree in related subject

"I enjoy outdoor sports and I like to help the community, so this course has given me a great start to either profession.

"I completed the Level 2 Diploma first, which gave me a great introduction to the industry. The Level 3 Diploma has been more in-depth and very applicable to what I want to do. It's completely opened my eyes to industry law and legislation and I enjoyed my work experience, leading sports groups at a primary school. I've also gained extra qualifications which will be really useful for my CV."



DID YOU KNOW?

The adventure sports industry just keeps growing in popularity. Over the last 2 years it's estimated that 337,000 more people are enjoying activities such as hill and mountain walking, rock climbing, abseiling, orienteering or high ropes

Your Reaseheath Experience

Our study tours* are great fun and build the industry experience and skills that employers want.

Visit the Alps to experience the snow sports industry and improve your skiing or snowboarding skills. You will work alongside professional instructors and get a taste of the local culture.

Take a week-long sail training voyage crossing to France or the Channel Islands as part of the crew with the Rona Sailing Project. You'll develop your teamwork skills whilst gaining royal yachting qualifications.

Challenge yourself on overnight expeditions to Snowdonia, the Lake District and the Peak District, and brave sub-zero conditions on our winter skills course in the Cairngorms. You can develop essential survival and mountain skills and complete mountain skills awards.

Explore the River Wye, Tweed and Tay by canoe and join exciting climbing tours such as bouldering in Fontainebleau and sport climbing in El Chorro.

Employability

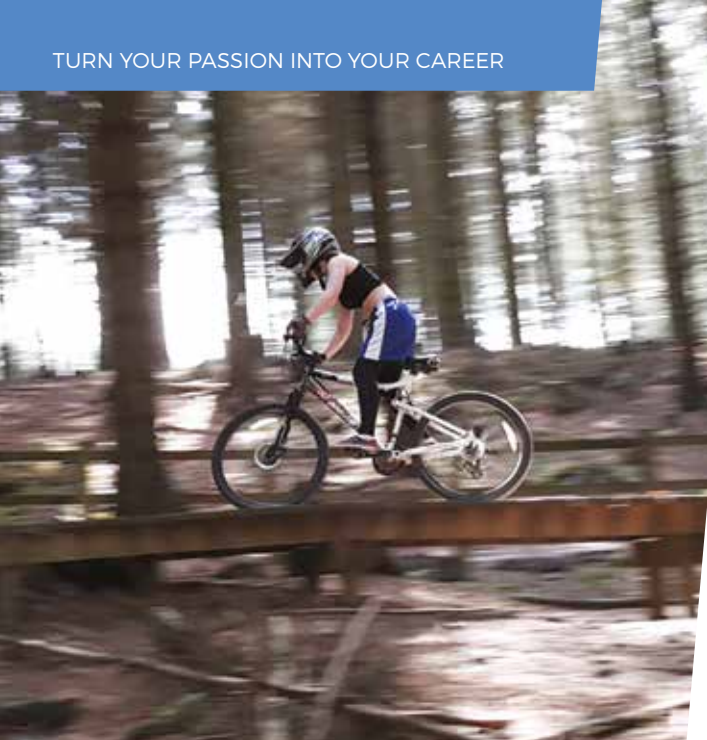
Our experienced and highly qualified staff will pass on valuable knowledge and skills in both the practical and theory elements of your course.

You'll benefit from gaining work experience with our many industry partners and there's the chance to achieve National Governing Body Awards* from well-recognised organisations such as The British Canoe Union, British Cycling and Mountain Training.

You will also complete a relevant work placement. Some of our former students have worked at outdoor centres and local schools with some even choosing to travel overseas to complete their placement.

Give something back: Volunteering is very popular in the outdoor sector. It's a powerful addition to your CV and employers value the experience and transferable skills you'll gain while making a difference to others.

*Study tours and National Governing Body Awards are charged at an additional cost



Our campus is your classroom

Our campus offers you a range of first-class facilities and resources both inside and outside of the classroom. We even have our own college lake which is great for developing your kayaking skills before you move to more challenging open waters.

You can develop your team building skills and overcome new challenges by training on our 30ft high ropes course. The course is made up of many pulse-raising elements including Jacob's Ladder, Jungle Vines, the Seesaw and the Leap of Faith.

Our indoor climbing wall will also enhance your climbing skills before you progress to the rock outside.

Our facilities will help you to improve your own skills while you learn how to coach others to succeed – which is great for your personal development.

DID YOU KNOW?

Over 300,000 households in the UK regularly enjoy the thrills and spills of canoeing

Our courses

Our action-packed adventure sports courses offer a great balance between practical and theoretical study. You will develop your understanding of sports coaching and leadership as well as develop your practical skills in a range of adventure sports.

There's also the opportunity to study industry-recognised qualifications alongside our Level 3 Diplomas – helping you stand out when it comes to job hunting!

Level 1 in Sport and Public Services

A great first stepping stone for anyone keen to work in sports or public services

Level 2 Diploma in Adventure Sports

This one year course provides a great introduction to adventure sports and a pathway onto the Level 3 Diploma

Level 3 Extended Diploma in Adventure Sports (with Diploma and Subsidiary Diploma options)

Equivalent to 3 A Levels this course will put you on the right track for a career in the adventure industry or degree level study

Discover our courses:

 reaseheath.ac.uk/adventure-sports



HEALTH, SPORTS SCIENCE AND PERFORMANCE ACADEMY

PERSONAL TRAINING

SPECIALIST GYM

Enjoy practical sessions in our new fitness studio, specialist gym and sports performance lab



Are you fanatical about health and fitness with the drive to inspire others to achieve their goals? Focus your energy and achieve a rewarding career with our personal training course.

If you want to take your training to the next level and you're looking to become a fully qualified personal trainer or work in an associated active leisure role – this is the course for you.

You will spend half your time enjoying practical sessions in our new fitness studio, specialist gym and sports performance lab, while you work towards gaining recognised qualifications across a range of group and studio class-based exercises.

To give you industry experience and further develop your practical skills, you'll be learning 'on-the-job' with weekly, relevant work placements in local leisure and fitness centres.

If your ambition is to start your own business we'll develop your skills and knowledge in business, marketing, technology, customer service and enterprise and entrepreneurship – giving you a head start in developing a company you can be proud of.

↓ At a glance

Level 3 Diploma in Physical Activity, Fitness and Exercise Science

WHY STUDY PERSONAL TRAINING AT REASEHEATH?

You'll be training in our brand new fitness studio with state-of-the-art class and studio equipment

On completing your course you will be a fully-qualified personal trainer, class instructor and sports massage therapist

After leaving college you could walk straight into employment at a fitness and leisure centre or sports club, or set up as a self-employed trainer

You can keep your finger firmly on the pulse of what's trending in fitness by training in our new studio. You'll be introduced to studio cycling, functional training, boxercise, step, kettlebells, fit ball and exercise to music

You will gain relevant experience by working with clients from across the college – including our sports academy and public services students – and with members of the public

Our business modules will give you the skills to set up and run your own small business – so you'll be fully-equipped to take the industry by storm!

Where could your career take you?

On completing your course you'll be a fully-fledged personal trainer with all the qualifications required to apply for roles in the fitness industry. You could choose to work for a fitness organisation or set yourself up in business.

If you fancy being your own boss, self-employment offers many lifestyle benefits such as increased flexibility and variety.

Freelance personal trainers usually charge an hourly rate and often rent space in a local gym or train their clients by visiting them at home – some even develop their own facilities.

Some popular career choices include:

- Personal trainer
- Fitness instructor
- Sports massage therapist
- Sports fitness coach
- Activity leader
- Leisure centre manager
- Class instructor
- Teaching
- Associated roles in the active leisure industry

As a self-employed personal trainer, you could earn an hourly rate of between £20–£40. Experienced instructors with high-profile clients can earn up to £50–£100 an hour

Student profile

Sammy Beresford

Level 2 Diploma in Physical Activity, Fitness and Exercise Science

School: Brine Leas School, Nantwich

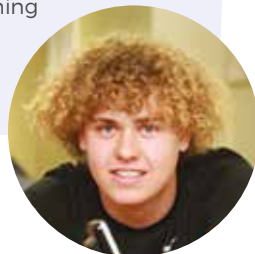
Next step: Level 3 Diploma in Personal Training

Ambition: Personal trainer for motocross riders

"Motocross is my passion. I've been competing for over eight years and I'm currently at World Championship level. This year I've been taking part in the European Championship league in the 125cc class, which has meant competing in France, Germany, Holland and Britain.

"The sport is extreme and exciting but very demanding physically, so I work on my own fitness daily. Learning how to use circuit training correctly at Reaseheath's gym and understanding how to pass this knowledge onto clients has been very useful.

"Although I compete every weekend I don't have any trouble combining my sport with studying, and my lecturers are really supportive."



Train with us

You'll be training in our new fitness studio, part of a £6 million investment into our sports facilities, which has a floor to ceiling mirrored wall and a brand-new studio with class equipment including:

- Olympic standard weight lifting platform
- 10 rear wheel spin bikes
- A range of kettlebells from 8kg-25kg
- Modifiable barbells for muscular endurance training and class-based exercises
- Step boxes for group step classes
- Stability and bosu balls to enhance core strength
- Weight bags
- Plyometric boxes
- Small weight dumbbells
- Battleropes and tyres
- New forms of training including grippers

Our state-of-the-art gym has all the equipment you'd expect to see at a professional football club in a small, friendly environment:

- Cardiovascular machines – treadmills, cross trainers, upright bikes, studio bikes and an arm crank
- Resistance machines covering full body
- Free weights
- Cable machine
- Smith machine
- Olympic standard weight lifting platform
- Functional training equipment

Gain the advantage

As part of your main qualification you will get the chance to work towards a range of additional awards which is great for your CV and your professional development.

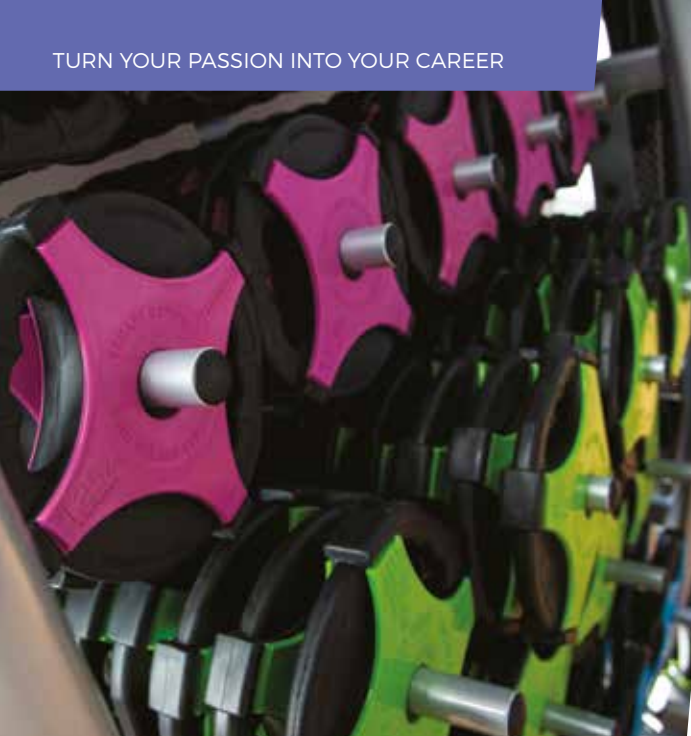
There's no doubt that additional qualifications enhance employability – in fact, many fitness centres require class as well as gym qualifications and strongly encourage ongoing personal and professional development.

You could work towards some of the following qualifications:

- Adolescent training – become qualified in how to train 11-16 year olds
- Health qualifications – awareness of the negative affects of lifestyle factors e.g. smoking and drinking on fitness performance
- Studio cycling
- Kettlebells
- Suspended movement
- Circuits
- Sports massage

In addition to our football academy students, we have strong links with Crewe Alex FC and their development players take part in training at Reaseheath. You will also be helping to enhance the performance of our sport academy players by creating individualised training programmes and providing sports massage therapy.

You'll develop your coaching skills by helping to run fitness sessions and bootcamps for our public services students and give them the stamina to achieve the fitness levels required for entry fitness tests into the uniformed public services.



Test yourself

You can put your competitive streak to the test by taking part in the WorldSkills UK personal training competition. You'll go head-to-head with other students from across the country to challenge your fitness level and ability.

You will get the chance to join the UK's top fitness organisations at Body Power Expo in Birmingham and benefit from all that this giant exhibition has to offer. The exhibition showcases all the very latest developments in nutrition, sportswear and clothing, training and equipment. This event is great for networking – you'll even be in the company of fitness celebrities!

You can also get plenty of hands-on experience by visiting local CrossFit gyms and various leisure and fitness centres in the area.

Get ready for industry

To improve your employability skills, you will complete a relevant work placement once a week across two years. Many students go on to secure full time or part time employment at the leisure and fitness centres where they spent their placement.

You will build your customer service skills by helping to run our commercial sports facilities and working with the public and academy players – all invaluable work experience for your future.

Industry view

Adam Brigham

MSc, Coach

"A career in personal training can be highly rewarding. Working with different people to achieve their goals and delivering a selection of exercise classes offers variety to the job. This is a challenging environment with plenty of opportunities for those who are self-motivated, organised and enthusiastic about health and fitness."

Our courses

Our Level 3 Diploma in Personal Training is in association with Active iQ, the UK's leading awarding body for the active leisure sector. Perfect for those just starting out or for career changers, this course will give you the skills, knowledge and qualifications required for a successful career in the personal training and fitness industry.

Level 3 Diploma in Physical Activity, Fitness and Exercise Science

This two year course is ideal if you're ambition is to become a fully qualified personal trainer

Discover our courses:

 reaseheath.ac.uk/personal-training



HEALTH, SPORTS SCIENCE AND PERFORMANCE ACADEMY

PUBLIC SERVICES

DEVELOP

Learn communication, leadership and teamworking skills with an understanding of legal systems

Do you like a personal challenge? Stand out from the crowd with our public services courses.

If you feel passionate about helping those in your community or further afield and you enjoy adventurous activities as part of a close-knit team, a career in the public services could be right up your street!

Our courses are designed to prepare you for entry into the public services sector and will give you the experience, the determination and the fitness levels you'll require.

We'll help you to develop your communication, leadership and teamworking skills and give you an understanding of our legal systems and how legislation is applied to current global situations.

If your future lies in helping others, our public services courses could be the gateway to a challenging and hugely rewarding career!

↓ At a glance

Level 1 in Sport and Public Services

Level 2 in Public Services

**Level 3 Extended Diploma in
Public Services (with Diploma and
Subsidiary Diploma options)**

WHY STUDY PUBLIC SERVICES AT REASEHEATH?

Receive tailor-made fitness training in our high specification gym to prepare you for entry into the uniformed services

Gain invaluable advice from industry professionals such as police dog handlers, prison officers and custom and excise personnel

Learn about the impact of war and conflict during our study tour to Europe

Enjoy adventurous training activities such as canoeing, bushcraft, land navigation and rock climbing

Be involved with a police video training exercise, get plastered with mud during a residential Army taster camp and join a simulated house fire search at our local fire and rescue services HQ

Go behind-the-scenes at the Houses of Parliament and take part in law making workshops; visit Safety Central and experience how prisons work

Where could your career take you?

Many of our students go on to have successful careers in the Police, the Royal Navy, the Royal Air Force, the Royal Marines and in the prison service. Your course is also a springboard to higher level study and you could progress onto our Higher National Diploma in Public Services here at University Centre Reaseheath.

If you're planning your next steps, there are plenty of exciting career options in the public services sector waiting for you:

- Armed services
- HM customs
- Police
- Fire and rescue
- Prison service
- Paramedics
- Forensic science
- Criminologist

There are currently over 150,000 full-time trained and untrained personnel working in the armed forces

DID YOU KNOW?

There are over 200 roles in the British Army and over 50 roles available in the Royal Air Force

Former student profile

Betty Evans

Current job role: Special Constable with Cheshire Constabulary

Previous courses: Level 3 Extended Diploma in Public Services; Community Policing and Criminal Investigations degree with University of Chester

"Public services is a course recognised by the police force and officers within Cheshire Police have links with Reaseheath's public services department.

"My course helped me to progress in my career choice. I learned so much from my tutors and after I graduated they were there to advise me. They offered assistance with my university application and helped me to get onto the course I always wanted to do."



Student profile

Toni-Ann Macvicar

Level 2 Extended Certificate in Public Services

School: The Winsford Academy

Next step: Job as lifeguard

Ambition: Coastguard

"I was attracted to public services because I want to help other people.

"My nephew nearly drowned during a family beach trip. It made me realise what an amazing service the coastguard rescue teams provide and I decided I'd like to join them.

"I'm studying for a lifeguarding qualification to add to my Level 2 in Public Services, then I'm planning to find a job at a local swimming pool and from there work my way up.

"I feel confident because I've had work experience at a primary school during my course, and I've also done some training with the local fire and police services."



Student profile

Ash Thorpe

Level 3 Diploma in Public Services

School: Weaverham High School

Next step: BTEC Level 5 Higher National Diploma in Public Services, University Centre Reaseheath

Ambition: Police officer

"I did my Level 2 in Public Services before moving to Level 3 and I've enjoyed the whole of the three years.

"Although there's a greater workload and higher expectations at Level 3 it's more flexible, so I've been able to re-sit my English GCSE and get better grades.

"The course is very wide-ranging and prepares you well for studying at degree level or getting a job. It's not all classroom based, we've done outdoor sports like sailing, and canoeing, joined an army camp and taken part in police riot training.

"We went to Krakow in Poland as part of our battlefields studies. Visiting Auschwitz was a new experience and one which I won't forget."



Where you'll be studying

Our campus offers you a range of first-class facilities and resources both inside and outside of the classroom.

As a public services student, you'll get to enjoy a range of challenging outdoor activities such as canoeing, bushcraft, land navigation and rock climbing and even receive tailor-made fitness training in our £6 million specialist Sports Science and Performance Academy.

Our expert staff will help you to prepare for the entry fitness tests which are common in the public services. Our high specification training gym is equipped with everything you'd expect to find in a professional gym including TechnoGym equipment and an Olympic lifting platform.

Your Reaseheath Experience

You will get access to valuable work experience with our industry partners through taster activities, and residential courses.

You'll also receive talks and demonstrations from a wide range of visiting professionals such as custom and excise officers, police dog handlers and prison officers to make sure you're thoroughly informed about your career options.

Our range of exciting study tours will help you to learn about the impact of war and conflict under terror regimes with tours to the battlefields of Normandy or to Auschwitz Concentration Camp in Krakow, Poland.





Community spirit

Last year, 35 of our public services students achieved National Citizen Service Awards for organising community projects which raised over £700 for charities such as St Lukes (Cheshire) Hospice, Hope House Children's Hospices and the Shine Bright Foundation which funds research into breast cancer.

Employability

You'll gain valuable on-the-job experience with work placements at relevant organisations. You can also gain additional qualifications such as National Citizen Service awards, Duke of Edinburgh awards, animal handling and sports awards or sign up for the other training opportunities we offer.

Our courses

Prepare yourself for a career in the uniformed services with a Reaseheath Public Services course. Explore interesting topics such as citizenship, the impact of war and crime whilst improving your fitness through both gym-based and outdoor activities. Our two year Level 3 Extended Diploma course is the equivalent of 3 A Levels and gives you the required UCAS points to progress on to degree level study.

Level 1 in Sport and Public Services

A great first stepping stone for anyone keen to work in sports or public services

Level 2 in Public Services

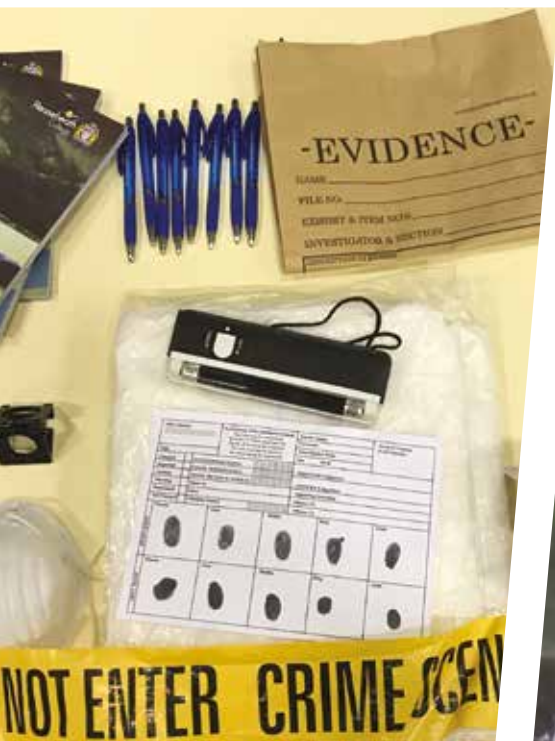
If you like a challenge and want to combine your ambition for a career in the public services with outdoor adventure, then this is right starting point for you

Level 3 Extended Diploma in Public Services (with Diploma and Subsidiary Diploma options)

If you're keen to start your career in the uniformed public services, this advanced level course is a great way to prepare you for employment

Discover our courses:

 reaseheath.ac.uk/public-services



HEALTH, SPORTS SCIENCE AND PERFORMANCE ACADEMY

SPORT

SPECIALIST GYM

Train in our specialist gym which is furnished to the highest specification with TechnoGym equipment

Are you passionate about sport? Make a career in the sports industry your goal.

The UK sports industry is massive. Whether we're playing it, watching it or talking about it – sport is a big part of our everyday lives.

If your sights are set on a career in sport, our courses will give you the qualifications employers want and improve your own sporting ability.

Learning in our state-of-the-art Sports Science Lab with over £40,000 worth of equipment, you will study the advances in sports science and technology which make this industry so fast paced.

You'll also train in our specialist gym which is furnished to the highest specification with TechnoGym equipment as used by England's finest footballers at St George's Park, home of the Football Association.

Our expert staff will give you the advantage by developing the scientific knowledge, the skills and the hands-on experience you'll need to fuel your career. You will explore what it takes to develop elite athletes – from performance analysis and testing, to nutrition and psychology.

If you want a rewarding career doing what you love best – you've come to the right place!

↓ At a glance

Level 1 in Sport and Public Services

Level 2 Diploma in Sport

Level 3 Extended Diploma in Sport (with Diploma and Subsidiary Diploma options)

WHY STUDY SPORT AT REASEHEATH?

Raise your game by gaining unique practical experience in our specialist Sports Science Lab

Get the chance to test elite athletes including Crewe Alexandra FC's first team players and local and international cyclists, triathletes and runners

Perfect your skills in football, rugby, netball and basketball or try out less mainstream sports like trampolining, volleyball and handball

Be part of the action by joining our college football teams (men's and women's) or our rugby and netball teams – all of which compete in the North West Association of Colleges (AoC) Sports Leagues

You'll complete relevant work experience thanks to our links with leading sports clubs and allied professionals

Enhance your CV and study a range of additional qualifications including the FA Level 1 in Coaching Football Award

Where could your career take you?

Our sports courses are designed with your career in mind. Whether your aim is to enter the workplace or to use your course as a springboard to higher-level study, we'll make sure you get the training you need to succeed.

Sport is a growth industry and offers plenty of career opportunities:

- Sports nutritionist
- PE teacher
- Sports coach
- Strength and conditioning coach
- Referee
- Sport physiologist
- Sports psychologist
- Sports scientist
- Sports therapist
- Work in the fitness and leisure industry
- Progression to our Foundation Degrees in Sports Coaching and Fitness and Health

Average annual salaries in this sector range from £18,564 for a fitness instructor, £24,000 for a full time community football coach and up to £48,000 for a senior sports psychologist

DID YOU KNOW?

It's estimated that the sport industry creates over 400,000 full time equivalent jobs – that's 2.3% of all jobs in England!

Student profile

James Adamson

Level 3 Extended Diploma in Sport Performance

School: Madeley High School, Staffordshire

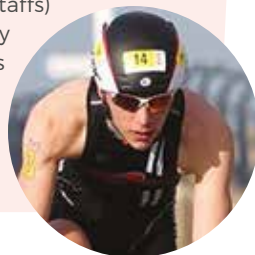
Next step: Degree in Sports and Exercise Science

Ambition: Elite athlete

"I've been competing in triathlons for seven years and this year qualified to represent Great Britain and also to compete at the 2019 European Triathlon Union Multisport World Championships in Spain.

"I'm in the under 20s category, but I hope in the future to be racing on the world stage – hopefully in the Olympics.

"I chose Reaseheath because I'd heard the course was good and because the gym has professional standard equipment. I train with Newcastle (Staffs) Triathlon Club and on my own for around 20 hours a week, so it's great to learn and socialise with students with the same interests."



Student profile

Danny Gibson

Level 2 Diploma in Sport

School: Leftwich High School, Northwich

Next step: High level competition experience

Ambition: Professional golfer

"I completed my Level 2 Diploma in Sport so I could pursue my passion for golf. My ultimate aim is to play professionally and what I've learned on my course will certainly help me.

"I have been playing golf competitively at county level for over six years and compete in national and international tournaments including the Spanish Open Championships.

"Being a sports student at Reaseheath has enabled me to improve my golf and has given me a better understanding of the importance of good nutrition and the mental preparation you need to become an elite athlete."



Crewe Alexandra Football Academy

If you want to turn your passion for football into a career then why not join our football academy, in association with Crewe Alexandra FC. This unique course offers you the opportunity to play football regularly whilst studying for a Level 2 or Level 3 Sport Diploma. You'll benefit from:

- Over 10 hours of coaching and football development per week with UEFA licenced coaches and ex-professionals
- Player reviews to develop your performance
- Competitive fixtures
- Technical and tactical sessions
- Gym training
- Pre, mid and post season fitness testing
- Sports massage sessions and much, much more...

Train with us

We've raised the bar with our £6 million Sports Science and Performance Academy, so you'll have access to some of the very best facilities and resources in the country. Part of our new Technology Park, our state-of-the-art sports hub contains a 3G international standard floodlit rugby pitch and an all-weather multi-use games area (MUGA). There is also a four-court sports hall with separate changing and shower rooms along with accessible facilities.

You'll benefit from the £40,000 worth of hi-tech equipment contained in our dedicated sports science lab. Students and professional athletes alike are assisted to achieve their training goals by using our altitude chamber, bioelectrical impedance equipment (used to analyse body fat percentage), Cos-Med respiratory chamber with updated treadmill and sports massage equipment.

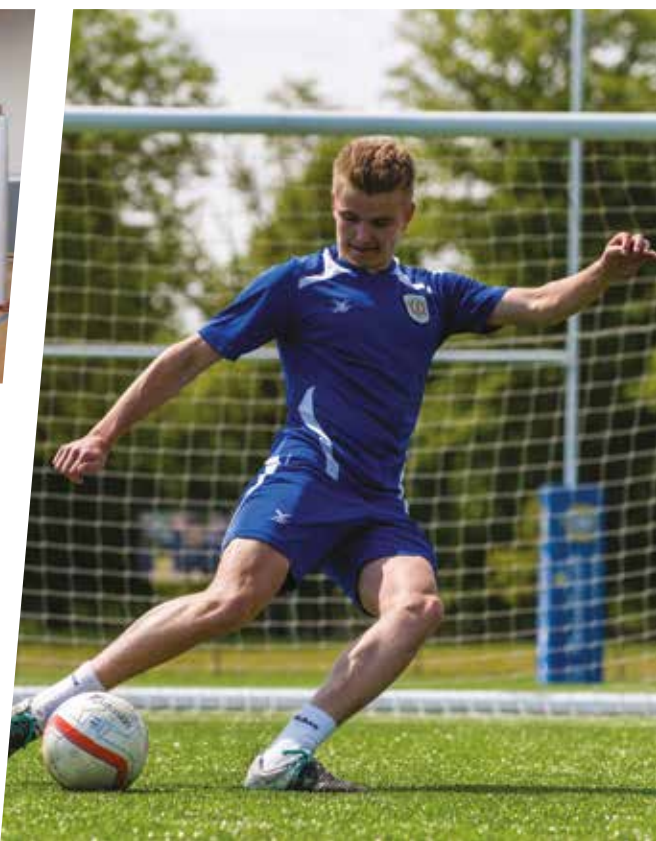
Our fantastic training gym is equipped with everything you'd expect to find in a professional gym including TechnoGym equipment and an Olympic weight lifting platform.

Get ready for industry

Our dedicated team of staff are all actively involved in the industry with specialisms including sports therapy, coaching and strength and conditioning. They will help you to develop a strong set of transferable skills, so you stand out from the crowd in the jobs market.

You'll also get the chance to test elite athletes in our ground-breaking Sports Science Lab including first team players from Crewe Alexandra FC and national athletes such as triathletes and cyclists.

You'll get plenty of work experience with our industry partners and benefit from visits to sporting headquarters and leading venues. Many of our students also gain work experience with coaching companies at local schools – this looks great on your CV and it can lead to paid work.



Test your skills

You can improve your performance in sports like football, rugby, netball and volleyball. We also offer other sports such as trampolining, touch rugby and handball to name but a few.

You can sign-up for one of our college teams and compete in Association of College (AoC) Leagues or take your training to the next level by joining our Women's or Men's Football Academies or the Ian Woosnam Golf Academy.

Last year our rugby team finished in third place in the North West AoC Sports League table and they claimed runners-up position in the Regional 7's Tournament.

Gain the advantage

Alongside your main qualification you will get the chance to work towards a range of additional awards which are great for your professional development. You can develop your coaching skills with FA level 1 coaching qualifications and work towards other National Governing Body awards.

You will build your industry knowledge and boost your career prospects with our study tours and visits. Our very popular study tour to Spain will allow you to experience international sports culture by visiting major sports facilities and by playing against local Spanish teams.

Our courses

Turn your passion for sport into a career with our sport diplomas. Through a combination of theory and practical classes, you'll learn about the science and physiology of sport whilst developing your understanding of a wide range of sports activities. If your goal is to play football or golf on a professional level you could join one of our academies.



Crewe Alexandra Football Academy and the Ian Woosnam Golf Academy offer additional coaching sessions and a tailored training programme alongside your diploma studies at both levels 2 and 3

Level 1 in Sport and Public Services

A great first stepping stone for anyone keen to work in sports or public services

Level 2 Diploma in Sport

This one year course provides a great introduction to sports and a pathway onto the Level 3 Diploma

Level 3 Extended Diploma in Sport (with Diploma and Subsidiary Diploma options)

Equivalent to 3 A Levels this two year course will put you on the right track for a career in the sport industry or degree level study

Discover our courses:



reaseheath.ac.uk/sport

DID YOU KNOW?

6.2 million adults and
3.3 million children
receive coaching in
England every year

RURAL BUSINESS AND NATIONAL FOOD ACADEMY

BAKERY, PÂTISSERIE AND CONFECTIONERY

PRACTICALLY BASED

Spend the majority
of your time at college
working in our
bespoke bakery

Turn your love for bakery and pâtisserie into a rewarding career.

If you have a passion for pâtisserie or just love to bake, studying at Reaseheath is the perfect way to develop your skills.

What's particularly great about our bakery courses is that they are all primarily practically based, that means you'll spend the majority of your time at college working in our bespoke bakery.

Our facilities are the same as you would expect to see in industry, and they include a breadmaking room, pâtisserie area, chocolate room and cake decorating room. From baking in our industrial sized ovens and preparing products for sale on campus to creating bespoke baked goods, confectionery and chocolates, no two days in the bakery industry are ever the same.

↓ At a glance

Level 1 Foundation in Food Industry Skills

Level 2 Diploma in Professional Bakery

Level 3 Diploma in Professional Bakery

Level 2 Baker Apprenticeship

Level 3 Advanced Baker Apprenticeship

WHY STUDY BAKERY, PÂTISSERIE AND CONFECTIONERY AT REASEHEATH?

You'll be taught by supportive and professional staff, all of whom have a range of industry experience

Explore new product development ideas and get creative in our state-of-the-art food centre

Enhance your CV by completing additional certificates in food safety and health and safety

Learn modern and traditional methods in your cake decorating lessons

Join study trips to companies across the UK, ranging from behind-the-scenes visits to large industrial bakeries to lectures from internationally recognised cake designers

Meet influential pâtisserie chefs and bakers during your work placement

Where could your career take you?

Bakery is one of the biggest and fastest growing areas of the food and drink manufacturing industry. Every day, millions of loaves of bread and baked goods are made and sold around the world. In this sector, you'll never stop learning and developing your skills.

There's plenty of opportunities to turn your passion for puddings, pâtisserie and all things baking into a rewarding career. Here's an idea of what some of our students have gone on to do:

- Artisan baker
- Cake decorator
- Bakery operative
- Pâtisserie chef
- Bakery engineer

With salaries starting at around £16,000 as a bakery operative, this is a great starting point to put your skills into working practice in the industry

DID YOU KNOW?

The UK bakery market is worth £3.6 billion and is one of the largest markets in the food industry – made up of large plant bakeries, instore bakeries and craft bakers

Former student profile

Sophie Hine

Current job role: Owner, Lavender and Lace Tearoom, Whitchurch

Previous courses: Level 2 and Level 3 Diplomas in Professional Bakery, 2016

"Reaseheath gave me the skills I needed to start my own business. From the practical experience working in the professional bakery to gaining additional qualifications such as food hygiene and health and safety, I use so much from everything that I learnt at Reaseheath each day at work. I started college and didn't know anyone, after two years there I made some of my best friends, really built up my confidence, and had a really great time as a student."



Student profile

Steph Corfield

Level 3 Diploma in Bakery and Pâtisserie

School: University College Isle of Man

Next step: Degree in Bakery and Pâtisserie at Reaseheath

Ambition: Cake shop owner

"I've always wanted to study bakery and I chose Reaseheath because of its great reputation and specialist food facilities. The practical sessions are the best. We've made different breads, cakes, tarts and pastries and I've also developed good skills in cake decorating.

"I enjoyed visiting the Cake and Bake Show in Manchester and we've been to commercial bakeries too. I also had a great work experience in a family run bakery making bread, doughnuts, eclairs and pies.

"I love living in. Reaseheath has such a friendly community and I've made a lot of new friends. The lecturers are very good too."



Student profile

Abi Donaldson

Level 2 Diploma in Bakery and Pâtisserie

School: Rivington and Blackrod High School, Bolton

Next step: Level 3 Diploma in Bakery and Pâtisserie, then degree in Bakery and Pâtisserie at Reaseheath

Ambition: Cake shop owner

"I came to Reaseheath because I knew I wanted to study bakery and I realised that it was the best college for me. There are great facilities here compared to other colleges, particularly the professional equipment and experienced staff.

"I like the creative, arty side of bakery, particularly cake decorating, but I enjoy learning about the science of baking too. Food technology was one of my favourite subjects at school.

"This course is very practical, which I prefer to a mainly academic course. You have lots of freedom to use your creativity, and everyone is really friendly."



Where you'll be studying

From full-scale chocolate manufacture to proving, pastry lamination, mixing and product bake off, our small-scale commercial bakery has all the capabilities and diversity expected within large-scale manufacturing. This means when you're working in the bakery, you are getting real life experience of working in an industry setting, vital preparation for going into employment.

What's unique about our food centre is we're British Retail Consortium Grade A (Issue 7) accredited. We are the only educational institution in the UK to be awarded with this BRC food safety standard, so we're well respected throughout the industry. It also means that when you make products on-site, you'll have the chance to sell them at special events and throughout the year on campus.

From classroom to competitions

You'll learn a host of skills during your time as a bakery student. From the basics like making the perfect sponge cake, decorating it using your newly found skills in cake decorating, using sugar paste, royal icing and modelling paste, to designing biscuits, chocolates and pastries – there's so much variety!

Industry links

One of the great things about studying professional bakery at Reaseheath is our key industry links and partners. We have a great relationship with Renshaw's Academy, where students have the chance to take part in professional training, including a modelling course.

All bakery students will complete relevant work placements with a range of companies, from small scale artisan bakeries including Hurst Village Bakery, Greenhalghs Bakery, Slatterys chocolatiers, to large scale commercial bakeries including Bakkavor.

Industry view

Andrew Dale

Executive Pâtisserie Chef, Signature Living

"The importance of learning any trade correctly is vital to a long career. Pâtisserie is constantly evolving so you need to stay on trend and develop your skills to keep a business fashionable and the people coming through the front door.

"None of this is possible unless you have the correct building blocks at the learning stage of your career. Reaseheath gives you the best learning experience possible, through its state-of-the-art facilities and supportive staff. This enables learners to be given the best chance of a career, but most of it takes desire which is the last ingredient for success and that comes from the individual."





Earn while you learn

By doing a bakery apprenticeship you'll benefit from both classroom and on-the-job teaching – whilst getting paid to train! You'll start on around £11,000 in your first year, but many bakers are paid a premium for their skills, so it's likely you'll earn more as you progress through your career. Apprenticeship graduates can look forward to an average starting salary of £26,000.



Our courses

If you're serious about a career within the pâtisserie or bakery sector, then look no further. Our bakery courses will equip you with all the skills and knowledge needed to progress into a successful career in the industry.

Whether your ambition is to start your own bakery business or gain employment within a commercial bakery, the experience you'll gain from working in our industry standard commercial Food Centre will put you in good stead.

Level 1 Foundation in Food Industry Skills

If you're interested in food, this is a great way to gain some basic skills in food preparation

Level 2 Diploma in Professional Bakery

Thinking of a career in bakery? This introductory course is a great starting point

Level 3 Diploma in Professional Bakery

An in-depth technical course, ideal for those who are serious about the science and skill behind the professional bakery industry

Level 2 Baker Apprenticeship

Work in a traditional craft bakery, large scale commercial bakery or specialist retailer or supermarket whilst studying one day a week at college

Level 3 Advanced Baker Apprenticeship

Develop in-depth knowledge and expertise in a range of bakery techniques with this apprenticeship

Discover our courses:



reaseheath.ac.uk/bakery

RURAL BUSINESS AND NATIONAL FOOD ACADEMY

BUSINESS AND EVENTS MANAGEMENT

INTERNATIONAL

Develop your
business knowledge
on study tours to
London and Berlin



Unleash your entrepreneurial spirit with our inspirational courses!

We are fully-invested in your future. Our professional and dedicated staff bring to the table a wealth of industry expertise and they will instill the mindset you need to launch a successful business or to climb the ladder within a blue-chip company.

As a budding entrepreneur, we will help you to develop the skills to spot a winning business opportunity and the know-how to grow your vision by understanding the needs of your consumer. Independent study projects will help you to recognise your strengths and interests while building self-confidence in your own abilities.

If you see your future in the dynamic and fast-paced sector of event management, you can join like-minded others in running events on and off campus.

There's lots of opportunities to let your skills shine; from organising student socials and charity fundraisers, to working at prestigious public and international events.

With your drive to succeed and our industry-focused courses – the world can be your oyster!

At a glance

Level 2 First Extended Certificate in Business

Level 3 Extended Diploma in Business (with Diploma option)

Level 3 Extended Diploma in Enterprise and Entrepreneurship (with Diploma and Extended Certificate options)

Level 3 Extended Diploma in Events Management (with Diploma option)

WHY STUDY BUSINESS AND EVENTS AT REASEHEATH?

Realise your ambitions with work placements to develop your industry experience and build a CV with the power to impress!

Learn how key visitor attractions operate during educational visits to venues such as Chester Zoo, JCB and the Houses of Parliament

Volunteer at prestigious events such as Bolesworth International Horse Show and CarFest to gain experience and get unique access to networking opportunities

Put your new-found skills to the test by entering Young Enterprise competitions and even launch your own business

Maximise your potential with top-tips from inspirational speakers during our popular study tour to the Business Live Conference in Disneyland Paris and develop your business knowledge on study tours to London and Berlin

All of our level 3 business and events diplomas are the equivalent of three A Levels and will give you the UCAS points needed to progress on to degree level study

Where could your course take you?

Many of our students go on to make a name for themselves in major companies - while others have set up successful businesses in their own right.

The world of business and events management is a varied and exciting place and there are plenty of career opportunities for you to choose from in areas such as recruitment, the hospitality and charity sectors, accountancy, marketing and human resources to name but a few.

Some popular career destinations include:

- Business manager
- Event manager / coordinator
- Accounts and finance
- Marketing manager
- Human resource management
- Recruitment manager

You can also progress to study with us at degree level or onto a higher level apprenticeship in business, sales or commercial enterprise.

Our business and events management students have gone on to study at other universities such as the University of Birmingham, University of East Anglia, Liverpool John Moores University, Nottingham Trent University and Manchester Metropolitan University.

The average salary for an entry-level events co-ordinator is £19,500

Former student profile

Victor Parker

Previous course: Level 3 Extended Diploma in Business 2015

"Reaseheath gave me the opportunities I needed to become a future leader through interactive and hands-on activities such as Young Enterprise and Career Development. The atmosphere and community feel helped me to gain confidence and I have utilised this to make ambitious education and career jumps. I was able to support other students, and this helped me to progress into full leadership and project management roles at university.

"I graduated with a BA (Hons) and a Level 7 Chartered Management Institution (CMI) degree and I did a year's work experience in a management role. Since graduating, I've been approached by businesses such as Dyson, Rolls-Royce, IBM and Virgin about graduate jobs.

"Reaseheath gave me the confidence and the skill set to pursue these opportunities and I am grateful to the staff who believed in us during our studies."



Student profile

Rebecca Penny

Level 3 Diploma in Events Management

School: Bishop Heber High School, Malpas

Next step: Degree or job

Ambition: Hotel event management

"I compete my own horse and I've always been interested in how events are run. I did my work experience in the event office at Bolesworth International and then I volunteered at the five day show to gain extra practical experience.

"I was also on the front desk at a Christmas Fayre which I helped to run at college. It was nice to welcome in so many visitors.

"Reaseheath is very welcoming. I've never missed a day of college because I want to be here. It's a lovely campus with great places to hang out with your friends."



DID YOU KNOW?

7 out of the top 10 jobs held by UK graduates are in the business, sales and HR sector

Managerial roles can command a salary of £30,000 with senior managers and directors earning in excess of £50,000

Ready for business

Our links with key business professionals means you'll gain real industry insight from visiting guest speakers, as well as benefit from work experience opportunities and study tours. We have established links with many major businesses including retail giant John Lewis and online electrical store AO.

You'll also benefit from working with local charities such as St Luke's Hospice and the Neuromuscular Centre in Winsford.

Industry view

Chris Taylor

Captain of Etsy South Cheshire

"As a group of creatives we work closely with the events management students from Reaseheath, who organise and help us to run our Christmas Artisan Market. We outline our basic requirements and they in turn make further suggestions which we take on board to improve the event year-on-year. We are always amazed at how quickly the students learn new skills and how helpful, willing and enthusiastic they are."

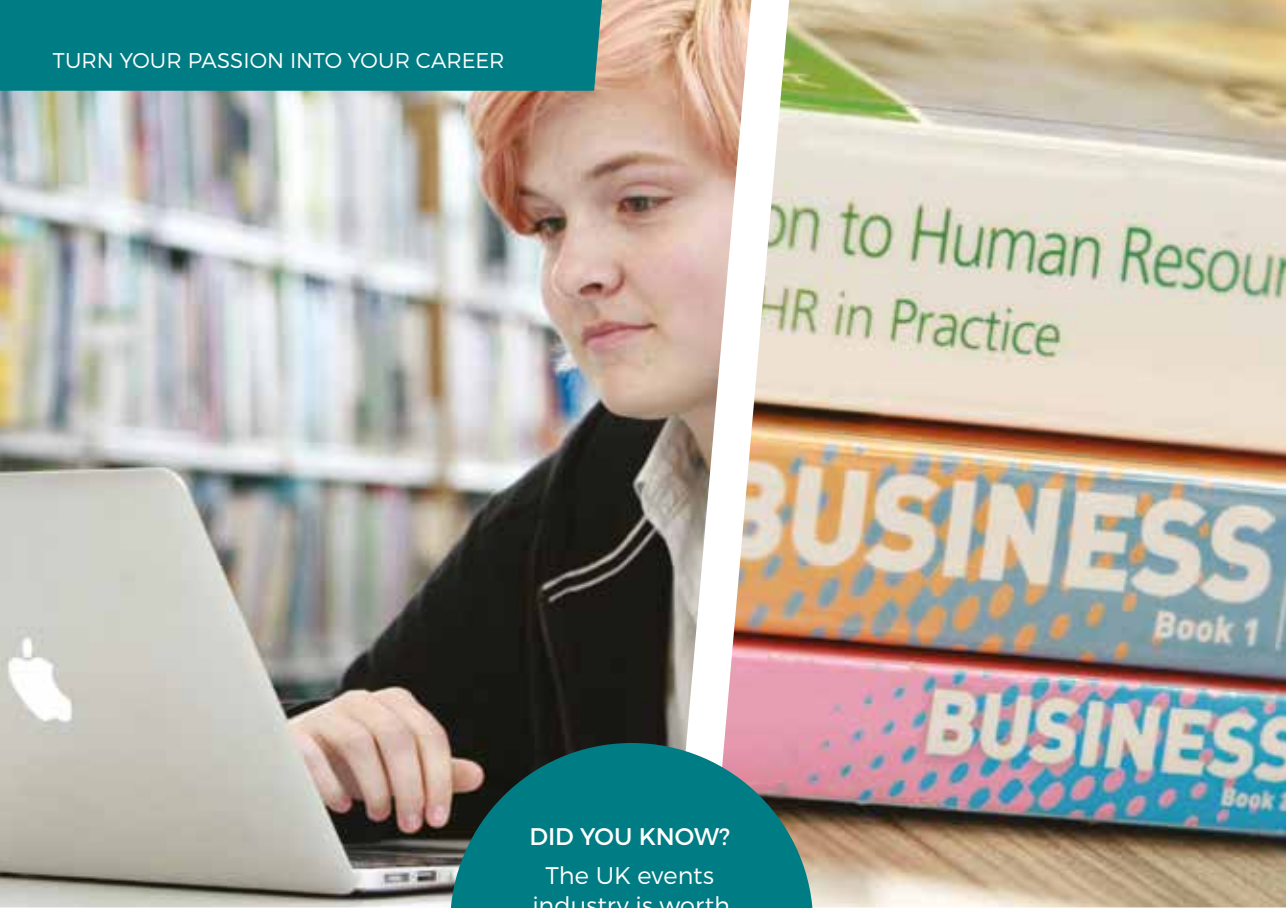


Gain the advantage

Stand out from the crowd by gaining first-hand experience with our study tours and work towards additional awards.

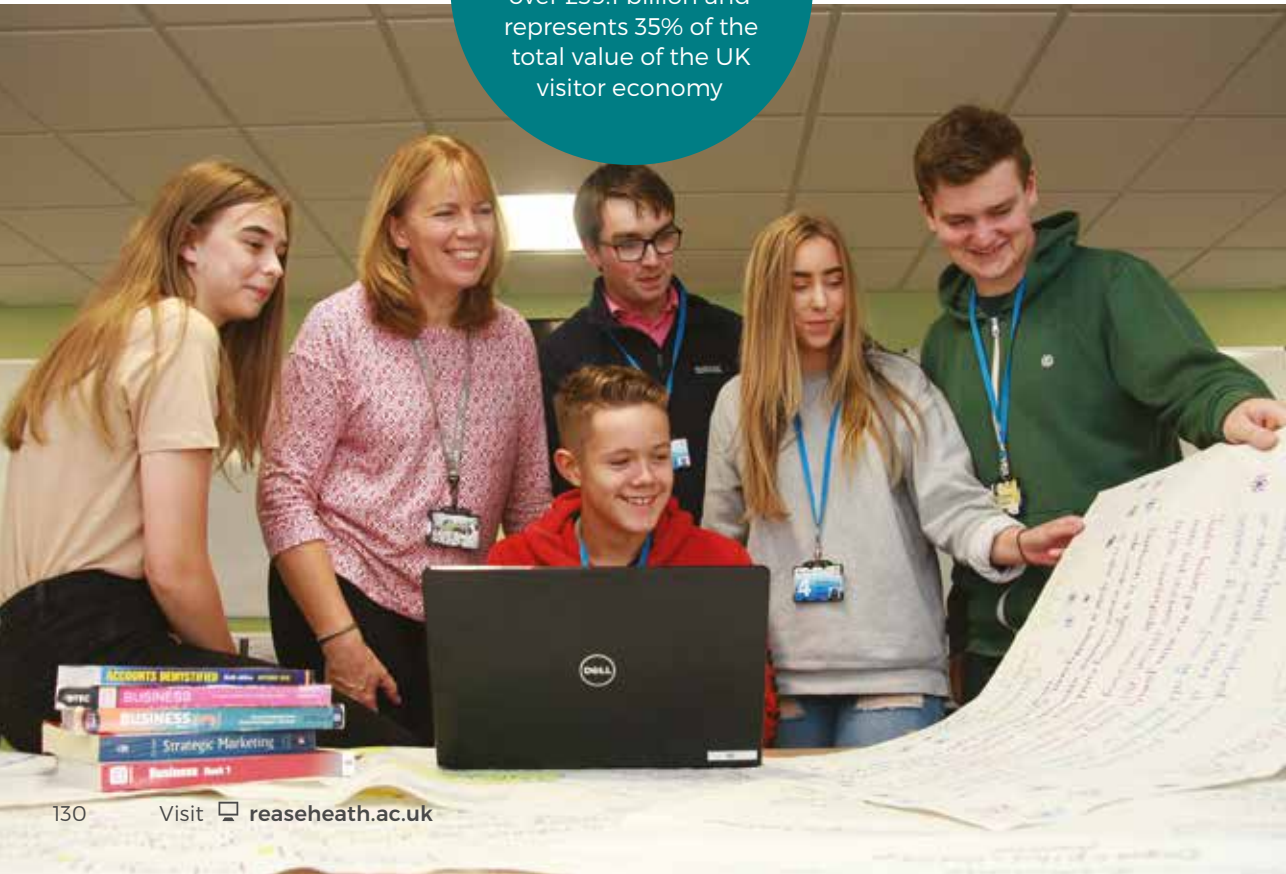
Our study tours will help you to understand how external influences affect business activity and they include a tour of the Palace of Westminster and the Bank of England Museum. You can also help to organise student socials and charity fundraisers and gain work experience at prestigious events.

Alongside your main qualification you can work towards additional awards such as recognised certificates in volunteering and food hygiene. Training for these qualifications looks fantastic on your CV and contributes to your ongoing professional development.



DID YOU KNOW?

The UK events industry is worth over £39.1 billion and represents 35% of the total value of the UK visitor economy



Where you'll be studying

You will be studying in the beautiful, rural setting of Cheshire, just one mile outside the busy market town of Nantwich and in easy access of Manchester, Birmingham, Liverpool and Chester.

Our campus is small enough to retain a friendly, family atmosphere but large enough for you to mix with groups of like-minded students. There's lots of clubs, societies and forums you can join and a lively programme of social events arranged by the Student Association.

Over recent years we've invested over £80 million into our campus to create the best possible environment for learning. Our facilities include a £6 million Sports Science and Performance Academy with a training gym, international standard floodlit 3G rugby pitch, a new sports hall and an indoor climbing wall.



Our courses

Our business and events courses offer a great balance between practical and theoretical study. You'll be encouraged to explore a range of topics whilst gaining real industry insights and experience through study tours, project work, visiting speakers and by undertaking a relevant work placement.

If you're thinking of taking the next step into university, our two year Level 3 Extended Diplomas are the equivalent of three A Levels and equip you with the required UCAS points to progress on to degree level study.

Level 2 First Extended Certificate in Business

A great introduction to a broad range of business functions and processes

Level 3 Extended Diploma in Business (with Diploma option)

Explore the many diverse areas of business such as marketing, accountancy, strategy, human resources and more

Level 3 Extended Diploma in Enterprise and Entrepreneurship (with Diploma and Extended Certificate options)

This course is ideal for young entrepreneurs who have visions of setting up their own business in the future

Level 3 Extended Diploma in Events Management (with Diploma option)

Learn how to coordinate and manage a whole host of events through project-based tasks

Discover our courses:



reaseheath.ac.uk/business

RURAL BUSINESS AND NATIONAL FOOD ACADEMY

FOOD TECHNOLOGY

DEDICATED FACILITIES

Work hands-on in our commercial dairy processing halls and dedicated butchery

Kick start a tasty career with a food technology qualification.

Do you fancy taste testing chocolate or developing flavours for crisps for a living? Some of our students have gone on to become buyers, production managers, food technicians and new product developers. Many work for major brand companies, with salaries which are as sweet as their job titles, starting at around £25,000!

Studying food technology, you'll be part of an exciting industry which is dynamic, fast paced and constantly changing to meet consumer demands. You'll be encouraged to explore every aspect, from trying out new flavours to market research and packaging.

You'll have plenty of opportunity to put the theory you've learned in the classroom into practice by spending time working hands-on in our commercial dairy processing halls and dedicated butchery, bakery and new product development areas.

At a glance

Level 1 Foundation in Food Industry Skills

Level 3 Diploma in Food Technology and Management

Level 3 Food Technologist Apprenticeship

Level 2 and Level 3 in Craft Butchery Retail and Production Apprenticeships

Level 2 and Level 3 Food and Drink Process Operator Apprenticeships

WHY STUDY FOOD TECHNOLOGY AT REASEHEATH?

Compete (and win!) at the biggest cheese show in the world - the Nantwich International Cheese Show

Enhance your CV by completing extra qualifications in key subjects such as health and safety and food safety

The cheeses, ice cream, and other dairy products you've made will be sold on campus and at college events

Join study tours in the UK and abroad, including behind-the-scenes visits to businesses ranging from blue chip companies to entrepreneurial artisans

Our commercial food centre is regarded to be among the best of any college in Europe, so training with us is as close to being in industry as you can get!

Experience working for one of our many regional and national industry partners, including Premier Foods, Sainsbury's, Bright Blue Food, Robinsons or Hovis, when completing your work placement

Where could your career take you?

If you're looking for a course that will open doors to a huge range of career opportunities, then a food technology qualification is the perfect choice.

A career in the food industry will give you a job for life, because at the end of the day we all need to eat!

Jobs range from focusing on the dairy industry, engineering and health and safety roles to new product development, packaging and food production. You might want to specialise in research, marketing or PR, human resources or the retail side of the industry, which is all possible with our food courses.

Here's an idea of the range of job roles you could progress on to:

- Production line operative
- Food logistics
- Buyer
- Food production engineer
- New product development technologist
- Packaging designer or developer
- Quality assurance technician
- Production manager
- Brand manager
- Communications coordinator
- Business development manager
- Marketing executive

The average salary for a food technologist is £43,160

Former student profile

Millicent Blackburn

Current job role: New Product Development for ABP Beef

Previous course: Level 3 Diploma in Food Technology and Management, 2017

"The industry links I gained during my work placement while studying at Reaseheath helped me secure a Degree Level New Product Development Apprenticeship with ABP Food Group. I am currently developing beef and lamb products for customers on behalf of one of Europe's leading food processors. The course has really helped me achieve my ambitions."



Your Reaseheath Experience

Our food technology courses are designed to introduce you to the variety of areas that make up the diverse and ever-growing food and drink industry.

You will learn about food science and microbiology – including the science behind brewing cider, basic butchery skills, business management principles, new product development, dairy science, bakery, food safety and sustainability – all to give you a flavour of life in the food industry.

Beyond the campus there's lots of opportunities to enhance your skills with work placements, trips across the UK and study tours. You'll have the chance to visit breweries, bakeries, food manufacturers and learn from world class experts in the field.

Industry standard facilities

Reaseheath's industry standard Food Centre is the only educational institution in Britain to have been awarded the globally recognised British Retail Consortium Grade A (Issue 7) certification for food safety, so we command huge respect within the industry.

As well as working in our state-of-the-art facilities, you'll also gain experience working with the latest equipment used in the food industry and the department works closely with industry partners, including the likes of Sainsbury's.

Having a close relationship with industry means companies use our facilities to develop new products and undertake trials. This opens up lots of opportunities for you to get involved in a range of projects.

Industry view

John Sorsby

**Head of Commercial for Food
Reaseheath College**

"Wherever possible we encourage clients to interact with our students. If there's an opportunity to get a client involved in a student project, we'll always do that to enhance the student experience."



DID YOU KNOW?

The UK food and drink industry makes up 19% of the total value of UK manufacturing – that's more than aerospace and automotive combined!

Food apprenticeships

The food industry is dynamic, fast-paced and high-tech; not to mention well paid. An apprenticeship is ideal for you if you're looking to go straight into a job, while studying at the same time. There's lots of exciting opportunities for progression and roles that require a range of responsibilities. Our apprentices work for a variety of high-profile companies, such as Müller, Dairy Crest, Arla, Appleby Creamery, Bakkavor and Grant's Butchers.

Student profile

David Steiger

**Level 3 Diploma in Food
Technology and Management**

School: Hilbre High School, West Kirby, Wirral

**Next step: Assistant Pâtisserie and
Bakery Chef, Thornton Hall Hotel**

Ambition: Baker

"I chose to study food technology because I wanted to expand my overall knowledge of the food industry and develop my skills further.

"I've already completed my Level 2 and Level 3 Diplomas in Bakery and Pâtisserie, so by the time I've finished this course I'll have been at Reaseheath for four years. Apart from improving my baking skills, I'm learning more about food science – for instance food hygiene and additives.

"We've also had some great trips to factories and smaller businesses to see how they operate, and I had a really good work experience with a speciality bread and cake wholesaler."





DID YOU KNOW?
The food and drink supply chain employs almost 4 million people and generates £122bn for the economy each year – so career opportunities are only on the up!

Project Eden

A great next step for those passionate about dairy is Project Eden. This is a degree level apprenticeship developed to meet the demands of the dairy industry in conjunction with Reaseheath College. It is designed to develop well-rounded Dairy Technologists with a passion for the dairy industry.

Naboth Tinarwo

Arla Foods

"Reaseheath's Level 3 Food Technology course is the best pipeline feeder into our dairy technology programmes, in particular Project Eden. Arla Foods will continue to look to Reaseheath students to join Project Eden and pursue other technical careers with us because the high level knowledge, skills and behaviours students demonstrate suits our business ambitions."



Megan Edwards

Level 3 Diploma in Food Technology and Management, 2017

Apprentice Food Technologist, Meadow Foods

"Studying Food Technology and Management helped me gain a greater understanding of the food industry as a whole. The modules I studied were so varied, from butchery and bakery, to dairy and engineering, which meant when I came to the end of my course I had a good idea of where I wanted to go next."

"I'm now fortunate enough to be an apprentice food technologist working for Meadow Foods, the largest independent dairy in the UK and studying for a Foundation Degree in Dairy Technology as part of the Project Eden programme."



Our courses

If you're interested in joining a growing industry where the demand for technically qualified staff increases each year, you'll be in good hands as a Reaseheath food student.

You'll be supported throughout your course by our team of experienced and knowledgeable staff who will be on hand to help you achieve your best and ensure you progress into a successful career in the industry, or further study.

Level 1 Foundation in Food Industry Skills

If you're interested in food, this is a great way to gain some basic skills in food preparation

Level 3 Diploma in Food Technology and Management

Develop a broad set of technical skills and knowledge and put yourself in a great position to go straight into employment or to university

Level 3 Food Technologist Apprenticeship

An industry focused qualification ideal for those working in a laboratory, development or factory-based food role

Level 2 and Level 3 Craft Butchery Retail and Production Apprenticeships

On-the-job training will help develop your technical butchery skills

Level 2 and Level 3 Food and Drink Process Operator Apprenticeships

Ideal for those working in food manufacturing, this apprenticeship is tailored depending on your place of work

Discover our courses:

 reaseheath.ac.uk/food

ENGINEERING, TECHNOLOGY AND CONSTRUCTION ACADEMY

AGRICULTURAL ENGINEERING

FACILITIES

Develop your technical knowledge using our £7 million Advanced Agricultural Technology and Engineering (Agri-Tech) Centre

Ecstatic about engines? 'Learn by doing' on our agricultural engineering courses.

The world's population is rapidly expanding, and this generates an ever-growing need to produce more food. As a talented, highly skilled engineer with the industry skills that count, you'll find yourself in high demand when it comes to the jobs market.

As the UK's leading academy for agricultural engineering, we are constantly raising the bar to deliver training in the advanced technology needed to maintain the complex tractors and agricultural machinery used in precision farming.

Based in our £7 million Advanced Agricultural Technology and Engineering (Agri-Tech) Centre, you will develop your technical knowledge and practical ability in the maintenance of agricultural machinery using the latest diagnostic equipment.

If your goal is to work for a top manufacturer as a multi-skilled engineer capable of influencing our future – we've got a course to suit!

↓ At a glance

Level 1 Diploma in Transport Maintenance

Level 2 Technical Certificate in Land-Based Engineering

Level 3 Advanced Technical Extended Diploma in Agricultural Engineering

Technical Baccalaureate in Agricultural Engineering

Level 3 Land-Based Service Engineering Technician Apprenticeship

Level 2 and Level 3 Vehicle Parts (Agricultural) Apprenticeships

WHY STUDY AGRICULTURAL ENGINEERING AT REASEHEATH?

Perfect your diagnostic skills by working on our brand-new running engine rigs

'Learn by doing' in our Agri-Tech training facility with electronic diagnostic equipment, hydraulic training rigs, electronics lab and industry-standard workshops

We have extensive industry links, and this is good news when it comes to your future career prospects. Many of our former students have found work with some of the best manufacturers in the world

Our partnership with market-leading manufacturers means that you'll be learning with state-of-the-art technologically advanced machinery and equipment – including the very latest GPS precision farming technology

Join our European study tour and visit top shows and exhibitions to gain first-hand experience of the latest advances in agricultural engineering technology and manufacturing

Our exciting Agri-Tech facility, new for 2018, was developed in partnership with major agricultural companies such as JCB, Case IH, CLAAS UK and New Holland

Where could your career take you?

The world of agricultural engineering can offer you a range of exciting and rewarding careers. Many of our students find employment with world-class national and international manufacturers such as Case IH and New Holland working in the fields of training and development or technical support. Others choose to work for leading dealerships and progress their career within the company to managerial roles.

Working for a main manufacturer or dealership, you may also be offered global travel opportunities with temporary overseas contracts being common in Australia, Canada and America.

Whatever your goals, our courses can develop the transferrable skills required for a range of careers across many industries.

Some popular career options include:

- Precision farming engineer
- Technical service engineer
- Design and development engineer
- Aftersales technical support specialist
- Technical parts specialist
- Technical sales engineer
- Aftersales technical training
- Test engineer



Former student profile

Ryan Doonan

Current job role: Field Service Technician, CNH Industrial

Previous course: Level 3 Extended Diploma in Land-Based Technology, 2014

"Reaseheath's links with industry helped to further my skills and knowledge – not just through the provision of modern machinery – but also through the contacts I made. On completing my course, I progressed into a paid product support internship at CNH Industrial and this led to a full time role in their product support department."



Student profile

Olly Hewins

Level 3 Advanced Technical Certificate in Agricultural Engineering

School: Knutsford Academy

Next step: Level 3 Advanced Technical Extended Diploma in Agricultural Engineering

Ambition: Contract engineer

"From day one I knew I had come to the right place. You sense that Reaseheath is a good college. Everyone is very welcoming and respectful and the campus is well looked after."

"I went onto the Level 2 Diploma straight from school, and that gave me a good grounding to progress onto Level 3. The highlight this year was our study tour to Germany, Belgium and the Netherlands. It was a very varied experience and we visited some impressive manufacturing centres."

"It was a fantastic opportunity to make international industry contacts and I'm hoping it may lead to a job abroad in the future."



Where you'll be studying

Our Advanced Agricultural Technology and Engineering (Agri-Tech) Centre opened its doors in 2018 following an investment of £7 million and is part of our new Technology Park. Carefully designed to lead the way in training and technology, the purpose-built centre contains £1 million pounds worth of the very latest equipment and resources.

This exciting scheme was developed in partnership with major agricultural companies and it will allow us to deliver next generation skills in precision engineering, precision farming and many other areas.

Our industry standard workshops include practical teaching areas and technical teaching classrooms where you'll work with electronic diagnostic equipment, hydraulic training rigs and in our new electronics lab. The Agri-Tech Centre also houses a showroom where you can experience product launches and industry events.

Your Reaseheath Experience

As an agricultural engineering student, you will have the opportunity to join our annual study tour with visits to European engineering and manufacturing centres of excellence including:

- A factory tour at CLAAS global headquarters and technopark in Germany
- A visit to the test centre of Amazone agricultural machinery manufacturers
- A guided tour with specialist agricultural machinery importer and exporter Koop van der Wal in Holland
- A tour of Case New Holland's impressive factory in Belgium to gain insight into production line manufacturing

You'll also get the chance to visit top agricultural shows and exhibitions, such as LAMMA, to experience the very latest in advanced engineering and computer technology.

Last year, we were the venue for the Red Power Tour hosted by Stamford Agricultural Services Ltd. This national event showcases top-of-the-range Case IH tractors and equipment.

Industry links

We're the preferred training provider for local, national and international companies including JCB, Case IH, CLAAS UK and New Holland. Employers look to us when recruiting and newly qualified engineers are always in demand.

Our Level 3 Advanced Technical Extended Diploma is a unique three-year sandwich course, with a year spent on work placement. Designed in partnership with industry, this nationally recognised qualification offers excellent career progression.

Food for thought: We're part of Agri-Tech West, an alliance of businesses, organisations and educational institutions formed to find ways of producing sustainable food using new technology.

Industry view

Mark Barnes

Technical Support Manager, CNH Industrial

"Our Land-Based Engineering programme is a very successful partnership with great benefits for Reaseheath students, CNH Industrial and its dealers. In product support, we look to recruit people with a great attitude, good fundamental skills and a broad knowledge of land-based equipment. This is what the engineering department at Reaseheath seems very good at producing."

A fully qualified technical service engineer can expect to earn an average starting salary of £28,000-£35,000



DID YOU KNOW?

The UK will recruit
around 87,000 graduate
level engineers per year
over the next 10 years



Earn while you learn

Our engineering apprenticeships have been carefully developed with employers to provide you with 'on-the-job' training while you earn a wage and develop the relevant skills needed to fast-track your career in the agricultural engineering industry.

We provide apprenticeship training for leading national and international companies and these companies donate top-of-the-range machinery and equipment which we use to develop your technical training.

Trained by specialist staff in our fully-equipped workshops, you will attend college in blocks throughout the year. The rest of the time you will be gaining valuable industry experience in the workplace.

See page 150 for more information on our engineering apprenticeships.

Our courses

Whichever course you choose to study, you'll be in good hands. Our experienced and knowledgeable staff, fantastic industry links and state-of-the-art facilities will help give you a flying start to your career in the agricultural engineering sector.

Level 1 Diploma in Transport Maintenance

A great introduction to a range of engineering skills

Level 2 Technical Certificate in Land-Based Engineering

Gain a good grounding and preparation for further learning

Level 3 Advanced Technical Extended Diploma in Agricultural Engineering

The equivalent of 3 A Levels, this course gives you the skills and knowledge for a wide number of jobs or to progress onto a degree



You can study this course over three years completing a one year industry relevant work placement

Technical Baccalaureate in Agricultural Engineering

For high achievers and worth 4.5 A Levels, you'll study a range of engineering-based topics along with Level 3 maths and an extended project

Level 3 Land-Based Service Engineering Technician Apprenticeship

This apprenticeship is studied over 2-3 years block release and is ideal for employed land-based service engineers who wish to further develop their skills and knowledge

Level 2 and Level 3 Vehicle Parts (Agricultural) Apprenticeships

Earn and learn at your workplace whilst studying at Reaseheath on block release

Discover our courses:

 reaseheath.ac.uk/agricultural-engineering



ENGINEERING, TECHNOLOGY AND CONSTRUCTION ACADEMY

CONSTRUCTION



HANDS-ON

Build a range of skills while getting the vital 'hands-on' experience that employers want

Planning your future? There's never been a better time to join the construction industry.

It's boom time for building! If you're inspired by the places where we live, work, travel and play, the construction industry is looking to recruit young people with recognised trade qualifications and the practical skills that count.

As a Reaseheath construction student you can build a range of skills in three distinct trade areas – brickwork, joinery, or plastering, while getting the vital 'hands-on' experience that employers want. Our industry-led full time and apprenticeship courses are the perfect foundation for a rewarding career as you will learn your craft alongside professional tradespeople.

If you want to make a lasting impact by building functional environments for an expanding population – your future starts with us!

↓ At a glance

Level 1, 2 and 3 Diplomas in Brickwork

Level 3 Diploma in Construction and the Built Environment

Level 1 Diploma in Floor and Wall Tiling

Level 1, 2 and 3 Diplomas in Joinery

Level 1 Diploma in Multiskills

Level 1 Diploma in Painting and Decorating

Level 1, 2 and 3 Diplomas in Plastering

Level 2 and Level 3 Construction (Carpentry and Joinery, Brickwork and Plastering) Apprenticeships

Level 2 Property Maintenance Operative Apprenticeship

WHY STUDY CONSTRUCTION AT REASEHEATH?

Learn your trade in 3 fantastic, spacious workshops that are all stocked with top quality equipment

Benefit from cutting-edge resources and modern materials thanks to our partnerships with leading suppliers and allied businesses

You'll be supported by our team of highly qualified staff who have extensive industry experience

94% of our construction students progress to work in the industry and you'll develop your practical skills, knowledge and employability through 'on-the-job' work placements

Gain 'hands-on' experience as part of the on-going project work we carry out with local businesses and organisations and enjoy fun team and confidence building activities to raise money for charity

You'll have the opportunity gain the Construction Skills Certification Scheme (CSCS), which proves that you have the qualifications needed to work on-site. You won't get a job with a recognised company without one!

Where could your career take you?

Construction is a growth industry which means that there are plenty of varied careers to choose from once you're qualified.

You will enter the industry as a qualified tradesperson but once you have the relevant experience you can progress to professional roles such as foreman, site manager, project manager, contracts manager and surveyor.

If you fancy a varied career, many jobs in the construction sector involve working in different locations and workplaces.

Some popular career options in this sector include:

- Project manager
- Bricklayer
- Plasterer
- Business owner
- Bench joiner
- Site joiner
- Architect

The average salary for trades people ranges from £30,000 to £50,000 per year and this diverse industry can offer you travel opportunities in the UK and abroad

Former student profile

Mikey Roberts

Current job role: Assistant Site Manager for Pochin

Previous course: Level 3 Diploma in Brickwork, 2014

"I owe everything to the Construction department as they prepared me for the world of work. My tutors emphasised the things I needed to do, and the workshops are brilliant. I would recommend studying Construction at Reaseheath to anyone."



DID YOU KNOW?

By 2022 it's estimated that employment in the construction industry will reach 2.77 million with 158,000 jobs being created over the next 5 years



Student profile

Tom Lewis

Level 1 Diploma in Carpentry and Joinery

School: Bishop Heber High School, Malpas

Next step: Level 2 Apprenticeship with R S Burgess and Sons Ltd

Ambition: Property developer

"I decided to study joinery rather than another construction craft as I felt it would most benefit my future career. I've learned how to use hand tools and the different joints, and I've also looked at site health and safety and building regulations. I must be doing OK because I won the new entrant joinery class at Skillbuild in Birmingham when I was part of the student team there.

"I got experience working on a timber framed home during my course. Seeing the job through from footings to final finish was really interesting. I've now got an apprenticeship so I'm looking forward to learning more."



DID YOU KNOW?

Senior and Chartered Architects can earn in the region of £50,000–£100,000 per year

Your Reaseheath Experience

You'll benefit from our links with leading national and international companies and gain valuable insight with on-site visits and trips to building shows such as Eco Build and The Skills Show. You can also put your skills, technical ability and time management to the test by going head-to-head with the nation's most talented young tradespeople in SkillBuild and WorldSkills UK competitions.

Organised by CITB, SkillBuild is the largest multi-trade competition in the UK for trainees and apprentices. You could even be selected for the national finals and go on to compete internationally at EuroSkills and the WorldSkills global finals.

Last year, a team of 10 Reaseheath construction students collected an impressive 6 awards at our regional SkillBuild qualifier.





Employability

Jobs in construction are well paid and the opportunities for career progression are excellent. From building new homes or restoring heritage buildings to working on large sites or individual home extensions, this sector will offer you plenty of career options.

You can strengthen your employability skills by working towards the additional awards we offer such as the Construction Skills Certification Scheme (CSCS) which proves that you have the required training and qualifications for working on-site. Gaining additional qualifications is fantastic for your personal development and looks great on your CV!

Industry view

Craig Hallworth

Director of Hallworth Construction

"Due to our continued use of Reaseheath College as our preferred training provider, our apprentices have enjoyed a thorough training over the last decade.

"Each apprenticeship is tailored to ensure maximum retention and to develop the knowledge our trainees need to achieve their aspirations. We would recommend Reaseheath to any business who wishes to have a top quality staff."



Earn while you learn

As a Reaseheath construction apprentice you'll get to earn while you learn while building up your technical knowledge and industry skills.

Based mainly in the workplace, you'll attend college on block or day release where our specialist staff will train you in our fully equipped workshops. You will strengthen your understanding of the construction industry as a whole and get the chance to specialise in brickwork, carpentry and joinery or plastering.

Our apprentices work for many companies including Faber Construction, AP Builders, Hayes Builders LTD, Pochins, Hewitt Developments, Nantwich Building Services, Smilers Construction Ltd, Nick Proctor Building and Joinery Services and PG Mullocks.

Our courses

Our specialist one year diplomas offer all the training you will need to start your career in construction. From learning the basic skills of bricklaying, joinery, tiling or plastering, to advancing your technical knowledge and project management skills, you'll be fully equipped to get a job once you've completed your studies.

Level 1 Diploma in Brickwork

This hands-on course will introduce you to the basics of bricklaying

Level 2 Diploma in Brickwork

Further enhance your skills working with bricks, following on from your level 1 qualification

Level 3 Diploma in Brickwork

This advanced level training is designed to prepare you for a career as a fully qualified bricklayer

Level 3 Diploma in Construction and the Built Environment

Develop your skills and knowledge across a range of construction topics including surveying, setting out, estimating, construction design and health and safety, in this two year course

Level 1 Diploma in Floor and Wall Tiling

Learn the basics of fixing tiles and develop skills in safe working practices in construction

Level 1 Diploma in Joinery

You will gain a basic grasp of flooring, scaffolding, working with power tools and other key skills working in our specialist construction workshops

Level 2 Diploma in Joinery

The next step in your joinery career, you'll develop comprehensive skills in roofing, stairs, flooring, door hanging, power tools and other areas such as scaffolding

Level 3 Diploma in Joinery

A professional level course, you'll learn about the finer details of the trade along with project management and site supervisory training

Level 1 Diploma in Multiskills

Working in collaboration with Building Heroes this dedicated course, for military veterans and those in resettlement, will retrain you with the skills to pursue a career in construction or property maintenance

Level 1 Diploma in Painting and Decorating

This course is a great starting point for those who are looking to have a career in painting and decorating

Level 1 Diploma in Plastering

A great introductory course if you're looking to gain basic skills in plastering

Level 2 Diploma in Plastering

Your vital progression route from Level 1, topping-up your skills ready to become a fully qualified plasterer

Level 3 Diploma in Plastering

Advanced level training to teach you the intricate side of plastering, including internal and external curved walls as well as fitted columns and decorative finishes

Level 2 and Level 3 Construction (Carpentry and Joinery, Brickwork and Plastering) Apprenticeships

Broaden your understanding of the whole construction industry learning 'on the job', along with having the chance to specialise in brickwork, carpentry and joinery or plastering

Level 2 Property Maintenance Operative Apprenticeship

Develop your property maintenance skills and knowledge through on the job training

Discover our courses:

 reaseheath.ac.uk/construction

ENGINEERING, TECHNOLOGY AND CONSTRUCTION ACADEMY

ENGINEERING APPRENTICESHIPS

INDUSTRY LEADING

We are the apprenticeship
provider of choice for
many industry leading
companies

Want to work with big and complex machinery? Engineer your future with a Reaseheath apprenticeship.

As an engineering apprentice you'll be able to access high quality training to develop your career in either the agricultural, construction plant or rail engineering industries.

We are the apprenticeship provider of choice for many industry leading companies such as A-Plant, AP Webb, Arriva Trains, Banner Plant, Bombardier, Case New Holland, CLAAS, JCB Dealerships and The GAP Group – so we can guarantee that you'll be in good company.

Our apprenticeships have been developed and designed with these national and international employers, helping to ensure you gain the technical know-how and practical ability needed by industry.

If you want to combine essential on-the-job experience with further training at college on day or block release – our apprenticeships could be just what you're looking for.

At a glance

Level 2 Construction Plant Apprenticeship

Level 3 Construction Plant or Machinery Maintenance Advanced Apprenticeship

Level 3 Land-Based Service Engineering Technician Apprenticeship

Level 3 Rail Engineering Technician Apprenticeship

Level 2 and Level 3 Vehicle Parts (HGV or Agricultural) Apprenticeships

WHY STUDY AN ENGINEERING APPRENTICESHIP AT REASEHEATH?

Our partnership with market-leading manufacturers means that you'll be learning with state-of-the-art technologically advanced machinery and other equipment

Once qualified, you'll enjoy a range of rewarding career opportunities within the engineering industry and earn a skilled tradesperson's wage

You'll develop transferrable skills which can open the door to careers in allied industries such as quarrying and mining, offshore, petrochemical and factory maintenance

Our engineering apprenticeships have been developed and designed with employers which means you'll finish your apprenticeship with the skills and knowledge needed by the sector

We have extensive industry links which is good news when it comes to your future career prospects. Many of our apprentices are employed by some of the best manufacturers in the world

'Learn by doing' in our brand new multi-million pound technical training facility with electronic diagnostic equipment, hydraulic training rigs, electronics lab and industry-standard workshops

Where could your career take you?

The engineering maintenance sector can offer many career options and you will develop the transferable skills and the experience that employers rate so highly when recruiting.

You could find yourself working as an engineer in any number of industries such as gas and oil, pipeline, quarrying, recycling, shipping and marine, building and infrastructure.

As a fully qualified maintenance engineer, the industry can offer you excellent career progression, a generous salary and the chance to work in the UK and abroad.

There's a wide variety of jobs on offer including:

- Construction plant mechanic
- Agricultural engineering technician
- Rail maintenance technician
- Auto electrician
- Construction plant operator
- Factory maintenance technician
- Engineering maintenance technician
- Forklift truck technician
- Large goods vehicle technician
- Recycling industry engineer
- Offshore maintenance technician
- Pipeline maintenance engineer
- Crane mechanic

A high proportion of mechanics currently working in Formula One started off their career as a plant mechanic

Former student profile

Phil Sutcliff

Greenshields JCB, JCB Advanced Apprentice of the Year 2018

"Coming from a background in music, I had little knowledge of construction mechanics or the industry. Now, 3 years later, I'm set for a lifetime career in diesel, petrol, hydraulics and electrics and I can work anywhere in the world thanks to the experience I gained at Reaseheath."



Student profile

Dan Lewis

Level 3 Construction Plant Apprenticeship

School: Aquinas College, Stockport

Next step: British Antarctic Survey

Ambition: To travel the world

"I qualified as a construction plant engineer after a three year apprenticeship with Arnold Plant Hire. I studied at Reaseheath, which was a great way to get to grips with the latest technology.

"I'm now off on a great adventure as a member of the British Antarctic Survey, working in one of the most remote places on earth. I'm leading a team of seven engineers and for 18 months I'll be looking after heavy machinery which is being used to build a new wharf for research ships.

"I could be working on snow mobiles, piste bashers, bulldozers or loading shovels in temperatures as low as minus 50°C. I can't wait!"



Your Reaseheath Experience

As an engineering apprentice you will benefit from our links with top national and international companies and experience how the industry operates with relevant work placements and on-site visits.

All our staff have extensive industry experience and collaborate with leading manufacturers to keep you up-to-date with the very latest advancements in the sector you're looking to work in.

We've invested £1 million into specialist training resources to enable the very latest equipment technology to be taught. This includes advanced hydraulic training rigs (the first in the UK), CAN bus diagnostics training modules and the very latest vehicles and equipment from leading manufacturers to train on.

Once you've completed your apprenticeship, you'll have the skills employers want such as diagnosing complex systems for faults, stripping and assembling a range of sub systems and using hand powered and electronic tools to carry out maintenance activities.



Industry view

Bob Harper

Head of Training, A-Plant

"We have enjoyed an excellent relationship with Reaseheath College spanning many years and Reaseheath is A-Plant's sole provider of training for our Plant Maintenance Apprenticeship. A-Plant is recognised as providing one of the most valued and sought after apprenticeship programmes in the equipment rental industry and Reaseheath has played an absolutely crucial part in helping us achieve this.

"The structure of the apprenticeship programme allows A-Plant apprentices to balance off the job training with in-house training, ensuring they experience real life exposure in the construction industry whilst receiving supported learning. Our apprentices have the opportunity to learn a valuable trade, gain qualifications and take those first steps towards a rewarding career. We've had some fantastic results where our apprentices have progressed through the company to managerial positions."



Where you'll be studying

Part of our new Technology Park, our Advanced Agricultural Technology and Engineering (Agri-Tech) Centre opened its doors in 2018 following an investment of £7 million.

This exciting scheme was developed in partnership with major engineering companies and will provide a dedicated centre for our Engineering Apprenticeship Academy.

Carefully designed to lead the way in training and technology, the purpose-built centre contains industry standard workshops, technical teaching classrooms and a new electronics lab. The centre also houses a showroom where you can experience product launches and industry events.

Earn while you learn

Our apprenticeships have been carefully developed with employers to provide you with 'on-the-job' training while you earn a wage and develop the relevant skills needed to fast-track your career in the construction plant, rail or agricultural engineering industries.

Some world-class manufacturers have donated top of the range machinery and equipment which we use to develop your technical skills. The majority of your learning will occur in the workplace and you will visit college on day or block release to receive further training from our specialist staff.

DID YOU KNOW?

The average starting salary for a trainee construction plant mechanic is £12,000. Experienced mechanics can earn over £30,000

Our courses

Do a real job working alongside experienced professionals, while gaining a valuable industry backed qualification and get paid at the same time!

Level 2 Construction Plant Apprenticeship

This course will equip you with the skills needed to become a construction plant mechanic

Level 3 Construction Plant or Machinery Maintenance Apprenticeship

Gain the skills needed to effectively maintain and repair construction industry equipment and qualify as a workshop engineer

Level 3 Land-Based Service Engineering Technician Apprenticeship

Studied over 2-3 years block release, this apprenticeship is ideal for employed land-based service engineers who wish to further develop their skills and knowledge

Level 3 Rail Engineering Technician Apprenticeship

Designed in partnership with Bombardier and Arriva Trains, this apprenticeship provides a route into employment within the rail industry as an engineering technician

Level 2 and Level 3 Vehicle Parts (HGV or Agricultural Engineering) Apprenticeship

Study at Reaseheath on block release whilst receiving on-the-job training in HGV or Agricultural vehicle parts, depending on your employer

If you're interested in becoming a Reaseheath engineering apprentice please contact apprenticeships@reaseheath.ac.uk for more information on how to apply.

Discover our courses:

 reaseheath.ac.uk/engineering

ENGINEERING, TECHNOLOGY AND CONSTRUCTION ACADEMY

MOTOR VEHICLE

EXPERTS

Be guided by our expert staff who have many years of industry experience and knowledge

Are you driven to know more about motor vehicles and to become a next generation motor vehicle technician?

Our motor vehicle courses will help fast-track your career by giving you the relevant qualifications and practical skills employers want. This means you'll be first off the grid when it comes to finding a job!

Guided by our expert staff, who have many years of industry experience and knowledge, you'll get plenty of hands-on experience and the chance to broaden your horizons with visits to track days, motor shows, transport museums and other relevant businesses.

If you're looking for a career in motor vehicle technology, we have the know-how to help you to reach your destination.

↓ At a glance

Level 1 Foundation in Engineering

Level 1 IMI Diploma in Transport Maintenance

Level 2 IMI Diploma in Light Vehicle Maintenance and Repair

Level 3 IMI Diploma in Light Vehicle Maintenance and Repair

WHY STUDY MOTOR VEHICLE AT REASEHEATH?

Gain relevant, practical experience in our multi-million pound, purpose-built workshop which, having five bays, makes it the largest in the area

Develop your knowledge of advanced diagnostic systems and get the chance to fault find and carry out repairs to industry standard

You can work towards additional training qualifications in hybrid technology and air conditioning systems to enhance your employability and personal development

Learn in our excellent workshop facilities that include ten vehicle ramps, a simulated MOT standard test lane and four-way Hunter laser wheel alignment

You'll benefit from 100 hours of industry relevant work placement, giving you hands-on experience within a motor vehicle environment

All our vehicle technology courses are paperless – using modern learning methods, you will work through your own ePortfolio as you advance your practical skills

Where could your course take you?

Did you know that the UK automotive industry is a vital part of our economy and turned over £82 billion in 2017?

The wider automotive industry employs more than 856,000 people in over 150 different job roles and our IMI (Institute of the Motor Industry) diplomas are internationally recognised awards that can open the door to job opportunities around the world.

Many of our motor vehicle students have gone on to work for independent garages and main dealerships, and following completion of our level 3 qualification you can train in MOT testing.

Some popular career options include:

- Vehicle technician
- Working within main vehicle dealerships
- Master technician
- Motorsport engineer

An experienced motor vehicle technician can expect to earn an average salary of £25,000

Former student profile

Cody Brookes

Current job role: Technician at Crewe Audi and Reaseheath Industry Representative

Previous course: Level 2 and 3 IMI Diplomas in Light Vehicle Maintenance and Repair, 2014

"I'm so grateful for the support and training I received at Reaseheath – my course magnified my passion for the motor trade. My tutors were fantastic and always made sure that my understanding and practical ability were of a high standard.

"The experience and skills I gained gave me the confidence to focus my career aspirations and get a great job with good career prospects."



Where you'll be studying

Following an £8 million investment, our purpose-built engineering centre opened its doors in 2018 and contains the very latest equipment and resources. Our new centre includes workshops, a stunning exhibition style showroom, classrooms and a state-of-the-art electronics lab.

Based in our multi-million-pound workshops, which are equipped to industry standard, you'll develop your technical knowledge and practical know-how in the maintenance of automotive vehicles by using the latest diagnostic equipment.

Our workshop has five bays which makes it the largest in the area and contains advanced diagnostic systems such as Autel MaxiDAS, DEC Superscan, Picoscope, Autel Quadscope, Ethos and VAG-COM.



Student profile

Ollie Rhodes

Level 3 IMI Diploma in Light Vehicle Maintenance and Repair

School: Abbotsholme School, Staffordshire

Next step: Level 2 Apprenticeship with Swansway Jaguar, Crewe

Ambition: Racing team technician

"I chose the Level 3 course at Reaseheath because it offered the chance to get hands-on with all vehicle components and systems, from engines to chassis and transmission systems.

"The workshops have all the technology you'd find in the workplace, like ramps and modern diagnostic equipment, and the lecturers and technicians are really knowledgeable because they've all worked in the industry.

"I got a different experience from my work placement. I learned how to be part of a team at a busy service garage and dealership, and the importance of time schedules.

"I felt well prepared to enter the industry, and now I'm working on top performance cars."



DID YOU KNOW?

78,480 young people began engineering and manufacturing apprenticeships in 2016/17

Student profile

Ellen Scattergood

Level 2 Motor Vehicle Apprenticeship

School: Shavington High School

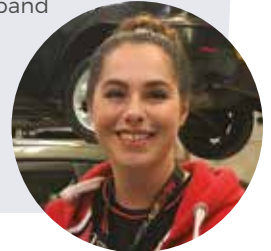
Employer: Oulton Workshop, Tarporley

Next step: Level 3 Apprenticeship with Stuart Graham Honda, Crewe

"I've always been interested in cars and since I started my apprenticeship I've realised that being a mechanic is definitely a good career for a woman.

"I enjoy diagnosing and correcting problems and I like the variety of my day. We deal with road cars, vans, motorbikes, scooters, quad bikes, horse boxes and even mowers. As long as it's got an engine, we fix it!

"Coming into Reaseheath weekly gives me the chance to learn the theory of how systems work and to expand my practical skills in the workshop. The lecturers are really good, they always take time to explain things if you have questions."



Your Reaseheath Experience

As a motor vehicle student, you'll get to enjoy behind the scenes trips and visits to relevant businesses and sporting venues including track days and visits to car companies. You can also join in social events such as go-karting and paintballing.

We offer a range of additional qualifications and training which is great for your personal development and it's a valuable addition to your CV. You can train for level 3 awards in electric/hybrid vehicle system repair and replacement or in automotive refrigerant handling.

We also offer an IMI Level 2 Award in MOT Testing (Class 4 and 7)* and IMI Level 3 Award in MOT Test Centre Management* which are approved by VOSA (Vehicle and Operator and Services Agency).

*Candidates must meet entry requirements



Employability

Our courses are hands-on, and we work closely with industry to make sure your skills meet the needs of employers. We have strong links with local automotive companies and other industry professionals including industry partnerships with Car Transplants and Smiths Autoparts.

Based mainly in our well-equipped workshops, time spent in the classroom is kept to a minimum. With the help of our dedicated staff you'll develop your knowledge of maintaining automotive vehicles and become familiar with vehicle electrics, engines, chassis systems, and braking systems.

Our Level 2 and Level 3 Diplomas include learning more about vehicle electronics, engine management, chassis technology and modern transmission systems. You'll also learn about vital workplace health and safety practices, vehicle diagnostics and customer services training to fully prepare you for employment in this sector.

Our courses

Our motor vehicle diplomas offer a great balance between practical and theoretical study and are all one year long in duration. Your GCSE results will determine whether you start on a level 1 or level 2 programme, following this you can then progress up to the level 3 course or on to an apprenticeship.

Level 1 Foundation in Engineering

If you are interested in engineering, this hands-on course offers you a great introduction to a range of engineering skills including using hand tools, welding and electrical wiring

Level 1 IMI Diploma in Transport Maintenance

This is a great introductory course to give you the basic mechanical skills you'll need to work in the automotive repair industry

Level 2 IMI Diploma in Light Vehicle Maintenance and Repair

This course is for automotive enthusiasts keen to jump-start their career in the motor vehicle industry. Throughout the year you'll be trained to repair and replace light vehicle components, working on a range of different motor vehicles

Level 3 IMI Diploma in Light Vehicle Maintenance and Repair

Building on your training at level 2, you'll advance your skills in more complex chassis and engine repair work, appealing especially to the aspiring automotive technician

Discover our courses:

 reaseheath.ac.uk/motor-vehicle

FOUNDATION LEARNING AND LIFE SKILLS ACADEMY

ENTRY AND FOUNDATION LEARNING

ACHIEVEMENT

Last year 98% of our
foundation students
progressed into
employment or
further learning

Boost your confidence and learning skills in a supportive environment and gain 'on-the-job' experience with our entry and foundation courses.

If you'd like to improve your academic, personal and employability skills after leaving school, there's nowhere better than Reaseheath. We provide opportunities for all members of the community to learn and develop so they can reach their full potential.

Last year 98% of our foundation students progressed into employment or further learning and we will guide you through a range of options to help you get paid (or voluntary) work so you can enjoy greater independence.

We understand that starting college can be a bit nerve-wracking and you can test the water with transition days before beginning your course. As your confidence grows, you'll develop key employability skills such as time keeping, understanding body language and learning how to work as part of a team!

↓ At a glance

Entry Level Programme

Level 1 Certificate or Diploma in Agriculture

Level 1 Certificate or Diploma in Animal Care

Level 1 Certificate in Employability Skills

Level 1 Certificate or Diploma in Engineering

Level 1 Certificate or Diploma in Health and Fitness

Level 1 Certificate or Diploma in Horticulture

Level 2 Extended Certificate in Animal Care

WHY STUDY ENTRY AND FOUNDATION AT REASEHEATH?

You'll be learning in our classrooms and industrial units where you'll develop your practical skills and knowledge to industry standards

Our friendly and highly qualified staff will support you throughout your learning journey

Learn about things you are passionate about and develop employability skills while you improve your English and maths – you can choose from subjects such as agriculture, animal care, engineering, horticulture and sport

Gain new skills while you experience the many things our campus has to offer like looking after zoo and farm animals, growing plants or even mastering the indoor climbing wall

If you like to stay active, there are plenty of sports and activities for you to choose from such as badminton, volleyball and exercising in the college gym

You can join fundraising activities and help to organise events to raise money for local charities

Where could your course take you?

Many of our students progress to paid or voluntary work or go on to study Level 2 qualifications once they have gained the necessary entry requirements.

We run an annual bespoke careers event and you'll receive plenty of sound advice to help you decide what your next steps should be. We also offer supported employment opportunities to give you employability skills and on-the-job experience in the workplace.

Former student profile

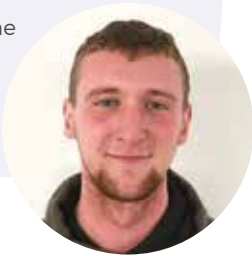
Lewis Atherton

Level 1 Certificate in Engineering

"The foundation studies programme has taught me to be a better person. Now I ask questions before I start a task to make sure I fully understand what to do.

"I am more independent, more ready to work. I am a lot more confident, a better self-manager. My behaviour and time keeping have really improved. I have improved my maths and English and my knowledge of engineering.

"I have now got a part time job at Birch Farm in Warrington and I will start this full time after I complete my course."



Student profile

Thomas Plant

School: Congleton High School

Next step: Level 2 Diploma in Countryside and Environment

Ambition: Countryside ranger

"As a foundation student I studied agriculture, countryside and horticulture and found I enjoyed countryside the most. I like being outside, doing fencing, building stone walls and making paths.

"I worked with the rangers at Astbury Mere Country Park in Congleton every Tuesday from late October to May and I had a couple of full weeks' work experience there too. It was good fun, even being outside during winter, and I got a good reference.

"I've enjoyed the practical sessions at college and I've done well with my maths and English. I'm now looking forward to studying in the countryside department."



Student profile

Kieron Rooney

School: Blackfriars Academy,
Newcastle-under-Lyme

Next step: Level 1 Diploma in Sport

Ambition: Football or boxing coach

"I've been on the Entry Programme for two years studying subjects including animal care, horticulture and fit for work. Since coming to Reaseheath I've become much more independent and confident and I've worked hard to achieve my goals, particularly in maths and English.

"I've enjoyed working with my lecturers, and I've had lots of fun with a new group of friends. I even got the 'Best Entry Level Student' trophy at the college awards!

"I've always enjoyed sport so I'm really pleased I'm going to study it further. I spent my work experience with Crewe Alex FC helping to coach schoolchildren and I can see myself doing that as a career."



DID YOU KNOW?

Last year our entry and foundation students raised £1,400 for charity through fundraising activities during RAG Week and at our Christmas Market

Where you'll be studying

We've made a continuing investment of £80 million across our campus so you'll have access to some of the best facilities and learning resources in the country.

Our range of specialist facilities have been influenced by industry to make sure you develop the skills employers are looking for. You'll learn to work to industry standards inside our advanced engineering (Agri-Tech) centre, state-of-the-art food centre, sports science and performance academy, specialist teaching zoo and purpose-built farm barn, depending on which course you choose.

As a foundation student many of your classes will take place in our dedicated Chaffinch and Weaver facilities, with purpose-built classrooms, an IT suite and group study area. You'll also be able to access Centrepoint, a dedicated study area above our library, which includes a reading zone and a new IT room with 18 fixed computers and laptops.

Your Reaseheath Experience

Our highly trained and dedicated staff will be on hand for you throughout your journey. Our team has much experience of helping young people with diverse needs, including those with disabilities. You'll be learning inside a caring, nurturing environment with support available both inside and outside of the classroom.

You will gain all-important industry experience with trips to local business such as Chester Zoo and benefit from visits to industry-leading events like WorldSkills UK at the NEC in Birmingham.

We run competitions and rewards points to celebrate your personal, social, emotional and academic achievements and there's lots of social activities to be enjoyed like bowling or trips to local theme parks and other visitor attractions.



Employability

As a foundation student, you will spend 100 hours of relevant work placement with a range of different providers including local charities and national companies such as Halfords and Quickfit.

This is a great way to develop your career prospects and build confidence in the work place – it will look fantastic on your CV too! Some of our students have even been offered paid or voluntary work as a result of their placement.

You can also boost your employability with our employability skills certificate which is specially designed to build the foundations you'll need to undertake a traineeship or an apprenticeship. You will benefit from extensive work experience in many areas and continue to improve your English and maths.

Our courses

Learn about subjects that really interest you with our range of introductory level courses. You'll continue to improve your English and maths skills whilst completing work experience to help build your employability. Your tutors really want you to succeed and will tailor an individual learning plan to meet your particular needs and aspirations.

Entry Level Programme

Try out Animal Care, Horticulture, Agriculture, Countryside and Equine in this exciting one year programme, whilst developing your personal, social and employability skills

Foundation Learning Level 1 Programmes (Level 1 Certificate or Diploma)

These very practical courses are ideal for those with no formal entry requirements. You'll choose from one of the following vocational areas: Agriculture, Animal Care, Engineering, Health and Fitness or Horticulture

Level 1 Certificate in Employability Skills

This foundation programme is for young people looking to build up their employability skills with a view to moving on to supported employment or an apprenticeship

Level 2 Extended Certificate in Animal Care

If you are studying Animal Care and you are not ready to move straight on from a level 1 to a level 2 programme, you could complete a one year Extended Certificate qualification

Discover our courses:



reaseheath.ac.uk/entry-foundation

HOW TO APPLY

1. Complete an application form

You can apply online at: reaseheath.ac.uk/apply

If you apply online we'll be able to start processing your application immediately and you will receive an email confirming receipt of your application.

Alternatively you can request a paper based application form by calling us on **01270 613242** or by sending us an email fe-enquiries@reaseheath.ac.uk

2. Send your application form to us

If you are submitting a paper based application please post it to:

**FE Enquiries and Applications Team
Reaseheath College
Nantwich
Cheshire
CW5 6DF**

3. Look out for a letter from us

This will have details of your interview date with a tutor from your chosen subject.

4. Meet your tutor

You will meet with your tutor and have an initial college interview. This is a chance to talk about what you would like to achieve at college and what we can do to help. At your interview, you will also have the opportunity to enquire about learning support, accommodation, transport and finance.

If you are successful in your interview, you will be given a conditional offer on the same day for a place on your chosen course.

5. Secure your place

We will send you an offer letter in the post within 14 days following on from your interview.

6. Student information pack

During the summer we'll send you a student information pack. This will have all the information you need to help you on your way to starting college!

7. Welcome to Reaseheath College!

We look forward to welcoming you to Reaseheath College.

Information about your first day can be found in your student information pack.

Promoting fairness and inclusion

Reaseheath College is committed to promoting fairness, inclusion and equality of opportunity in all its activities.

Applications are welcomed from all members of the community regardless of age, disability, gender, ethnic background or religious belief. The College will take into account any learning difficulties or disabilities and will endeavour to make reasonable adjustments to meet individual needs.



THE COLLEGE MISSION

To inspire achievement by delivering outstanding education and skills

Our vision

We will

- Achieve excellence through fully releasing the potential of our students and colleagues
- Deliver inspirational teaching and learning and student experience in Further and Higher Education
- Make Reaseheath the preferred place to work and study with superb facilities, resources and support for colleagues and students
- Lead and develop partnerships with industry and our communities that make a positive difference
- Be the college, training provider and employer of choice

Our values

PRIDE

People

We will work together in a safe and secure environment with a positive approach to our own and others health and wellbeing. We will respect democracy and individual liberty, recognising the valuable contribution each person can make to society.

Responsibility

We will be responsible for our own actions and decisions whilst making a positive contribution to community cohesion and pride. We will demonstrate environmental sustainability through our behaviour.

Integrity

We will demonstrate honesty, integrity and ethical standards in everything we do. We will respect the rule of law and act fairly in the best interests of all.

Diversity

We will actively promote equality; recognise, respect, promote and celebrate diversity and individual difference and strive to create an inclusive environment. We will challenge behaviour or views which discriminate against others.

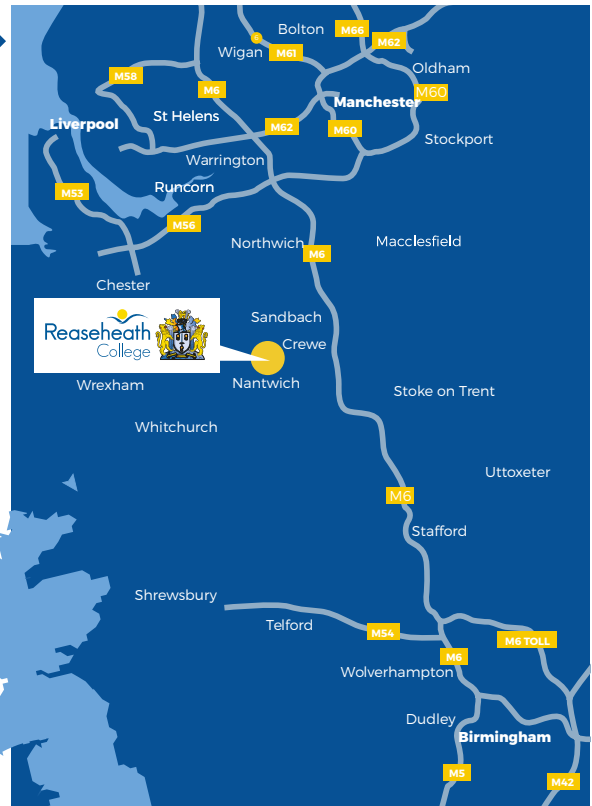
Excellence

We will challenge ourselves to strive for the highest standards of quality and behaviour by adopting a supportive self-critical approach in our pursuit of excellence. We will always aim to be the best that we can be!



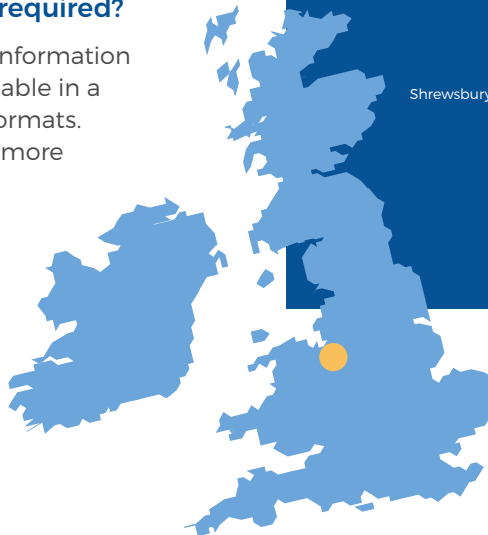
WHERE IS REASEHEATH?

For detailed directions to Reaseheath College visit reaseheath.ac.uk/how-to-find-reaseheath



Alternative format required?

This publication and information on our courses is available in a number of different formats. Call **01270 613219** for more information.



While every effort has been made to ensure that the information contained within this prospectus is correct at the time of printing, some details may be subject to change. The college accepts no responsibility for any errors or omissions. Visit our website for up to date course information. The college reserves the right to withdraw courses where there is insufficient demand.



Reaseheath College
Nantwich
Cheshire
CW5 6DF

✉ fe-enquiries@reaseheath.ac.uk

☎ 01270 613242

💻 reaseheath.ac.uk



European Union
European Structural
and Investment Funds

