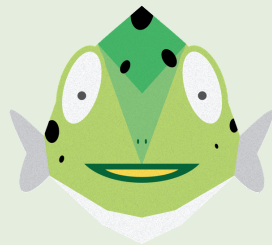


Habitats

**Lots of wild activities
about habitats.**

National curriculum links to
Geography and Science



Please note this pack contains activities
for a mix of ages and school years.



Habitat facts

A habitat is an animals home. It provides them with food, water and shelter.

There are lots of different habitats from grassland to desert and forests to coral reefs.

Different animals prefer different habitats and all those that live there live well together as they all do things to keep the habitat healthy and in balance

Sadly people are causing many habitats around the world to disappear. Forests are being burnt down, lakes and rivers polluted and the polar ice caps are melting. Without our help, these habitats and the animals that live in them could become extinct.

Wild wordsearch

D	U	U	Z	Q	F	F	L	F	K	O	I	L	G	F	S	V	J
Z	Y	N	G	U	Z	H	J	W	O	W	Q	H	R	O	O	Q	G
K	M	D	T	U	N	D	R	A	V	O	W	K	A	R	D	N	S
D	V	E	S	S	J	T	A	G	L	D	D	K	S	E	E	X	I
G	M	R	R	A	I	N	F	O	R	E	S	T	S	S	S	E	D
W	O	G	V	S	H	E	L	T	E	R	P	X	L	T	E	G	I
A	Y	R	X	U	R	O	C	K	P	O	O	L	A	Q	R	A	S
T	R	O	F	C	C	T	Z	U	P	V	N	S	N	S	T	G	B
E	A	U	T	H	A	B	I	T	A	T	J	R	D	F	I	J	I
R	G	N	H	K	J	W	M	E	C	O	S	Y	S	T	E	M	I
F	N	D	L	A	C	Y	A	Q	T	C	K	E	V	E	J	A	U
E	V	O	C	E	A	N	A	V	T	Z	E	S	D	H	D	W	U

Desert
Ecosystem
Food
Grassland

Tundra
Water
Forest
Ocean
Shelter

Habitat
Rainforest
Rock pool
Underground



Reaseheath
Mini Zoo

Whose home?

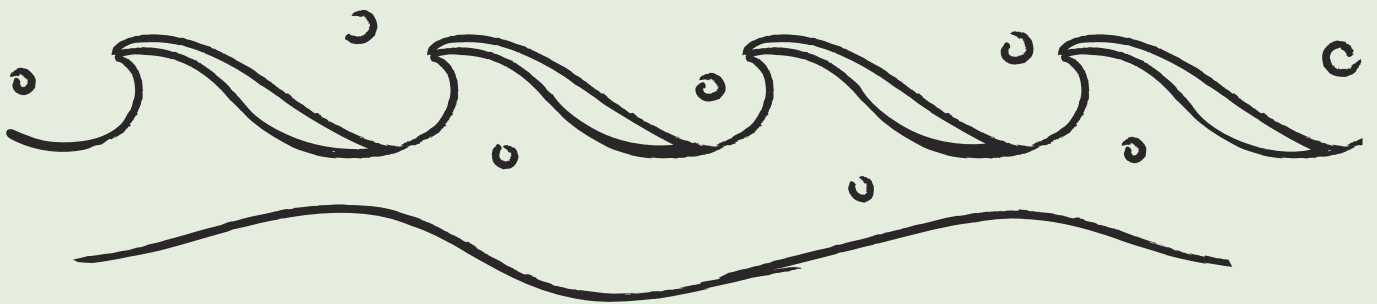
Choose and draw three animals that live in the habitats below.

Mountain slopes and forest



Whose home?

Ocean



Reaseheath
Mini Zoo

Whose home?

Grassland



Make a habitat!

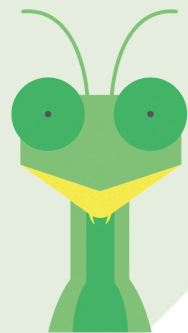
Plant a mini
wildflower
meadow

Build a pond

Plant a tree
or hedge

Make a leaf or
log pile

Create a
compost heap



Where do I live?

Draw a line to match the animal and their habitat.

Snowy Owl

Rocky shore

Worm

Desert

Sloth

Tundra

Sidewinder snake

Garden

Hedgehog

Rainforest

Hermit Crab

Soil or compost

Adaptation

Some habitats are pretty tough to live in! Animals adapt special features and behaviours to help them survive there.

For example Polar Bears have black skin to help them keep warm and white fur so they can camouflage. A lot of desert animals are nocturnal as it is cooler at night and big ears to help them release heat from their bodies.

Think about physical and behavioural adaptations animals that live in the habitats on the pages below have.

Then design your own super animal with special features to help them survive and thrive!

- Remember to label your features and behaviours.





Rainforest

Habitat features:

Very wet, lots of trees, humid,
lots of predators, lots of competition

Desert

Habitat features:

Dry, hot, little rain,
not many plants, sandy,
hard to find food

Tundra

Habitat features:

Cold, not much other life, seasonal plant growth, no trees, windy.



Rocky mountain slopes

Habitat features:

Rocky, steep, very changeable, no plants high up, food scarce.

Answers and extra activities

Where do I live?- Answers

Snowy Owl- Tundra, **Worm**- Soil/compost, **Sloth**- Rainforest, **Sidewinder Snake**- Desert, **Hedgehog**- Garden, **Hermit crab**- Rocky shore

Extra activities

- How many habitats are in your garden? Can you find any mini beasts in their natural habitat?
- Make some habitats of our own in a shoe box, use plastic animals and bits and bobs from the garden or round the house.
- When out on your daily walk how many habitats can you spot?
- Think of an animal, where does it live? What adaptations does it have?
- Research animals that have adapted to live in an urban environment. How have they changed?