



## Accessibility Guide for Reaseheath Mini Zoo

[zoo@reaseheath.ac.uk](mailto:zoo@reaseheath.ac.uk), 01270613222 opt. 1, [www.reaseheath.ac.uk/zoo](http://www.reaseheath.ac.uk/zoo)

**Contact for accessibility enquiries: Hannah Stone**



### Welcome

Welcome to Reaseheath Mini Zoo.

Located on the outskirts of Nantwich, Reaseheath Mini Zoo is the Animal Management Centre for students studying at Reaseheath College, and is open to the public on weekends and during school holidays.

### At a Glance



#### Level Access

- There is level access from the main entrance to:

- Zoo Shop
  - Toilets
  - Meerkats
  - Zoo Paddocks
  - Rabbit and Guinea pig Barn
  - Exotics Corridor
  - Courtyard
- There is level access from the car park to:
  - Zoo Entrance



### Visual

- All indoor parts of the venue are well lit



### General

- We have a concessionary rate for disabled visitors.
- We have a complimentary ticket policy for carers.
- There is at least 1 accessible toilet.

## Getting here

Reaseheath Mini Zoo  
 Reaseheath College  
 Nantwich  
 Cheshire  
 CW5 6DF



### Travel by public transport

- Getting to Reaseheath Mini Zoo is by private vehicle only. Buses do not run to the zoo. They can be taken to Nantwich Bus Station, but you would then require a taxi from Nantwich to the zoo.



### Parking

- We have a car park. There are accessible parking spaces. The parking is 400 metres from the main entrance. Parking is free.
- If you contact us in advance ([zoo@reaseheath.ac.uk](mailto:zoo@reaseheath.ac.uk)) we can arrange access to an alternative entrance to park outside the zoo building, less than 50 metres from the main entrance.
- From the car park to the entrance there is level access. The carpark is tarmac and is level.

## Arrival



### Path to main entrance

- From the street to the main entrance, there is level access.
- On approach to the main zoo building, you will need to cross the driveway and then head around the footpath to the right, and go over the speed hump to access the main entrance.



Footpath and speedhump for level access to the main entrance.



### Main entrance

- The main entrance has level access and is an automatic door 1510mm wide

### Visual Impairment - General Information

- All parts of the venue are lit.



### Ticket/ information desk

### Admission Kiosk

- From the main entrance, through the building to the kiosk outside, there is level access.
- The main hatch is a window but staff have access to come to the open door next to the window to discuss your needs.
- We have a concessionary rate for disabled visitors.
- We have a complimentary ticket policy for carers.

### Getting around inside

- The double doors are all 750mm to 1500mm wide
- There are slight ramps from the corridors to the courtyard.

- There are picnic benches

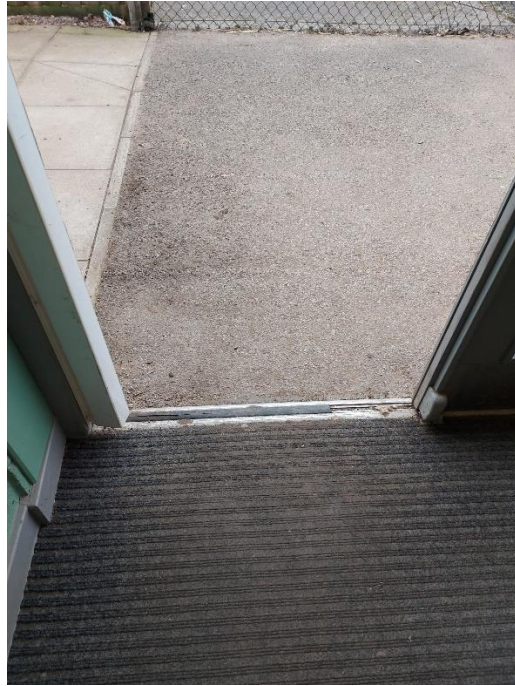
### Main Toilets

- There is an accessible toilet for disabled visitors.
- From the main entrance to the public toilet, there is level access. Each double door is 1500mm wide.
- The toilet door is 910mm wide.
- The direction of transfer onto the toilet is to the right.
- The toilet seat is 475mm high. The toilets have handrails. There is an emergency pull cord.



Accessible toilet doorway





Double doors along the corridor to the main entrance.

### Getting around outside

- From the main entrance to the area housing our otters and meerkats, there is level access. The route is 1390mm wide, or more.
- There are low ramps along the paths that run from the kiosk to this area. The smaller ramp is 870mm wide, the larger ramp is 1390mm wide.



Ramps along the path to the otters and meerkats.

## Meerkats

- From the main entrance to this area there is level access.
- There is a wall surrounding the meerkat enclosure that may be too tall to see over for wheelchair users.
- There is a permanent ramp which is 1100mm wide, and a viewing area adjacent to the meerkat enclosure. The wall is 945mm in height from this viewing platform.
- Please note chair users may require help accessing the ramp.



Meerkat viewing platform and ramp

## Tortoises

- Close to the meerkat enclosure, there is a picnic area and low window to view the sulcata tortoises.
- There is a slight step 30mm tall to access the viewing window.
- The route is 1140mm wide or wider.





Sulcata tortoise viewing window and picnic area.

### Zoo Paddocks

- There is level access to all outside zoo areas, including the zoo paddocks where the donkeys, goats, wallabies and tapir are kept.
- Access is 1080mm wide via the gate beyond the aviaries. If visitors require wider access there is an alternative route past the lemurs and serval.



Paddock gateway

### Rabbit and Guinea Pig Barn

- From the main entrance to this area, there is level access. There is a permanent ramp. Please note chair users may require help accessing the slope and sliding the shutter door. The doorway is 1270mm wide.
- The barn is well lit, but may be darker than outside so you may require time to adjust your eyes when you first enter the area.



Rabbit barn ramp access.

### Lemur Walkthrough

- The lemur walkthrough is not open to the public. Animal experiences will allow access with a member of staff.
- There is level access to the lemur walkthrough entrance
- The entrance is 1030mm wide
- There is a step and grassed slope to gain access into the lemur enclosure.
- The step is 70mm deep and the ground is an uneven, grassed/soil path.





### Exotics Corridor and Courtyard

- There is level access from outside to the indoor exotics corridor
- The rooms housing our exotic species have level access. The door is 870mm wide.
- Some display information is low, for wheelchair users.
- There is level access to the courtyard where there are picnic benches and vending machines.

## Customer care support

### Accessibility equipment

- The route to and from the main carpark is surrounded by grass verges which can be used to toilet your assistance dog. Please pick up after your dog.

---

Guide last updated: 13 February 2023