



We Are REASEHEATH

A GUIDE TO OUR COLLEGE AND COURSES

127

COURSES TO
CHOOSE FROM

20+

BUS ROUTES
ACROSS
THE NORTH WEST
& MIDLANDS

WHAT ARE YOU WAITING FOR?

ONSITE RESIDENTIAL
LIVING
FOR 1000 STUDENTS

FIND THE
RIGHT CAREER
FOR YOU

IMMERSE YOURSELF IN THE
**REASEHEATH
EXPERIENCE**



Principal's Welcome

We are delighted you are thinking about joining one of the leading specialist land-based and technical colleges in the country. We will do everything we can to ensure your time is productive and that you secure the best possible outcome for your future.

Your Reaseheath experience and Career Ready Passport will prepare you for life. You'll gain vital skills for your chosen career, for study at higher education, for your health and wellbeing and in contributing to society. You'll also make friends for life and have fun! We want you to enjoy your studies and will ensure that you achieve and progress as much as possible.

We'll help you to develop essential attributes such as technical expertise, a good level of maths and English, enterprise skills, confidence, resilience, and teamwork. This powerful combination of qualifications and industry experience will help you to enter employment or progress into higher education, for example at University Centre Reaseheath. We have some of the most progressive facilities and resources in the country, ensuring that we remain at the leading edge of education and training. But Reaseheath isn't all about work! Our priority is to give you the best but safest student experience. I'm sure you will remember your Reaseheath experience as one of the best times of your life.

5 REASONS TO CHOOSE REASEHEATH

2.



LEADING EDGE LEARNING SPACES

Learn with confidence in modern facilities, from leading-edge technology to purpose-built labs and workshops, thanks to £100 million investment in your future.

4.



OUTSTANDING STUDENT SUPPORT

Whether you need help with your studies, career planning, mental health, or finances, our expert support teams are here to guide you every step of the way.

1.



A THRIVING STUDENT LIFE

Reaseheath offers a vibrant campus life, complete with sports teams, student societies, social nights, and charity activities. With various accommodation options to suit your budget, you'll find your perfect fit.

3.



CAREER READY EDUCATION

Our courses are crafted with input from top employers, blending academic excellence with real-world relevance to ensure you're ready to step into your dream career.

5.



BEMORE

At Reaseheath, you're encouraged to push boundaries and reach beyond your aspirations, setting the stage for a successful and rewarding career.

CONTENTS:

Principal's Welcome
Reaseheath Campus
Accommodation & Transport
Support, Wellbeing & Finance
Events & Shows
Choosing the Right Course
Career Ready Programme
Student Life & BeMore
Apprenticeships
T Levels
Industry Focused, Career Ready

OUR COURSES:

Adventure Sport
Agriculture
Agricultural Engineering
Animal Management

2	Bakery, Confectionery & Pâtisserie	32
4	Business	34
6	Environmental Conservation	36
8	Construction Trades	38
10	Design, Surveying & Planning	40
12	Engineering	42
14	Equine	44
16	Floristry	46
18	Food Technology	48
20	Forestry & Arboriculture	50
22	Foundation Learning	52
	Horticulture & Landscape	54
	Motor Vehicle	56
	Personal Training	58
24	Public Services	60
26	Sport	62
28	Veterinary Nursing	64
30	University Centre Reaseheath	66

Reaseheath CAMPUS

If you want to study on a vibrant, friendly and beautiful campus and learn with some of the best specialist facilities and resources in the country, Reaseheath College is the place for you.



Our campus is nestled in beautiful countryside, on the edge of the award-winning market town of Nantwich, with good rail and road connections to Manchester, Liverpool and Chester for days you want to explore further afield. We are just 15 minutes from Junction 16 of the M6 and one hour from the North Wales coastline.



**SPORTS SCIENCE AND
PERFORMANCE ACADEMY WITH
SPORTS PITCHES, SPORTS HALL,
FITNESS STUDIO AND FITNESS
TESTING CENTRE**



**FOOD
CENTRE**



**ADVANCED ENGINEERING
AND AGRI-TECH CENTRE**



**VERTICAL
FARM AND
GLASSHOUSES**



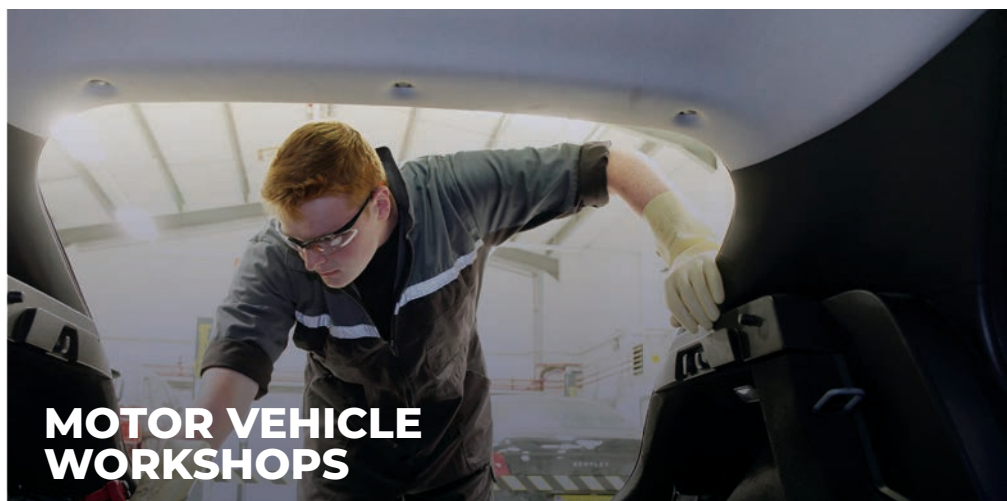
**COMMERCIAL
FARM WITH
ROBOTIC
MILKING SYSTEM**



**EQUINE
CENTRE**



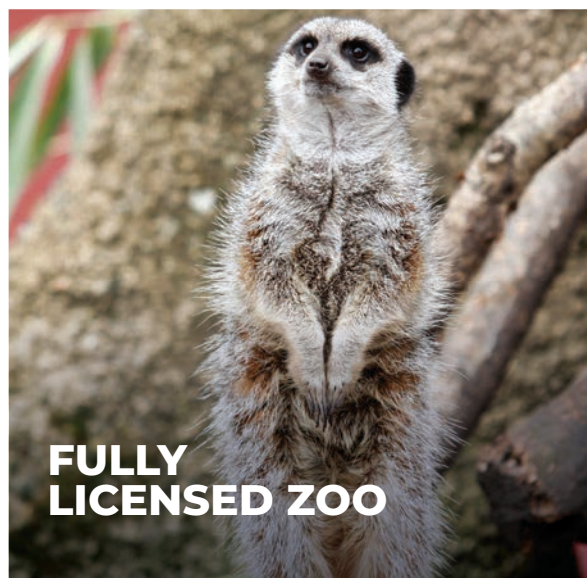
**CONSTRUCTION
CENTRE AND
INNOVATION HUB**



**MOTOR VEHICLE
WORKSHOPS**



**VETERINARY
NURSING LABS**



**FULLY
LICENSED ZOO**

Accommodation & TRANSPORT

If you decide to live on campus, you can make yourself at home in our high-quality on-site accommodation and if not, there are many transport and travel options to help you get to and from Reaseheath College every day.



DID YOU KNOW?

Residential bursary funds are available to support you with accommodation costs.



Accommodation

We have accommodation for up to 1,000 students, so there will be lots of other students in the same position as you. Together you can enjoy student life and learn to live independently away from home. Alongside our accommodation, we offer the following facilities and services on-site:

- ✓ Multiple catering outlets
- ✓ Common rooms and student areas
- ✓ College gym
- ✓ Free WiFi in halls
- ✓ Free on-site car parking
- ✓ Shuttle bus into Nantwich



Take a virtual tour at reaseheath.ac.uk/accommodation-tour or scan the QR code.





Transport

We offer an affordable, high-quality bus service across Cheshire and the surrounding areas covering more than 600 miles and transporting over 1,400 students every day.

Visit reaseheath.ac.uk/transport to view our interactive bus map and up-to-date price list. If you would rather travel by train, we also collect students from a few local stations or if you'd prefer to make your own way, we have a free car park and bike shelters.

BUS ROUTES INCLUDE:

R1 Congleton & Alsager	R13 Stockport, Cheadle Hulme & Wilmslow
R2 Macclesfield & Holmes Chapel	R14 Warrington
R3 Crewe & Nantwich	R15 West Kirby, Heswall, Neston, Tarvin & Tarporley
R4 Sandbach & Crewe Railway Station	R16 Runcorn, Helsby & Frodsham
R5 Wrexham & Malpas	R17 Ellesmere Port
R6 Shrewsbury & Wem	R18 Liscard, Upton, Port Sunlight & Eastham
R7 Telford, Newport & Market Drayton	R19 Mold & Chester
R8 Knutsford & Northwich	R20 Blythe Bridge, Meir, Longton & Trentham
R9 Biddulph & Newcastle-Under-Lyme	R21 Middlewich & Winsford
R10 Uttoxeter & Werrington	R22 Stafford, Stone & Woore
R11 Leek & Kidsgrove	R23 Oswestry, Ellesmere & Whitchurch
R12 Hanley & Audley	

R = Route

Find out more at www.reaseheath.ac.uk/transport or scan the QR code.



Supportive ENVIRONMENT

At Reaseheath, we care about your wellbeing and pride ourselves on providing a safe and stimulating environment for you to learn. You will have a course tutor who will guide you through your course and will always be willing to listen if you have a problem. You will also have a progress coach who will be on hand throughout your time at college to help ensure you achieve and make progress on your course.

We understand that sometimes it can be easier talking to someone outside of your curriculum area, so we also offer a range of additional support to students through:



To view our information guide for parents, visit reaseheath.ac.uk/parents



Student Services



Learning Skills
Centre (LSC)



The Library



Student
Wellbeing Service



College
Counselling Service



Reaseheath Careers
& Enterprise Service



Wellbeing

Our Wellbeing Service is available for anyone who may be experiencing difficulties at college.

Whatever the problem may be, whether you need support with homesickness, relationships, bullying, difficulties with coursework, anxiety, financial difficulties, bereavement, family problems or anything else, our team of expert wellbeing advisors are here to help, or refer you to the relevant services if required.

Our Wellbeing Team offer a range of services including 1:1 support in a relaxed and non-judgmental environment

and access to our BeWell site, which is our online Mental Health & Wellbeing resource available to students 24/7. We also have our own internal counselling team, which offers person centred counselling, and can be accessed on site, on Teams, or over the phone.

Scan the QR
code to find
out more.





Finance

Depending on which course you choose, you may be required to pay costs associated with study tours and trips or additional qualifications. These costs are not included in the tuition fees. You may be eligible to apply for loans and bursaries to help with your accommodation, travel costs, essential clothing and equipment or even your food while you are at college.

Financial support that may be available to you includes:

- ✓ Discretionary learner support fund
- ✓ Free college meals
- ✓ Residential bursary fund
- ✓ Vulnerable bursary fund
- ✓ College course bursaries
- ✓ Care to learn
- ✓ EMA/ALG Wales
- ✓ Financial support for 19+ students
- ✓ Free courses for adults



For further information on the financial support available for you, scan this QR code or visit reaseheath.ac.uk/finance



EVENTS

Course Open Events

Curious about life at
Reaseheath College and
University Centre Reaseheath?

Why not come and experience
it for yourself at one of our
Course Open Events?

Visit our stunning countryside campus, where
you'll discover our range of courses in more
depth, meet with supportive staff, and can ask
any questions you might have. It's the perfect
opportunity to explore your options and see
what makes Reaseheath so unique.

Our next Course Open Events are:



Saturday 18th January 2025



Saturday 8th February 2025



Saturday 22nd March 2025



Saturday 26th April 2025



Saturday 14th June 2025



SHOWS

Upcoming Shows



Each year, we host and support a variety of popular community and industry events which are a great way to strengthen our local and regional connections and showcase what we have to offer beyond the classroom here at Reaseheath.

Our Lambing Weekends on March 1st, 2nd, 8th and 9th are a great way to see lambing season up close, and to find out more about our hands-on approach to agricultural education. Our annual Family Festival, on May 18th, sees the whole campus spring into life as we open up our gates to the public – from a vibrant marketplace and campus tours, to demonstrations and hands-on workshops where you can try bricklaying, tree climbing, stock judging, flower arranging – there's something for everyone at this annual event.

We also take part in community shows across the region and this year you'll find us at the Staffordshire Show on May 28th and 29th, plus The Royal Cheshire County Show on June 17th and 18th. We're also proud to be hosting the Nantwich Show again on July 25th where we'll welcome hundreds of traders and thousands of visitors to our campus.



Find out more at www.reaseheath.ac.uk/experience or scan the QR code.



Choosing the **RIGHT COURSE**



Our courses are more practical than you may find in sixth forms and some other colleges.

We offer a number of routes within each level to suit individual needs. The chart below is aimed towards 16+ school leavers; however equivalent qualifications also apply. Please note entry requirements can vary depending on the course you choose. For full course information, including the specific GCSE subjects you require for your course, visit our website.

I have GCSEs at grades 3 or below

☆ Entry or Level 1 Qualification **1 YEAR**

After completing this course, you could go on to study a level 2 qualification depending on the subject area.

I have 5 GCSEs at grades 4 or above including Maths & English

☆ T Level Qualification **2 YEARS**

This course is equivalent to 3 A Levels. After completing this course, you could progress on to higher education, study for a degree or higher apprenticeship.

I have GCSEs at grades 3 or above

☆ Level 2 Qualification **1 YEAR**

After completing this course, you could progress on to a level 3 qualification or an apprenticeship.

I have 4 GCSEs at grades 4 or above including Maths & English

☆ Level 3 Qualification

This course is equivalent to 1 – 3 A Levels. After completing this course, you could progress on to higher education, study for a degree or higher apprenticeship.

1, 2 OR 3 YEARS

Maths & English

We also offer courses in maths and English. If you haven't achieved at least a Grade 4 in these subjects, you will start a tailored pathway of either GCSE or Functional Skills qualifications by attending maths and/or English lessons twice a week. Find out more at reaseheath.ac.uk/mathsandenglish

HOW TO APPLY

We can't wait to welcome you to Reaseheath College, but before we can, you need to follow the step-by-step process below on how you apply.

STEP 1



Come along to one of our Course Open Events – our team will be able to tell you about our courses and make sure that you find the right option to suit you.



STEP 6



Enrolment starts on GCSE results day – We will contact you and invite you to enrol with us, giving you exclusive access to our applicant hub.



STEP 2



Reaseheath.ac.uk – visit our website, browse our range of courses and apprenticeships, so that you can choose the course you'd like to apply for.



STEP 5



Find your feet – you will be invited to an in-person event where you will have a taster of what it's really like to study at Reaseheath College on your chosen course, as well as make some new friends and discover everything our unique campus has to offer.



STEP 3



Apply for the course using our online application portal making sure you complete all of the relevant information.



STEP 4



Attend an informal interview at the College. When you apply, you will receive an invite to attend an interview with one of our lecturers.



STEP 7



Freshers – Dive into college life with fun activities, make new friends and connect with our Student Union to kickstart your journey as a Reaseheath College student.

Visit reaseheath.ac.uk or scan the QR code to apply





CAREER READY PROGRAMME



The Career Ready Programme at Reaseheath College is designed to equip all students with the essential skills and knowledge needed for success beyond their studies.

Delivered alongside your academic course, this programme includes weekly sessions, workshops, and guest speakers covering a wide range of important topics. From financial budgeting, employment, and independent living to mental health awareness and online safety, you'll gain valuable insights to prepare you for the future.

In addition to these workshops, the Career Ready Programme provides personalised careers advice and guidance, including UCAS support, to ensure you're fully prepared for your next steps. You'll also develop key digital skills and workplace behaviours essential for your career. Regular 1:1 reviews are part of the programme, helping you stay on track and achieve your goals.





Student LIFE

The Reaseheath experience begins the moment you start your course or move into our halls, with a team of returning students welcoming you and guiding you through four weeks of fun events like bushtucker trials, slip and slides, and a freshers' ball. Our student social area, located at the heart of campus, offers pool tables, games, table tennis, and large-screen TVs, providing a great space to relax and connect with friends.

There's so much to do in your spare time at Reaseheath, from clubs, societies, and social events to sporting activities like netball and football, where you can even compete in leagues.

The Reaseheath Students' Union, in collaboration with the Student Life Team, organises a packed calendar of events, ensuring there's something for everyone.

Whether you're into sports or prefer other clubs and societies, you'll find plenty of opportunities to make new friends and enjoy campus life.

Other
ways that
students
live life to
the max is
through:



Freshers' Fair



RAG Fundraising



Summer Ball



Winter Ball



Presentation of
Awards Ceremony

BeMore

BeMore encourages our staff and students to push beyond their limits in academics, competitions, career opportunities, and personal growth.

We celebrate these achievements through initiatives like Student of the Term presentations and our annual Presentation of Awards ceremony. We are proud to share our stories highlighting successes in various areas from career journeys to community work and competition wins.



Societies



Sports Clubs

Reaseheath Students' Union Societies:

Animal Enrichment, Training and Volunteering Society
 Avian Society
 Aquatics Society
 Book Society
 Canine Society
 Communications Society
 Conservation Society
 Craft Society
 Entertainments Society
 Equine Society
 Green Fingers Society
 Fantasy Society
 Farmers Society
 Herpetological & Entomological Society
 International Society
 LGBTQ+ Society
 Mature Society
 Photography Society
 Raising and Giving Society.

Apprenticeships



APPRENTICESHIPS AT REASEHEATH COLLEGE PROVIDE THE IDEAL COMBINATION OF EARNING AND LEARNING. GAIN A NATIONALLY RECOGNISED INDUSTRY QUALIFICATION, DEVELOP ESSENTIAL WORKPLACE SKILLS, AND EARN A WAGE—ALL WHILE TRAINING IN THE SKILLS THAT EMPLOYERS DEMAND.

With apprenticeships, you can shape your future. Whether you choose to continue with your employer or move on to higher

education, the path is yours. Most of your time is spent on the job, with dedicated days at Reaseheath for hands-on training.

You will get:	Level:	Entry requirements:	Length:
Intermediate Apprenticeship (equivalent to five good GCSE passes)	2	You might not need any qualifications to start, but you will need to be over 16 years old and have the ability to complete the programme.	12-18 months
Advanced Apprenticeship (equivalent to two A Level passes)	3	To start this programme, you usually need five good GCSEs grade 9-4 or to have completed an Intermediate Apprenticeship. If you have A Levels you might still need to start at this level to get experience of the job.	18-48 months
Higher or Degree Apprenticeships (equivalent to a Foundation Degree)	4-7	To start this programme, you usually will have completed an Advanced Apprenticeship or have done a Level 3 course such as BTEC or A Levels.	24+ months



If you're 16 or older and working 30+ hours a week, you can begin your apprenticeship with us. You'll receive guidance from a dedicated Skills Coach and access to college transport or accommodation, depending on your schedule. Reaseheath apprenticeships are your gateway to a successful career.

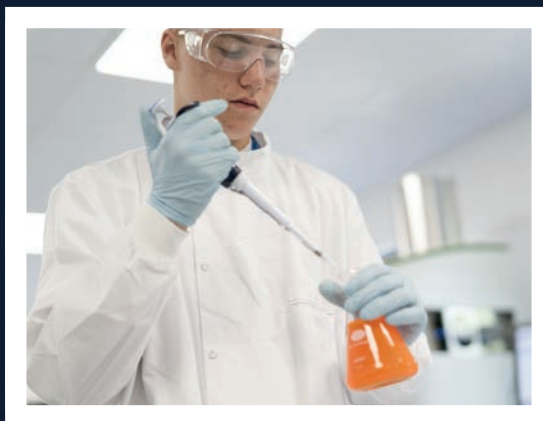


What are T LEVELS?

NEW T LEVELS FOR 2025:

- Marketing
- Horticulture & Landscaping

T Levels are cutting-edge, two-year courses designed for students to take after completing their GCSEs. Equivalent to three A Levels, T Levels have been developed in collaboration with employers and educators to meet the current demands of industry, ensuring that students are fully prepared for skilled employment, apprenticeships, or further technical studies.



Reaseheath College offers T Levels in various fields, including Management and Administration, Design, Surveying and Planning, Food Science, Land-based Engineering, Tree and Woodland Management, Agriculture, Animal Management, Marketing and Horticulture & Landscaping. These courses are supported by businesses, ensuring you gain valuable experience and UCAS points, making T Levels a strong pathway to both employment and higher education.

At Reaseheath College, T Levels combine practical and knowledge-based learning with real-world experience through an industry placement of at least 315 hours [around 45 days]. You'll spend 80% of your time in the classroom and 20% gaining hands-on experience with an employer, developing the skills and knowledge that industries are actively seeking.

Benefits of completing a T LEVEL at Reaseheath:

EQUIVALENT TO 3 A LEVELS

45 day industry placement



Strong support from businesses

80%

CLASSROOM LEARNING

20%

WORK EXPERIENCE

T Level UCAS Tariff Points:

Distinction* (168 points)

Distinction (144 points)

Merit (120 points)

Pass (96 points with C or above, 72 points with D or E)



Industry Focused, Career Ready

At Reaseheath College, we ensure students gain real-world experience and build strong industry connections through internships, work placements, and industry-led projects with leading businesses. Our alumni network, featuring successful professionals across various

industries, serves as mentors, providing invaluable guidance to current students as they navigate their paths to success.

Here is just a taster of some of the ways we're developing Industry Focused, Career Ready students.



Equine Students Impress at HOYS

The 2024 Horse of the Year Show saw our students shine at the event's 75th anniversary. A 40-strong student arena party worked with elite show jumping designers, ensuring smooth event transitions and earning high praise.



Floristry Students Honoured

Reaseheath floristry students Maya Twigg and James Jones were recognised as industry ambassadors at the National Florist Day launch. They attended an exclusive event at The Dorchester, London, mingling with top industry influencers, an invaluable networking experience.



Motor Vehicle Students Gain Real-World Experience

Motor Vehicle students collaborated with Macclesfield-based RRG Group to gain insights into automotive dealership operations. They engaged in role-playing scenarios and explored career opportunities in the industry, gaining valuable real-world experience.



Apprentice Stars Recognised

Hasan Girach, a Bus and Coach Engineering Technician with First Bus, won the Principal's Award and Transport Engineering Apprenticeship of the Year at Reaseheath College's annual apprenticeship awards. His progression towards becoming an engineering director exemplifies the success of the college's apprenticeship programme.



Bioblitz Reveals Biodiversity

Our conservation students teamed up with RECORD, Cheshire's leading environmental data centre, for a bioblitz to assess biodiversity at the college's Local Wildlife Site. This hands-on research experience equipped the students with practical skills for careers in ecology and conservation.



A Rising Star in Agriculture

Cerys Fairclough, a Level 3 Advanced Technical Extended Diploma in Agriculture graduate, has made a successful transition from student to professional in the farming industry. She currently works as a National Hardware Sales Co-ordinator at Wynnstay Group and is also pursuing a business degree and developing her own breeding flock of Blue Faced Leicester sheep.



A Rising Star in Racehorse Training

Hannah Roach, a Level 2 Horse Care Apprenticeship graduate, has made a remarkable start to her career as a racehorse trainer. She has achieved an impressive 65% strike rate in her first full season. Hannah's apprenticeship provided her with the skills and knowledge she needed to succeed in the industry, and she is passionate about her work with racehorses.

Adventure SPORT

ARE YOU A THRILL SEEKER? DO YOU ENJOY BEING OUTDOORS? PURSUE A CAREER IN SOMETHING THAT YOU LOVE WITH OUR ADVENTURE SPORTS COURSE.

Take on new challenges as you get ready for your thrilling career in the fast-paced outdoor activity industry. You will develop your practical skills and experience new heights with exhilarating activities such as mountaineering, climbing, mountain biking, canoeing and kayaking.

Our campus is situated close to some fantastic adventure destinations, including The Roaches, North Wales and The Peak District. You may also have the opportunity to go further afield on one of our exciting study tours.



CAREER OPTIONS

**OUTDOOR INSTRUCTOR
IN BRITAIN OR ABROAD,
PROFESSIONAL
ADVENTURE SPORT
ATHLETE, EXPEDITION
LEADER, ADVENTURE
SPORTS COACH.**

Experienced outdoor activities instructors earn an average of **£30,000** a year*

*Source: National Careers Service



NAME: Emma Steele

STUDIED: Adventure Sport

JOB TITLE: Trainee
Instructor at Bryntysilio
Outdoor Education Centre

“

Reaseheath offered me everything I wanted. The practicals are the best part of the course – going out, learning new skills, exploring new places. The campus was great, always something going on. But it was my lecturers who made my time at Reaseheath 100% worth it.

”

4

REASONS TO STUDY ADVENTURE SPORT WITH US

1 PRACTICE YOUR SKILLS

Gain experience in an excitingly wide range of outdoor activities including climbing, mountaineering, canoeing, kayaking, and mountain biking.

2 GAIN ADDITIONAL QUALIFICATIONS

Have the chance to achieve National Governing Body Awards from well-recognised organisations such as The British Canoe Union, British Cycling, and Mountain Training.

3 EXCELLENT FACILITIES

Learn using our high-quality facilities such as our on-site climbing wall, a high and low ropes course, bushcraft area and altitude chamber.

4 AMAZING STUDY TOURS

See more of the world with our incredible study tours, which in the past have included skiing and snowboarding in the Alps, crewing a yacht to France, and winter mountaineering in the Scottish Highlands.



Courses AVAILABLE

Level 1 Vocational Studies – Sport & Public Services

Level 2 Adventure Sport

Level 3 Sport & Outdoor Activities

Agriculture



WOULD YOU LIKE TO LEARN HOW TO SHAPE THE FUTURE OF FARMING AND FOOD PRODUCTION, AT A COLLEGE WHICH HAS BEEN TEACHING AGRICULTURE COURSES FOR OVER 100 YEARS?

By studying an agriculture qualification at Reaseheath College, you will have access to state-of-the-art resources on our 252-hectare commercial and training farm, including our new automated robotic milking system and data centre, and gain practical experience with our dairy cows, youngstock, sheep flock, and tractor operations.

You will learn about technological advancements in robotic milking, precision farming, data analysis, and sustainable livestock production, and enjoy unique insights and experiences off campus by visiting farms and businesses. You will also complete a work placement, and gain additional qualifications such as safe use of veterinary medicine and pesticide application, to make you and your CV stand out.

CAREER OPTIONS

SENIOR FARM MANAGER, DAIRY HERD MANAGER, GENETICS SPECIALIST, ANIMAL HEALTH OR FEED SPECIALIST, MACHINERY OPERATOR, LIVESTOCK NUTRITIONIST.

Experienced argonomists earn an average of **£60,000** a year*

*Source: National Careers Service



NAME: Jess Turner

STUDIED: Advanced Technical Extended Diploma Livestock;

NEXT STEP: Agriculture Undergraduate

“

The college has an impressive balance of providing learning experience, whilst having fun. I am so grateful for the memories and the life-long friends I have made during my time studying here. I truly believe that experiencing Reaseheath will help me as I move onto the next steps of my career at university.

”

4

REASONS TO STUDY AGRICULTURE WITH US

1 GAIN EXTRA QUALIFICATIONS

Study for extra qualifications in areas such as foot trimming, safe use of veterinary medicine, and pesticide application, to make you and your CV stand out.

2 LEARN USING THE BEST EQUIPMENT

We are using government investment to develop our commercial farm and Agri-Technology Centre to integrate further state-of-the-art technologies, machinery and equipment, including GPS and robotic systems for data collection and research.

3 PREPARE FOR WORK IN THE INDUSTRY

Gain lots of practical experience working with our dairy cows, support lambing our sheep flock, and work hands-on with tractor operations to gain well-rounded skills needed for the industry.

4 PRACTICAL WORK EXPERIENCE

Complete work experience during your course for a valuable insight into the agricultural industry and to enhance your CV, to further increase your employment prospects.

Courses

AVAILABLE

Level 2 Technical Certificate in Agriculture

Level 2 Apprenticeship in General Farm Work

Level 3 Apprenticeship Livestock Unit Technician

T Level Agriculture - Livestock Production

**PROGRESS
ONTO A
DEGREE AT
UNIVERSITY
CENTRE
REASEHEATH**

After completing your course, you may decide to develop your skills further and continue your studies with us. Why not find out more about our degree in Sustainable Agriculture where you could specialise in either Livestock Management, Crop Management or Dairy Herd Management? Visit: ucreaseheath.ac.uk

Agricultural ENGINEERING

LEARN ALL ABOUT THE ADVANCED TECHNOLOGY NEEDED TO MAINTAIN COMPLEX TRACTORS AND AGRICULTURAL MACHINERY, ALONGSIDE A 315-HOUR INDUSTRY PLACEMENT, OVER THIS TWO-YEAR LAND-BASED ENGINEERING T LEVEL.

When at college, you'll be based in our amazing Agri-Tech facility, developed in partnership with major agricultural companies, such as New Holland, CLAAS UK, Case IH and JCB. You will develop your technical knowledge and practical ability in the maintenance of agricultural machinery using the latest diagnostic equipment.

You may also be given the opportunity to visit fantastic shows and exhibitions such as LAMMA and gain first-hand experience to help boost your knowledge within the industry.

CAREER OPTIONS

TEST ENGINEER, PRECISION FARMING ENGINEER, TECHNICAL SERVICE ENGINEER, TECHNICAL PARTS SPECIALIST, DESIGN AND DEVELOPMENT ENGINEER.

Experienced agricultural engineers earn an average of **£45,000** a year*

*Source: National Careers Service



NAME: Endaf Owen

STUDIED: Technical Baccalaureate, Land-based Engineering

NEXT STEP: Engineering Undergraduate

“

I came to college with a love for tractors but very little knowledge of engineering, thankfully the tutors explained everything thoroughly and were very helpful if we had any questions. The practical and theory elements of the course were very enjoyable, although I personally enjoyed more of the theory lessons. I leave Reaseheath with a newfound passion for engineering and will continue to pursue this passion at university level.

”

4

REASONS TO STUDY AGRICULTURAL ENGINEERING WITH US

1

DEVELOP YOUR PRACTICAL SKILLS

Develop your technical knowledge and practical ability in the maintenance of agricultural machinery using the latest diagnostic equipment.

2

ENJOY STUDY TOURS

Have the chance to visit fantastic shows and exhibitions such as LAMMA for first-hand experience needed to boost your knowledge within the industry.

3

OUTSTANDING FACILITIES

Learn your skills in our outstanding Agri-Tech training facility, with electronic diagnostic equipment, hydraulic training rigs, electronics lab and industry standard workshops.

4

BENEFIT FROM OUR INDUSTRY LINKS

We're the preferred training provider for local, national and international companies including JCB, Case IH, CLAAS UK and New Holland, and they look to us when recruiting newly qualified engineers.



Courses

AVAILABLE

Level 2 Land-based Engineering

T Level Land-based Engineering

Animal MANAGEMENT

CRAZY ABOUT ANIMALS? TAKE A WALK ON THE WILD SIDE AT OUR ANIMAL CENTRE AND ZOO!

You'll be based at one of the most fantastic, purpose-built animal centres in the UK with a licensed teaching zoo and laboratories.

You'll have the chance to work with around 200 species including meerkats, lemurs, otters, bush dogs, capybara, fish, amphibians, pygmy marmosets, along with companion and park animals, plus an opportunity to visit some of the UK's leading zoos and wildlife parks. Whatever your interests, you'll be encouraged to gain as many experiences as possible and to explore the range of exciting and varied careers on offer.



NAME: Greg Clifton

STUDIED: Zoo Management

JOB TITLE: Section Manager, Primates and Carnivores, Yorkshire Wildlife Park

CAREER OPTIONS

**ANIMAL
CONSERVATIONIST,
ANIMAL BEHAVIOURIST,
ANIMAL NUTRITIONIST,
ANIMAL
PHYSIOTHERAPIST,
ZOOLOGIST.**

Experienced zoologists earn an average of **£48,000** a year*

*Source: National Careers Service

Reaseheath wasn't just a place to study – it became home to me. I loved the social life, and the facilities across the college and at the animal centre were amazing. But it was the staff I found most inspiring, particularly as many of them already had experience in the industry. They really helped me decide where I wanted to go in life.

”

4

REASONS TO STUDY **ANIMAL MANAGEMENT WITH US**

1 EXCELLENT FACILITIES

On-site we have an animal centre and licenced zoo, outdoor and indoor enclosures plus reptile, amphibian, fish and companion animal sections. We also have kennel blocks and indoor and outdoor training arenas.

2 INDUSTRY FOCUSED COURSES

Our courses are industry focused, so you'll have lots of opportunities for research and work experience to make your CV stand out from the crowd.

3 WE'LL GET YOU CAREER READY

Become career ready by gaining useful tips and information from inspirational speakers and former students, supported by tutors and keepers with industry experience.

4 REAL LIFE EXPERIENCE

Specialise in animal behaviour or science based on your career ambitions with our T Level courses where you'll gain hands-on experience with our collection of over 1,000 mammals, amphibians, reptiles, birds, and fish in our on-site mini zoo.



Courses **AVAILABLE**

Level 2 T Level Transition in Animal Management

Level 2 Apprenticeship in Animal Care & Welfare

T Level Animal Management & Behaviour

T Level Animal Management & Science

**PROGRESS
ONTO A
DEGREE AT
UNIVERSITY
CENTRE
REASEHEATH**

After completing your course, you may decide to develop your skills further and continue your studies with us. Why not find out more about degrees in Animal Behaviour and Welfare, Wildlife Conservation and Ecology, Canine Behaviour, Zoo Management and Applied Zoology? Visit: ucreaseheath.ac.uk

Bakery,

CONFECTIONERY & PÂTISSERIE

IF PÂTISSERIE IS YOUR PASSION, OR YOU JUST LOVE TO BAKE, THEN WHY NOT TURN YOUR HOBBY INTO A CAREER BY STUDYING A BAKERY COURSE AT REASEHEATH COLLEGE.

During your studies, you will spend time in our bespoke bakery, being taught by highly professional staff from varying baking backgrounds. No two days will be the same on this course; one day you may be perfecting your chocolate-making skills, the next you may be kneading dough.

Whilst you will be learning the set skills and knowledge of the kitchen, you will also be given plenty of room to get creative and explore new product development. In addition to spending time in our food centre, you will also get to enjoy trips to UK-based companies.

CAREER OPTIONS

**BAKERY ENGINEER,
ARTISAN BAKER,
PÂTISSERIE CHEF,
BAKERY OPERATIVE,
CAKE DECORATOR.**

Experienced bakers earn an average of **£26,000** a year*

*Source: National Careers Service



NAME: Charlotte Lawler

STUDIED: Professional Bakery

JOB TITLE: Cake Business Owner

“

A lot of my success is because our lecturers taught us commercial skills as well as supporting us through the actual baking, modelling and cake decorating. Their experience was a great help, and I've used every skill I was taught.

”

4

REASONS TO STUDY **BAKERY, CONFECTIONERY & PÂTISSERIE** **WITH US**

1 **BECOME CAREER READY**

Complete a relevant work placement with a bakery of your choice for extra skills and experience to make you and your CV stand out from the crowd.

2 **ENJOY STUDY TOURS**

Enhance your learning with study tours to UK companies for behind-the-scenes visits to large artisan bakeries and learn from lectures from internationally recognised cake designers.

3 **OUTSTANDING FACILITIES**

Our British Retail Consortium Grade AA commercial bakery has everything you would expect within large scale manufacturing, so it's the perfect place to develop your skills.

4 **GAIN ADDITIONAL CERTIFICATES**

Enhance your CV by completing additional certificates in food safety and health, risk assessment and HACCP safety.



Courses

AVAILABLE

Level 1 Food Industry Skills

Level 2 Professional Bakery

Level 3 Professional Bakery

Level 2 Apprenticeship in Bakery

Business

ARE YOU A BUDDING ENTREPRENEUR OR DO YOU HAVE A PASSION FOR MARKETING? IF SO, EITHER OUR T LEVEL IN MANAGEMENT AND ADMINISTRATION OR T LEVEL IN MARKETING WOULD BE PERFECT FOR YOU.

With volunteer opportunities and work placements, not only will you become book smart, but you will gain hands-on industry experience too.

Alongside your studies, you will gain insights and top tips from inspirational speakers on campus and during insightful and thrilling residential tours, for example the Business Live Conference in Disneyland Paris, and trips to New York, London, or Berlin.

CAREER OPTIONS

BUSINESS MANAGER, MARKETING AND SOCIAL MEDIA MANAGER, HUMAN RESOURCES MANAGEMENT, PROJECT MANAGER/COORDINATOR, FINANCE MANAGER/COORDINATOR, TEAM LEADER, FINANCE AND PROJECTS.

Salary info:

Business project managers earn an average of **£75,000 a year***

*Source: National Careers Service



NAME: Ffion Roberts

STUDIED: Management and Administration T Level

JOB TITLE: Degree Apprentice, Airbus Broughton

“

The practical approach at Reaseheath gave me a real-world perspective that aligned with my career goals. I loved the engaging discussions we had in class and the course gave me the opportunity to gain valuable work experience through an industry placement that later gave me skills that aligned with my interests.

”

4

REASONS TO STUDY BUSINESS WITH US

1 ENJOY STUDY TOURS

Learn more about the industry with study tours to London, Berlin, New York or the Business Live Conference in Disneyland Paris, as well as educational visits to venues such as Chester Zoo, JCB, and the Houses of Parliament.

2 WORK WITH INDUSTRY PROFESSIONALS

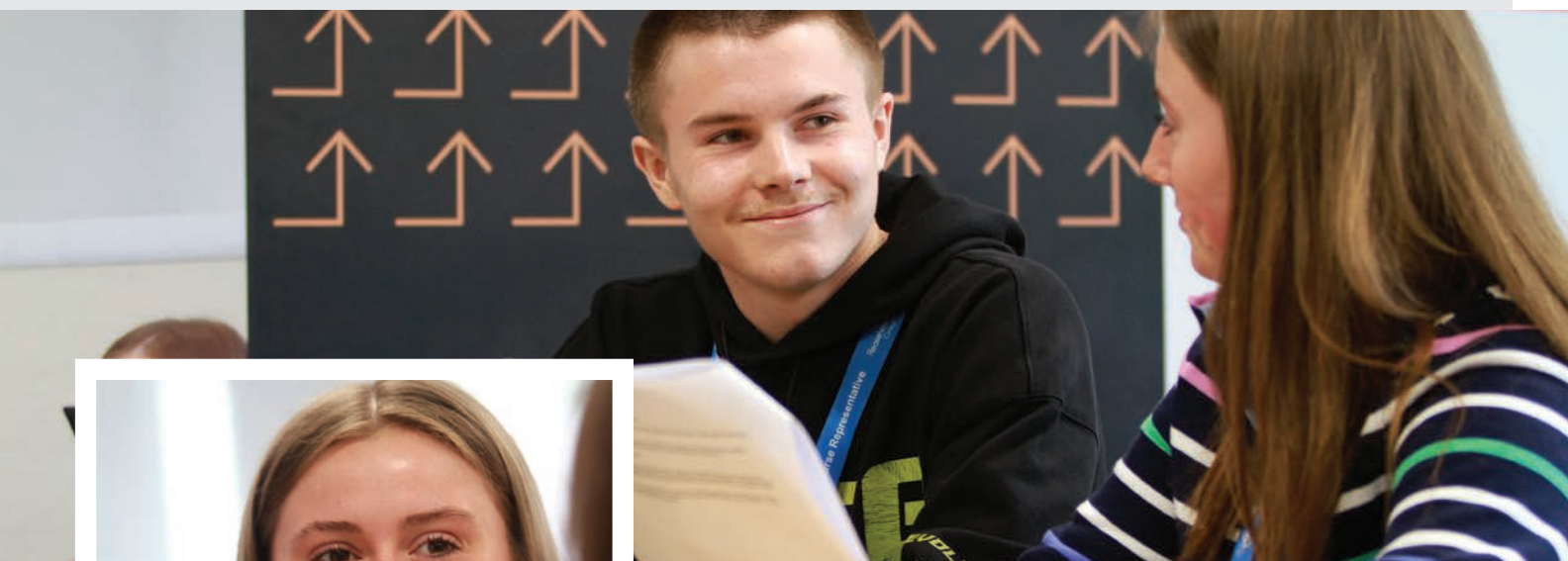
Our links with key business professionals, such as John Lewis and AO, means you'll gain real industry insight and be able to benefit from work experience opportunities.

3 PRACTICAL WORK EXPERIENCE

As part of your T Level studies, you will complete a work placement for a total of 315 hours, which is a great opportunity to gain essential experience and to put what you learn at college into practice. It looks great on your CV too!

4 HIGHLY EXPERIENCED LECTURERS

Our teaching staff have a wealth of industry knowledge and experience to pass on to you, and are dedicated to ensuring that you become ready for your future career.



Courses AVAILABLE

T Level Marketing

T Level Management & Administration

Level 2 T Level Transition in Management & Administration. You can progress onto either T Level once completing this transition programme

ENVIRONMENTAL Conservation

IF YOU WANT TO HELP PROTECT THE UK'S NATURAL ENVIRONMENT AND YOU'RE KEEN TO WORK OUTDOORS, AN ENVIRONMENTAL CONSERVATION COURSE AT REASEHEATH IS FOR YOU!

Studying amongst 330 hectares of farms, parklands, lake and woodland you will have plenty of opportunities to develop your practical skills on campus, while also carrying out coastal habitat surveys, undertaking woodland management and working with local communities on a host of outreach projects.

You'll also have the chance to go on field trips, complete an industry relevant work placement and gain additional industry qualifications, all of which will give you valuable experience for your CV.

CAREER OPTIONS

RANGER CONSERVATION ASSISTANT, ENVIRONMENTAL ECOLOGIST, FOREST SCHOOLS PRACTITIONER, COUNTRYSIDE CONTRACTOR, ENVIRONMENTAL PROJECT MANAGER, GAME KEEPER.

Experienced ecologists earn an average of **£42,000** a year*

*Source: National Careers Service



NAME: Rhian Tyne

STUDIED: Level 3 Technical Baccalaureate in Land and Wildlife Management

JOB TITLE: Trainee Wildlife Ranger, Forestry England

“

My job is incredibly diverse and involves a lot of conservation work. My primary role is to help manage fallow and muntjac deer populations but I'm also involved in conserving a huge range of other species such as red kites, dormice and bats. The skills, knowledge and support I'd gained from college helped me to stand out when I applied for my current role.

”

4

REASONS TO STUDY ENVIRONMENTAL CONSERVATION WITH US

1 BE SURROUNDED BY NATURE

We are the perfect place to study your Conservation course, as we have a wide range of nature and wildlife for you to explore, right here on campus.

3 HIGHLY EXPERIENCED LECTURERS

Learn from highly experienced lecturers who have lots of industry knowledge to share with you.

2 BECOME CAREER READY

Complete relevant study tours, work placements and extra qualifications alongside your course for additional experience to prepare you for a successful career in the industry.

4 WORK WITH INDUSTRY PROFESSIONALS

Benefit from our strong links with leading organisations such as Groundwork, Natural England, Environment Agency and RSPB.

Courses AVAILABLE

Level 2 Technical Certificate in Land and Wildlife

Level 3 Diploma in Land and Wildlife Management

Level 3 Technical Baccalaureate in Land and Wildlife Management

**PROGRESS
ONTO A
DEGREE AT
UNIVERSITY
CENTRE
REASEHEATH**

After completing your course, you may decide to develop your skills further and continue your studies with us. Why not find out more about degrees in Environmental Conservation or Wildlife Conservation and Ecology? Visit: ucreaseheath.ac.uk

Construction

TRADES



IF YOU'RE INSPIRED BY THE PLACES WHERE WE LIVE, WORK, TRAVEL AND PLAY, THE CONSTRUCTION INDUSTRY IS LOOKING TO RECRUIT YOUNG PEOPLE WITH RECOGNISED TRADE QUALIFICATIONS AND THE SKILLS THAT COUNT.

As a Reaseheath construction student you can build a range of specific skills in one of three distinct trade areas; joinery, plastering or bricklaying.

Our industry-led full-time and apprenticeship courses are the perfect foundation for a rewarding career as you will learn your craft alongside industry professionals. If you want to make a lasting impact by building functional and sustainable environments for an expanding population - your future starts with us!

CAREER OPTIONS

**SITE JOINER,
BRICKLAYER, PLASTERER.**

Experienced bricklayers earn an average of **£40,000** a year*

*Source: National Careers Service



NAME: Will Fildes

STUDIED: Carpentry and Joinery; On-site Carpentry

JOB TITLE: Site Joiner with Total Care Building and Maintenance Ltd

“

I learned the skills for my trade by progressing up the levels. The department has many industry links, and I was introduced to Total Care for my first year's work placement. I continued working for the company alongside my college training and now have a permanent job.

”

4

REASONS TO STUDY CONSTRUCTION TRADES WITH US

1 GAIN ADDITIONAL QUALIFICATIONS

Have the chance to gain the Construction Skills Certification Scheme, which proves you have the qualifications needed to work on-site. You won't get a job with a recognised company without one!

3 BENEFIT FROM INDUSTRY LINKS

You'll benefit from our links with leading national and international companies and gain valuable insight with on-site visits and trips to building shows such as Eco Build and The Skills Show.

2 OUTSTANDING FACILITIES

You'll become career ready by learning your trade in bespoke, spacious workshops that are stocked with top quality equipment.

4 BECOME CAREER READY

Once you have passed your studies with us you will be a qualified tradesperson, able to work in your chosen industry in a variety of different locations and workplaces.



Level 1	Diploma in Brickwork
Level 1	Diploma in Joinery
Level 1	Diploma in Plastering
Level 2	Diploma in Brickwork
Level 2	Diploma in Joinery
Level 2	Diploma in Plastering
Level 2/3	Apprenticeships in Construction (brickwork or carpentry and joinery)

Courses AVAILABLE

Construction

DESIGN, SURVEYING & PLANNING

IF SHAPING THE BUILT ENVIRONMENT EXCITES YOU, WHY NOT CONSIDER A T LEVEL IN DESIGN, SURVEYING AND PLANNING AT REASEHEATH COLLEGE?

In just two years, you'll gain essential skills and hands-on experience in architecture, surveying, and planning, thanks to a course designed with top employers. One week, you might be creating industry-standard sketches, the next, working on a tender, researching a mock court case, or gathering site data. Reaseheath College will equip you with the expertise needed for a successful career in the construction industry.

CAREER OPTIONS

PROJECT MANAGER, ARCHITECT, QUANTITY SURVEYOR, HEALTH AND SAFETY MANAGER.

Experienced quantity surveyors earn an average of **£80,000** a year*

*Source: National Careers Service



NAME: Kate Cole

STUDIED: Construction and the Built Environment

JOB TITLE: Rural Land Agent and Surveyor

“

I felt studying at Reaseheath would give me the best introduction to the built environment, and it's taken me further than I ever thought possible.

”

4

REASONS TO STUDY CONSTRUCTION DESIGN, SURVEYING & PLANNING

WITH US

1 HIGHLY EXPERIENCED STAFF

You will be well supported by our team of highly qualified staff with extensive industry experience, all dedicated to helping you to achieve your career goals.

2 OUTSTANDING FACILITIES

Perfect your skills in our state-of-the-art Construction Centre and Innovation Hub, with modern workshops, classrooms and specialist equipment.

3 DESIGNED WITH EMPLOYERS

Our T Levels have been designed with employers to teach you core knowledge and skills, for example in research, problem solving, solution-development, communication and collaboration.

4 HIGH-QUALITY EQUIPMENT

Thanks to our partnerships with leading businesses, you will benefit from top-quality materials and resources, and high-tech equipment such as VR headsets, due to our involvement in the Advanced Construction Training project.



Courses

AVAILABLE

Level 2 T Level Transition - Design, Surveying & Planning

T Level Design, Surveying & Planning

Engineering



IF WORKING WITH BIG AND COMPLEX MACHINERY SOUNDS LIKE THE ROUTE FOR YOU, WHY NOT CONSIDER AN ENGINEERING APPRENTICESHIP WITH REASEHEATH COLLEGE?

You will become career ready in no time by accessing high-quality training and learning with state-of-the-art technologically advanced machinery and equipment. Whether it be agricultural, construction plant, bus or rail industries you have an interest in, studying in the Agri-Tech Centre or Reaseheath Engineering Apprenticeship Academy will help you to get off to a flying start.

Reaseheath College works with over 80 companies, such as JCB Dealerships, The Gap Group and Alstom, so it's guaranteed you will be placed in knowledgeable and experienced hands, paving the way for a bright future.

CAREER OPTIONS

BUS AND COACH SPECIALIST, AUTO ELECTRICIAN, CONSTRUCTION PLANT MECHANIC, RAIL MAINTENANCE TECHNICIAN, FORKLIFT TRUCK TECHNICIAN, RECYCLING INDUSTRY ENGINEER.

Experienced construction plant mechanics earn an average of **£35,000** a year*

*Source: National Careers Service



NAME: Grace Cartwright

STUDIED: Land-based Engineering

NEXT STEP: Motorsport Engineering Undergraduate

“

I embraced the challenge of working and gaining knowledge within an unknown engineering sector, and was supported by the engineering stores team and my course manager who helped me gain knowledge and experience to succeed.

”

4

REASONS TO STUDY ENGINEERING WITH US

1 DESIGNED WITH EMPLOYERS

Our apprenticeships have been designed with a wide range of employers to ensure you gain the skills and technical know-how needed by the industry.

2 INDUSTRY EXPERIENCE

Our staff have extensive industry experience and collaborate with leading manufacturers, which helps to keep you up to date with the latest advancements in the sector.

3 MODERN FACILITIES

Our advanced Engineering and Agri-Tech Centre is a multi-million-pound technical training facility with electronic diagnostic equipment, hydraulic training rigs, electronics lab, and industry-standard workshops.

4 EARN WHILE YOU LEARN

By completing an engineering apprenticeship, you will gain on-the-job training while earning a wage, to fast-track your career in the construction plant, rail, bus or agricultural engineering industries.



Courses AVAILABLE

Level 3 Apprenticeship in Land-based Engineering

Level 3 Apprenticeship in Bus & Coach Engineering

Level 3 Apprenticeship in Construction Plant

Level 3 Apprenticeship in Rail Engineering

Equine



IF YOU'RE PASSIONATE ABOUT HORSES AND WANT TO LEARN ALL ASPECTS OF THE MODERN-DAY EQUINE INDUSTRY, STUDYING EQUINE WOULD BE A GREAT CHOICE FOR YOU.

The experience you gain at Reaseheath will prepare you well for employment, from working towards extra qualifications including British Horse Society stages, to completing work placements and study tours, and becoming part of our arena party to support world-class events such as the Horse of the Year Show and the British Dressage National Championships. On campus, you can join our weekly riding lessons with our skilled coaches to develop your riding ability, or if you would prefer not to ride, you can concentrate on other modules such as equine business or principles of competition grooming.

As these courses are A Level equivalent, you will have plenty of varied and rewarding career options open to you after you complete your course or you could choose to progress onto degree level study, for example at University Centre Reaseheath, to specialise in your chosen area of the equine sector.

CAREER OPTIONS

NUTRITIONIST, ELITE COMPETITION GROOMING, PHYSIOTHERAPIST, PROFESSIONAL RIDER OR COACH, PRODUCT DESIGNER AND MANUFACTURER, YARD MANAGEMENT, MEDIA AND MARKETING

Did you know? Experienced equine nutritionists can earn between **£35,000** and **£50,000** a year*

*Source: prospects.ac.uk



NAME: Samantha Stevens

STUDIED: Horse Management

JOB TITLE: Content Creator, Equerry Consulting

“

Studying at Reaseheath really gave me confidence in what I was doing, and the access it gave me to industry experts gave me a real overview of the career paths I could take in this industry – it's not only working in stables, there's a huge, world-wide industry out there in equine, and Reaseheath gave me access to that.

”

4

REASONS TO STUDY EQUINE WITH US

1 OUTSTANDING FACILITIES

Study at our highly commended BHS-approved Training and Assessment Centre with outstanding facilities such as a modern indoor arena, two outdoor arenas, riding simulator, show jumps, horse walker, solarium, equissage massage machine, and much more.

2 LEARN FROM INDUSTRY PROFESSIONALS

Learn from our expert staff, many of whom have elite international experience, as well as world-renowned industry professionals through lectures, demonstrations and industry visits.

3 ENHANCE YOUR CV

Complete work placements and study tours, become part of our arena party to support world-class events, and train for extra qualifications such as British Horse Society exams to enhance your CV.

4 YOU CAN BRING YOUR HORSE WITH YOU!

We have a range of livery packages available, so you and your horse will have access to our excellent range of facilities, on-site competitions and training opportunities with resident coaches and visiting professionals.

Courses AVAILABLE

Level 2 Apprenticeship in Equine

Level 2 Horse Care

Level 3 Horse Management

Level 3 Technical Baccalaureate in Equine Management



**PROGRESS
ONTO A
DEGREE AT
UNIVERSITY
CENTRE
REASEHEATH**

After completing your course, you may decide to develop your skills further and continue your studies with us. Why not find out more about degrees in Bioveterinary Science, Equine Behaviour & Welfare, or Equine Training & Rehabilitation? Visit: ucreaseheath.ac.uk



Floristry

IF YOU LOVE FLOWERS AND PLANTS AND HAVE ARTISTIC AND CREATIVE FLAIR, A FLORISTRY COURSE AT REASEHEATH IS FOR YOU!

You'll learn your floral design skills in our dedicated studios within our award-winning floristry department and be encouraged to develop your creativity by foraging in the grounds of our beautiful campus, home to a spectacular range of flowers, foliage and natural art forms. You'll also complete relevant work experience and, at college, produce designs for clients under supervision.

You may also work in our local community, preparing displays for hospices, stately homes and flower festivals, or enjoy behind-the-scenes visits to floristry shows and businesses. Additionally, you could compete in national competitions such as WorldSkills UK or be on a medal-winning team at the RHS Flower Show Tatton Park or RHS Chelsea Flower Show.

CAREER OPTIONS

FLORISTRY SHOP OWNER, WEDDING AND PARTY SPECIALIST, FLORAL DECORATING TEAM MEMBER, DEMONSTRATOR, CRUISE SHIP FLORIST, STAFF FLORIST AT PRESTIGIOUS HOTEL, SPECIALIST GROWER.

As a self-employed florist, there is **NO LIMIT** to the amount you can earn!



NAME: Daisy Annandale

STUDIED: Floristry

JOB TITLE: Florist at Flores Diem

“

I enjoyed studying floristry at Reaseheath because everyone is passionate about the same thing and the lecturers help you to be the best you can be. I also loved the campus because it is a very peaceful and safe environment.

”

4

REASONS TO STUDY FLORISTRY WITH US

1 HIGHLY ACCLAIMED DEPARTMENT

Learn your floral design skills in our dedicated studios within our award-winning floristry department and be encouraged to develop your creativity by foraging in the grounds of our beautiful campus, home to a spectacular range of flowers, foliage and natural art.

2 BECOME CAREER READY

Complete relevant work experience as well as practice producing designs for clients under supervision at college.

3 GAIN EXTRA PRACTICAL EXPERIENCE

Work in our local community, preparing displays for hospices, stately homes and flower festivals, or enjoy behind-the-scenes visits to floristry shows and businesses.

4 TEST YOUR SKILLS AT NATIONAL COMPETITIONS

Have the chance to compete in national competitions such as WorldSkills UK or be on a medal winning team at the RHS Flower Show Tatton Park or RHS Chelsea Flower Show.



Courses AVAILABLE

Level 2 Floristry

Level 3 Floristry

Food

TECHNOLOGY

DO YOU ASPIRE TO BE PART OF THE UK'S LARGEST MANUFACTURING INDUSTRY? WELL, LOOK NO FURTHER. OUR FOOD SCIENCE & TECHNOLOGY COURSES WILL EQUIP YOU WITH THE SKILLS AND KNOWLEDGE YOU NEED.

Our commercial Food Centre is considered to be amongst the best of any college in the world, so your training will be of the highest quality. Studying Food Science and Technology, you will be a part of a dynamic and thriving sector, and you will gain an understanding of the ever-changing consumer needs, nutrition and even global challenges.

On top of practical lessons, you will join study tours, get involved in a variety of projects and go behind-the-scenes at several companies, as well as experience working with one of our partners for example Sainsbury's, Premier Foods, Co-op, and Heineken.

CAREER OPTIONS

**LAB TECHNICIAN,
PRODUCTION OPERATIVE,
FOOD LOGISTICS,
INGREDIENT AND
PACKAGING BUYER,
FOOD NUTRITIONIST,
ENVIRONMENTAL HEALTH
OFFICER**

Experienced food scientists earn an average of **£45,000** a year*

*Source: National Careers Service



NAME: Hannah Johnson

STUDIED: Artisan Food Production

JOB TITLE: Production Manager, Dalton's Dairy

“

The highlight of my studies was becoming confident using the industry standard equipment in Reaseheath's Food Centre. The processing halls are run as a small-scale factory and give you experiences which you wouldn't get elsewhere. The skills and extra industry certificates I gained prepared me well for my degree and I was offered my job as soon as I graduated.

”

4

REASONS TO STUDY

FOOD TECHNOLOGY WITH US

1 OUTSTANDING FACILITIES

Learn in our industry standard commercial Food Centre, which holds the globally recognised British Retail Consortium Grade AA+ certification for food safety.

2 ENHANCE YOUR CV

Gain extra qualifications in key subjects such as health and safety, food safety, risk assessment and HACCP to make you and your CV stand out.

3 WORK WITH INDUSTRY PROFESSIONALS

Complete your industry placement with one of our regional and national industry partners, which include Premier Foods, Sainsbury's, Bakkavar, Bright Blue Foods, Robinsons, Co-op and Heineken.

4 BECOME CAREER READY

Enhance your skills with trips across the UK and study tours to breweries, bakeries and food manufacturers, where you'll learn from world class experts in the field.



Courses

AVAILABLE

Level 1 Food Industry Skills

Level 2 T Level Transition - Food Science

T Level Food Science

Level 2 Apprenticeship Craft Butchery

Level 3 Apprenticeship Craft Butchery

Level 2 Apprenticeship Food & Drink Operator

Level 3 Apprenticeship Food & Drink Operator

Forestry & ARBORICULTURE

ARE YOU ENTHUSIASTIC ABOUT THE ENVIRONMENT? IF SO, OUR T LEVEL IN TREE & WOODLAND MANAGEMENT & MAINTENANCE IS FOR YOU.

The practice of forestry and arboriculture is crucial for the sustainable development of the countryside and urban spaces. On this course, you'll spend time climbing trees, learning about tree care, management systems of timber and much more, both on campus and within the local community.

As part of your T Level studies, you will complete an industry relevant work placement for a total of 315 hours over the two-year course with local arboriculture and forestry companies for extra experience to help you progress into employment after completing your course with us.

CAREER OPTIONS

ARBORICULTURIST, TREE OFFICER, FORESTRY WORKER, COUNTRY ESTATE WORKER, WOODLAND MANAGER, COUNTRYSIDE/ CONSERVATION CONTRACTOR.

Experienced arboricultural officers earn an average of **£40,000** a year*

*Source: National Careers Service



NAME: Harry Bradley

STUDIED: Level 3 Advanced Technical Extended Diploma in Forestry and Arboriculture (Tec Bacc)

“

During my time at Reaseheath I have enjoyed learning an incredible amount about how trees function and how they play a crucial role in the world we live in. I have also been fascinated by the practical opportunities that this industry offers and look forward to working in it. Next, I intend to travel to different parts of the world such as Australia, South Africa and America, adding to what I have learned at Reaseheath along the way.

”

4

REASONS TO STUDY

**FORESTRY &
ARBORICULTURE**

WITH US

1

**HELP
PROTECT THE
ENVIRONMENT**

Learn to protect the environment and gain skills which are crucial for the sustainable development of the countryside and urban spaces.

3

**WORK WITH
INDUSTRY
PROFESSIONALS**

Benefit from our great industry links with companies such as Stein, Forestry England or Sorbus International.

2

**LEARN THROUGH
PRACTICAL
EXPERIENCE**

Spend time climbing trees, learning about tree care, management systems of timber and much more, both on campus and within the local community.

4

**GAIN
EXTRA
QUALIFICATIONS**

Gain professional certificates alongside your qualification to help you and your CV stand out.



Courses

AVAILABLE

Level 2 T Level Transition - Tree & Woodland Management & Maintenance

T Level Tree & Woodland Management & Maintenance



**PROGRESS
ONTO A
DEGREE AT
UNIVERSITY
CENTRE
REASEHEATH**

After completing your course, you may decide to develop your skills further and continue your studies with us. Why not find out more about degrees in Environmental Conservation or Wildlife Conservation and Ecology? Visit: ucreaseheath.ac.uk

Foundation LEARNING

IF BUILDING CONFIDENCE AND GAINING ESSENTIAL LIFE SKILLS SOUNDS LIKE THE RIGHT PATH FOR YOU, WHY NOT CONSIDER A COURSE IN FOUNDATION LEARNING AT REASEHEATH COLLEGE?

In our Academy of Foundation Learning and Life Skills, you'll develop vital personal, learning, and employability skills to prepare you for adulthood and the world of work. With the support of our highly experienced staff, you'll explore subjects that interest you while working towards your goals.

Work experience placements, volunteering opportunities, and fundraising activities will help boost your confidence and build key employability skills, like timekeeping, understanding body language, and teamwork, all while continuing to improve your English and maths.

CAREER OPTIONS

After completing a foundation course at Reaseheath College, over 90% of students go on to further learning or employment. You will undertake around 70 to 250 hours of relevant work placements; this may depend on the employer you work for and your course of study. Upon completion, you will have developed skills for your CV and feel more confident in your ability.



NAME: David Smith

STUDIED: Level 1 Career Development Pathway

NEXT STEP: Open University business and computing course

“

My Level 1 course prepared me well for the move up to the Level 3 Business Diploma. I enjoy computing and I was supported to gain more skills. I was also involved in group activities and discussions which helped me grow in confidence and independence.

”

4

REASONS TO STUDY FOUNDATION LEARNING WITH US

1 RECEIVE EXCELLENT SUPPORT

Our friendly and highly qualified staff will support you throughout your studies, making sure you get the most out of your time at Reaseheath College.

3 BOOST YOUR CONFIDENCE

Increase your confidence by completing a work placement, organising community fundraising events and enjoying lots of practical activities on campus.

2 EXPLORE YOUR INTERESTS

Choose a course you are interested in, from Animal Care, Agriculture, Food or Equine, and be supported to improve your practical and theory-based skills.

4 DEVELOP YOUR PERSONAL SKILLS

Reach your full potential, develop your personal skills and get a better understanding of the career path you would like to follow, with the help of our supportive staff.



Courses

AVAILABLE

Level 1 Agriculture

Level 1 Animal Care

Level 1 Employability Skills

Level 1 Food

Level 1 Equine Skills

Entry 3 Skills for Life and Work

Level 2 Employability Skills

Horticulture & LANDSCAPE

DO YOU ENJOY KEEPING YOUR GREENERY LOOKING GREAT? TURN YOUR ENTHUSIASM INTO A CAREER BY STUDYING A HORTICULTURE & LANDSCAPE COURSE AT REASEHEATH COLLEGE.

This is a hands-on course about the 'green industry', where you will undertake relevant training and complete work experience with our specialist partners to help grow your career. You will be studying in our cutting-edge facilities, including one of the largest training and research centres for vertical farming.

Benefit from partnerships with professional organisations and suppliers including the Royal Horticultural Society and the Landscape Institute. You may also get involved with designing and building gardens and community garden projects, and even win medals for your hard work.

CAREER OPTIONS

BOTANIST, GARDEN DESIGNER, LANDSCAPE ARCHITECT, PARK SUPERVISOR, NURSERY PRODUCTION TECHNICIAN.

Experienced landscape architects earn an average of **£45,000** a year*

*Source: National Careers Service



NAME: Jamie Butterworth

STUDIED: Horticulture

JOB TITLE: RHS Ambassador and Managing Director of Form Plants

“

Horticulture is one of the most fun, exciting, rewarding, and diverse industries I can think of. For me, it's important that we inspire more young people to get into horticulture as a career – and colleges like Reaseheath provide an ideal grounding.

”

4

REASONS TO STUDY HORTICULTURE & LANDSCAPE WITH US

1 BECOME CAREER READY

Our highly experienced lecturers will help you to prepare for a rewarding and exciting career in the horticultural industry.

3 STUDY ON A BEAUTIFUL CAMPUS

Our 21-hectares of formal gardens and grounds is the perfect learning environment for horticulture students, with specialist plant collections, unusual trees, designed landscapes and sports pitches.

2 GET TO USE CUTTING-EDGE EQUIPMENT

Study in our recently built vertical farming facility, which consists of three floor to ceiling growing chambers, and has a separate research growing room which allows for micro scale testing and trials.

4 GAIN EXTRA EXPERIENCE

You will have the chance to enjoy visits to gardens with nationally significant landscaping and planting schemes, and also have the opportunity to get involved in industry-led projects on and off campus.

Courses

AVAILABLE

Level 2 Horticulture

Level 2 Apprenticeship in Horticulture

Level 3 Apprenticeship in Crop Production

T Level Horticulture & Landscaping

**PROGRESS
ONTO A
DEGREE AT
UNIVERSITY
CENTRE
REASEHEATH**

After completing your course, you may decide to develop your skills further and continue your studies with us. Why not find out more about degrees in Landscape Architecture? Visit: ucreaseheath.ac.uk

Motor Vehicle



DOES THE THOUGHT OF STUDYING VEHICLES FUEL YOU? JUMP-START YOUR CAREER WITH REASEHEATH'S INDUSTRY FOCUSED MOTOR VEHICLE COURSE.

Gain the practical skills and knowledge needed to become ready for an exciting and rewarding career in the motor vehicle industry, as you learn all about advanced diagnostic systems, fault finds and carrying out repairs.

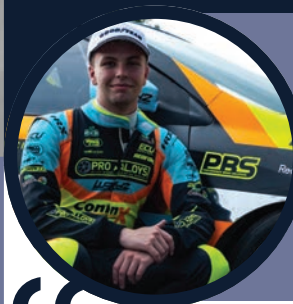
You will receive hands-on experience in our purpose-built Engineering Centre with industry standard workshops, a stunning exhibition-style showroom, an electronics lab, and the latest equipment. On top of this, we have strong links with a range of reputable companies, including Acorn Motor Group, Smiths Autoparts and SYNETIQ. As well as hands-on experience, you will also be given the opportunity to visit track days, transport museums, motor shows and more.

CAREER OPTIONS

**VEHICLE TECHNICIAN,
WORKING WITHIN MAIN
VEHICLE DEALERSHIPS,
MASTER TECHNICIAN,
MOTORSPORT ENGINEER.**

Experienced motor mechanics earn an average of **£35,000** a year*

*Source: National Careers Service



NAME: Will Redford

STUDIED: Light Vehicle Maintenance and Repair Principles

JOB TITLE: Professional Racing Driver

“

I got to know Reaseheath well in the two years I attended as a Year 10/11 pupil and I really enjoyed becoming a full-time student. The facilities are great. There's a wide range of modern vehicles, the tools and equipment are state-of-the-art and the lecturers are friendly and supportive.

”

4

REASONS TO STUDY MOTOR VEHICLE WITH US

1 INDUSTRY EXPERIENCE

Complete 100 hours of industry relevant work placements, for hands-on experience within a motor vehicle environment.

3 EXCELLENT FACILITIES

Our multi-million-pound purpose-built workshop facilities have five bays, 11 vehicle ramps, a simulated MOT standard test lane and four-way Hunter laser wheel alignment.

2 GAIN ADDITIONAL QUALIFICATIONS

Work towards gaining additional training qualifications in hybrid technology to enhance your employability and personal development.

4 AMAZING STUDY TOURS

Have the chance to take part in study tours and visit track days, transport museums, motor shows and more, to compliment what you learn at college.



Courses AVAILABLE

Level 1 Automotive Maintenance

Level 2 Vehicle Inspection

Level 3 Maintenance & Repair



Personal TRAINING

ARE YOU A FITNESS FANATIC WHO WOULD LOVE TO HELP OTHERS REACH THEIR HEALTH AND FITNESS GOALS? PUSH YOUR ENERGY INTO ONE OF OUR COURSES AT REASEHEATH COLLEGE.

Whether you aspire to become a personal trainer or work in another fitness-related profession, this course will put you on the right track. You can work towards your career in our fantastic facilities with a fitness studio, gym, and sports performance lab.

Grow your mind, muscles and career by keeping up to date with the latest fitness trends and techniques with practical sessions on and off campus. You will also gain relevant industry experience by completing placements at local fitness and leisure centres.

CAREER OPTIONS

**FITNESS INSTRUCTOR,
SPORTS MASSAGE
THERAPIST, TEACHING,
SPORTS FITNESS COACH,
LEISURE CENTRE
MANAGER.**

Experienced leisure centre managers earn an average of **£37,000** a year*

*Source: National Careers Service



NAME: Skye Tyler-Smith

STUDIED: Sport

JOB TITLE: Fitness Instructor, Personal Trainer, Gym Manager at Aptitude Health and Fitness

“

The skills I learned at Reaseheath, and particularly the support from my lecturers, helped me realise my dream of becoming a fully qualified fitness instructor and personal trainer. My time as a Reaseheath student gave me the room to grow and develop. I learned about so many aspects of the personal training industry.

”

4

REASONS TO STUDY **PERSONAL TRAINING** **WITH US**

1 PUT YOUR SKILLS TO THE TEST

Put your competitive streak to the test by taking part in the WorldSkills UK personal training competition, going head-to-head with other students from across the country to challenge your fitness level and ability.

2 DEVELOP PRACTICAL SKILLS

Gain relevant experience by working with clients from across the college, including our sports academy, public services students, and with members of the public.

3 MODERN FACILITIES

Access our excellent facilities in our modern fitness studio, which has first-class equipment including weightlifting platform, kettlebells, step boxes, modifiable barbells, and much more.

4 GAIN INDUSTRY EXPERIENCE

Develop your industry experience and practical skills with weekly, relevant work placements in local leisure and fitness centres to make you and your CV stand out.



Courses

AVAILABLE

Level 3 Physical Activity, Fitness and Exercise Science

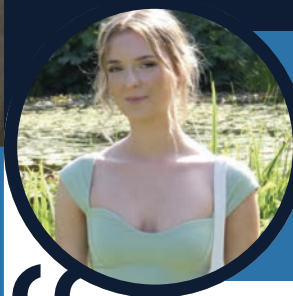


Public SERVICES

ARE YOU INTERESTED IN A DISCIPLINED CAREER SERVING THE PUBLIC AT HOME OR OVERSEAS WITH ONE OF OUR EMERGENCY OR PROTECTIVE SERVICES?

Our industry focused courses will ensure you take a step in the right direction to pursuing a career you love, while you prepare for a range of challenging and rewarding situations that will in turn hugely impact the lives of others and the community.

You will be taught by industry experts with life experience in the services as well as getting valuable input from a range of serving members of protective services such as police firearms teams, paramedics and mountain rescue. You could also have the opportunity to volunteer for service visits to support service personnel in their training.



NAME: Isabel Swarbrick

STUDIED: Uniformed Protective Services

NEXT STEP: Paramedic Science Undergraduate

CAREER OPTIONS

CRIMINOLOGIST, UK BORDER FORCE, POLICE, FIRE AND RESCUE, FORENSIC SCIENCE, PRISON SERVICE.

Experienced police officers earn an average of **£41,130** a year*

*Source: National Careers Service

“

Reaseheath helped me prepare for my future career as a paramedic in so many ways. The support that was offered to me is something I'm very grateful for, my course lecturers were so helpful, and very knowledgeable around public services and the course itself.

”

4

REASONS TO STUDY **PUBLIC SERVICES** **WITH US**

1 INDUSTRY INSIGHT

Gain invaluable advice from industry professionals such as police dog handlers, prison officers and custom personnel.

3 VOLUNTEER FOR CHARITIES

Volunteer and be actively involved in fundraising for local charities, including The Royal British Legion, SSAFA and PTSD charities, to name just a few.

2 BECOME CAREER READY

Enjoy adventurous training activities such as bushcraft, land navigation, and rock climbing, and receive tailor made fitness training in our on-site gym to prepare for entry into the uniformed services.

4 GAIN ADDITIONAL QUALIFICATIONS

Gain additional qualifications such as Duke of Edinburgh Awards, First Aid qualifications and sports awards, making you highly employable after completing your course.



Courses

AVAILABLE

Level 1 Vocational Studies – Sport & Public Services

Level 2 Public Services

Level 3 Uniformed Protective Services

Sport



**ARE YOU A SPORTS FANATIC?
MAKE IT YOUR GOAL TO SCORE
A CAREER IN THE SPORTS
INDUSTRY BY STUDYING AT
REASEHEATH COLLEGE.**

Sport is a massive part of many peoples' lives, whether that's through watching it, playing it or developing performance, it is a huge and growing sector with a vast number of opportunities. By studying with us you will gain the qualifications needed to take your next steps, while developing transferable skills and enhancing your sporting knowledge, coaching skills, analytical skills and practical ability.

Whether you want to specialise in Sport Science and take advantage of our state-of-the-art sports performance centre with over £40,000 worth of high-specification equipment, or you want to focus on Sport Coaching, where you can use our high-tech sport analysis equipment to look at techniques, tactics, and strategies, you'll study the advances in sport and technology which make this industry so fast-paced.

CAREER OPTIONS

**SPORTS NUTRITIONIST,
SPORTS COACH, SPORTS
SCIENTIST, REFEREE, PE
TEACHER, STRENGTH AND
CONDITIONING COACH.**

Experienced performance sports scientists earn an average of **£60,000** a year*

*Source: National Careers Service



NAME: Lucy Bates

STUDIED: Sports Coaching & Development

JOB TITLE: Swimming Teacher

“

Reaseheath College helped me grow in confidence and discover my passion for teaching. After achieving two Distinctions in Sports Coaching and Development, I am now working as a swimming teacher in schools and leisure centres, thanks to the skills and knowledge I gained at Reaseheath which I needed to succeed in my chosen career. My favourite thing about my course was the lecturers, they were all so supportive and kind.

”

4

REASONS TO STUDY SPORT WITH US

1 GAIN ADDITIONAL QUALIFICATIONS

Enhance your CV by studying additional qualifications such as an FA Level 1 in Coaching Football Award or other National Governing Body Awards.

3 JOIN OUR FOOTBALL ACADEMY

Have the chance to join our Football Academy, in association with NARS Football, for a unique opportunity to play regularly alongside your Level 2 or Level 3 Sport course.

2 OUTSTANDING FACILITIES

Learn using our 3G international rugby floodlit pitch, all-weather multi-use games area and four-court sports hall, as well as high-tech sports analysis equipment and software in our Sports Performance Centre.

4 LEARN FROM INDUSTRY PROFESSIONALS

Our dedicated staff are actively involved in the industry, with specialisms including sports therapy, coaching, and strength and conditioning.



Courses AVAILABLE

Level 1 Vocational Studies - Sport & Public Services

Level 2 Sport

Level 3 Sports Coaching & Development

Level 3 Sport & Exercise Science

Veterinary

NURSING

IF YOU LOVE ANIMALS AND ARE PASSIONATE ABOUT IMPROVING THEIR HEALTH AND WELFARE, STUDYING VETERINARY NURSING COULD BE THE PERFECT CHOICE FOR YOU.

Our Veterinary Nursing apprenticeships are designed to prepare you for a rewarding career in the industry. As a highly-skilled professional, you'll work alongside veterinary surgeons to deliver medical care to animals. You'll be involved in the care of a wide range of patients, and help to inform and support their owners. It's a profession that is practical, challenging, and hugely rewarding.

CAREER OPTIONS

VETERINARY NURSE, NURSING ASSISTANT, ANIMAL BEHAVIOURIST, ANIMAL REHABILITATOR, VETERINARY RECEPTIONIST, TEACHER, CLINICAL SUPERVISOR, PRACTICE MANAGER.

Experienced veterinary nurses earn an average of **£26,000** a year*

*Source: National Careers Service



NAME: Chloe Westlake-Guy

STUDIED: Veterinary Nurse Apprenticeship

JOB TITLE: Registered Veterinary Nurse

“

I thoroughly enjoyed studying at Reaseheath. The college has a brilliant Veterinary Nursing department, and my courses enabled me to learn theory alongside practical experience. The teaching team was really supportive, and it felt amazing when I passed my final OSCE exams!

”

4

REASONS TO STUDY VETERINARY NURSING WITH US

1 BRAND-NEW FACILITIES

Study in our new Veterinary Nursing Centre with a purpose built OSCE examination room, laboratory, diagnostic imaging suite, and two clinical skills suites, as well as a dedicated veterinary nursing classroom.

2 HIGHLY EXPERIENCED LECTURERS

Learn from experienced lecturers who have backgrounds in veterinary medicine and science, and who are passionate about teaching you the skills you need to become a Veterinary Nurse.

3 PRACTICAL WORK EXPERIENCE

Alongside your course, work at a Royal College of Veterinary Surgeons approved practice, where you will have a dedicated clinical supervisor, and will be visited regularly by our veterinary nursing training practice liaison assessor and skills coach.

4 WIDE VARIETY OF ANIMALS ON-SITE

Have access to our Animal Management Centre with on-site mini zoo, home to over 1,000 animals including, mammals, birds of prey, reptiles, amphibians and fish.



Courses AVAILABLE

Level 2 Veterinary Care Support

Level 2 Veterinary Receptionist

Level 3 Apprenticeship in Veterinary Nursing

Level 3 Veterinary Nurse (Companion Animal)

Level 3 Access to HE Veterinary Science

UCR



Progress onto a degree at University Centre Reaseheath

After studying a Level 3 Diploma or T Level with us, you may decide to stay on campus and progress onto degree level study at University Centre Reaseheath.

At University Centre Reaseheath, you will be encouraged to expand on the skills you learn at college, and you will be supported to grow, progress and achieve more than you ever thought possible.

Nobody champions sustainability and environmental stewardship like UCR. The exploration of new solutions to pressing global climate challenges is more critical than ever, and UCR is dedicated to giving future leaders the tools to pioneer positive transformation across the land-based industries.





There is a wide variety of courses to choose from at UCR, including full-time and part-time options, as well as Bachelor's and Foundation degrees, so you are sure to find the course that's right for you in one of the following areas:



Animal Science



Landscape Architecture



Equine Science



Food Science



Canine Behaviour and Training



Wildlife Conservation



Sustainable Agriculture



Veterinary Nursing

Progress. It's in our nature.





Whichever course you choose, at Reaseheath your journey to a successful future starts here.

Our leading-edge facilities and industry-experienced staff will help you gain real-world skills, you'll make lifelong friends and enjoy an unforgettable experience.

We'll prepare you for industry, so that you can excel in your career with confidence and resilience.

WHAT ARE YOU WAITING FOR?

Reaseheath College, Nantwich, Cheshire, CW5 6DF
01270 613242 | enquiries@reaseheath.ac.uk | reaseheath.ac.uk

