

26/27 PROSPECTUS

BE MORE AT REASEHEATH

— STEP UP, STAND OUT —



INDUSTRY FOCUSED, CAREER READY





Principal's Welcome



We are delighted you are thinking about joining one of the leading specialist land-based and technical colleges in the country. We will do everything we can to ensure your time is productive and that you secure the best possible outcome for your future.

Our industry focused courses and Career Ready Passport will prepare you for life. You'll gain vital skills for your chosen career, for study at higher education, for your health and wellbeing and in contributing to society. You'll also make friends for life and have fun! We want you to enjoy your studies and will ensure that you achieve and progress as much as possible.

We'll help you to develop essential attributes such as technical expertise, a good level of maths and English, enterprise skills, confidence, resilience, and teamwork. This powerful combination of qualifications and industry experience will help you to enter employment or progress into higher education, for example at University Centre Reaseheath. We have some of the most progressive facilities and resources in the country, ensuring that we remain at the leading edge of education and training. But Reaseheath isn't all about work! Our priority is to give you the best but safest student experience. I'm sure you will remember your Reaseheath experience as one of the best times of your life.

All information was correct at time of going to print.

5 REASONS TO CHOOSE REASEHEATH



A THRIVING STUDENT LIFE

Reaseheath offers a vibrant campus life, complete with sports teams, student societies, social nights, and charity activities. With various accommodation options to suit your budget, you'll find your perfect fit.



LEADING EDGE LEARNING SPACES

Learn with confidence in modern facilities, from leading-edge technology to purpose-built labs and workshops, thanks to £100 million investment in your future.



OUTSTANDING STUDENT SUPPORT

Whether you need help with your studies, career planning, mental health, or finances, our expert support teams are here to guide you every step of the way.



CAREER READY EDUCATION

Our courses are crafted with input from top employers, blending academic excellence with real-world relevance to ensure you're ready to step into your dream career.



BEMORE

At Reaseheath, you're encouraged to push boundaries and reach beyond your aspirations, setting the stage for a successful and rewarding career.

CONTENTS:

Principal's Welcome	2	Animal Management	34
Reaseheath Campus	4	Bakery, Confectionery & Pâtisserie	36
Accommodation & Transport	6	Business	38
Events & Shows	8	Environmental Conservation	40
Choosing the Right Course	10	Construction Trades	42
Career Ready Programme & Supportive Environment	12	Design, Surveying & Planning	44
Student Life	14	Engineering	46
Apprenticeships	16	Equine	48
T Levels	18	Floristry	50
Industry Focused, Career Ready	20	Food Technology	52
Student Success	22	Forestry & Arboriculture	54
Discover our Courses	24	Foundation Learning	56
Featured Courses	26	Horticulture & Landscape	58
		Motor Vehicle	60
		Personal Training	62
		Public Services	64
		Sport	66
		Veterinary Nursing	68
		University Centre Reaseheath	70

OUR COURSES:

Adventure Sport
Agriculture
Agricultural Engineering

Reaseheath CAMPUS

If you want to study on a vibrant, friendly and beautiful campus and learn with some of the best specialist facilities and resources in the country, Reaseheath College is the place for you.

Our campus is nestled in beautiful countryside, on the edge of the award-winning market town of Nantwich, with good rail and road connections to Manchester, Liverpool and Chester for days you want to explore further afield. We are just 15 minutes from Junction 16 of the M6 and one hour from the North Wales coastline.

STUDENT VILLAGE

The hub of your student life experience, with a wide variety of catering outlets including our new Starbucks and Nacho Bar, plus plenty of recently refurbished social learning spaces for you to study in or relax with friends.



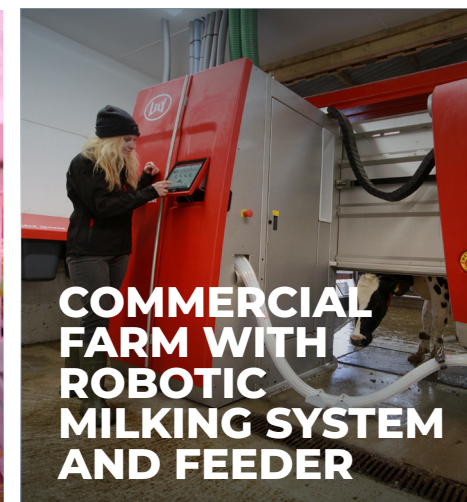
**COMMERCIAL
FOOD CENTRE**



**ADVANCED ENGINEERING
AND AGRI-TECH CENTRE**



**VERTICAL
FARM AND
GLASSHOUSES**



**COMMERCIAL
FARM WITH
ROBOTIC
MILKING SYSTEM
AND FEEDER**



**EQUINE
CENTRE**



**CONSTRUCTION
CENTRE AND
INNOVATION HUB**



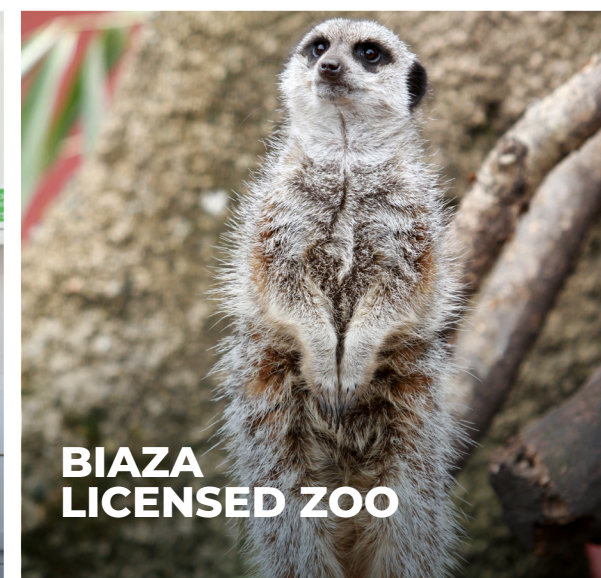
**MOTOR VEHICLE
WORKSHOPS**



**SPORTS
SCIENCE AND
PERFORMANCE
ACADEMY**



**VETERINARY
NURSING LABS**



**BIAZA
LICENSED ZOO**

Accommodation & TRANSPORT

If you decide to live on campus, you can make yourself at home in our high-quality on-site accommodation and if not, there are many transport and travel options to help you get to and from Reaseheath College every day.



DID YOU KNOW?

Residential bursary funds are available to support you with accommodation costs.



Accommodation

We have accommodation for up to 1,000 students, so there will be lots of other students in the same position as you. Together you can enjoy student life and learn to live independently away from home. Alongside our accommodation, we offer the following facilities and services on-site:

- ✓ Multiple catering outlets
- ✓ Common rooms and student areas
- ✓ College gym
- ✓ Free WiFi in halls
- ✓ Free on-site car parking
- ✓ Shuttle bus into Nantwich



Take a virtual tour at reaseheath.ac.uk/accommodation-tour or scan the QR code.



DID YOU KNOW?

Travel bursaries are available to support you with transport costs.



Transport

We offer an affordable, high-quality bus service across Cheshire and the surrounding areas covering more than 600 miles and transporting more than 1,400 students every day.

Visit reaseheath.ac.uk/transport to view our interactive bus map and up-to-date price list. We also collect students from Crewe and Nantwich bus and rail stations which are just a short distance away, or if you'd prefer to make your own way, we have a free car park and bike shelters.

BUS ROUTES INCLUDE:

R1 Congleton & Alsager	R13 Stockport, Cheadle Hulme & Wilmslow
R2 Macclesfield & Holmes Chapel	R14 Warrington
R3 Crewe & Nantwich	R15 West Kirby, Heswall, Neston, Tarvin & Tarporley
R4 Sandbach & Crewe Railway Station	R16 Runcorn, Helsby & Frodsham
R5 Wrexham & Malpas	R17 Ellesmere Port
R6 Shrewsbury & Wem	R18 Liscard, Upton, Port Sunlight & Eastham
R7 Telford, Newport & Market Drayton	R19 Mold & Chester
R8 Knutsford & Northwich	R20 Blythe Bridge, Meir, Longton & Trentham
R9 Biddulph & Newcastle-Under-Lyme	R21 Middlewich & Winsford
R10 Uttoxeter & Werrington	R22 Stafford, Stone & Woore
R11 Leek & Kidsgrove	R23 Oswestry, Ellesmere & Whitchurch
R12 Hanley & Audley	

R = Route

Find out more at www.reaseheath.ac.uk/transport or scan the QR code.



EVENTS

Course Open Events

Curious about life at Reaseheath College and University Centre Reaseheath?

Why not come and experience it for yourself at one of our Course Open Events?

Visit our stunning countryside campus, where you'll discover our range of courses in more depth, meet with supportive staff, and can ask any questions you might have. It's the perfect opportunity to explore your options and see what makes Reaseheath so unique.

Our next Course Open Events are:

 Saturday 27th September 2025

 Saturday 18th October 2025

 Saturday 29th November 2025

 Saturday 31st January 2026

 Tuesday 24th February 2026

 Saturday 21st March 2026

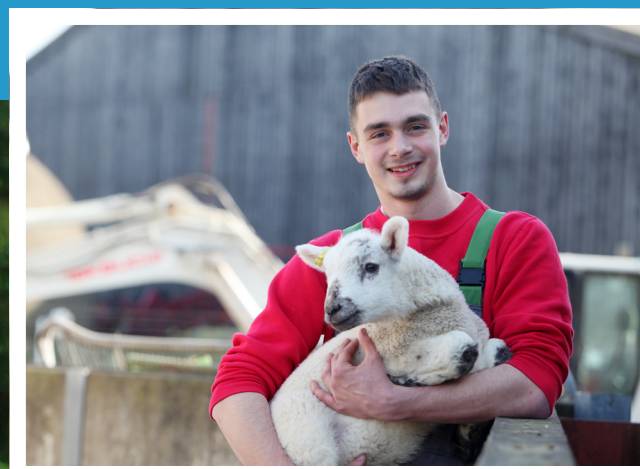
 Saturday 25th April 2026

 Saturday 13th June 2026



SHOWS

Upcoming Shows & Events



Each year, we host and support a variety of popular community and industry events which are a great way to strengthen our local and regional connections and showcase what we have to offer beyond the classroom here at Reaseheath.

Our Lambing and Mini Zoo Weekends on 28th February and 1st, 7th and 8th March 2026 are a great way to see lambing season up close, and to find out more about our hands-on approach to agricultural education. Our annual Family Festival, on May 17th, sees the whole campus spring into life as we open up our gates to the public – from a vibrant marketplace and campus tours, to demonstrations and hands-on workshops where you can try bricklaying, tree climbing, stock judging, flower arranging – there's something for everyone at this annual event.

We also take part in community shows across the region and this year you'll find us at the Staffordshire Show, plus The Royal Cheshire County Show. We're also proud to be hosting the Nantwich Show again where we'll welcome hundreds of traders and thousands of visitors to our campus.

Find out more at www.reaseheath.ac.uk/ experience or scan the QR code.



Choosing the RIGHT COURSE



Our courses are more practical than you may find in sixth forms and some other colleges.

We offer a number of routes within each level to suit individual needs. The chart below is aimed towards 16+ school leavers; however equivalent qualifications also apply. Please note entry requirements can vary depending on the course you choose. For full course information, including the specific GCSE subjects you require for your course, visit our website.

	ENTRY LEVEL	LEVEL 1	LEVEL 2
Course title	Entry Level Qualification	Level 1 Technical Qualification	Level 2 Technical Qualification including apprenticeships and T Level transition year
Typical entry requirements	GCSEs below grade 3	Flexible entry requirements which may mean some GCSEs at grades 1-3	Typically 4 GCSEs at grade 3, including a 2/3 combination in maths and english
Duration	1 year	1 year	1 year
Next steps	After Entry Level learning you could go straight to a Level 1 Diploma (Foundation Learning) at Reaseheath	Completing this course means you may be able to progress onto a Level 2 Diploma or an apprenticeship	If you successfully complete this course you may move onto a Level 3 course or an apprenticeship



*Typically for Food Science and Animal Science T Levels, the applicant must have Science GCSE at grade 4.

LEVEL 3	T LEVEL	TECH BACC
Level 3 Technical Qualification e.g. apprenticeship, diploma	T Level	Level 3 Technical Baccaulaureate
Typically 4 GCSEs at grade 4 (including maths and english), or a Level 2 qualification in a relevant subject*	Typically 5 GCSEs at grade 4 (including maths and english), or a Level 2 qualification in a relevant subject*	Typically 5 GCSEs at grade 4 or above (including maths and english), or a Level 2 qualification in a relevant subject
1, 2 or 3 year sandwich course	2 years	2 years
Equivalent to 1-3 A Levels, these courses will enable you to move onto a higher education course such as a degree, foundation degree or higher level apprenticeship	Equivalent to 3 A Levels, these courses will enable you to move onto a higher education course such as a degree, foundation degree or higher level apprenticeship	Equivalent of up to 4.5 A Levels or 216 UCAS points, these courses will enable you to move onto a higher education course, degree, foundation or a higher level apprenticeship



The Career Ready Passport at Reaseheath College is designed to equip all students with the essential skills and knowledge needed for success beyond their studies.

Delivered alongside your academic course, this programme includes weekly sessions, workshops, and guest speakers covering a wide range of important topics. From financial budgeting, employment, and independent living to mental health awareness and online safety, you'll gain valuable insights to prepare you for the future.

The career ready programme will help you discover the opportunities available for your next steps. You'll also be developing career ready skills and behaviour essential for employment or further study. Regular 1:1 reviews are part of the programme, helping you stay on track and achieve your goals.



Supportive ENVIRONMENT

At Reaseheath, we care about your wellbeing and pride ourselves on providing a safe and stimulating environment for you to learn. You will have a course tutor who will guide you through your course and encourage you to achieve to the best of your ability. You will also have a progress coach who will be on hand throughout your time at college to listen to any difficulties you are encountering and aid you with solving them, in order to make progress on your course.

We understand that sometimes it can be easier talking to someone outside of your curriculum area, so we also offer a range of additional support to students through:



To view our information guide for parents, visit reaseheath.ac.uk/parents



Student Services



Learning Skills Centre (LSC)



The Library



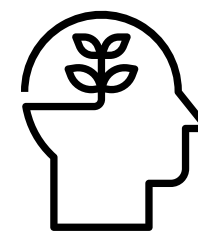
Student Wellbeing Service



College Counselling Service



Reaseheath Careers and Progress Hub



Wellbeing

Our Wellbeing Service is available for anyone who may be experiencing difficulties at college.

Whatever the problem may be, whether you need support with homesickness, relationships, bullying, difficulties with coursework, anxiety, financial difficulties, bereavement, family problems or anything else, our team of expert wellbeing advisors are here to help, or refer you to the relevant services if required.

Our Wellbeing Team offer a range of services including 1:1 support in a relaxed and non-judgmental environment and access to our BeWell site, which

is our online Mental Health and Wellbeing resource available to students 24/7. We also have our own internal counselling team, which offers person-centred counselling, and can be accessed on site, on Teams, or over the phone.

Scan the QR code to find out more.



Student LIFE

The Reaseheath experience begins the moment you start your course or move into our halls, with a team of returning students welcoming you and guiding you through four weeks of fun events like bushtucker trials, slip and slides, and a freshers' ball. Our student social area, located at the heart of campus, offers pool tables, games, table tennis, and large-screen TVs, providing a great space to relax and connect with friends.

There's so much to do in your spare time at Reaseheath, from clubs, societies, and social events to sporting activities like netball and football, where you can even compete in leagues.

The Reaseheath Students' Union, in collaboration with the Student Life Team, organises a packed calendar of events, ensuring there's something for everyone.

Whether you're into sports or prefer other clubs and societies, you'll find plenty of opportunities to make new friends and enjoy campus life.

Student social spaces

New for the 2025/2026 academic year, we have given our students' social spaces a makeover!

Our student bar next to our main restaurant has had a revitalising refresh ready for you to enjoy a range of day and nighttime activities, and lots more seating and space for you to socialise with your friends.

We also have our large Lord Woolley Centre, which is now packed with even more booths and comfy seating for you to relax or study in.

And that's not all, as we have further improved and invested into our wide range of catering outlets where you can buy main meals, snacks and drinks, including:

- Main Restaurant
- New Starbucks servery
- Boot Zone
- Brand-new Nacho Bar



Ways that students live life to the max is through:



Freshers' Fair



RAG Fundraising



Student societies



Summer Ball



Winter Ball



Presentation of Awards Ceremony



Sports Clubs

Reaseheath Students' Union Societies:

- Animal Enrichment, Training and Volunteering Society
- Avian Society
- Aquatics Society
- Canine Society
- Communications Society
- Conservation Society
- Craft Society
- Entertainments Society
- Equine Society
- Fantasy Society
- Herpetological & Entomological Society
- LGBTQ+ Society
- Raising and Giving Society
- Sunflower Society



YOU CAN ALWAYS SET UP YOUR OWN SOCIETY TOO!

Apprenticeships



APPRENTICESHIPS AT REASEHEATH COLLEGE PROVIDE THE IDEAL COMBINATION OF EARNING AND LEARNING. GAIN A NATIONALLY RECOGNISED INDUSTRY QUALIFICATION, DEVELOP ESSENTIAL WORKPLACE SKILLS, AND EARN A WAGE – ALL WHILE TRAINING IN THE SKILLS THAT EMPLOYERS DEMAND.

With apprenticeships, you can shape your future. Whether you choose to continue with your employer or move on to higher

education, the path is yours. Most of your time is spent on the job, with dedicated days at Reaseheath for hands-on training.

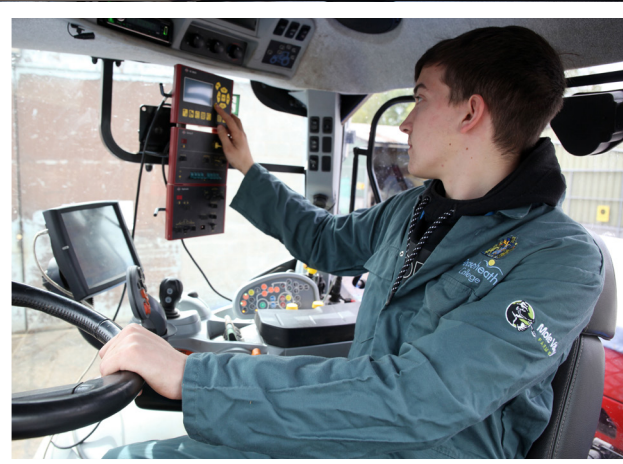
You will get:	Level:	Entry requirements:	Length:
Intermediate Apprenticeship (equivalent to five good GCSE passes)	2	You might not need any qualifications to start, but you will need to be over 16 years old and be able to complete the programme.	12-18 months
Advanced Apprenticeship (equivalent to two A Level passes)	3	To start this programme, you usually need five good GCSEs grade 9-4 or to have completed an Intermediate Apprenticeship. If you have A Levels you might still need to start at this level to get experience of the job.	18-48 months
Higher or Degree Apprenticeships (equivalent to a Foundation Degree)	4-7	To start this programme, you usually will have completed an Advanced Apprenticeship or have done a Level 3 course such as BTEC or A Levels.	24+ months



If you're 16 or older and working 30+ hours a week, you can begin your apprenticeship with us. You'll receive guidance from a dedicated Skills Coach and access to college transport or accommodation, depending on your schedule. Reaseheath apprenticeships are your gateway to a successful career.

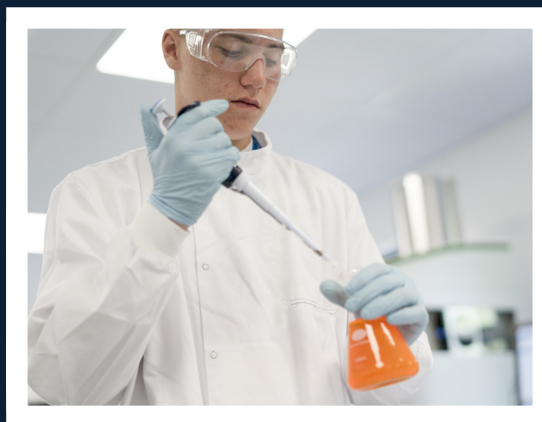
We offer a wide variety of apprenticeships, including:

- Animal Management
- Agriculture
- Bus & Coach
- Butchery
- Construction Plant
- Horticulture
- Land Based Engineering
- Rail
- Food Technology
- Construction
- Equine



What are T LEVELS?

T Levels are cutting-edge, two-year courses designed for students to take after completing their GCSEs. Equivalent to three A Levels, T Levels have been developed in collaboration with employers and educators to meet the current demands of industry, ensuring that students are fully prepared for skilled employment, apprenticeships, or further technical studies.



INCENTIVE SCHEME

We are offering a fantastic incentive scheme available for Food Science and Horticulture and Landscaping T Level students.



Scan the QR code to find out more.

We offer T Levels in:

- Management and Administration
- Design, Surveying and Planning
- Food Science
- Land-based Engineering
- Tree and Woodland Management
- Agriculture
- Animal Management
- Marketing
- Horticulture and Landscaping

At Reaseheath College, T Levels combine practical and knowledge-based learning with real-world experience through an industry placement of at least 315 hours [around 45 days]. You'll spend 80% of your time in the classroom and 20% gaining hands-on experience with an employer, developing the skills and knowledge that industries are actively seeking.

Benefits of completing a T LEVEL at Reaseheath:

EQUIVALENT TO **3 A LEVELS**

45 day industry placement



Strong support from businesses

80%

CLASSROOM
LEARNING

20%

WORK
EXPERIENCE

T Level UCAS Tariff Points:

Distinction* (168 points)

Distinction (144 points)

Merit (120 points)

Pass (96 points with C or above, 72 points with D or E)



Industry Focused, Career Ready

At Reaseheath College, we are committed to equipping students with the practical skills, industry connections, and real-world experience they need to thrive in their chosen fields. Through internships, work placements, and hands-on projects with leading businesses,

our students are building the confidence and expertise to transition seamlessly into successful careers.

Here's a glimpse of some of the ways we're developing Industry Focused, Career Ready students.



Equine Careers in Action

During Equine Industry Week, Reaseheath students gained valuable industry insights through site visits to Kelsall Hill, Oliver Hall Racing, and Charles Owen. Hands-on workshops with the British Horse Society, fitness experts, and international riders helped students build skills, make connections, and explore real-world career opportunities in equine industries.



Floral Design in Bloom at Arley

Floristry students transformed Arley Hall's historic gallery for its Christmas floral festival, blending tradition with creativity. Now in its 11th year, the project offers real-world experience in professional event styling. Students developed technical skills, confidence and creativity while showcasing their work in one of Cheshire's most iconic festive settings.

Top Honours for Apprentice Star

Reaseheath's 2025 Apprenticeship Awards celebrated success across ten categories. Daniel McDill of First Bus won Transport Engineering Apprentice of the Year and the prestigious Principal's Award, recognising his outstanding technical skill, leadership and commitment. His achievements reflect the excellence and ambition seen across all ten award-winning apprentices and employers.



Skills Shine in Competition

Reaseheath students celebrated success at the Cheshire and Warrington Skills Competition, winning junior bricklaying and senior joinery and placing runner-up in the Business challenge. Hosted on campus, the event gave students the chance to showcase their skills in real-world scenarios—building confidence, employability and sector-specific experience.



Public Service Careers Experience

Uniformed Public Services attended a Uniformed Public Services Conference, where students engaged with alumni working in careers such as policing, paramedics, and firefighting. The event featured an interactive tabletop exercise, providing essential knowledge on transitioning from college to successful careers in public services.



Bake Box Success

Reaseheath's Bake Box, run by Bakery students, offers freshly made treats while providing real-world business experience. Students gain skills in product organisation, customer service, and sales, with prices starting at 50p. Open four days a week, Bake Box has become a popular spot, showcasing students' hard work and creativity.



Excellence in Animal Care

Reaseheath's first Animal Care and Welfare Assistant apprentices, partnered with VetSkill, achieved a 100% success rate in their End Point Assessments. Graduates, now progressing to Level 3 Veterinary Nursing, gained hands-on experience at leading institutions. Reaseheath's commitment to practical training ensures apprentices are ready for veterinary careers.

STUDENT SUCCESS

On Results Day 2025, our Level 3 vocational, technical, and T Level students smashed it, with an 8% rise in high grades and an overall pass rate of 96%!

BeMore

BeMore encourages our students and staff to push beyond their limits in academia, competitions, career opportunities, and personal growth through making the most of the opportunities on offer at the college.

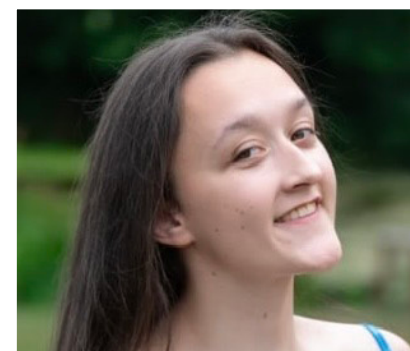
We celebrate these achievements through initiatives like Student of the Term presentations and our annual Presentation of Awards ceremony. We are proud to share our stories highlighting successes in various areas from career journeys to community work and competition wins. Examples of activities relating to BeMore are attending the FE Student Conference, working towards a skills competition, attending a cross college trip such as UCAS Discovery Fair, or being a student ambassador, being a member of a student society or committee.



Thapthai Howarth
Level 3 National Extended
Diploma in Uniformed Public
Services

“

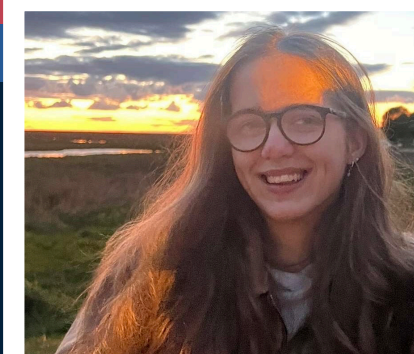
It didn't feel like just a class. It felt like my classmates and tutors all knew each other well and respected each other. The whole college experience is my favourite memory.”



Marcey-Ann Lakin
Level 3 Sports Coaching
and Development

“

I'm most proud of managing to compete for Team GB at the same time as completing all my college assignments. I chose Reaseheath because of the amazing sports programme and the support they gave me as a full-time athlete and student.”



Robyn McCabe
Tech Bacc Equine Management

“

The best thing about my course was building relationships with the horses, staff and other students. I've made some great friends from college.”



Molly McGuinness-Cronin
T Level in Design, Surveying
and Planning

“

The best thing about my course has been going to my industry placement and learning what it's like to be a project manager.”

“

The best thing about my course has been the practical lessons — especially getting to climb and use chainsaws.”



Ed Mulroy
T Level in Tree and Woodland
Management



Discover OUR COURSES



We offer courses in twenty different subject areas at Reaseheath College, so whatever your interests are, we are sure to have a course for you!



DO YOU DREAM OF WORKING WITH ANIMALS AND WANT TO STUDY THEIR BEHAVIOUR AND WELFARE?

You will more than likely enjoy one of our animal management, equine or veterinary nursing courses, studying in our BIAZA-licensed mini zoo, brand-new veterinary nursing facilities or BHS accredited Training and Research Centre.

- ✓ Animal Management
- ✓ Equine
- ✓ Veterinary Nursing



DO YOU ENJOY BEING OUTDOORS AND WANT A CAREER WITHIN THE AGRICULTURAL OR LAND MANAGEMENT INDUSTRIES?

Whether you want to work with flowers or crops, landscapes or trees, if you are passionate about sustainability, biodiversity and protecting the planet, one of our land-based courses below might be perfect for you.

- ✓ Agriculture
- ✓ Conservation
- ✓ Floristry
- ✓ Forestry
- ✓ Horticulture



ARE YOU A FITNESS FANATIC, DO YOU LOVE AN ADVENTURE, OR WANT TO HELP OTHERS ACHIEVE THEIR HEALTH GOALS?

Turn your passion for sport into a career by studying one of the following courses.

- ✓ Adventure Sport
- ✓ Personal Training
- ✓ Public Services
- ✓ Sport



ARE YOU INTERESTED IN THE SCIENCE BEHIND FOOD, OR ARE YOU A STAR BAKER?

Study in our BRC-accredited food centre at Reaseheath College and learn all the skills you need to succeed in the fast-paced food and bakery industries.

- ✓ Bakery, Pâtisserie and Confectionery
- ✓ Food Science



ARE YOU INTERESTED IN MACHINERY? WOULD YOU LIKE TO LEARN HOW IT WORKS AND HOW TO REPAIR IT?

Whether you are interested in working with cars, tractors or heavy machinery, our engineering courses and apprenticeships could be the right choice for you.

- ✓ Agricultural Engineering
- ✓ Engineering Apprenticeships
- ✓ Motor Vehicle



ARE YOU READY TO BUILD YOURSELF A GREAT CAREER IN THE CONSTRUCTION INDUSTRY?

Whether you prefer the hands-on trades such as bricklaying, joinery or plastering, or you want to explore the technologies behind the design, surveying and planning for a career in architecture, we offer both routes here at Reaseheath College.

- ✓ Construction Trades
- ✓ Construction – Design, Surveying and Planning



WE OFFER TWO DIFFERENT BUSINESS COURSE ROUTES HERE AT REASEHEATH, SO WHETHER YOU DREAM OF A SUCCESSFUL CAREER IN THE MARKETING INDUSTRY OR WANT TO LEARN HOW TO THRIVE IN THE MANAGEMENT AND ADMINISTRATION INDUSTRIES, WE HAVE A COURSE FOR YOU.

- ✓ Marketing
- ✓ Management and Administration



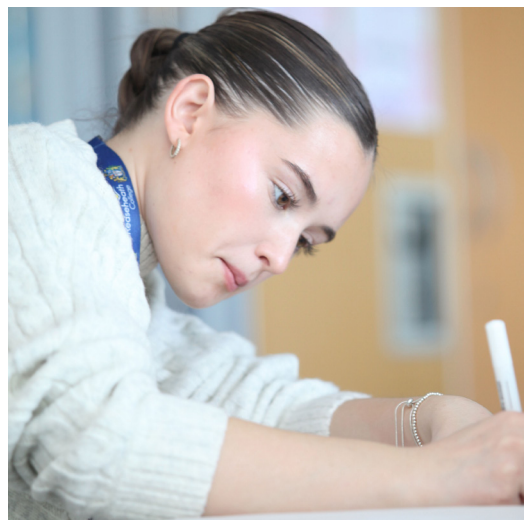
OUR FOUNDATION DEPARTMENT AT REASEHEATH COLLEGE OFFERS A VARIETY OF PRACTICAL, ENTRY LEVEL COURSES, DELIVERED IN A HIGHLY SUPPORTIVE ENVIRONMENT.

Whether you love animals, being outside, or you want to learn skills for the workplace, we will help you to boost your knowledge, confidence and life skills.

- ✓ Skills for Working Life
- ✓ Introduction to Land-Based Studies
- ✓ Employability

Featured COURSES

We are excited to have recently added a couple of new T Levels to our suite of technical qualifications here at Reaseheath College, including our T Level in Marketing and T Level in Ornamental Horticulture and Landscaping.



T Level in Marketing - page 38

- Perfect your skills in our outstanding content studio on campus, new for 2026
- Gain real-life experience with our in-house marketing department, with a range of exciting opportunities, large scale events and projects to get involved in
- Have access to our Business Hub, used by several employers who you can engage with during your studies at Reaseheath College
- Enter a dynamic industry with a wide variety of career routes, from digital marketing or public relations to marketing researcher or social media content creator

T Level in Ornamental Horticulture and Landscaping - page 58

- Gain great job satisfaction by making a positive environmental impact
- Be part of a growing industry with plenty of opportunities
- Reap the benefits of working out in nature and being creative in roles such as landscape architect or green infrastructure specialist
- Study in our National Centre for Horticulture, the Environment and Sustainable Technology, with Priva automated glasshouses plus a vertical farming research centre with growing chambers and a micro-scale testing lab



T Level Incentive Scheme

Available for T Level in Food Science & T Level in Ornamental Horticulture and Landscaping students

We've launched a T Level incentive scheme, which offers financial perks to those studying a T Level in Food Science or Horticulture and Landscaping at Reaseheath College.

These incentives, which include up to £450 per year, a laptop loan scheme, free course equipment and access to an industry mentor, are designed to reward commitment, enhance learning experiences, and provide you with the resources you need to excel in your studies and future careers.

Scan the QR code to find out more.



T Level in Food Science – page 52

- Gain the skills you need to help to play a key role in achieving food security across the globe.
- Prepare for a rewarding role in the agri-food sector and learn vital skills around food production, processing and distribution.
- Complete an employer set project, such as developing an exciting new food product and have the chance to present your ideas!
- Learn in our industry standard food science facilities which include our commercial dairy processing halls, research and development equipment, and food innovation rooms.

Scan the QR code to read Food Science lecturer Funmi's blog



Level 3 Diploma in Sport and Exercise Science – page 66

- Use the very best sport and fitness equipment, including cardio and resistance machines, functional training zones, and free weights.
- Perfect your skills in our performance lab with an altitude chamber, gas analysis machines, and timing gates for precision performance testing. You'll also have access to GPS units and VEO analysis for real-time player performance tracking.
- Our dedicated staff are actively involved in the industry, with specialisms including sports therapy, coaching, and strength and conditioning.



Adventure SPORT

ARE YOU A THRILL SEEKER?
DO YOU ENJOY BEING
OUTDOORS? PURSUE A
CAREER IN SOMETHING
THAT YOU LOVE WITH OUR
ADVENTURE SPORTS COURSE.

Take on new challenges as you get ready for your thrilling career in the fast-paced outdoor activity industry. You will develop your practical skills and experience new heights with exhilarating activities such as mountaineering, climbing, canoeing and kayaking.

Our campus is situated close to some fantastic adventure destinations, including The Roaches, North Wales and The Peak District. You may also have the opportunity to go further afield on one of our exciting study tours.



NAME: Emma Pemberton
STUDIED: Sport and Outdoor Activities
JOB TITLE: Trainee Bridge Inspector, Up and Under

“

I've really enjoyed the course – it's boosted my confidence and helped me develop key communication and strategy skills. It's also opened my eyes to the wide range of career opportunities available with an adventure sports qualification. I had no idea there were so many different paths I could take!

”

CAREER OPTIONS

- ✓ Expedition leader
- ✓ Machinery operator
- ✓ Adventure sports coach
- ✓ Outdoor instructor in Britain or abroad
- ✓ Professional adventure sport athlete

Experienced outdoor activities instructors earn an average of **£30,000** a year*

*Source: National Careers Service

4

REASONS TO STUDY
**ADVENTURE
SPORT
WITH US**

1 PRACTICAL EXPERIENCE

Gain experience in an excitingly wide range of outdoor activities including climbing, mountaineering, canoeing, and kayaking.

3 EXCELLENT FACILITIES

Learn using our high-quality facilities such as our on-site climbing wall, a high and low ropes course, bushcraft area and altitude chamber.

2 GAIN ADDITIONAL QUALIFICATIONS

Have the chance to achieve National Governing Body Awards from well-recognised organisations such as The British Canoe Union, British Cycling, and Mountain Training.

4 AMAZING STUDY TOURS

See more of the world with our incredible study tours, which in the past have included skiing and snowboarding in the Alps, crewing a yacht to France, and winter mountaineering in the Scottish Highlands.



Courses

AVAILABLE

Level 1 Vocational Studies – Sport & Public Services

Level 2 Adventure Sport

Level 3 Sport & Outdoor Activities

Agriculture

WOULD YOU LIKE TO LEARN HOW TO SHAPE THE FUTURE OF FARMING AND FOOD PRODUCTION, AT A COLLEGE WHICH HAS BEEN TEACHING AGRICULTURE COURSES FOR OVER 100 YEARS?

By studying an agriculture qualification at Reaseheath College, you will have access to state-of-the-art resources on our 252-hectare commercial and training farm, including our new automated robotic milking and feeding systems and data centre, and gain practical experience with our dairy cows, youngstock, sheep flock, and tractor operations.

You will learn about technological advancements in precision farming, data analysis, and sustainable livestock production, and enjoy unique insights and experiences off campus by visiting farms and businesses. You will also complete a work placement, and gain additional qualifications, such as safe use of veterinary medicine and pesticide application, to make you and your CV stand out.



NAME: Alice Cork

STUDIED: Level 3 Extended Diploma In Agriculture; Foundation Degree in Agriculture at University Centre Reaseheath

NEXT STEP: Technical Sales Nutritionist, HJ Lea Oakes

“

I always wanted to go into farming, so choosing Reaseheath as a college was a natural decision.

The mix of theory and hands-on experience is what makes it stand out. You're not just learning from textbooks — you're applying it in real-world settings, which prepares you far better for the workplace.

”

CAREER OPTIONS

- ✓ Senior farm manager
- ✓ Dairy herd manager
- ✓ Genetics specialist
- ✓ Machinery operator
- ✓ Livestock nutritionist
- ✓ Animal health or feed specialist

Experienced agronomists earn an average of **£60,000** a year*

*Source: National Careers Service

4

REASONS TO STUDY
**AGRICULTURE
WITH US**

1 GAIN EXTRA QUALIFICATIONS

Study for extra qualifications in areas such as foot trimming, safe use of veterinary medicine, and pesticide application, to make you and your CV stand out.

2 LEARN USING THE BEST EQUIPMENT

As part of the Cheshire and Warrington Institute of Technology, we use funding to develop our commercial farm and Agri-Technology Centre to integrate further state-of-the-art technologies, machinery and equipment.

3 PREPARE FOR WORK IN THE INDUSTRY

Gain plenty of practical experience working with our dairy cows and pedigree Ayrshire cattle, support lambing our sheep flock, and work hands-on with tractor operations to gain well-rounded skills needed for the industry.

4 PRACTICAL WORK EXPERIENCE

Complete work experience during your course for a valuable insight into the agricultural industry and to enhance your CV, to further increase your employment prospects.



Courses AVAILABLE

Level 2 Technical Certificate in Agriculture

Level 2 Apprenticeship in General Farm Work

Level 3 Apprenticeship Livestock Unit Technician

T Level Agriculture - Livestock Production



**PROGRESS
ONTO A
DEGREE AT
UNIVERSITY
CENTRE
REASEHEATH**

After completing your course, you may decide to develop your skills further and continue your studies with us. Why not find out more about our degree in Sustainable Agriculture where you could specialise in either Livestock Management, Crop Management or Dairy Herd Management? Visit: ucreaseheath.ac.uk

Agricultural ENGINEERING

LEARN ALL ABOUT THE ADVANCED TECHNOLOGY NEEDED TO MAINTAIN COMPLEX TRACTORS AND AGRICULTURAL MACHINERY, ALONGSIDE A 315-HOUR INDUSTRY PLACEMENT, OVER THIS TWO-YEAR LAND-BASED ENGINEERING T LEVEL.

When at college, you'll be based in our amazing Agri-Tech facility, developed in partnership with major agricultural companies, such as New Holland, CLAAS UK, Case IH and JCB. You will develop your technical knowledge and practical ability in the maintenance of agricultural machinery using the latest diagnostic equipment.

You may also be given the opportunity to visit fantastic shows and exhibitions such as LAMMA and gain first-hand experience to help boost your knowledge within the industry.



NAME: Endaf Owen
STUDIED: Technical Baccalaureate, Land-based Engineering
NEXT STEP: Engineering Undergraduate

“

I came to college with a love for tractors but very little knowledge of engineering, thankfully the tutors explained everything thoroughly and were very helpful if we had any questions. The practical and theory elements of the course were very enjoyable, although I personally enjoyed more of the theory lessons. I left Reaseheath with a newfound passion for engineering and will continue to pursue this passion at university level.

”

CAREER OPTIONS

- ✓ Test engineer
- ✓ Precision farming engineer
- ✓ Technical service engineer
- ✓ Technical parts specialist
- ✓ Design and development engineer

Experienced agricultural engineers earn an average of **£45,000** a year*

*Source: National Careers Service

4

REASONS TO STUDY AGRICULTURAL ENGINEERING WITH US

1 DEVELOP YOUR PRACTICAL SKILLS

Develop your technical knowledge and practical ability in the maintenance of agricultural machinery using the latest diagnostic equipment.

2 ENJOY STUDY TOURS

Have the chance to visit fantastic shows and exhibitions such as LAMMA for first-hand experience needed to boost your knowledge within the industry.

3 OUTSTANDING FACILITIES

Learn your skills in our outstanding Agri-Tech training facility, with electronic diagnostic equipment, hydraulic training rigs, electronics lab and industry standard workshops.

4 BENEFIT FROM OUR INDUSTRY LINKS

We have links with local, national and international companies including JCB, Case IH, CLAAS UK and New Holland, and they look to us when recruiting newly qualified engineers.



Courses AVAILABLE

Level 2 Land-based Engineering

T Level Land-based Engineering

Animal MANAGEMENT

CRAZY ABOUT ANIMALS? TAKE A WALK ON THE WILD SIDE AT OUR ANIMAL CENTRE AND ZOO!

You'll be based at one of the most fantastic, purpose-built animal centres in the UK with a BIAZA-licensed teaching zoo and laboratories.

You'll have the chance to work with around 200 species including meerkats, lemurs, otters, bush dogs, capybara, fish, amphibians, pygmy marmosets, along with companion and park animals, plus an opportunity to visit some of the UK's leading zoos and wildlife parks. Whatever your interests, you'll be encouraged to gain as many experiences as possible and to explore the range of exciting and varied careers on offer.



NAME: Peter Watson

STUDIED: Animal Management

JOB TITLE: Animal Technical Support Officer, Chester Zoo



It was amazing to be surrounded by like-minded people. Growing up, loving animals as much as I did wasn't always seen as cool – but here, everyone shared that same passion. Being part of a supportive group of peers and tutors who all cared about the same things was fantastic. If you're thinking of studying in this area, go for it – it gave me the qualifications and confidence I needed to move forward in my career.



CAREER OPTIONS

- ✓ **Animal conservationist**
- ✓ **Animal behaviourist**
- ✓ **Animal nutritionist**
- ✓ **Animal physiotherapist**
- ✓ **Zoologist**

Experienced zoologists earn an average of **£48,000** a year*

*Source: National Careers Service

4

REASONS TO STUDY **ANIMAL MANAGEMENT** **WITH US**

1 LEARN IN OUR ON-SITE ZOO

On-site we have an animal centre and BIAZA-licensed mini zoo, which includes our brand-new aviary block and a pygmy marmoset enclosure.

2 INDUSTRY FOCUSED COURSES

Our courses are industry focused, so you'll have lots of opportunities for research and work experience to make your CV stand out from the crowd.

3 WE'LL GET YOU CAREER READY

Become career ready by gaining useful tips and information from inspirational speakers and former students, supported by tutors and keepers with industry experience.

4 REAL LIFE EXPERIENCE

Specialise in animal behaviour or science, based on your career ambitions, with our T Level courses where you'll gain hands-on experience with our collection of over 1,000 mammals, amphibians, reptiles, birds, and fish in our on-site mini zoo.



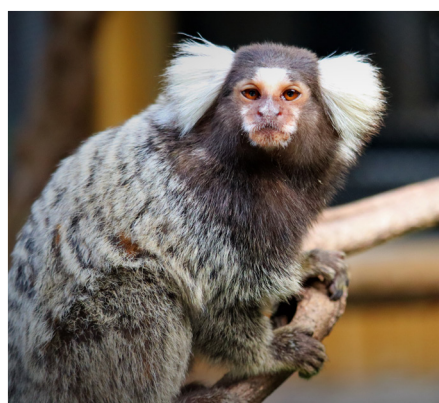
Courses **AVAILABLE**

Level 2 T Level Transition in Animal Management

Level 2 Apprenticeship in Animal Care & Welfare

T Level Animal Management & Behaviour

T Level Animal Management & Science



**PROGRESS
ONTO A
DEGREE AT
UNIVERSITY
CENTRE
REASEHEATH**

After completing your course, you may decide to develop your skills further and continue your studies with us. Why not find out more about degrees in Animal Behaviour and Welfare, Wildlife Conservation and Ecology, Canine Behaviour, Zoo Management and Applied Zoology? Visit: ucreaseheath.ac.uk

Bakery,

CONFECTIONERY & PÂTISSERIE

IF PÂTISSERIE IS YOUR PASSION, OR YOU JUST LOVE TO BAKE, THEN WHY NOT TURN YOUR HOBBY INTO A CAREER BY STUDYING A BAKERY COURSE AT REASEHEATH COLLEGE?

During your studies, you will spend time in our bespoke bakery, being taught by highly professional staff from varying baking backgrounds. No two days will be the same on this course; one day you may be perfecting your chocolate-making skills, the next you may be kneading dough.

Whilst you will be learning the set skills and knowledge of the kitchen, you will also be given plenty of room to get creative and explore new product development. In addition to spending time in our food centre, you will also get to enjoy trips to UK-based companies.

CAREER OPTIONS

- ✓ Baking engineer
- ✓ Artisan baker
- ✓ Pâtisserie chef
- ✓ Bakery operative
- ✓ Cake decorator

Experienced bakers earn an average of **£26,000** a year*

*Source: National Careers Service



NAME: Charlotte Lawler
STUDIED: Professional Bakery
JOB TITLE: Cake Business Owner

“

A lot of my success is because our lecturers taught us commercial skills as well as supporting us through the actual baking, modelling and cake decorating. Their experience was a great help, and I've used every skill I was taught.

”

4

REASONS TO STUDY
**BAKERY,
 CONFECTIONERY
 & PÂTISSERIE**
WITH US

1 COMPLETE A WORK PLACEMENT

Complete a relevant work placement with a bakery of your choice for extra skills and experience to make you and your CV stand out from the crowd.

2 ENJOY STUDY TOURS

Enhance your learning with study tours to UK companies for behind-the-scenes visits to large artisan bakeries and attend lectures from internationally recognised cake designers.

3 BRC ACCREDITED FOOD CENTRE

Our British Retail Consortium Grade AA+ commercial bakery has everything you would expect within large scale manufacturing, so it's the perfect place to develop your skills.

4 GAIN ADDITIONAL CERTIFICATES

Enhance your CV by completing additional certificates in Food Safety, Health and Safety, Risk Assessment and HACCP.



Courses

AVAILABLE

Level 1 Food Industry Skills

Level 2 Professional Bakery

Level 3 Professional Bakery

Level 2 Apprenticeship in Bakery

reaseheath.ac.uk/bakery-patisserie-and-confectionery



Business

ARE YOU A BUDDING ENTREPRENEUR OR DO YOU HAVE A PASSION FOR MARKETING? IF SO, EITHER OUR T LEVEL IN MANAGEMENT AND ADMINISTRATION OR T LEVEL IN MARKETING WOULD BE PERFECT FOR YOU.

With volunteer opportunities and work placements, not only will you become book smart, but you will gain hands-on industry experience too.

Alongside your studies, you will gain insights and top tips from inspirational speakers on campus and during insightful and thrilling residential tours, for example the Business Live Conference in Disneyland Paris, and trips to New York, London, or Berlin.

CAREER OPTIONS

- ✓ Business manager
- ✓ Team leader
- ✓ Finance and projects
- ✓ Marketing and social media manager
- ✓ Human resources management
- ✓ Project manager/ coordinator
- ✓ Finance manager/ coordinator

Salary info:

Business project managers earn an average of **£75,000** a year*

*Source: National Careers Service



NAME: Ffion Roberts
STUDIED: Management and Administration T Level
JOB TITLE: Degree Apprentice, Airbus Broughton



The practical approach at Reaseheath gave me a real-world perspective that aligned with my career goals. I loved the engaging discussions we had in class and the course gave me the opportunity to gain valuable work experience through an industry placement that later gave me skills that aligned with my interests.



4

REASONS TO STUDY BUSINESS WITH US

1 INDUSTRY VISITS

Learn more about the industry with study tours to London, Berlin, New York or the Business Live Conference in Disneyland Paris, as well as educational visits to venues such as Chester Zoo, JCB, and the Houses of Parliament.

3 PRACTICAL WORK EXPERIENCE

As part of your T Level studies, you will complete a work placement for a total of 315 hours, which is a great opportunity to gain essential experience and to put what you learn at college into practice. It looks great on your CV too!

2 WORK WITH A VARIETY OF BUSINESSES

Our links with key business professionals, such as John Lewis and AO, means you'll gain real industry insight and be able to benefit from work experience opportunities.

4 HIGHLY EXPERIENCED LECTURERS

Our teaching staff have a wealth of industry knowledge and experience to pass on to you, and are dedicated to ensuring that you become ready for your future career.



Courses AVAILABLE

T Level Marketing

T Level Management & Administration

Level 2 T Level Transition in Management & Administration. You can progress onto either T Level once completing this transition programme

ENVIRONMENTAL Conservation



IF YOU WANT TO HELP PROTECT THE UK'S NATURAL ENVIRONMENT AND YOU'RE KEEN TO WORK OUTDOORS, AN ENVIRONMENTAL CONSERVATION COURSE AT REASEHEATH IS FOR YOU!

Studying amongst hectares of farms, parklands, lake and woodland you will have plenty of opportunities to develop your practical skills on campus, while also carrying out coastal habitat surveys, undertaking woodland management and working with local communities on a host of outreach projects.

You'll also have the chance to go on field trips, complete an industry relevant work placement and gain additional industry qualifications, all of which will give you valuable experience for your CV.



NAME: Rhian Tyne
STUDIED: Level 3 Technical Baccalaureate in Land and Wildlife Management
JOB TITLE: Trainee Wildlife Ranger, Forestry England

“

My job is incredibly diverse and involves a lot of conservation work. My primary role is to help manage fallow and muntjac deer populations but I'm also involved in conserving a huge range of other species such as red kites, dormice and bats. The skills, knowledge and support I'd gained from college helped me to stand out when I applied for my current role.

”

CAREER OPTIONS

- ✓ **Range conservation assistant**
- ✓ **Environmental ecologist**
- ✓ **Forest schools practitioner**
- ✓ **Countryside contractor**
- ✓ **Environmental project manager**
- ✓ **Game keeper**

Experienced ecologists earn an average of **£42,000** a year*

*Source: National Careers Service

4

REASONS TO STUDY ENVIRONMENTAL CONSERVATION WITH US

1 BE SURROUNDED BY NATURE

We are the perfect place to study your Conservation course, as we have a wide range of nature and wildlife for you to explore, right here on campus.

3 HIGHLY EXPERIENCED LECTURERS

Learn from highly experienced lecturers who have lots of industry knowledge to share with you.

2 BECOME CAREER READY

Complete relevant study tours, work placements and extra qualifications alongside your course for additional experience to prepare you for a successful career in the industry.

4 WORK WITH INDUSTRY PROFESSIONALS

Benefit from our strong links with leading organisations such as Groundwork, Natural England, Environment Agency and RSPB.



Courses AVAILABLE



- Level 2** Technical Certificate in Land and Wildlife
- Level 3** Diploma in Land and Wildlife Management

PROGRESS ONTO A DEGREE AT UNIVERSITY CENTRE REASEHEATH

After completing your course, you may decide to develop your skills further and continue your studies with us. Why not find out more about degrees in Environmental Conservation or Wildlife Conservation and Ecology? Visit: ucreaseheath.ac.uk

Construction TRADES

IF YOU'RE INSPIRED BY THE PLACES WHERE WE LIVE, WORK, TRAVEL AND PLAY, THE CONSTRUCTION INDUSTRY IS LOOKING TO RECRUIT YOUNG PEOPLE WITH RECOGNISED TRADE QUALIFICATIONS AND THE SKILLS THAT COUNT.

As a Reaseheath construction student you can build a range of specific skills in one of three distinct trade areas; joinery, plastering or bricklaying.

Our industry-led full-time and apprenticeship courses are the perfect foundation for a rewarding career as you will learn your craft alongside industry professionals. If you want to make a lasting impact by building functional and sustainable environments for an expanding population - your future starts with us!



NAME: Tom Tunnicliffe
STUDIED: Level 3 Joinery Apprenticeship
JOB TITLE: Builder, Persimmon Homes

CAREER OPTIONS

- ✓ Site joiner
- ✓ Bricklayer
- ✓ Plasterer

Experienced bricklayers earn an average of **£40,000** a year*

*Source: National Careers Service

My apprenticeship at Reaseheath gave me the skills, confidence, and real-world experience I needed to succeed in the industry. The support from my tutors and the opportunities I had with Persimmon Homes have been brilliant.

4 REASONS TO STUDY CONSTRUCTION TRADES WITH US

1 GAIN ADDITIONAL QUALIFICATIONS

Have the chance to gain the Construction Skills Certification Scheme, which proves you have the qualifications needed to work on-site. You won't get a job with a recognised company without one!

3 BENEFIT FROM INDUSTRY LINKS

You'll benefit from our links with leading national and international companies and gain valuable insight with on-site visits and trips to building shows such as Eco Build and The Skills Show.

2 OUTSTANDING FACILITIES

You'll become career ready by learning your trade in bespoke, spacious workshops that are stocked with top quality equipment.

4 TEST YOUR SKILLS AT NATIONAL COMPETITIONS

Put your skills to the test in a real-world environment by taking part in national skills competitions for that all important industry experience.



Courses AVAILABLE

Level 1	Diploma in Brickwork
Level 1	Diploma in Joinery
Level 1	Diploma in Plastering
Level 2	Diploma in Brickwork
Level 2	Diploma in Joinery
Level 2	Diploma in Plastering
Level 2/3	Apprenticeships in Construction (brickwork or carpentry and joinery)



Construction

DESIGN, SURVEYING & PLANNING

IF SHAPING THE BUILT ENVIRONMENT EXCITES YOU, WHY NOT CONSIDER A T LEVEL IN DESIGN, SURVEYING AND PLANNING AT REASEHEATH COLLEGE?

In just two years, you'll gain essential skills and hands-on experience in architecture, surveying, and planning, thanks to a course designed with top employers. One week, you might be creating industry-standard sketches, the next, working on a tender, researching a mock court case, or gathering site data. Reaseheath College will equip you with the expertise needed for a successful career in the construction industry.

CAREER OPTIONS

- ✓ Project manager
- ✓ Architect
- ✓ Quantity surveyor
- ✓ Health and safety manager

Experienced quantity surveyors earn an average of **£80,000** a year*

*Source: National Careers Service



NAME: Pippa Jones
STUDIED: T Level in Construction Design, Surveying and Planning
JOB TITLE: Higher Level Apprenticeship

Being at Reaseheath has opened up amazing opportunities for my future career. Working on a real-world accessibility project with Together and Building Heroes gave me valuable industry experience and a deeper understanding of inclusive design. Seeing my winning bungalow design come to life was a proud and unforgettable moment.



4

REASONS TO STUDY
**CONSTRUCTION
DESIGN,
SURVEYING &
PLANNING**
WITH US

1 HIGHLY EXPERIENCED STAFF

You will be well supported by our team of highly qualified staff with extensive industry experience, all dedicated to helping you to achieve your career goals.

2 OUTSTANDING FACILITIES

Perfect your skills in our state-of-the-art Construction Centre and Innovation Hub, with modern workshops, classrooms and specialist equipment.

3 DESIGNED WITH EMPLOYERS

Our T Levels have been designed with employers to teach you core knowledge and skills, for example in research, problem solving, solution-development, communication and collaboration.

4 HIGH-QUALITY EQUIPMENT

Thanks to our partnerships with leading businesses, you will benefit from top-quality materials and resources, and high-tech equipment such as VR headsets, due to our involvement in the Advanced Construction Training project.



Courses

AVAILABLE

Level 2 T Level Transition - Design, Surveying & Planning

T Level Design, Surveying & Planning

Engineering

IF WORKING WITH BIG AND COMPLEX MACHINERY SOUNDS LIKE THE ROUTE FOR YOU, WHY NOT CONSIDER AN ENGINEERING APPRENTICESHIP WITH REASEHEATH COLLEGE?

You will become career ready in no time by accessing high-quality training and learning with state-of-the-art technologically advanced machinery and equipment. Whether it be agricultural, construction plant, bus or rail industries you have an interest in, studying in the Agri-Tech Centre or Reaseheath Engineering Apprenticeship Academy will help you to get off to a flying start.

Reaseheath College works with over 80 companies, such as JCB Dealerships, The Gap Group and Alstom, so it's guaranteed you will be placed in knowledgeable and experienced hands, paving the way for a bright future.

CAREER OPTIONS

- ✓ **Bus and coach specialist**
- ✓ **Auto electrician**
- ✓ **Rail maintenance technician**
- ✓ **Forklift truck technician**
- ✓ **Recycling industry engineer**
- ✓ **Construction plant mechanic**

Experienced construction plant mechanics earn an average of **£35,000** a year*

*Source: National Careers Service



NAME: Daniel McDill
STUDIED: Level 3 Bus and Coach Engineering Technician
NEXT STEP: Coach Builder, First Bus

“

My experience of learning at Reaseheath was a very good one with great support from my tutors, especially my skills coach, and it has given me a good foundation to build my varying skills. One of the biggest highlights of my time at college was gaining life-long friends from all over the country.

”

4

REASONS TO STUDY ENGINEERING WITH US

1 DESIGNED WITH EMPLOYERS

Our apprenticeships have been designed with a wide range of employers to ensure you gain the skills and technical know-how needed by the industry.

3 MODERN TRAINING FACILITIES

Our advanced Engineering and Agri-Tech Centre is a multi-million-pound technical training facility with electronic diagnostic equipment, hydraulic training rigs, electronics lab, and industry-standard workshops.

2 INDUSTRY EXPERIENCE

Our staff have extensive industry experience and collaborate with leading manufacturers, which helps to keep you up to date with the latest advancements in the sector.

4 EARN WHILE YOU LEARN

By completing an engineering apprenticeship, you will gain on-the-job training while earning a wage, to fast-track your career in the construction plant, rail, bus or agricultural engineering industries.



Courses AVAILABLE

Level 3 Apprenticeship in Land-based Engineering

Level 3 Apprenticeship in Bus & Coach Engineering

Level 3 Apprenticeship in Construction Plant

Level 3 Apprenticeship in Rail Engineering

reaseheath.ac.uk/engineering-apprenticeships

Equine



IF YOU'RE PASSIONATE ABOUT HORSES AND WANT TO LEARN ALL ASPECTS OF THE MODERN-DAY EQUESTRIAN INDUSTRY, STUDYING EQUINE WOULD BE A GREAT CHOICE FOR YOU.

The experience you gain at Reaseheath will prepare you well for employment, from working towards extra qualifications including British Horse Society stages, to completing work placements and study tours, and becoming part of our arena party to support world-class events such as the Horse of the Year Show and the British Dressage National Championships. On campus, you can join our weekly riding lessons with our skilled coaches to develop your riding ability, or if you would prefer not to ride, you can concentrate on other modules such as equine business or principles of competition grooming.

As these courses are A Level equivalent, you will have plenty of varied and rewarding career options open to you after you complete your course or you could choose to progress onto degree level study, for example at University Centre Reaseheath, to specialise in your chosen area of the equine sector.

CAREER OPTIONS

- ✓ Nutritionist
- ✓ Elite competition grooming
- ✓ Physiotherapist
- ✓ Professional rider or coach
- ✓ Yard management
- ✓ Media and marketing
- ✓ Product designer and manufacturer

Did you know? Experienced equine nutritionists can earn between **£35,000** and **£50,000** a year*

*Source: prospects.ac.uk



NAME: Samantha Stevens
STUDIED: Horse Management
JOB TITLE: Content Creator, Equerry Consulting

Studying at Reaseheath really gave me confidence in what I was doing, and the access it gave me to industry experts gave me a real overview of the career paths I could take in this industry – it's not only working in stables, there's a huge, world-wide industry out there in equine, and Reaseheath gave me access to that.



4

REASONS TO STUDY
EQUINE
WITH US

1 BHS APPROVED TRAINING AND ASSESSMENT CENTRE

Study at our highly commended BHS approved Training and Assessment Centre with outstanding facilities such as a modern indoor arena, two outdoor arenas, riding simulator, show jumps, horse walker, solarium, equissage massage machine, and much more.

2 LEARN FROM INDUSTRY PROFESSIONALS

Learn from our expert staff, many of whom have elite international experience, as well as world-renowned industry professionals through lectures, demonstrations and industry visits.

3 ENHANCE YOUR CV

Complete work placements and study tours, become part of our arena party to support world-class events, and train for extra qualifications such as British Horse Society exams to enhance your CV.

4 YOU CAN BRING YOUR HORSE WITH YOU!

We have a range of livery packages available, so you and your horse will have access to our excellent range of facilities, on-site competitions and training opportunities with resident coaches and visiting professionals.



Courses

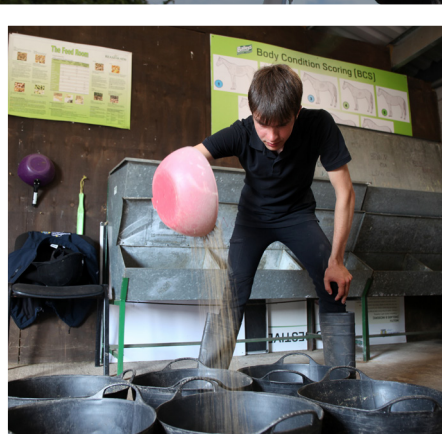
AVAILABLE

Level 2 Apprenticeship in Equine

Level 2 Equine Care

Level 3 Equine Management

Level 3 Technical Baccalaureate in Equine Management



PROGRESS ONTO A DEGREE AT UNIVERSITY CENTRE REASEHEATH

After completing your course, you may decide to develop your skills further and continue your studies with us. Why not find out more about degrees in Bioveterinary Science, Equine Behaviour & Welfare, or Equine Training & Rehabilitation? Visit: ucreaseheath.ac.uk



Floristry

IF YOU LOVE FLOWERS AND PLANTS AND HAVE ARTISTIC AND CREATIVE FLAIR, A FLORISTRY COURSE AT REASEHEATH IS FOR YOU!

You'll learn your floral design skills in our dedicated studios within our award-winning floristry department and be encouraged to develop your creativity by foraging in the grounds of our beautiful campus, home to a range of flowers and foliage. You'll also complete relevant work experience and produce designs for clients under supervision.

You may also work in our local community, preparing displays for hospices, stately homes and flower festivals, or enjoy behind-the-scenes visits to floristry shows and businesses. Additionally, you could compete in national competitions such as WorldSkills UK or be on a medal-winning team at the RHS Flower Show or RHS Chelsea Flower Show.

CAREER OPTIONS

- ✓ Floristry shop owner
- ✓ Wedding and party specialist
- ✓ Floral decorating team member
- ✓ Demonstrator
- ✓ Cruise ship florist
- ✓ Staff florist at prestigious hotel
- ✓ Specialist grower

As a self-employed florist, there is **NO LIMIT** to the amount you can earn!



NAME: Daisy Annandale
STUDIED: Floristry
JOB TITLE: Florist at Flores Diem

“

I enjoyed studying floristry at Reaseheath because everyone is passionate about the same thing and the lecturers help you to be the best you can be. I also loved the campus because it is a very peaceful and safe environment.

”

4

REASONS TO STUDY
**FLORISTRY
 WITH US**

1 HIGHLY ACCLAIMED DEPARTMENT

Learn your floral design skills in our dedicated studios within our award-winning floristry department and be encouraged to develop your creativity by foraging in the grounds of our beautiful campus.

3 GAIN EXTRA PRACTICAL EXPERIENCE

Work in our local community, preparing displays for hospices, stately homes and flower festivals, or enjoy behind-the-scenes visits to floristry shows and businesses.

2 COMPLETE WORK EXPERIENCE

Complete relevant work experience as well as practice producing designs for clients under supervision at college.

4 TEST YOUR SKILLS AT NATIONAL COMPETITIONS

Have the chance to compete in national competitions such as WorldSkills UK or be on a medal winning team at the RHS Flower Show Tatton Park or RHS Chelsea Flower Show.



Courses AVAILABLE

Level 2 Floristry

Level 3 Floristry



Food TECHNOLOGY

DO YOU ASPIRE TO BE PART OF THE UK'S LARGEST MANUFACTURING INDUSTRY? WELL, LOOK NO FURTHER. OUR FOOD SCIENCE & TECHNOLOGY COURSES WILL EQUIP YOU WITH THE SKILLS AND KNOWLEDGE YOU NEED.

Our commercial Food Centre is BRC Grade AA+ accredited so your training will be of the highest quality. Studying Food Science and Technology, you will be a part of a dynamic and thriving sector, and you will gain an understanding of the ever-changing consumer needs, nutrition and even global challenges.

On top of practical lessons, you will join study tours, get involved in a variety of projects and go behind-the-scenes at several companies, as well as experience working with one of our partners for example Sainsbury's, Premier Foods, Co-op, and Heineken.

CAREER OPTIONS

- ✓ Lab technician
- ✓ Production operative
- ✓ Food logistics
- ✓ Food nutritionist
- ✓ Ingredient and packaging buyer
- ✓ Environmental health officer

Experienced food scientists earn an average of **£45,000** a year*

*Source: National Careers Service



NAME: Hannah Johnson
STUDIED: Artisan Food Production
JOB TITLE: Production Manager, Dalton's Dairy

“

The highlight of my studies was becoming confident using the industry standard equipment in Reaseheath's Food Centre. The processing halls are run as a small-scale factory and give you experiences which you wouldn't get elsewhere. The skills and extra industry certificates I gained prepared me well for my degree and I was offered my job as soon as I graduated.

”

4 REASONS TO STUDY FOOD TECHNOLOGY WITH US

1 OUTSTANDING FACILITIES

Learn in our industry standard commercial Food Centre, which holds the globally recognised British Retail Consortium Grade AA+ certification for food safety.

2 GAIN EXTRA FOOD QUALIFICATIONS

Gain extra qualifications in key subjects such as health and safety, food safety, risk assessment and HACCP to make you and your CV stand out.

3 WORK WITH INDUSTRY PROFESSIONALS

Complete your industry placement with one of our regional and national industry partners, which include Premier Foods, Sainsbury's, Bakkavar, Bright Blue Foods, Robinsons, Co-op and Heineken.

4 BECOME CAREER READY

Enhance your skills with trips across the UK and study tours to breweries, bakeries and food manufacturers, where you'll learn from world class experts in the field.



Courses AVAILABLE

Level 1 Food Industry Skills

Level 2 T Level Transition - Food Science

T Level Food Science

Level 2 Apprenticeship Craft Butchery

Level 3 Apprenticeship Craft Butchery

Level 2 Apprenticeship Food & Drink Operator

Level 3 Apprenticeship Food & Drink Operator

Forestry & ARBORICULTURE

ARE YOU ENTHUSIASTIC ABOUT THE ENVIRONMENT? IF SO, OUR T LEVEL IN TREE & WOODLAND MANAGEMENT & MAINTENANCE IS FOR YOU.

Are you interested in the professional management of trees and woodland? This is a vital role for the sustainable development of our countryside, urban spaces, and for conservation.

No two days at college are ever the same and you'll spend at least half of your study time hands-on taking part in practical activities.

From tree climbing and learning best practice for tree care on campus to supporting the local community with real life arboriculture projects, you'll gain a wide range of work experiences, perfect to enhance your CV! Plus, as part of your T Level studies, you will complete an industry work placement for a total of 315 hours.

CAREER OPTIONS

- ✓ Arboriculturist
- ✓ Tree officer
- ✓ Forestry worker
- ✓ Country estate worker
- ✓ Woodland manager
- ✓ Countryside/ conservation contractor

Experienced arboricultural officers earn an average of **£40,000** a year*

*Source: National Careers Service



NAME: Ed Mulroy
STUDIED: Forestry and Arboriculture T Level
JOB TITLE: Second Tree Climber, Beechwood Tree Surgeon

The content is varied and interesting. The instructors are very knowledgeable and have worked in the industry themselves, so they have extensive knowledge and experience. The course also leads into a wide range of jobs within the industry.

4

REASONS TO STUDY

FORESTRY & ARBORICULTURE WITH US

1 HELP PROTECT THE ENVIRONMENT

Learn to protect the environment and gain skills which are crucial for the sustainable development of the countryside and urban spaces.

3 WORK WITH INDUSTRY PROFESSIONALS

Benefit from our great industry links with companies such as Stein, Forestry England or Sorbus International.

2 LEARN THROUGH PRACTICAL EXPERIENCE

Spend time climbing trees, learning about tree care, management systems of timber and much more, both on campus and within the local community.

4 GAIN EXTRA QUALIFICATIONS

Gain professional certificates alongside your qualification to help you and your CV stand out.



PROGRESS ONTO A DEGREE AT UNIVERSITY CENTRE REASEHEATH

After completing your course, you may decide to develop your skills further and continue your studies with us. Why not find out more about degrees in Environmental Conservation or Wildlife Conservation and Ecology? Visit: ucreaseheath.ac.uk

Foundation LEARNING

IF YOU WANT TO DEVELOP YOUR PERSONAL SKILLS, BUILD YOUR CONFIDENCE AND GAIN ESSENTIAL SKILLS FOR LIFE AND WORK, WHY NOT CONSIDER ONE OF OUR COURSE PATHWAYS IN FOUNDATION LEARNING AT REASEHEATH COLLEGE?

All three of the pathways we offer help you to develop vital personal, learning and employability skills to prepare you for adulthood and the world of work.

Whether you choose the Skills for Working Life, Introduction to Land-Based Studies, or the Employability pathway, you will be supported by highly dedicated staff ready to help you develop your independence and communication skills, gain real-world practical experience, explore potential career paths, and so much more, ensuring you reach your full potential at Reaseheath College.



NAME: David Smith

STUDIED: Level 1 Career Development Pathway

NEXT STEP: Open University business and computing course

“

My Level 1 course prepared me well for the move up to the Level 3 Business Diploma. I enjoy computing and I was supported to gain more skills. I was also involved in group activities and discussions which helped me grow in confidence and independence.

”

CAREER OPTIONS

After completing a foundation course at Reaseheath College, over 90% of students go on to further learning or employment. You will undertake around 60 to 100 hours of relevant work placements; this may depend on the employer you work for and your course of study. Upon completion, you will have developed skills for your CV and feel more confident in your ability.

4

REASONS TO STUDY
**FOUNDATION
LEARNING
WITH US**

1 RECEIVE EXCELLENT SUPPORT

Our friendly and highly qualified staff will support you throughout your studies, making sure you get everything you can out of your time at Reaseheath College.

2 CHOOSE THE PATH FOR YOU

We offer three different pathways in our Foundation department at Reaseheath College; Skills for Working Life, Introduction to Land-Based Studies, and the Employability pathway. You can choose the path that's right for you depending on the skills you want to develop.

3 BOOST YOUR CONFIDENCE

Increase your confidence by completing a work placement, organising community fundraising events, and enjoying practical activities on campus.

4 DEVELOP YOUR PERSONAL SKILLS

Reach your full potential, develop your personal skills and gain a better understanding of the career path you would like to pursue.



Courses AVAILABLE

Skills for Working Life

Entry 2 and Entry 3 Skills for Working Life

Introduction to Land-Based Studies

Entry 3 Land-based Studies

Level 1 Agriculture

Level 1 Animal Care

Level 1 Equine Skills

Employability

Pathway to Work

Supported Internship

Horticulture & LANDSCAPE

DO YOU ENJOY KEEPING YOUR GREENERY LOOKING GREAT? TURN YOUR ENTHUSIASM INTO A CAREER BY STUDYING A HORTICULTURE & LANDSCAPE COURSE AT REASEHEATH COLLEGE.

This is a hands-on course about the 'green industry', where you will undertake relevant training and complete work experience with our specialist partners to help grow your career. You will be studying in our cutting-edge facilities, including one of the largest training and research centres for vertical farming.

Benefit from partnerships with professional organisations and suppliers including the Royal Horticultural Society and the Landscape Institute. You may also get involved with designing and building gardens and community garden projects, and even win medals for your hard work.

CAREER OPTIONS

- ✓ **Botanist**
- ✓ **Garden designer**
- ✓ **Landscape architect**
- ✓ **Park supervisor**
- ✓ **Nursery production technician**

Experienced landscape architects earn an average of **£45,000** a year*

*Source: National Careers Service



NAME: Jamie Butterworth
STUDIED: Horticulture
JOB TITLE: RHS Ambassador and Managing Director of Form Plants

Horticulture is one of the most fun, exciting, rewarding, and diverse industries I can think of. For me, it's important that we inspire more young people to get into horticulture as a career – and colleges like Reaseheath provide an ideal grounding.

”

4

REASONS TO STUDY
**HORTICULTURE
& LANDSCAPE
WITH US**

1 PREPARE FOR AN EXCITING CAREER

Our highly experienced lecturers will help you to prepare for a rewarding and exciting career in the horticultural industry.

3 STUDY ON A BEAUTIFUL CAMPUS

Our formal gardens and grounds is the perfect learning environment for horticulture students, with specialist plant collections, unusual trees, designed landscapes and sports pitches.

2 STUDY IN HIGH-TECH FACILITIES

Study in our recently built vertical farming facility, which consists of three floor to ceiling growing chambers, and has a separate research growing room which allows for micro scale testing and trials.

4 GAIN EXTRA EXPERIENCE

You will have the chance to enjoy visits to gardens with nationally significant landscaping and planting schemes, and also have the opportunity to get involved in industry-led projects on and off campus.



Courses

AVAILABLE

Level 2 Horticulture

Level 2 Apprenticeship in Horticulture

Level 3 Apprenticeship in Crop Production

T Level Horticulture & Landscaping



**PROGRESS
ONTO A
DEGREE AT
UNIVERSITY
CENTRE
REASEHEATH**

After completing your course, you may decide to develop your skills further and continue your studies with us. Why not find out more about degrees in Landscape Architecture? Visit: ucreaseheath.ac.uk

Motor Vehicle



DOES THE THOUGHT OF STUDYING VEHICLES FUEL YOU? JUMP-START YOUR CAREER WITH REASEHEATH'S INDUSTRY FOCUSED MOTOR VEHICLE COURSE.

Gain the practical skills and knowledge needed to become ready for an exciting and rewarding career in the motor vehicle industry, as you learn all about advanced diagnostic systems, fault finding and carrying out repairs.

You will receive hands-on experience in our purpose-built Engineering Centre with industry standard workshops, a stunning exhibition-style showroom, an electronics lab, and the latest equipment. On top of this, we have strong links with a range of reputable companies, including Acorn Motor Group, Smiths Autoparts and SYNETIQ. As well as hands-on experience, you will also be given the opportunity to visit track days, transport museums, motor shows and more.

CAREER OPTIONS

- ✓ Vehicle technician
- ✓ Working within main vehicle dealerships
- ✓ Master technician
- ✓ Motorsport engineer

Experienced motor mechanics earn an average of **£35,000** a year*

*Source: National Careers Service



NAME: Will Redford
STUDIED: Light Vehicle Maintenance and Repair Principles
JOB TITLE: Professional Racing Driver

“

I got to know Reaseheath well in the two years I attended as a Year 10/11 pupil and I really enjoyed becoming a full-time student. The facilities are great. There's a wide range of modern vehicles, the tools and equipment are state-of-the-art and the lecturers are friendly and supportive.

”

4

REASONS TO STUDY
MOTOR VEHICLE
WITH US

1 INDUSTRY EXPERIENCE

Complete 100 hours of industry relevant work placements, for hands-on experience within a motor vehicle environment.

3 EXCELLENT FACILITIES

Our multi-million-pound purpose-built workshop facilities have five bays, 11 vehicle ramps, a simulated MOT standard test lane.

2 GAIN ADDITIONAL QUALIFICATIONS

Work towards gaining additional training qualifications in hybrid technology to enhance your employability and personal development.

4 AMAZING STUDY TOURS

Have the chance to take part in study tours and visit track days, transport museums, motor shows and more, to complement what you learn at college.



Courses AVAILABLE

- Level 1** Automotive Maintenance
- Level 2** Vehicle Inspection
- Level 3** Maintenance & Repair



Personal TRAINING

ARE YOU A FITNESS FANATIC WHO WOULD LOVE TO HELP OTHERS REACH THEIR HEALTH AND FITNESS GOALS? PUSH YOUR ENERGY INTO ONE OF OUR COURSES AT REASEHEATH COLLEGE.

Whether you aspire to become a personal trainer or work in another fitness-related profession, this course will put you on the right track. You can work towards your career in our fantastic facilities with a fitness studio, gym, and sports performance lab.

Grow your mind, muscles and career by keeping up to date with the latest fitness trends and techniques with practical sessions on and off campus. You will also gain relevant industry experience by completing placements at local fitness and leisure centres.



NAME: Skye Tyler-Smith

STUDIED: Sport

JOB TITLE: Fitness Instructor, Personal Trainer, Gym Manager at Aptitude Health and Fitness

“

The skills I learned at Reaseheath, and particularly the support from my lecturers, helped me realise my dream of becoming a fully qualified fitness instructor and personal trainer. My time as a Reaseheath student gave me the room to grow and develop. I learned about so many aspects of the personal training industry.

”

CAREER OPTIONS

- ✓ Fitness instructor
- ✓ Sports massage therapist
- ✓ Teaching
- ✓ Sports fitness coach
- ✓ Leisure centre manager

Experienced leisure centre managers earn an average of **£37,000** a year*

*Source: National Careers Service

4

REASONS TO STUDY
**PERSONAL
TRAINING
WITH US**

1 PUT YOUR SKILLS TO THE TEST

Put your competitive streak to the test by taking part in the WorldSkills UK personal training competition, going head-to-head with other students from across the country to challenge your fitness level and ability.

2 DEVELOP PRACTICAL SKILLS

Gain relevant experience by working with clients from across the college, including our sports academy, public services students, and with members of the public.

3 MODERN GYM AND FITNESS STUDIO

Access our excellent facilities in our modern fitness studio, which has first-class equipment including weightlifting platform, kettlebells, step boxes, modifiable barbells, and much more.

4 GAIN INDUSTRY EXPERIENCE

Develop your industry experience and practical skills with weekly, relevant work placements in local leisure and fitness centres to make you and your CV stand out.



Courses **AVAILABLE**

Level 3 Physical Activity, Fitness and Exercise Science



Public SERVICES

ARE YOU INTERESTED IN A DISCIPLINED CAREER SERVING THE PUBLIC AT HOME OR OVERSEAS WITH ONE OF OUR EMERGENCY OR PROTECTIVE SERVICES?

Our industry focused courses will ensure you take a step in the right direction to pursuing a career you love, while you prepare for a range of challenging and rewarding situations that will in turn hugely impact the lives of others and the community.

You will be taught by industry experts with life experience in the services as well as getting valuable input from a range of serving members of protective services such as police firearms teams, paramedics and mountain rescue. You could also have the opportunity to volunteer for service visits to support service personnel in their training.



NAME: Freya Markham

STUDIED: Uniformed Public Services

NEXT STEP: Special Constable, Cheshire Constabulary

“

I loved my time at Reaseheath and would go back and do it all again. Although it was challenging at times, I'm so glad I chose to study Uniformed Public Services there. Every day was different, and I learnt so much. You really do get out of it what you put in. I had the best teachers – so encouraging and supportive. You could tell they really cared and wanted the best for you.

”

CAREER OPTIONS

- ✓ **Criminologist**
- ✓ **UK Border Force**
- ✓ **Fire and rescue**
- ✓ **Forensic science**
- ✓ **Prison service**

Experienced police officers earn an average of **£41,130** a year*

*Source: National Careers Service

4

REASONS TO STUDY
PUBLIC SERVICES
WITH US

1 INDUSTRY INSIGHT

Gain invaluable advice from industry professionals such as police dog handlers, prison officers and customs personnel.

3 VOLUNTEER FOR CHARITIES

Volunteer and be actively involved in fundraising for local charities, including The Royal British Legion, SSAFA and PTSD charities, to name just a few.

2 BECOME CAREER READY

Enjoy adventurous training activities such as bushcraft, land navigation, and rock climbing, and receive tailor-made fitness training in our on-site gym to prepare for entry into the uniformed services.

4 GAIN ADDITIONAL QUALIFICATIONS

Gain additional qualifications such as Duke of Edinburgh Awards, First Aid qualifications and sports awards, making you highly employable after completing your course.



Courses AVAILABLE

Level 1 Vocational Studies – Sport & Public Services

Level 2 Public Services

Level 3 Uniformed Protective Services

Sport

**ARE YOU A SPORTS FANATIC?
MAKE IT YOUR GOAL TO SCORE
A CAREER IN THE SPORTS
INDUSTRY BY STUDYING AT
REASEHEATH COLLEGE.**

Sport is a massive part of many peoples' lives, whether that's through watching it, playing it or developing performance, it is a huge and growing sector with a vast number of opportunities. By studying with us you will gain the qualifications needed to take your next steps, while developing transferable skills and enhancing your sporting knowledge, coaching skills, analytical skills and practical ability.

Whether you want to specialise in Sport Science and take advantage of our state-of-the-art sports performance centre with over £40,000 worth of high-specification equipment, or you want to focus on Sport Coaching, where you can use our high-tech sport analysis equipment to look at techniques, tactics, and strategies, you'll study the advances in sport and technology which make this industry so fast-paced.

CAREER OPTIONS

- ✓ **Sports nutritionist**
- ✓ **Sports coach**
- ✓ **Sports scientist**
- ✓ **Referee**
- ✓ **PE teacher**
- ✓ **Strength and conditioning coach**

Experienced performance sports scientists earn an average of **£50,000** a year*

*Source: National Careers Service



NAME: Lucy Bates
STUDIED: Sports Coaching & Development
JOB TITLE: Swimming Teacher

“

Reaseheath College helped me grow in confidence and discover my passion for teaching. After achieving two Distinctions in Sports Coaching and Development, I am now working as a swimming teacher in schools and leisure centres, thanks to the skills and knowledge I gained at Reaseheath which I needed to succeed in my chosen career. My favourite thing about my course was the lecturers, they were all so supportive and kind.

”

4

REASONS TO STUDY
**SPORT
WITH US**

1 GAIN ADDITIONAL QUALIFICATIONS

Enhance your CV by studying additional qualifications such as an FA Level 1 in Coaching Football Award or other National Governing Body Awards.

2 OUTSTANDING FACILITIES

Learn using our 3G international rugby floodlit pitch, all-weather multi-use games area and four-court sports hall, as well as high-tech sports analysis equipment and software in our Sports Performance Centre.

3 JOIN OUR FOOTBALL ACADEMY

Have the chance to join our Football Academy, in association with NARS Football, for a unique opportunity to play regularly alongside your Level 2 or Level 3 Sport course.

4 LEARN FROM INDUSTRY PROFESSIONALS

Our dedicated staff are actively involved in the industry, with specialisms including sports therapy, coaching, and strength and conditioning.



Courses AVAILABLE

Level 1 Vocational Studies - Sport & Public Services

Level 2 Sport

Level 3 Sports Coaching & Development

Level 3 Sport & Exercise Science

Veterinary NURSING

IF YOU LOVE ANIMALS AND ARE PASSIONATE ABOUT IMPROVING THEIR HEALTH AND WELFARE, STUDYING VETERINARY NURSING COULD BE THE PERFECT CHOICE FOR YOU.

Our Veterinary Nursing apprenticeships are designed to prepare you for a rewarding career in the industry. As a highly-skilled professional, you'll work alongside veterinary surgeons to deliver medical care to animals. You'll be involved in the care of a wide range of patients, and help to inform and support their owners. It's a profession that is practical, challenging, and hugely rewarding.

CAREER OPTIONS

- ✓ Veterinary nurse
- ✓ Nursing assistant
- ✓ Animal behaviourist
- ✓ Animal rehabilitator
- ✓ Veterinary receptionist
- ✓ Teacher
- ✓ Clinical supervisor
- ✓ Practice manager

Experienced veterinary nurses earn an average of **£29,000** a year*

*Source: www.indeed.com



NAME: Chloe Westlake-Guy

STUDIED: Veterinary Nurse Apprenticeship

JOB TITLE: Registered Veterinary Nurse

I thoroughly enjoyed studying at Reaseheath. The college has a brilliant Veterinary Nursing department, and my courses enabled me to learn theory alongside practical experience. The teaching team was really supportive, and it felt amazing when I passed my final OSCE exams!

”

4

REASONS TO STUDY VETERINARY NURSING WITH US

1 BRAND-NEW FACILITIES

Study in our new Veterinary Nursing Centre with a purpose-built OSCE examination room, laboratory, diagnostic imaging suite, and two clinical skills suites, as well as a dedicated veterinary nursing classroom.

2 HIGHLY EXPERIENCED LECTURERS

Learn from experienced lecturers who have backgrounds in veterinary medicine and science, and who are passionate about teaching you the skills you need to become a veterinary nurse.

3 PRACTICAL WORK EXPERIENCE

Alongside your course, work at a Royal College of Veterinary Surgeons approved practice, where you will have a dedicated clinical supervisor, and will be visited regularly by our veterinary nursing training practice liaison assessor and skills coach.

4 WIDE VARIETY OF ANIMALS ON CAMPUS

Have access to our Animal Management Centre with on-site mini zoo, home to over 1,000 animals including, mammals, birds of prey, reptiles, amphibians and fish.



Courses AVAILABLE

Level 3 Veterinary Nursing Apprenticeship (Companion Animal)

UCR



Progress onto a degree at University Centre Reaseheath

After studying a Level 3 Diploma or T Level with us, you may decide to stay on campus and progress onto degree level study at University Centre Reaseheath.

At University Centre Reaseheath, you will be encouraged to expand on the skills you learn at college, and you will be supported to grow, progress and achieve more than you ever thought possible.








Access to Higher Education Diplomas

If your sights are set on studying a degree, but you need further qualifications first, one of our Access to Higher Education Diplomas is your launchpad for higher level study!

Whether you want to study a degree to secure graduate-level employment, to pursue your passion for the land-based sector, or to develop your academic skills and knowledge, we are here to help at UCR.

Explore our courses at ucreaseheath.ac.uk/access-to-higher-education

There is a wide variety of courses to choose from at University Centre Reaseheath, including full-time and part-time options, as well as Bachelor's and Foundation degrees, so you are sure to find the course that's right for you in one of the following areas:

-  **Animal Science**
-  **Equine Science**
-  **Canine Behaviour and Training**
-  **Sustainable Agriculture**
-  **Landscape Architecture**
-  **Food Science**
-  **Wildlife Conservation**
-  **Veterinary Nursing**

Real-World Learning at University Centre Reaseheath

Progressing to University Centre Reaseheath means more than just continuing your studies – it's your chance to deepen your knowledge, boost your employability, and gain real-world experience in the field you love.

Our higher education students take part in exciting study tours, fieldwork, and employer-led projects that prepare them for the realities of industry. From wildlife conservation at Wynbury Moss to analysing biodiversity on Anglesey's rocky shores, students in Animal and Conservation courses put classroom theory into practice in unique environments.

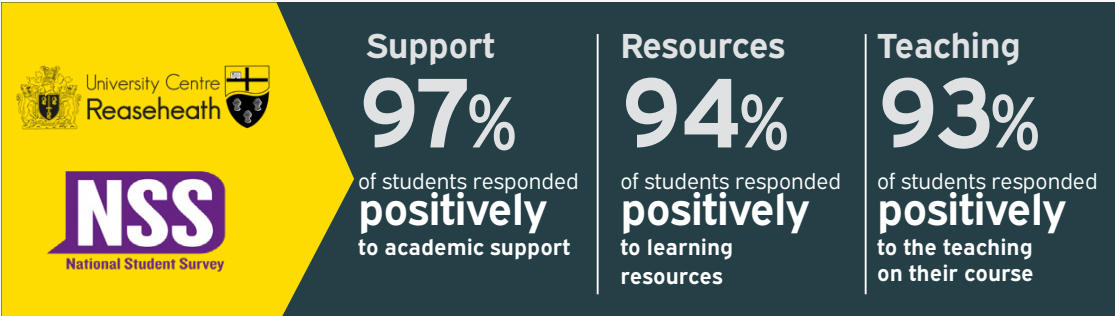
Trips to Manchester Museum, Pembrokeshire, and progressive UK farms add further depth to learning across subjects including Animal Science, Equine Science, Agriculture, and Veterinary Physiotherapy.

Back on campus, students engage with employers through guest lectures, specialist sessions and live briefs – such as dog handling with Cheshire Police or digital marketing with Hillsgreen.

University life at Reaseheath also opens the door to international experiences. Animal Science students recently visited the Ol Pejeta Conservancy in Kenya, while Canine and Veterinary Nursing students supported rescue dogs in Cyprus with Underdog International.

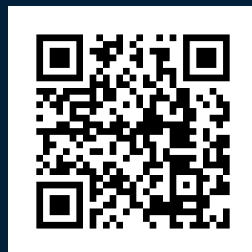
Whether it's working with semi-feral ponies in Wales or restoring castle landscapes, University Centre Reaseheath students are immersed in opportunities that help them stand out – and succeed.

Take your next step with confidence – your real-world career journey continues at University Centre Reaseheath.





INDUSTRY FOCUSED, CAREER READY



SCAN THE QR CODE AND APPLY TODAY

Reaseheath College, Nantwich, Cheshire, CW5 6DF | 01270 613242
enquiries@reaseheath.ac.uk | reaseheath.ac.uk